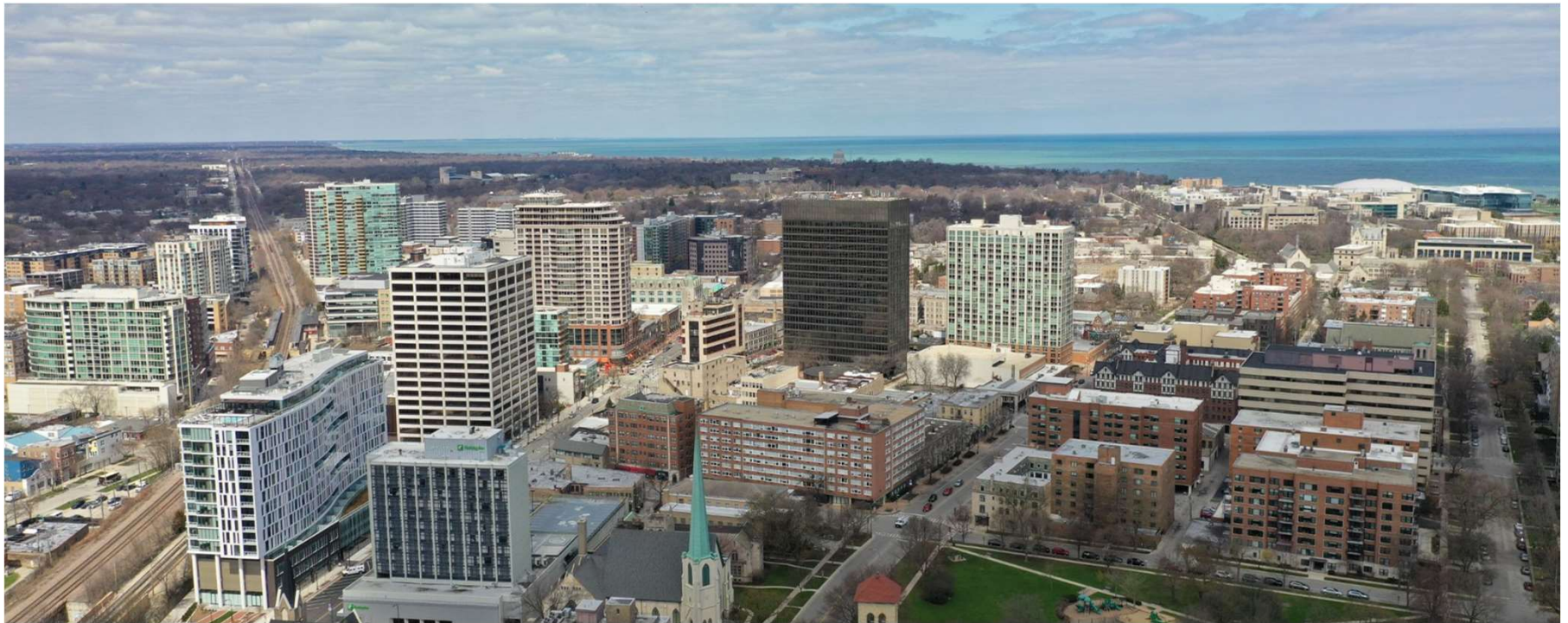


Pickleball Court Costs

Finance and Budget Committee



Lara N. Biggs, P.E.
City Engineer

June 17, 2024

Background Information

2024 Capital Improvement Program included \$350,000 for James Park Pickleball Courts with the following scope:

- Four pickleball courts
- Located between West Parking Lot and the Sled Hill
- Cost based on standard square foot design

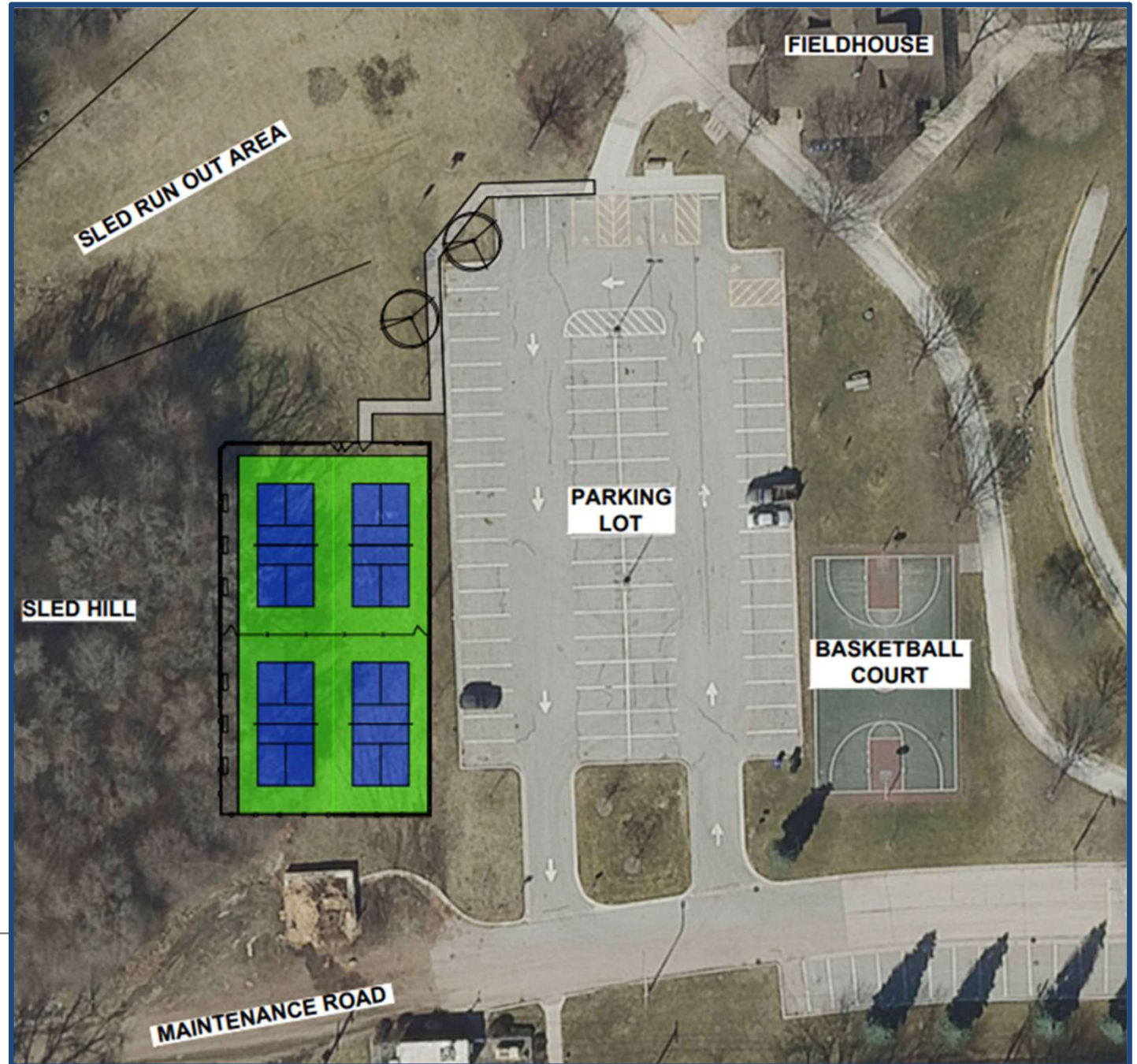
Challenges

- Significant slope to ground
 - Significant regrading
 - Two retaining walls
- Poor quality soils
 - Need to dispose of soils as non-hazardous special waste
 - Ground needs to be stabilized

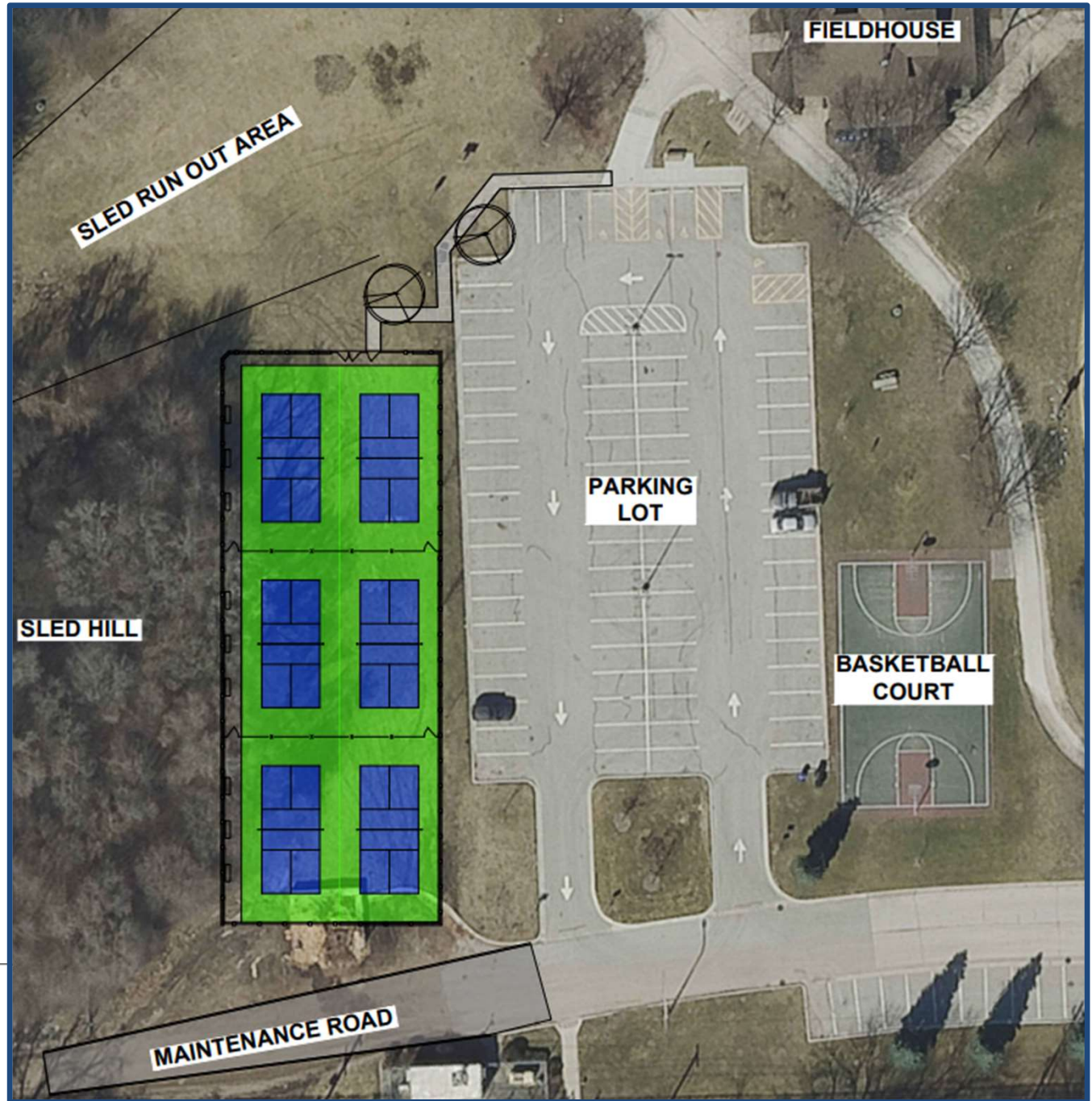
Additional Complication:

- Desire for 6 courts, not 4 courts

Four Court Solution



Six Court Solution



Cost Comparison

Option	Estimated Cost	Cost Due to Slope/Soils
<i>Budget Cost</i>	<i>\$350,000</i>	
Four Court Installation	\$560,000	\$200k - \$250k
Six Court Installation	\$900,000	\$400k - \$500k

Feedback from Finance and Budget

Which project to move forward with?

- None
- Four Courts
- **Six Courts (Parks and Recreation Board Recommendation)**

Potential Projects For Deferral:

- Cartright Park - \$150,000
- Fitzsimmons Park - \$100,000
- Grey Park Dog Park - \$280,000
- Playground Equipment - \$600,000