



Independence and Larimer Park Renovations

Bid # 24-06

ADDENDUM No. 1

March 6, 2024

Any and all changes to the Contract Document are valid only if they are included by written addendum to all potential respondents, which will be mailed, emailed and/or faxed prior to the bid due date to all who are known to have received a complete bid document. Each respondent must acknowledge receipt of any addenda by indicating on the Bid Form. Each respondent, by acknowledging receipt of any addenda, is responsible for the contents of the addenda and any changes to the bid proposal therein. Failure to acknowledge receipt of any addenda may cause the bid to be rejected. If any language or figures contained in this addendum are in conflict with the original document, this addendum shall prevail.

This addendum consists of the following:

1. Addendum Number One (1) is attached and consists of a total of seven (7) pages including this cover sheet. Any changes to the drawings or specifications noted within Addendum Number One (1) will be reflected in subsequent drawing issues.

Please feel free to call (847-866-2910) or email (lithomas@cityofevanston.org) with any questions or comments.

Sincerely,

Linda Thomas
Purchasing Specialist

Independence and Larimer Park Renovations

Bid # 24-06

ADDENDUM No. 1

March 6, 2024

This addendum forms a part of the Specifications and Bid Documents for Bid #24-06 and modifies these documents. This addendum consists of the following:

Drawings:

Sheet C203: Grading Plan

- Grades have been revised at the northwest cul-de-sac ada ramp

Sheet C204, Detail 1: Grading Plan ADA Details

- Grades have been revised at the northwest cul-de-sac ada ramp

Sheet L301, Detail 1: Tree Grate at Plaza

- Depth of tree rootball has been revised
- Tree upright footing has been revised

Sheet L301, Detail 2: Tree Grate – At Existing Curb

- Depth of tree rootball has been revised

Sheet L304, Detail 5: Backstop – Side Elevation

- Overall height of backstop has been revised
- Quantity and spacing of horizontal rails has been revised

Sheet L304, Detail 6: Backstop – Back Elevation

- Overall height of backstop has been revised
- Quantity and spacing of horizontal rails has been revised
- One vertical post has been added

Sheet L310, Detail 4: Tree Planting in Tree Grate

- Depth of tree rootball has been revised

Note: Acknowledgment of this Addendum is required in the Bid.

ISSUE FOR BID

NOT FOR
CONSTRUCTION

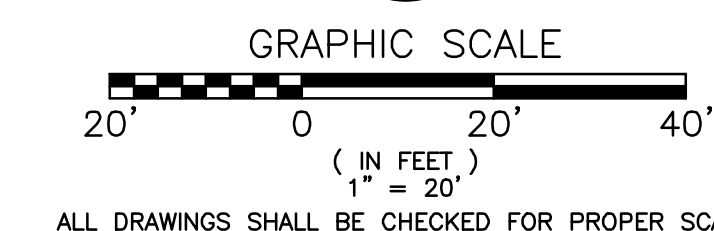
revision	date	issued
△ 1	09.15.2023	30% CONSTRUCTION DOCUMENTS
△ 2	11.03.2023	70% CONSTRUCTION DOCUMENTS
△ 3	12.22.2023	100% CONSTRUCTION DOCUMENTS
△ 4	02.15.2024	ISSUE FOR BID
△ A1	03.06.2024	ADDENDUM 1
△		
△		
△		

LEGEND: GRADING

- x 15.30 SPOT ELEVATION
- 15.30(T)
15.30(B) TOP/BOTTOM ELEVATION
- x.XX% SLOPE DIRECTION
- x (15.30) EXISTING/INTERPOLATED SPOT ELEVATION
- ~ FLOW DIRECTION
- 15--- CONTOUR
- GRADING LIMITS
- NYLOPLAST OPEN BOTTOM DRAIN BASIN
- NYLOPLAST DRAIN BASIN
- ← 100 YEAR OVERFLOW

NOTES:

- GRADES IN MAINTENANCE AREAS WILL REMAIN AS EXISTING WITH NO CHANGE TO THE SUBGRADE ELEVATION.
- SIDEWALK CROSS SLOPES SHALL NOT EXCEED 1.5%.



LARIMER PARK



ISSUE FOR BID

NOT FOR
CONSTRUCTION

revision	date	issued
1	09.15.2023	30% CONSTRUCTION DOCUMENTS
2	11.03.2023	70% CONSTRUCTION DOCUMENTS
3	12.22.2023	100% CONSTRUCTION DOCUMENTS
4	02.15.2024	ISSUE FOR BID
A1	03.06.2024	ADDENDUM 1

seal

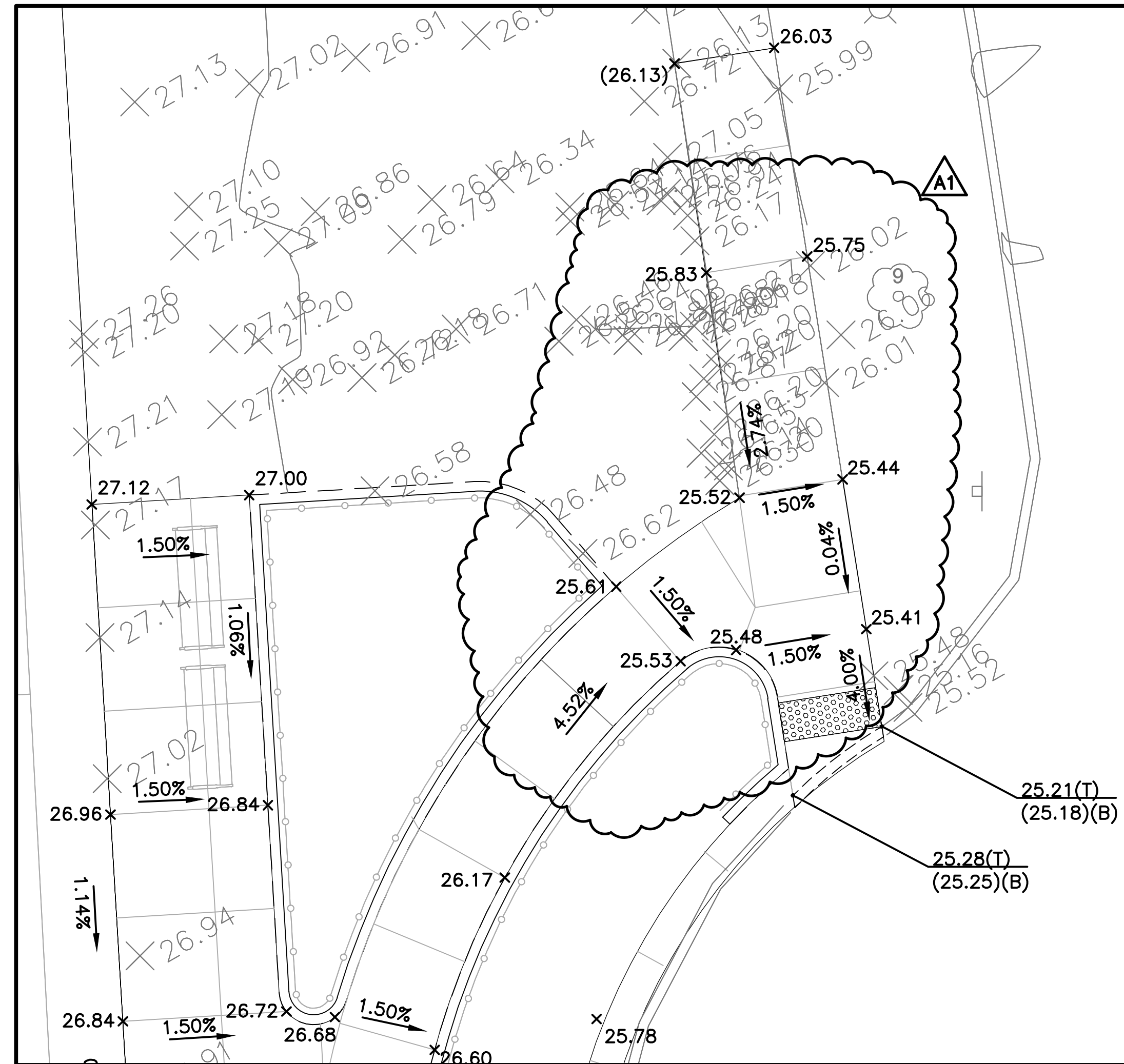
issue date
02.15.2024

project number
n22229

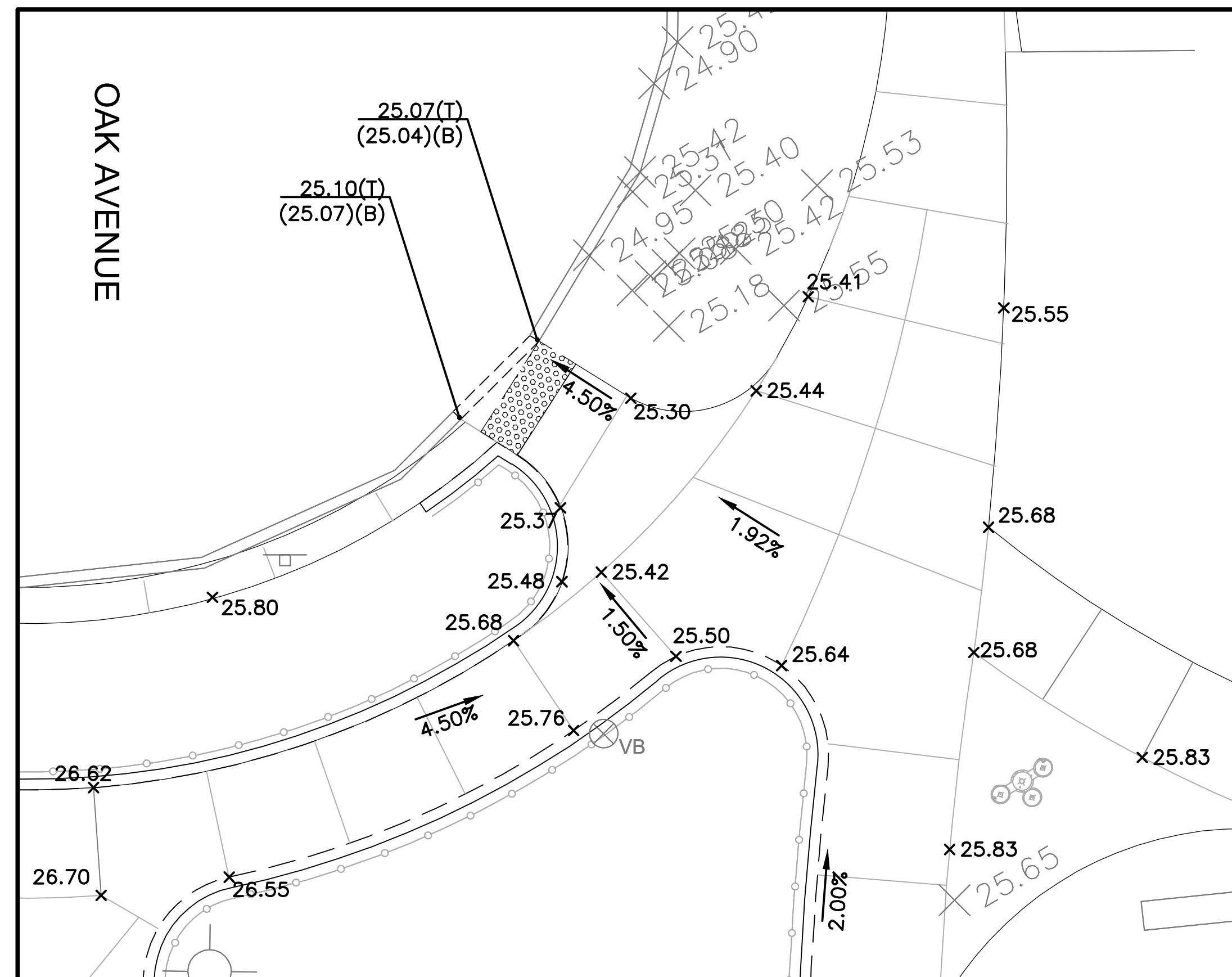
sheet name
**GRADING PLAN
ADA DETAILS**

sheet number

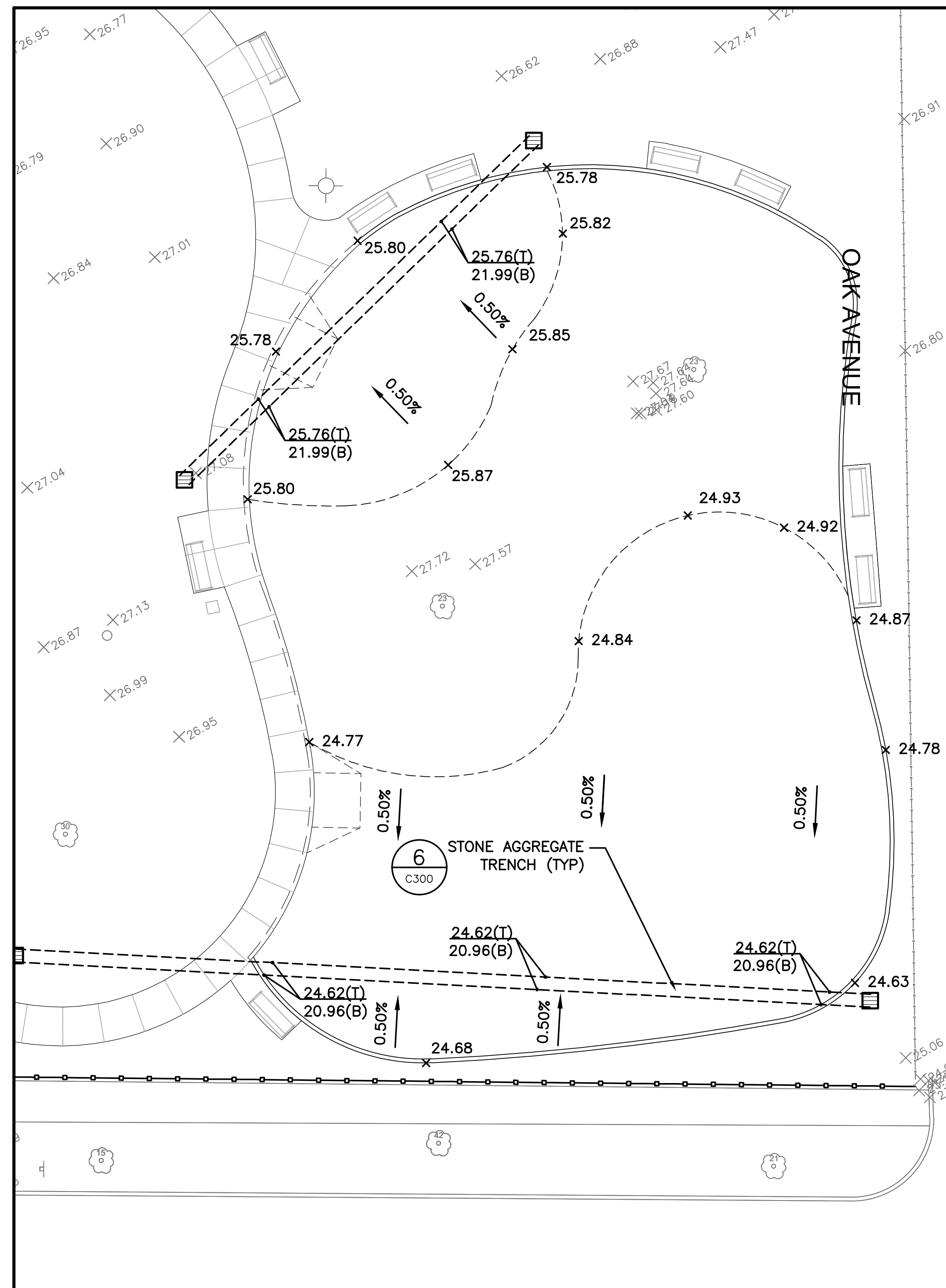
C204



1 NORTHWEST CUL-DE-SAC ADA RAMP
C204 SCALE: 1"=5'



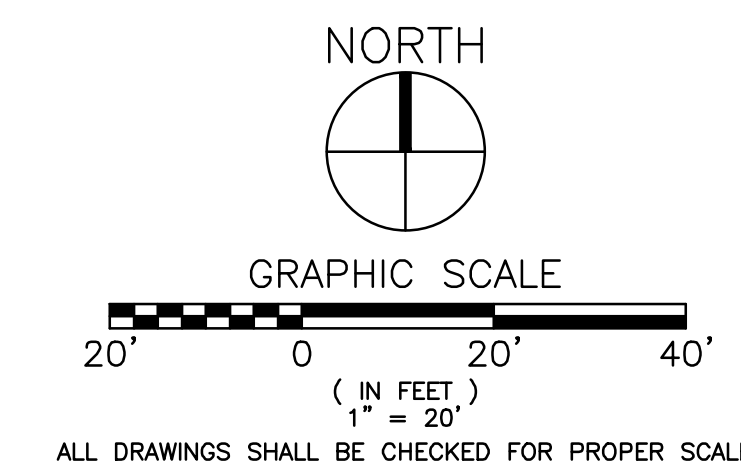
2 SOUTHEAST CUL-DE-SAC ADA RAMP
C204 SCALE: 1"=5'



3 EXCAVATION PLAN
C204 SCALE: 1"=10'

LEGEND: GRADING / EXCAVATION

- x 15.30 SPOT ELEVATION
- 15.30(T)
15.30(B) TOP/BOTTOM ELEVATION
- x.XX% SLOPE DIRECTION
- x (15.30) EXISTING/INTERPOLATED SPOT ELEVATION
- TRENCH
- CATCH BASIN
- NYLOPLAST DRAIN BASIN
- ⊙ CLEANOUT



LARIMER PARK

ISSUED FOR
BID

NOT FOR
CONSTRUCTION

revision	date	issued
△1	09.15.2023	30% CONSTRUCTION DOCUMENTS
△2	11.03.2023	70% CONSTRUCTION DOCUMENTS
△3	12.22.2023	100% CONSTRUCTION DOCUMENTS
△4	02.15.2024	ISSUED FOR BID
△A1	03.06.2024	ADDENDUM 1
△		
△		
△		
△		
△		

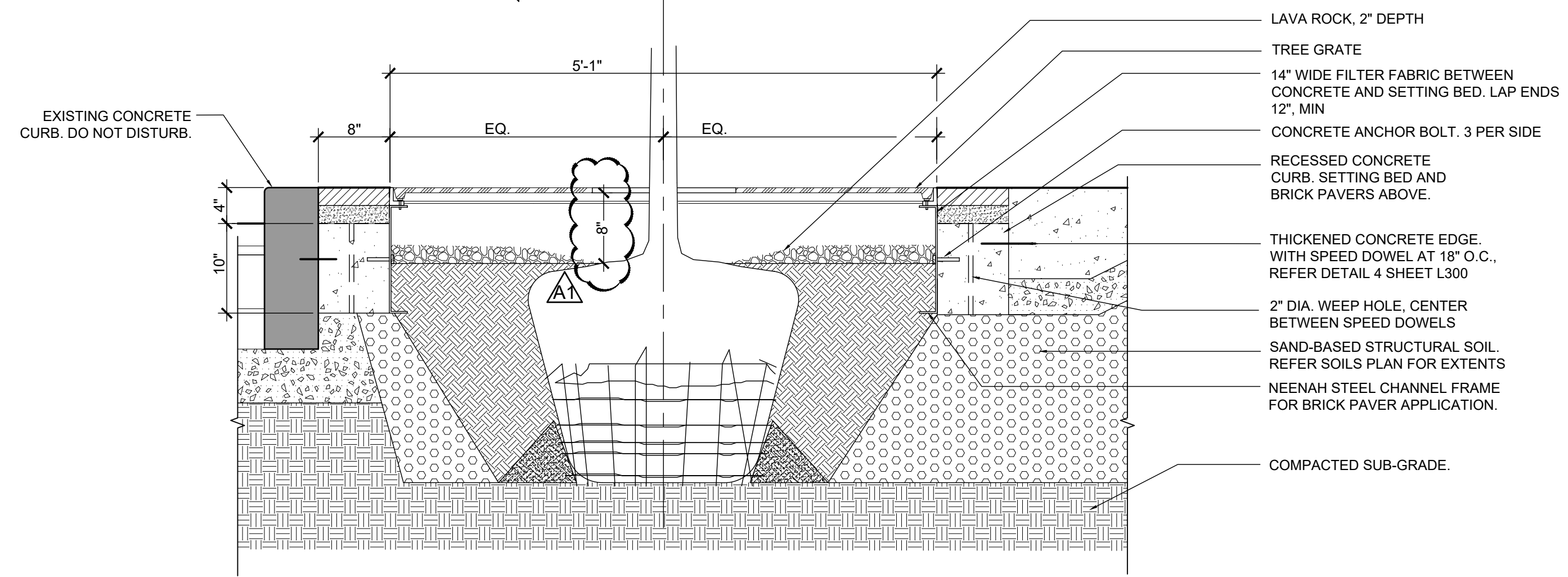
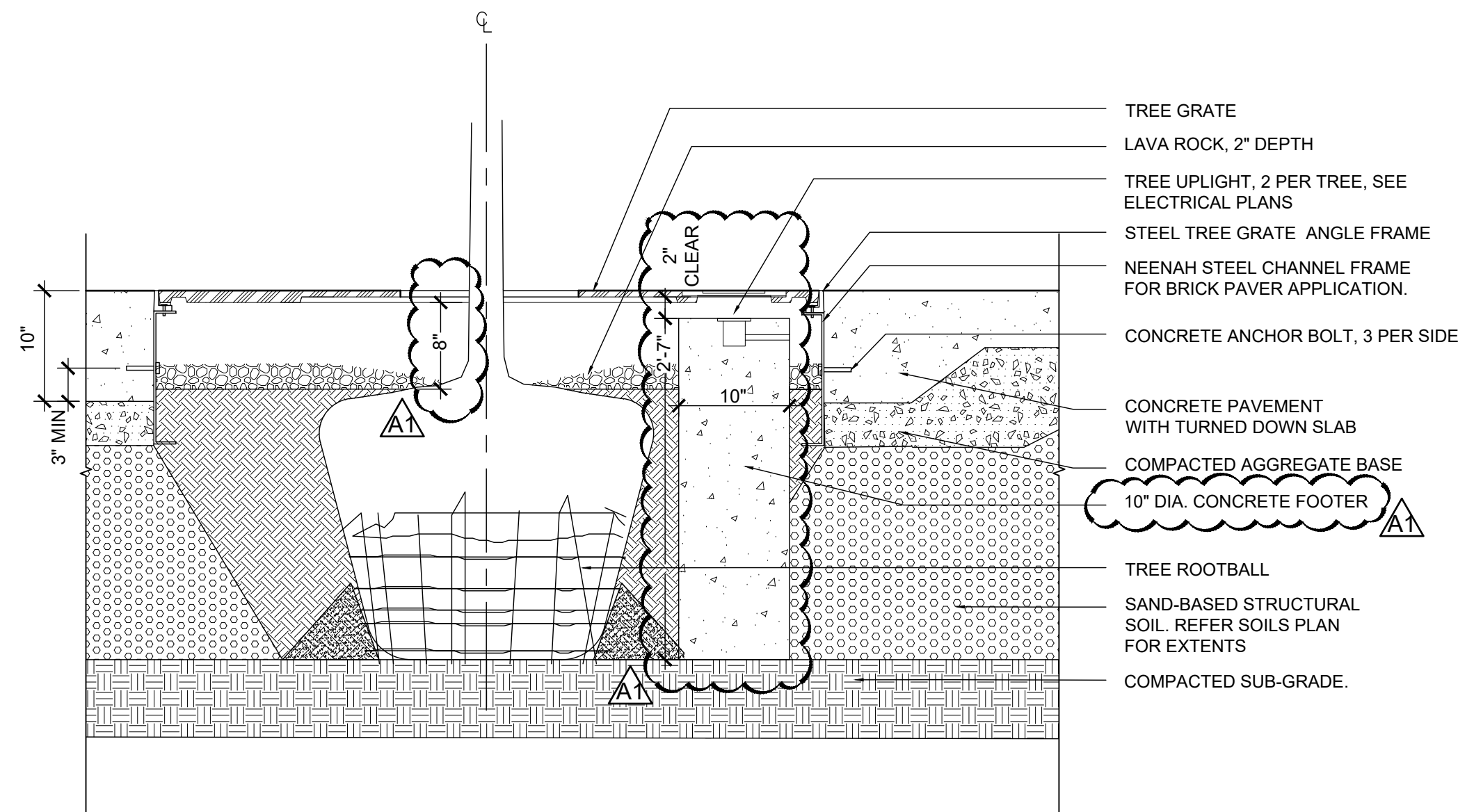
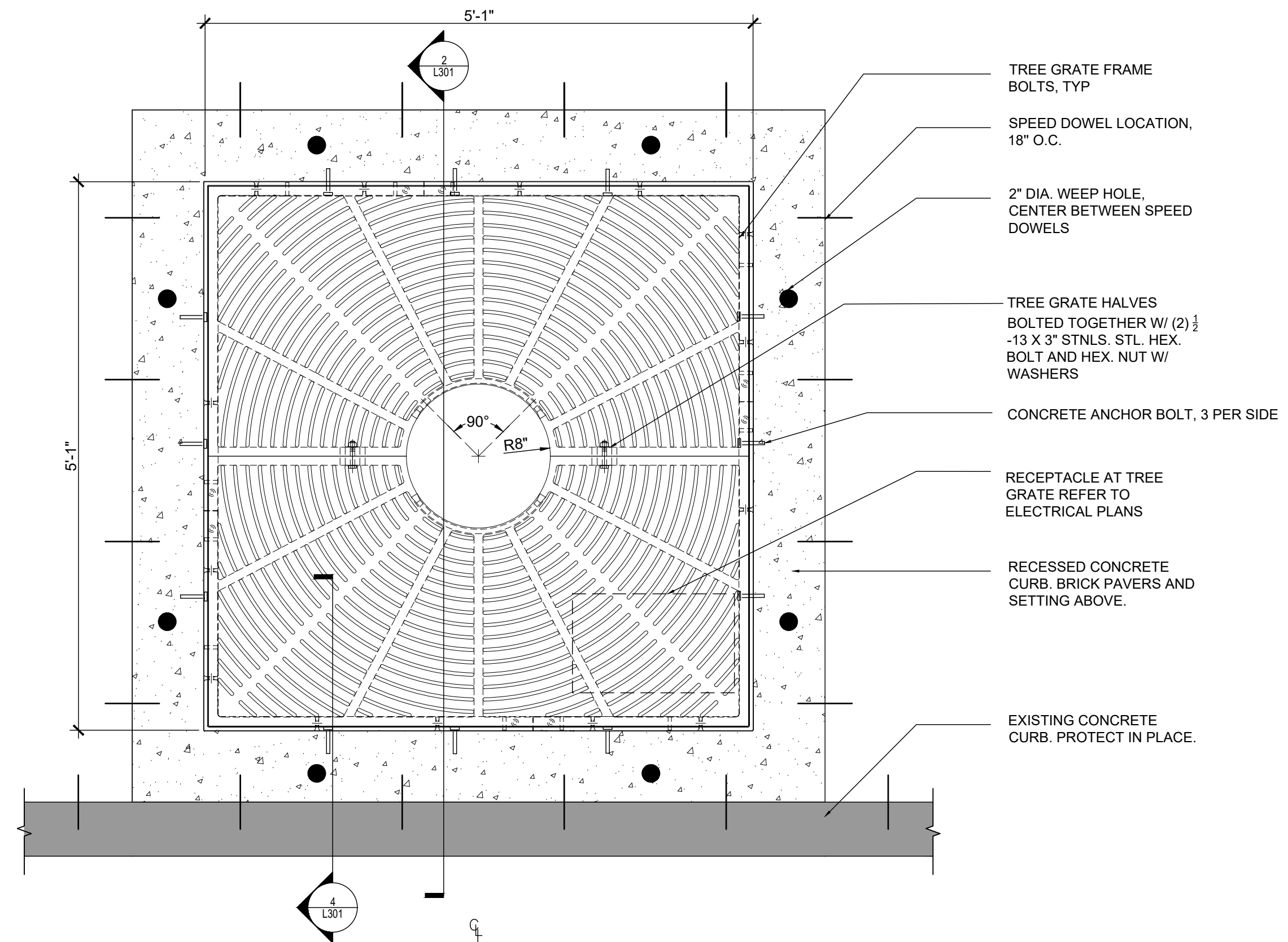
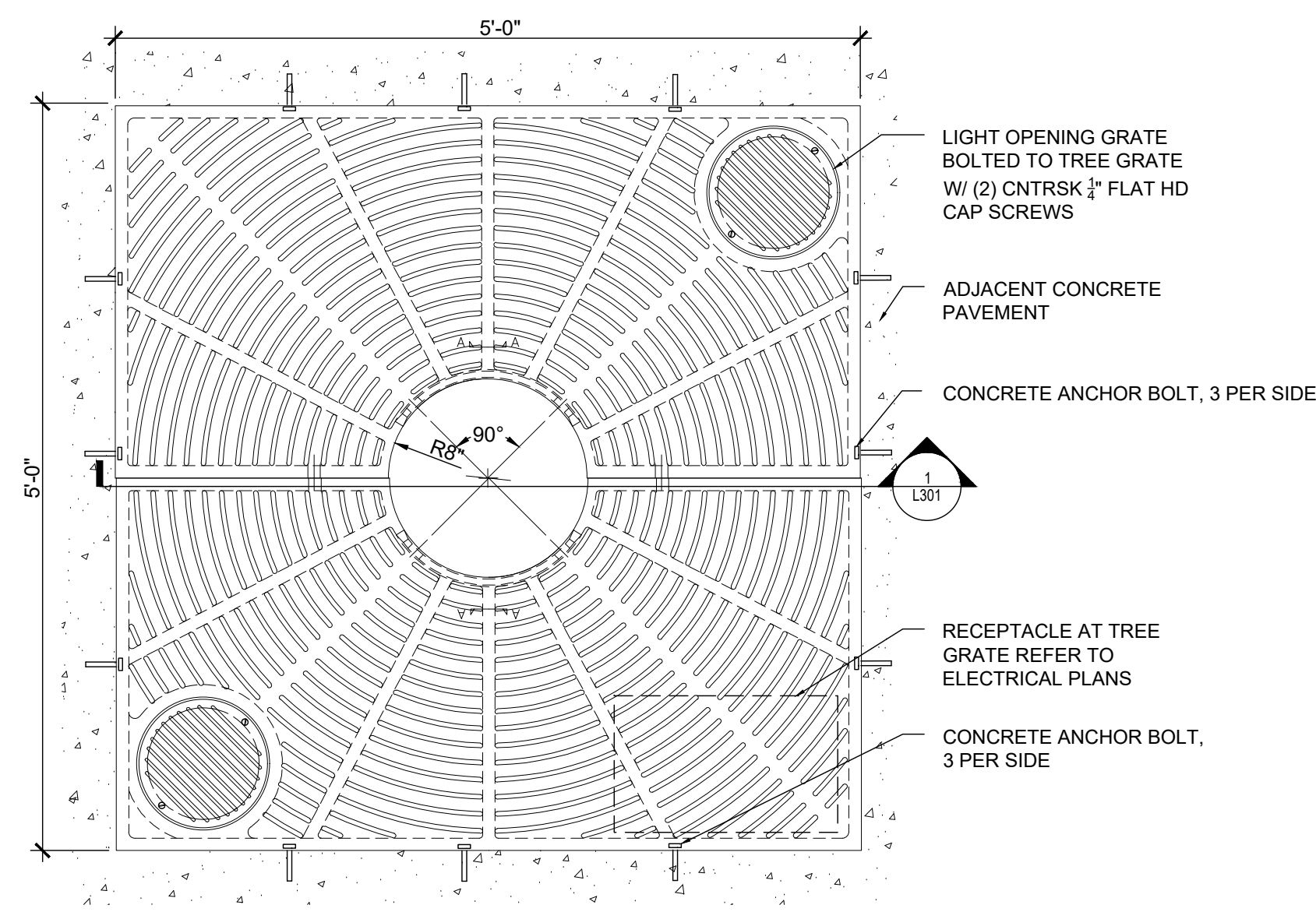
seal

issue date
02.15.2024
project number
n22229

sheet name
SITE DETAILS

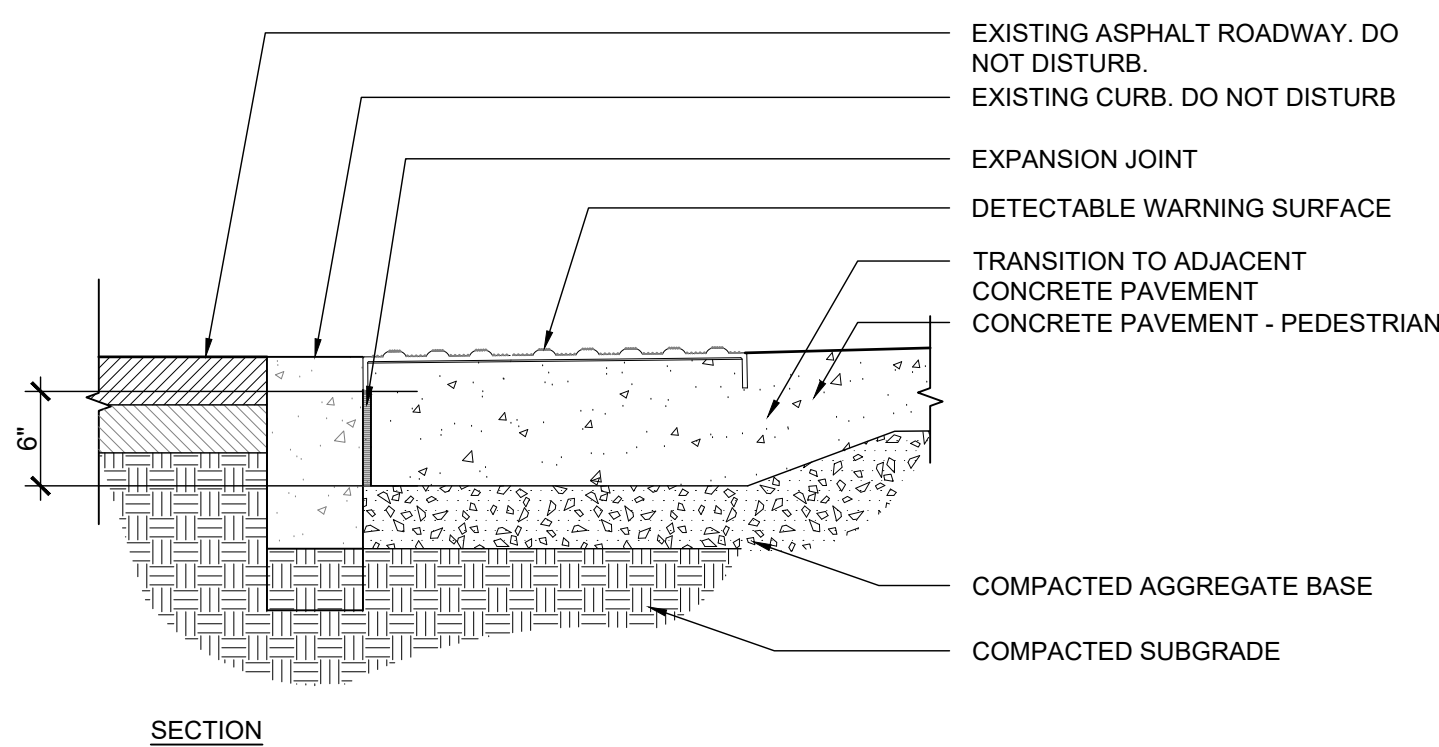
sheet number

L301

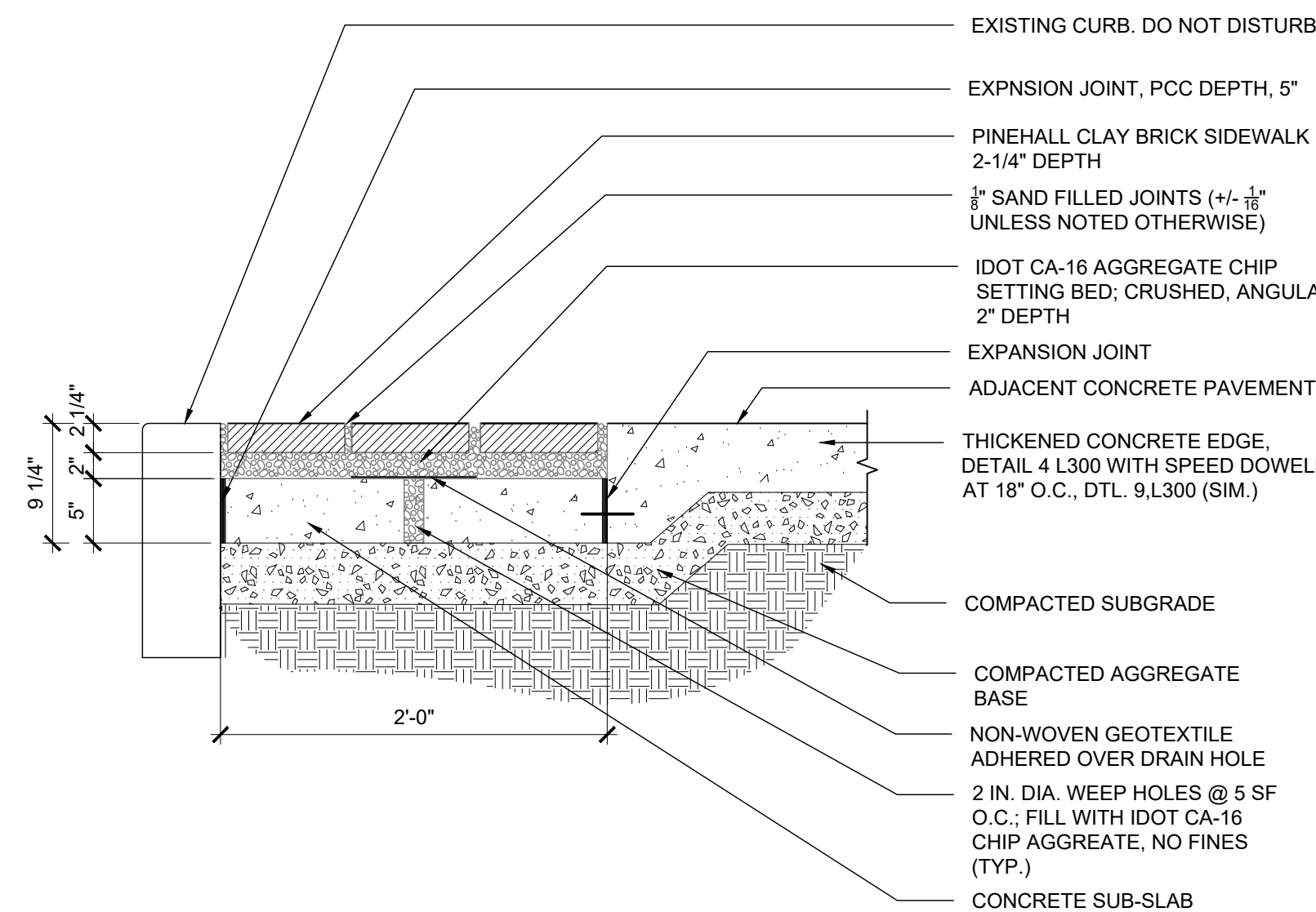


1 TREE GRATE AT PLAZA
SCALE: 1" = 1'-0"

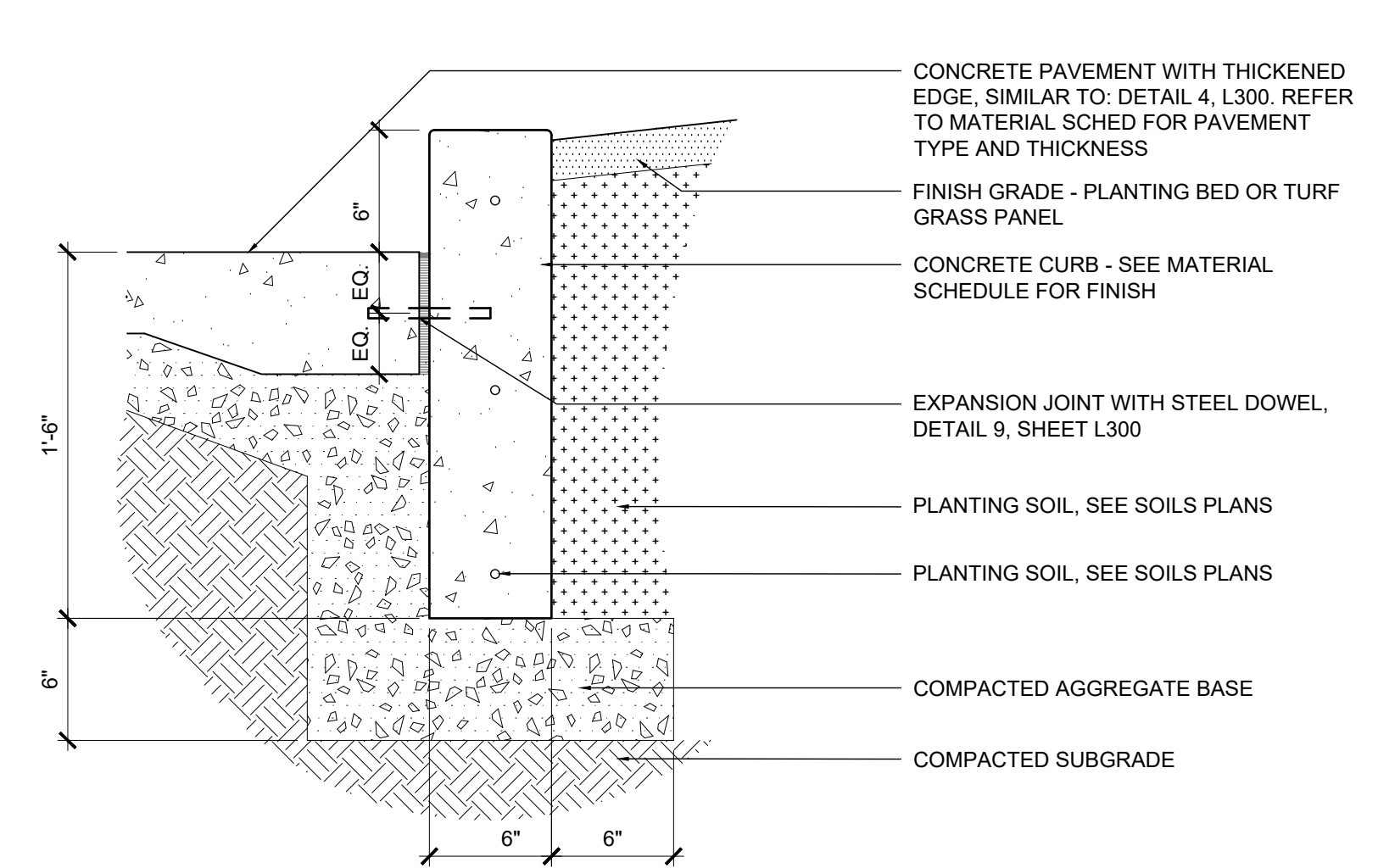
2 TREE GRATE - AT EXISTING CURB
SCALE: 1" = 1'-0"



3 ADA TACTILE PAVING
SCALE: 1" = 1'-0"



4 BRICK PAVER SIDEWALK
SCALE: 1" = 1'-0"



5 CONCRETE CURB ADJACENT CONC. PVMT & LANDSCAPE
SCALE: 1 1/2" = 1'-0"

**ISSUED FOR
BID**

NOT FOR
CONSTRUCTION

revision	date	issued
1	09.15.2023	30% CONSTRUCTION DOCUMENTS
2	11.03.2023	70% CONSTRUCTION DOCUMENTS
3	12.22.2023	100% CONSTRUCTION DOCUMENTS
4	02.15.2024	ISSUED FOR BID
5	03.06.2024	ADDENDUM 1
6		
7		
8		
9		
10		

seal

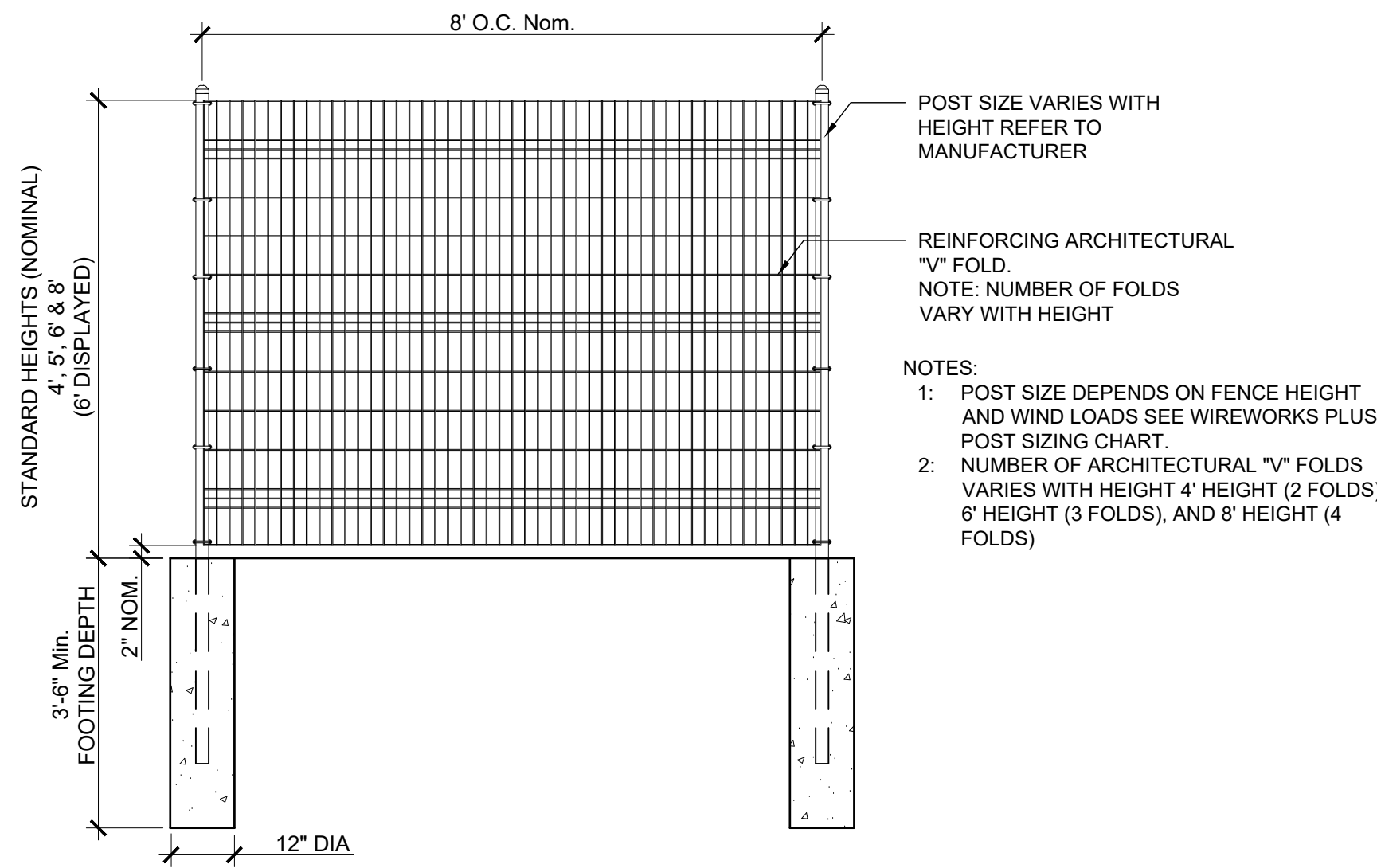
issue date
02.15.2024

project number
n22229

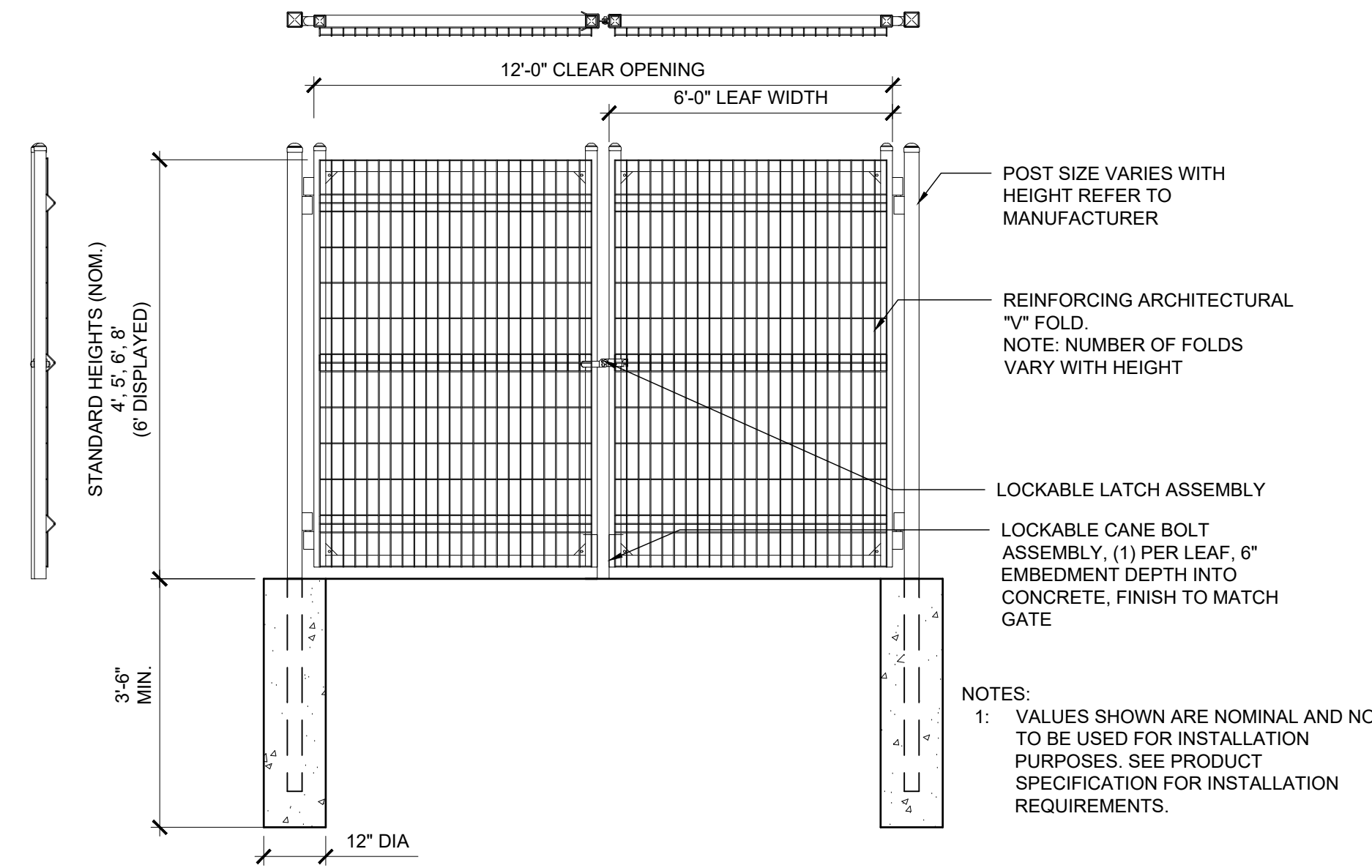
sheet name
SITE DETAILS

sheet number

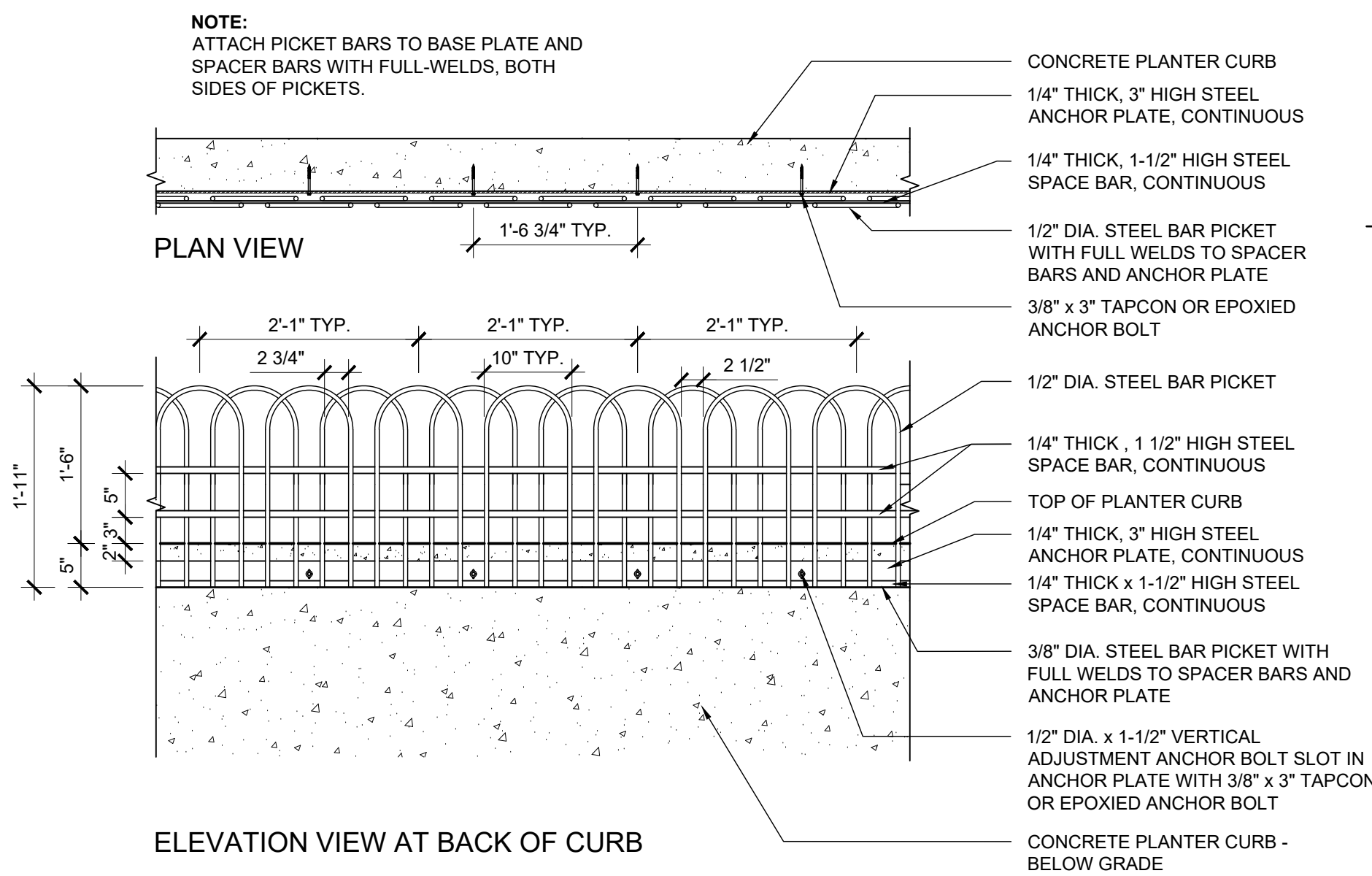
L304



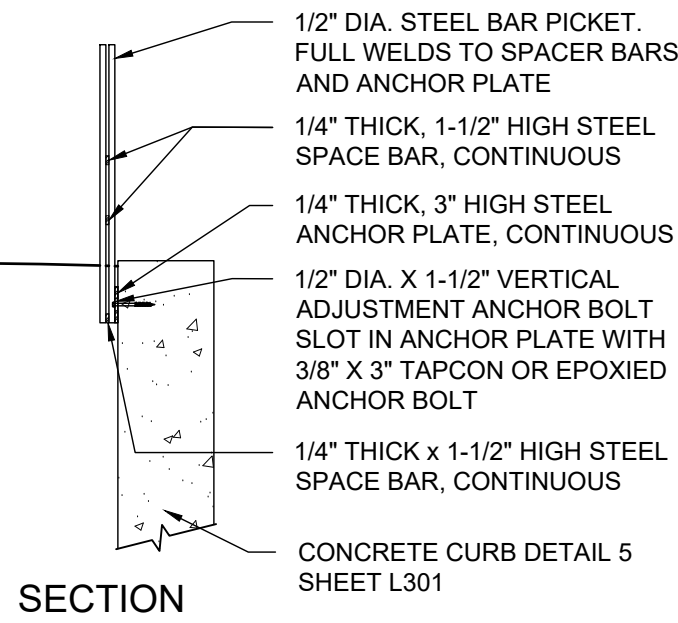
1 PANEL FENCING
SCALE: 1/2" = 1'-0"



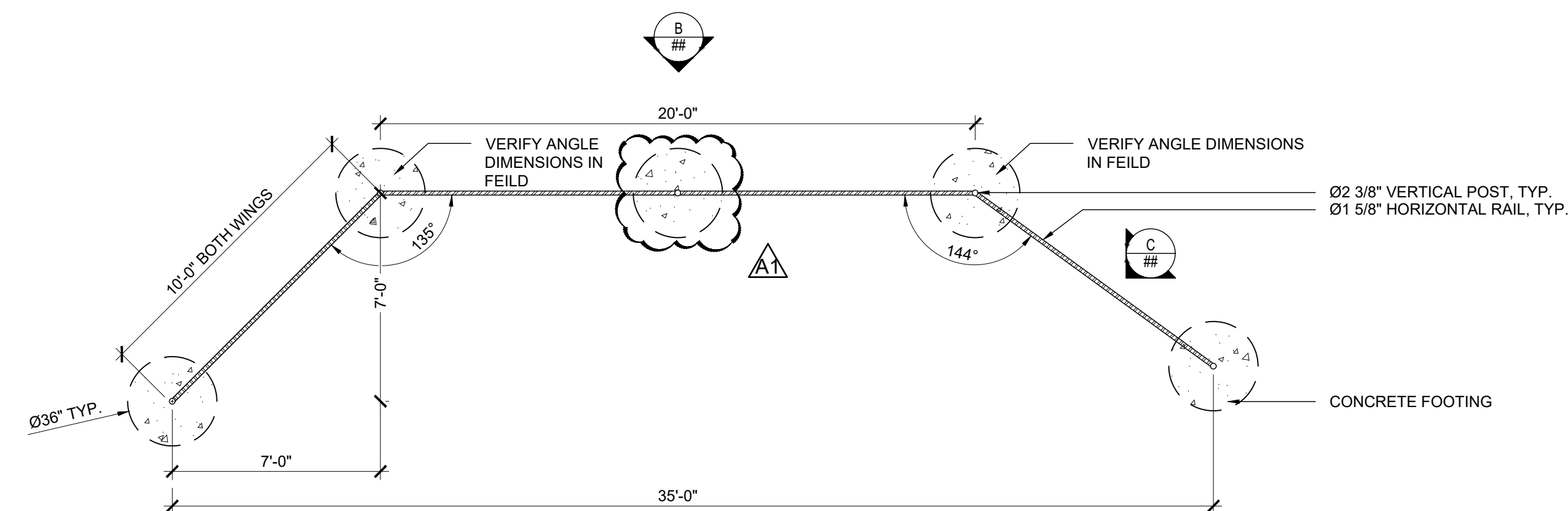
2 DOUBLE GATE
SCALE: 1/2" = 1'-0"



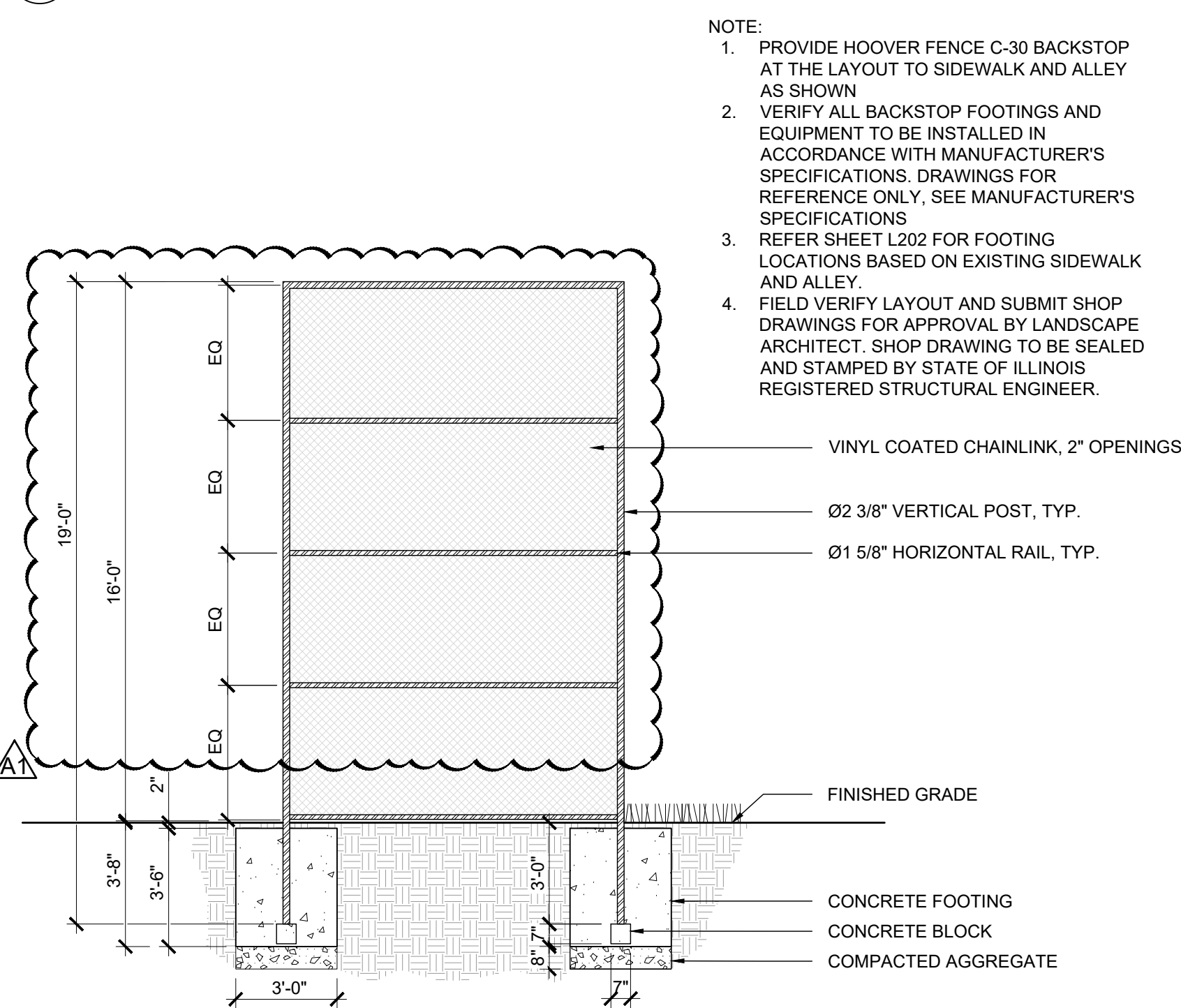
3 PLANTER FENCE - ALTERNATE 03
SCALE: 3/4" = 1'-0"



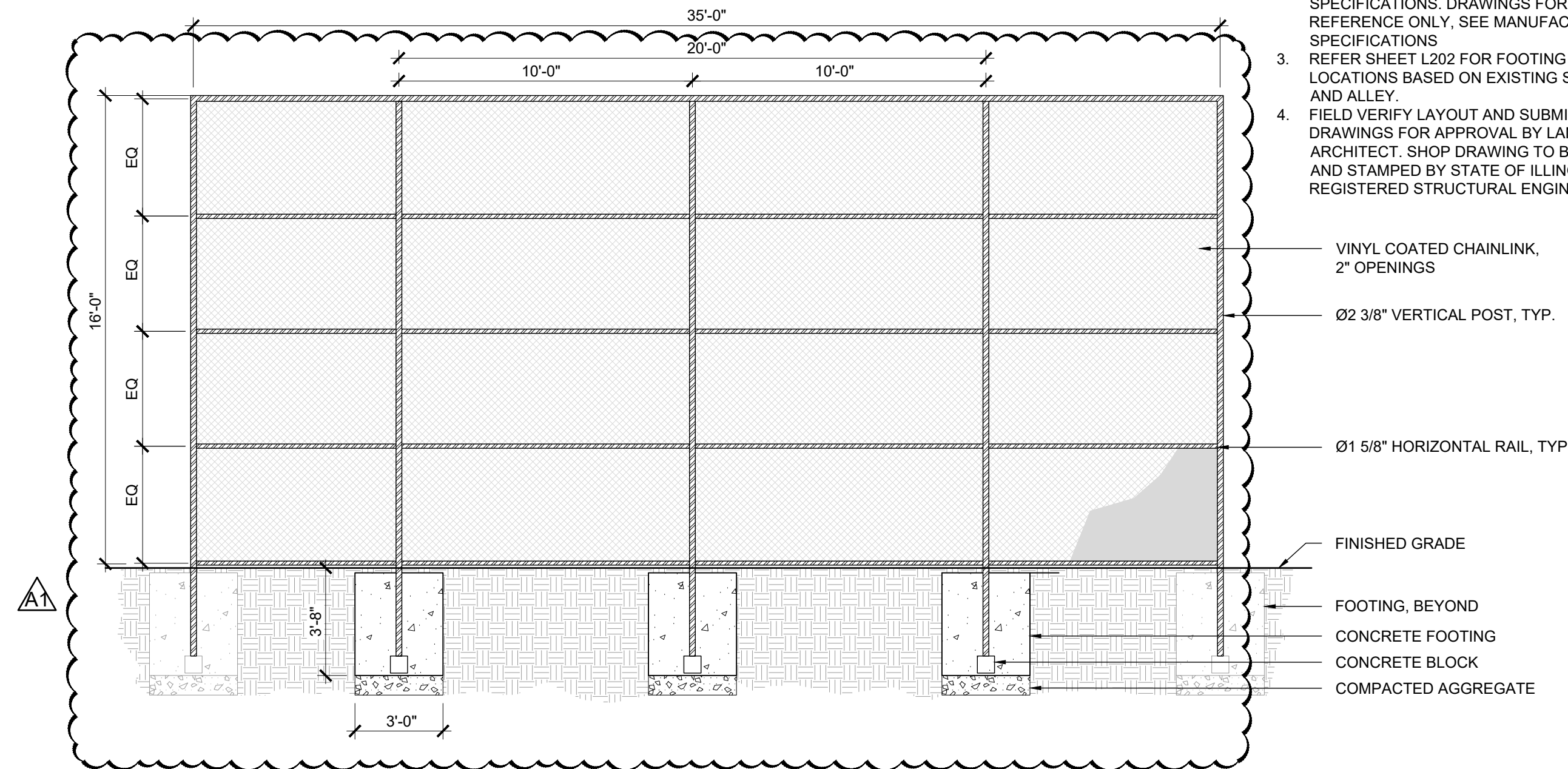
- NOTES:
- 1/2" SOLID ROUND BAR SPINDLES TACK WELDED TO EACH OTHER AT ALL OVERLAPS. ROUND BARS TO ALSO RECEIVE FULL WELD TO BOTTOM SIDE OF EACH HORIZONTAL CHANNEL.
 - HORIZONTAL CHANNELS TO BE ROLLED AS NECESSARY TO FOLLOW CURVATURE OF PLANTER AREAS.
 - FINISH IS STANDARD POWDER COAT PAINT, SATIN BLACK.
 - 5" TYPICAL SPACING IS SUFFICIENT TO KEEP HORIZONTAL BARS FROM SAGGING.
 - ALL EMBEDS TO BE SET IN PLANTERS USING CONCRETE ANCHOR BOLTS.



4 BACKSTOP - PLAN
SCALE: 1/4" = 1'-0"



5 BACKSTOP - SIDE ELEVATION
SCALE: 1/4" = 1'-0"



6 BACKSTOP - BACK ELEVATION
SCALE: 1/4" = 1'-0"

ISSUED FOR BID

NOT FOR
CONSTRUCTION

revision	date	issued
1	09.15.2023	30% CONSTRUCTION DOCUMENTS
2	11.03.2023	70% CONSTRUCTION DOCUMENTS
3	12.22.2023	100% CONSTRUCTION DOCUMENTS
4	02.15.2024	ISSUED FOR BID
4.1	03.06.2024	ADDENDUM 1
△		
△		
△		
△		
△		

seal

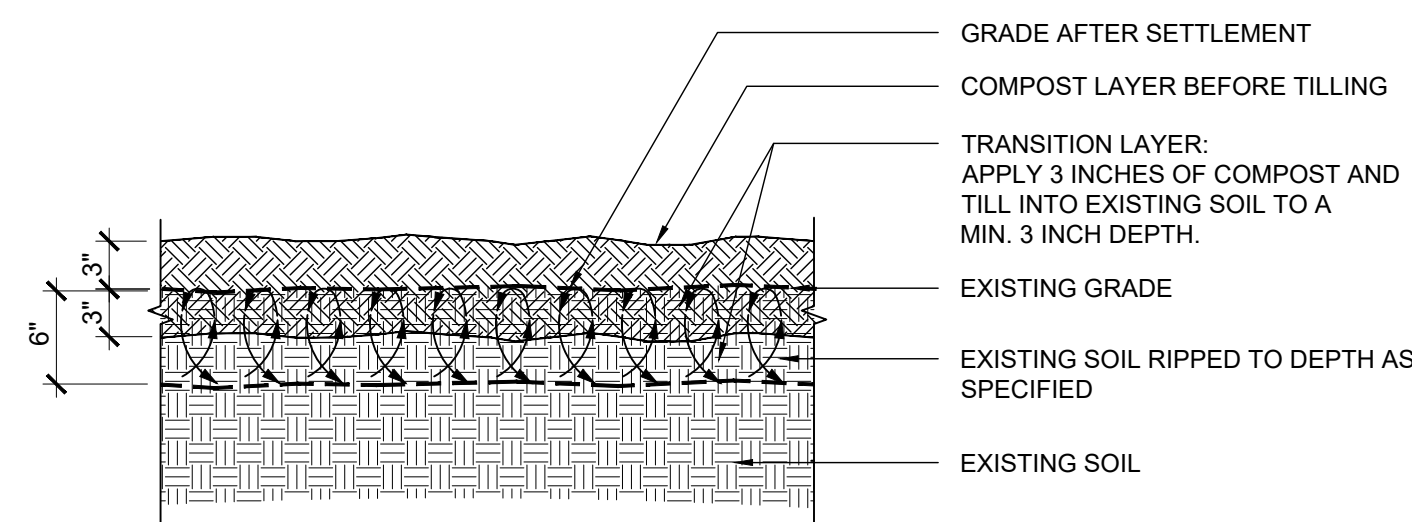
issue date
02.15.2024

project number
n22229

sheet name
SOIL DETAILS

sheet number
L310

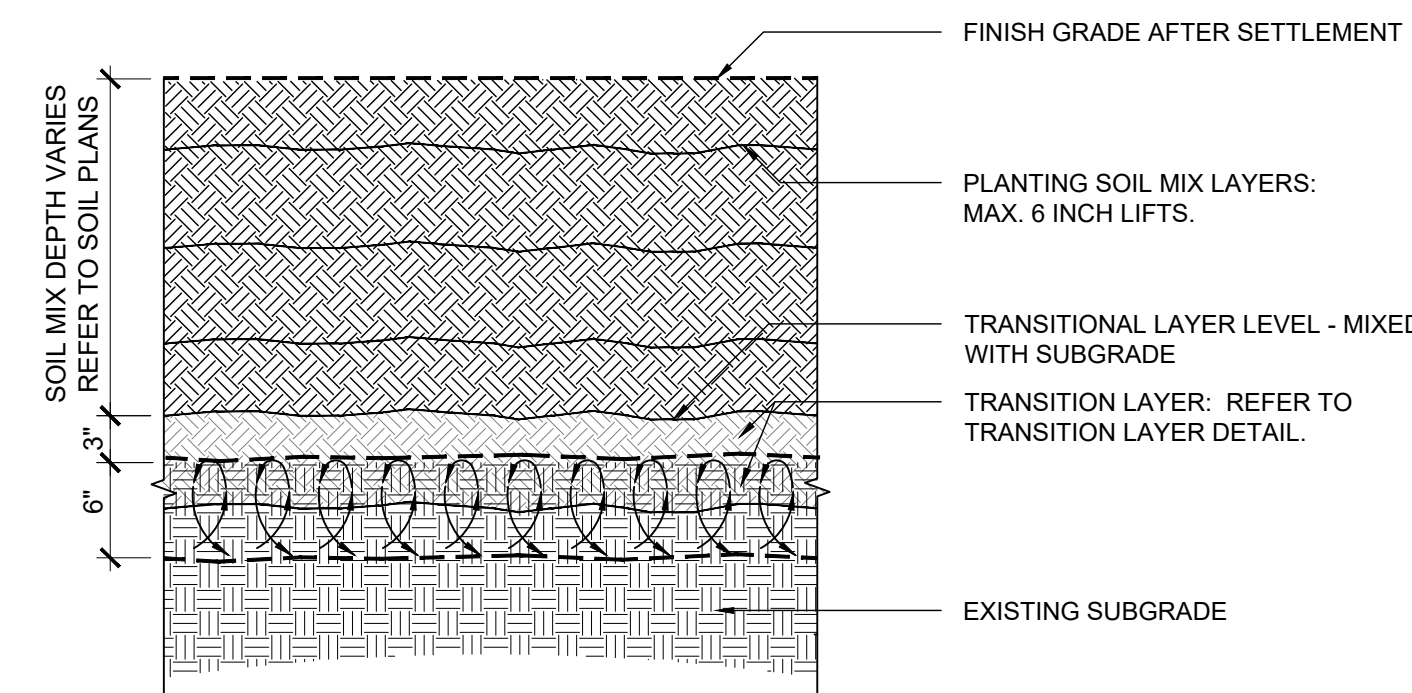
TRANSITION LAYER NOTE:
DIMENSIONS AND MATERIALS LISTED ARE FOR GENERAL
REFERENCE. REFER TO SPECIFICATIONS FOR RELATIVE AND
RELATED INFORMATION TO EACH MATERIAL ITEM AND
METHODS LISTED.



1 SOIL: TRANSITION LAYER - SUBGRADE PREPARATION

SCALE: 1" = 1'-0"

SOIL MIX INSTALLATION NOTE:
INSTALL PLANTING SOIL MIX AFTER TRANSITION LAYER HAS BEEN
COMPLETED AND COMPACTED TO SPECIFICATIONS. REFER TO
SOIL PLANS FOR SOIL MIX TYPE AND REQUIRED SOIL MIX DEPTH.

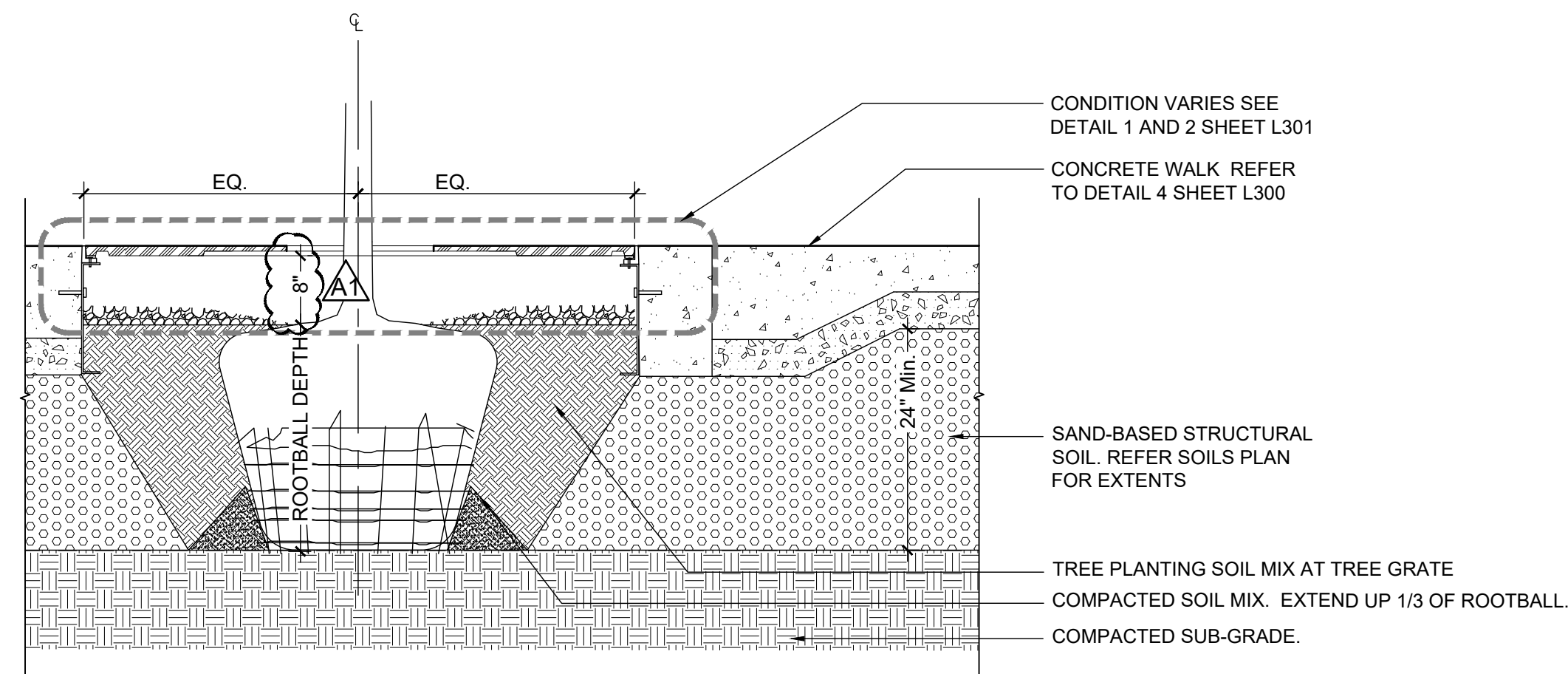


2 PLANTING SOIL MIX INSTALLATION

SCALE: 1" = 1'-0"

NOTES:

1. SET TREE PLUMB IN PLANTING PIT.
2. EACH TREE MUST BE PLANTED SUCH THAT THE TRUNK FLARE IS VISIBLE AT THE TOP OF THE ROOT BALL. TREES WHERE THE TRUNK FLARE IS NOT VISIBLE SHALL BE REJECTED. DO NOT COVER THE TOP OF THE ROOT BALL WITH SOIL.
3. REFER SHEET PLANTING PLAN FOR ADDITIONAL PLANTING NOTES.



4 TREE PLANTING IN TREE GRATE

SCALE: 3/4" = 1'-0"