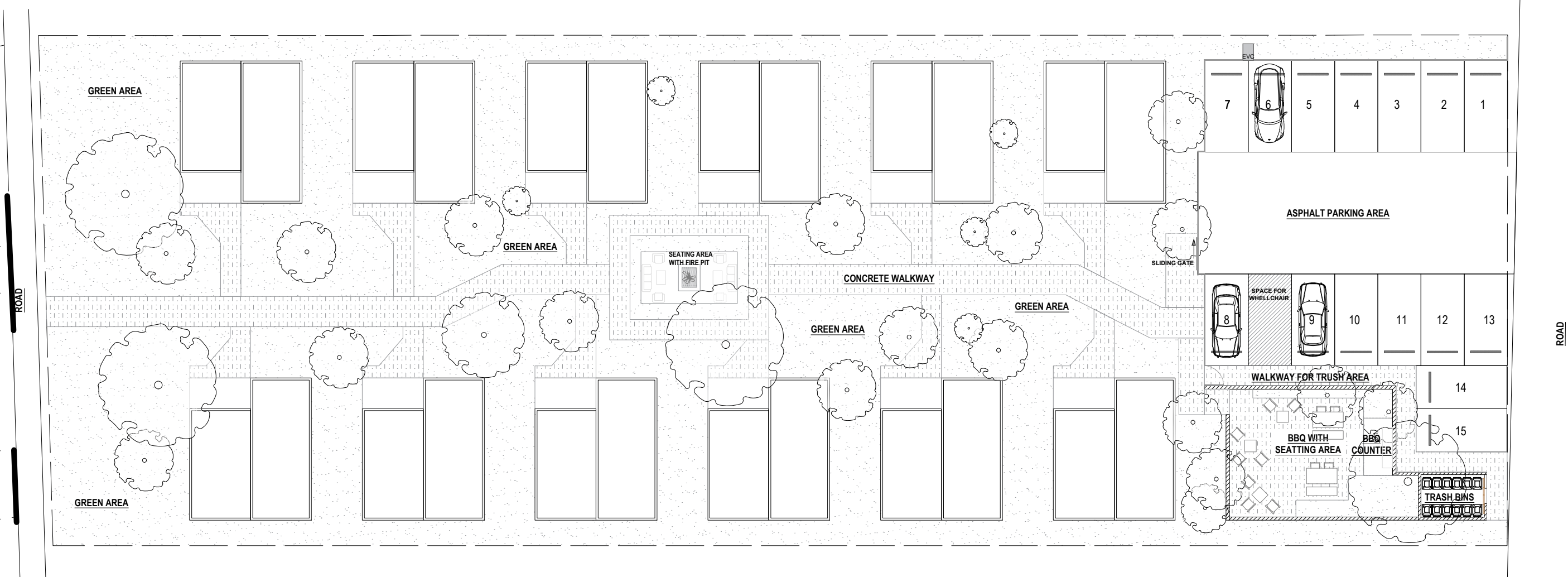
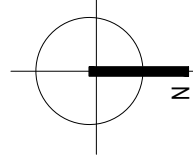
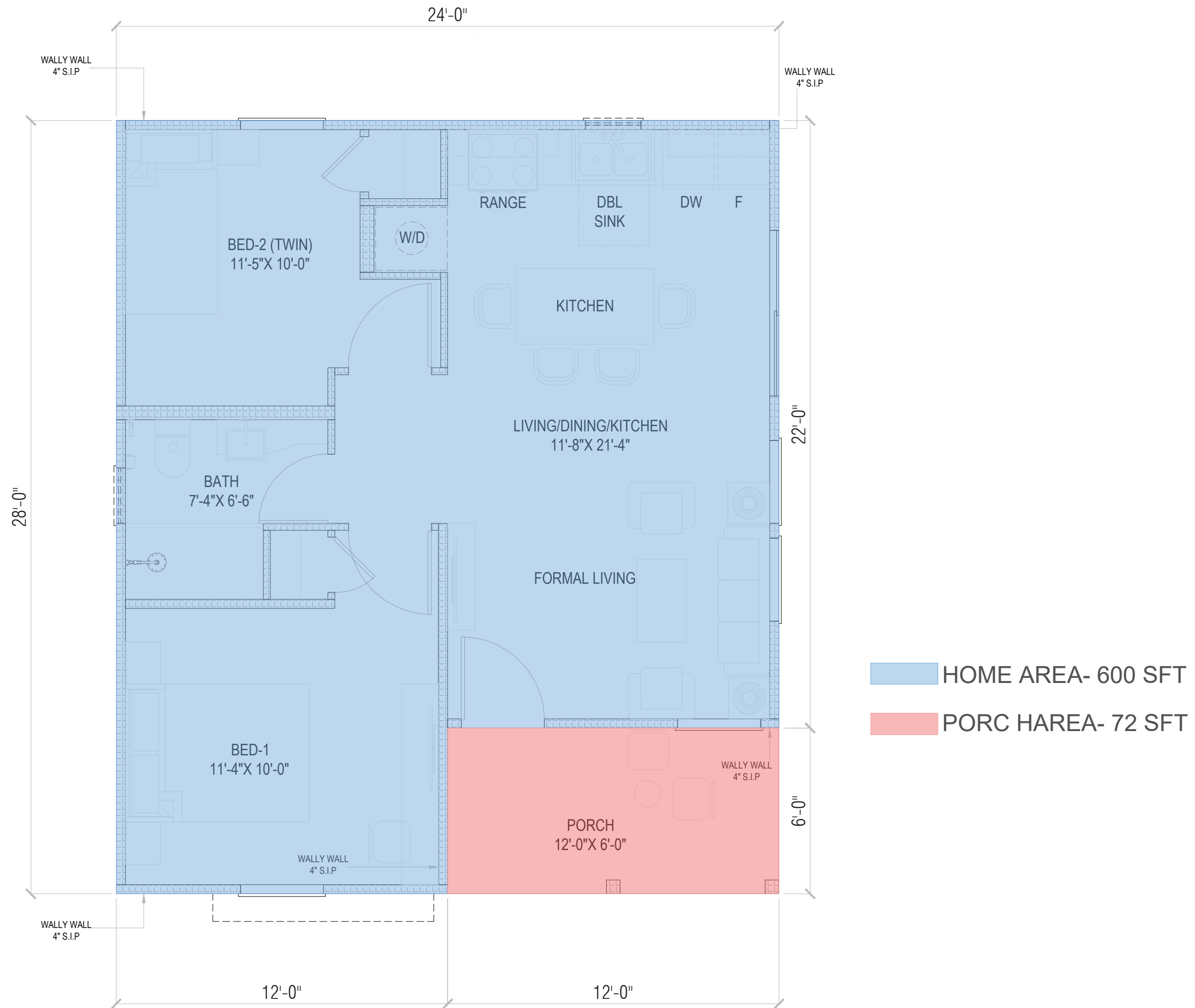


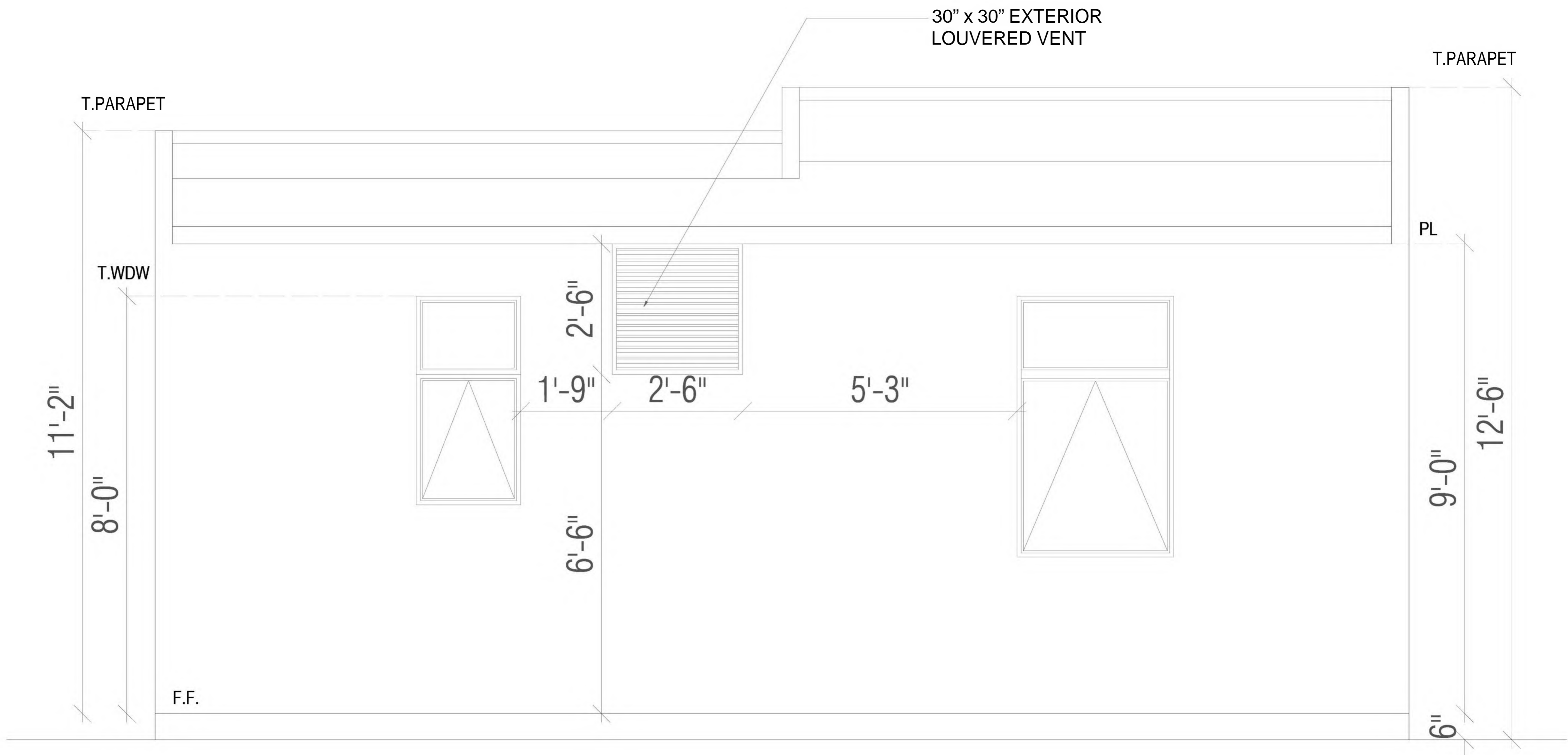
Master Plan WITH DIMENSION



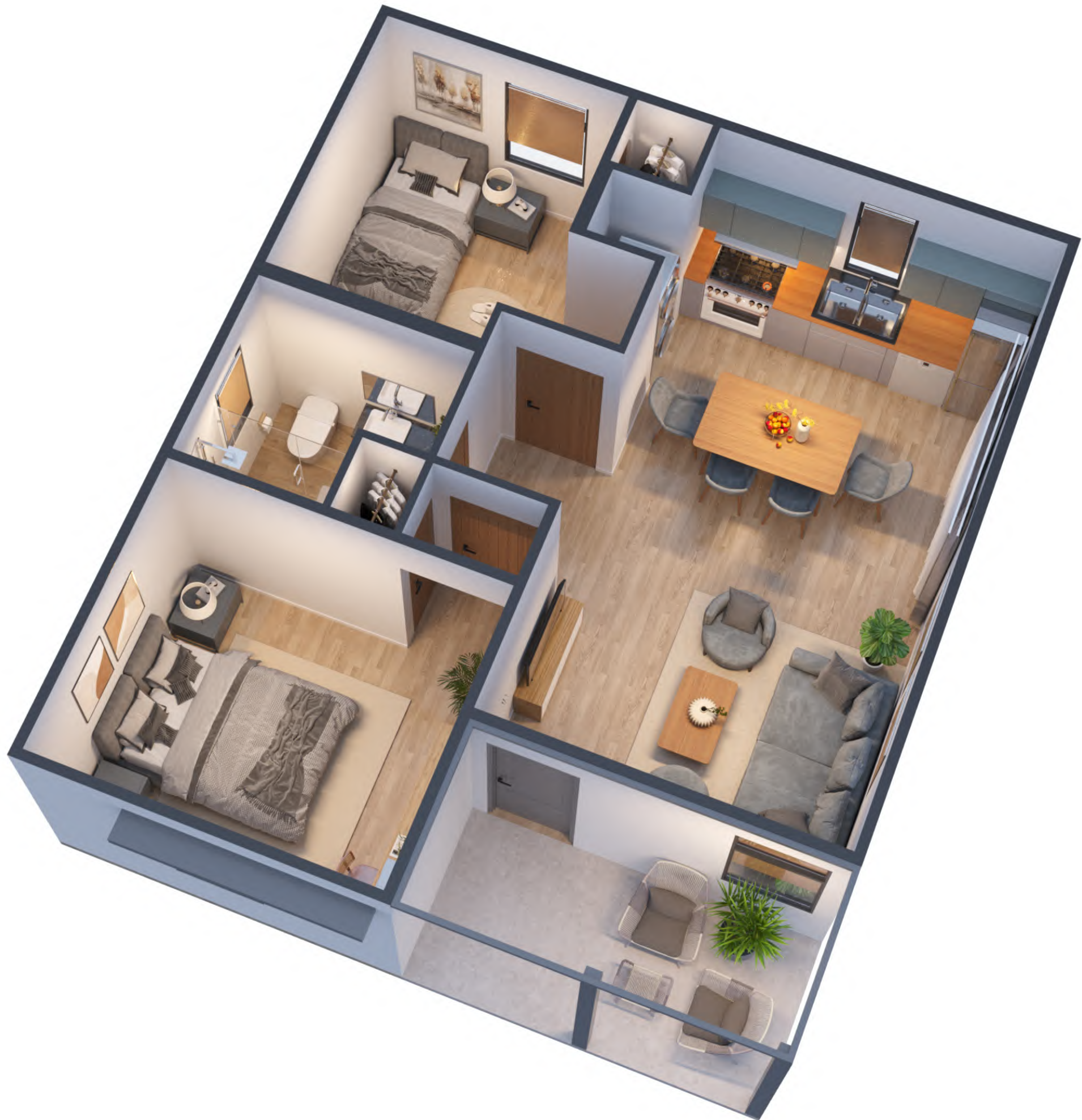

 Master Plan



FLOOR PLAN WITH DIMENSIONS (600 SFT)



**REAR ELEVATION (Updated)**



















# Contemporary Design Solutions for any Style. It's Possible™

Hardie™ Architectural Collection



Hardie® Artisan Siding - Shiplap  
Hardie® Architectural Panel - Fine Sand



# Reimagining what's possible for your home exterior.

Now, you can modernize your home's aesthetic in a variety of never-before-seen ways. Our latest, most innovative products go beyond more traditional exterior designs to create new looks to help you make your personalized vision a reality.



# Distinctive design, engineered to last.

## Hardie® Artisan Siding

Offering gorgeous, deep shadow lines and extra thick boards, Hardie® Artisan siding will set your home apart. The 5/8-inch thickness and unique features of Hardie® Artisan siding provide precise fit and finish as well as the freedom to miter corners for attractive, streamlined styling.

### TONGUE & GROOVE SYSTEM

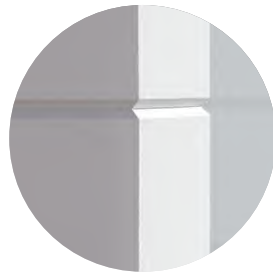
Hardie® Artisan siding flat wall profiles have a tongue & groove system that helps enable faster, cleaner installation. Orient vertically, horizontally or use as soffit.

### MITERED CORNERS

Add sophistication to your design with mitered corners that can be crafted on-site with any Hardie® Artisan profile.



Tongue & Groove System

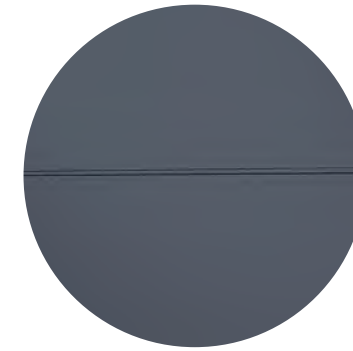


Mitered Corners



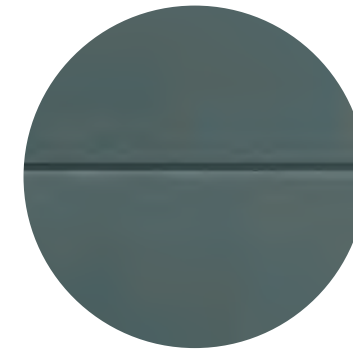
Hardie® Artisan Siding V-Groove

## Hardie® Artisan Siding



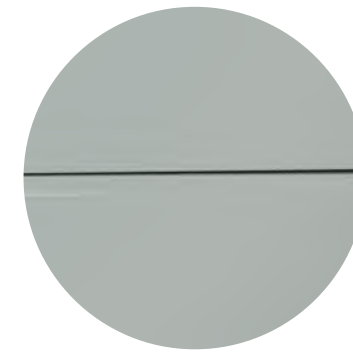
Shiplap

<b>Shiplap</b>	<b>Thickness 5/8 in</b>	
<b>Width</b>	10.25 in	(9 in exposure)
<b>Length</b>	12 ft	
<b>Pcs/Pallet</b>	105	
<b>Prime</b>	•	



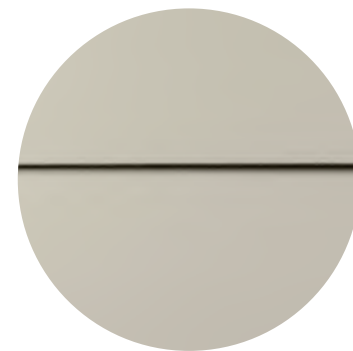
V-Groove

<b>V-Groove</b>	<b>Thickness 5/8 in</b>	
<b>Width</b>	8.25 in	(7 in exposure)
<b>Length</b>	12 ft	
<b>Pcs/Pallet</b>	126	
<b>Prime</b>	•	



Square Channel

<b>Square Channel</b>	<b>Thickness 5/8 in</b>	
<b>Width</b>	10.25 in	(9 in exposure)
<b>Length</b>	12 ft	
<b>Pcs/Pallet</b>	105	
<b>Prime</b>	•	



Lap Siding

<b>Lap Siding</b>	<b>Thickness 5/8 in</b>	
<b>Width</b>	7.25 in (6 in exposure)	8.25 in (7 in exposure)
<b>Length</b>	12 ft	12 ft
<b>Pcs/Pallet</b>	144	125
<b>Prime</b>	Coming soon	Coming soon



# Discover a fresh look that is unmistakably you.

## Hardie™ Architectural Collection

Reimagine what's possible for your home with the Hardie™ Architectural Collection. Offering contemporary design solutions to fit any style, you can elevate your exterior with a gorgeous, fresh perspective.

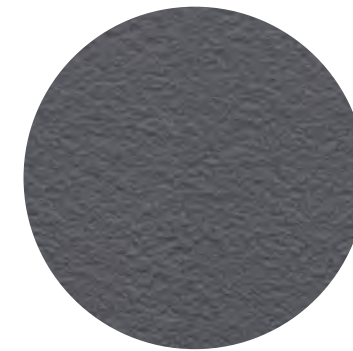
Going beyond wood-look designs, the clean lines of the Hardie® Architectural Panels can help achieve a range of styles from traditional to more modern looks. Orient them horizontally or vertically, or mix them with other Hardie® products, to create a truly unique design that speaks to your aesthetic.



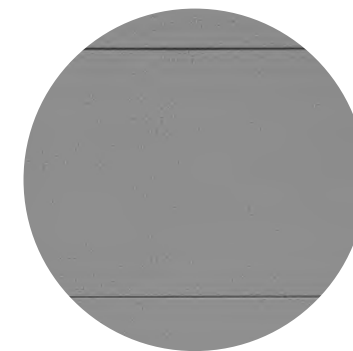
Scan code to view the Look Book.



## Hardie® Architectural Panels



Fine Sand



Fine Sand-Grooved



Mounded Sand



Sea Grass

Fine Sand		Thickness 5/16 in	
Width	4 ft	4 ft	4 ft
Length	8 ft	10 ft	12 ft
Pcs/Pallet	50	50	40
Statement Collection™			
Dream Collection™			
Prime	•	•	•
Fine Sand-Grooved		Thickness 5/16 in	
Width	4 ft	4 ft	4 ft
Length	8 ft	10 ft	12 ft
Pcs/Pallet	50	50	40
Statement Collection™			
Dream Collection™			
Prime	•	•	•
Mounded Sand		Thickness 5/16 in	
Width	4 ft	4 ft	4 ft
Length	8 ft	10 ft	12 ft
Pcs/Pallet	50	50	40
Statement Collection™			
Dream Collection™			
Prime	•	•	•
Sea Grass		Thickness 5/16 in	
Width	4 ft	4 ft	4 ft
Length	8 ft	10 ft	12 ft
Pcs/Pallet	50	50	40
Statement Collection™			
Dream Collection™			
Prime	•	•	•

Visit [jameshardie.com/hardie-architectural-collection](https://www.jameshardie.com/hardie-architectural-collection) for current availability.



# Clean lines that are sure to make your home shine.

## Hardie™ Architectural Trims

New looks with new metal trim options to match. As part of the Hardie™ Architectural Collection, Hardie™ Architectural Trims offer a variety of benefits in helping you achieve a seamless, lasting look for your exterior:

- Slim profiles complement panel sizes and deliver clean architectural lines
- Multiple aesthetic options that enable endless design possibilities
- Delivers long-lasting beauty and stands up to the elements
- Integrated solution of panels and metal trims designed for better water management
- Easy to cut and install



Scan code to view the Look Book.



## Hardie™ Architectural Trims

**Corner trims** | Slimline corner trims designed to deliver a sleek contemporary look.



**Low-Profile Inside Corner Trim**

Aluminum extrusion to be used for inside corners.



**Low Profile 45° Inside Corner Trim**

Aluminum extrusion to be used for bay windows.



**Inside Corner Trim**

Aluminum extrusion to be used for inside corners.



**Low Profile 45° Outside Corner Trim**

Aluminum extrusion to be used for bay windows.



**Low-Profile Outside Corner Trim**

Aluminum extrusion to be used for outside corners.

**Transition trims** | Helps accentuate transition areas for a more complete and finished look.



**Low Profile Inside Corner Transition**

Provides clean vertical and horizontal options for transitions from panel siding to lap siding.



**2-piece J Trim**

Provides a clean finish at openings, edges of panels and at material transitions.



**Low Profile Outside Corner Transition**

Very popular face sizes which offer a clean outside corner for transitioning from vertical siding panels to lap siding.



**J Trim**

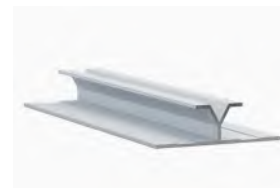
Aluminum extrusion to be used as a trim at abutments (e.g. soffits, masonry, windows, etc.).



**Vertical Siding H-Mold Transition**

Designed to cover vertical joints where you transition from panel siding to lap siding.

**Joint and end trims** | Designed for clean finishes on short and cut ends of panels.



**Vertical Y Trim**

Aluminum extrusion to be used along vertical butt joints. For horizontal panel orientations only.



**Vertical H Trim**

Aluminum extrusion to be used along vertical butt joints. For horizontal panel orientations only.



**Low Profile Horizontal Z Trim**

Aluminum extrusion to be used along horizontal control joints.



**Horizontal Z Flashing Trim**

Aluminum extrusion to be used along horizontal control joints.

**Base trims** | Base trim and accessories for a clean and robust ground finish.



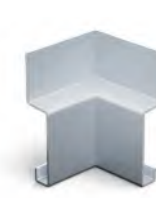
**Base Trim**

Aluminum extrusion to be used as a base edge solution.



**Base Outside Corner Trim**

To be used as an outside corner connection for Base trim.



**Base Outside Inside Trim**

To be used as an inside corner connection for Base trim.



**Base Joiner**

To be used to connect Base trims.

# Tougher than the elements.



## Fire Resistant

A home's exterior is its first line of defense against extreme weather and fire. Prepare your home for the unpredictable with siding that is non-combustible and won't burn.

- Listed for use in wildfire-prone Wilderness Urban Interface (WUI) zones in the western US.
- Cal-Fire compliant



## Pests

Mother Nature's creatures can wreak havoc on wood-based siding. It can be pecked by birds or damaged by termites or other pests. Save yourself the maintenance hassle — don't let your home fall prey to these critters.



## Mother Nature

Mother Nature: Your siding is exposed to Mother Nature all day, every day. You deserve to feel confident that it can hold its own throughout it all — from the changing seasons to even the most extreme weather.

- FEMA Class 5 flood damage resistance (highest rating)
- Rated for use in High Velocity Hurricane zones by Miami-Dade County Florida



## Water-Resistant

From rain to ice to snow, Mother Nature's precipitation patterns leave wood exteriors at risk to cracking, swelling and warping. Take shelter from the storm knowing that your exterior is built to withstand water damage and exterior destruction.



## Warranty — for peace of mind

Help protect your home with North America's #1 brand of siding, backed by exceptional warranties.

Unlike other brands, James Hardie doesn't prorate our siding and trim substrate warranty coverage. We stand 100% behind our siding for 30 years and our trim for 15 years.

- Hardie® siding and soffit products come with a 30-year non-prorated limited substrate warranty.
- Hardie® trim products come with a 15-year non-prorated limited substrate warranty.
- ColorPlus® Technology finishes come with a 15-year prorated limited finish warranty.

### Non-Prorated Siding Substrate Warranty Coverage by James Hardie



Year 10



Year 20



Year 30

## Endorsements — a reputation built on trust

For decades, our fiber cement products have been used to create better places to live. Each new home stands as a testament to our uncompromising quality. That proven track record has earned us the loyalty of millions of homeowners and the endorsements of trusted authorities across the building industry.



Featured on  
Magnolia Network's Fixer Upper:  
*Welcome Home 2021*



Featured on  
HGTV's  
*Urban Oasis 2022*



Fast Company's 2022 Innovation by  
Design Awards  
"The best home design of 2022"  
*Hardie™ Architectural Collection*

\*Hardie® siding complies with ASTM E136 as a noncombustible cladding and is recognized by fire departments across the U.S. including Marietta, GA, Flagstaff, AZ and Orange County, CA. Fiber cement fire resistance does not extend to applied paints or coatings, which may be damaged or char when exposed to flames.



Hardie® Artisan  
Siding  
V-Groove

#MyHardieHome | 1.888.542.7343 | jameshardie.com



© 2023 James Hardie Building Products Inc. All Rights Reserved. TM, SM, and ® denote trademarks or registered trademarks of James Hardie Technology Limited. HS2305 01/23

