

MOUNT PISGAH

1805 Church St, Evanston, IL 60201



CONTEXT





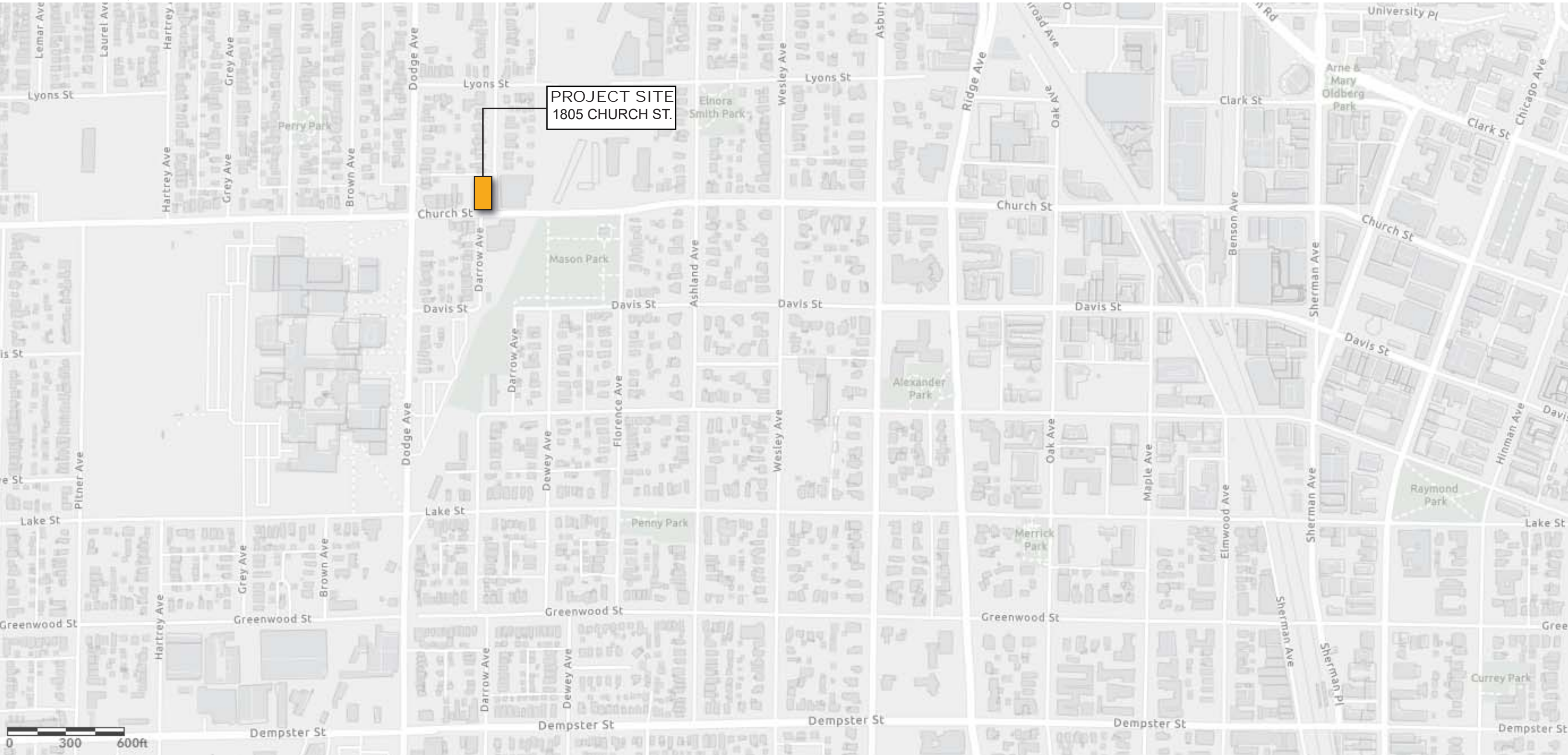
MOUNT PISGAH
1805 Church St, Evanston, IL 60201

Project Number: 19001
Issue Date: 12.23.2022

A001

MT. PISGAH

EVANSTON, IL



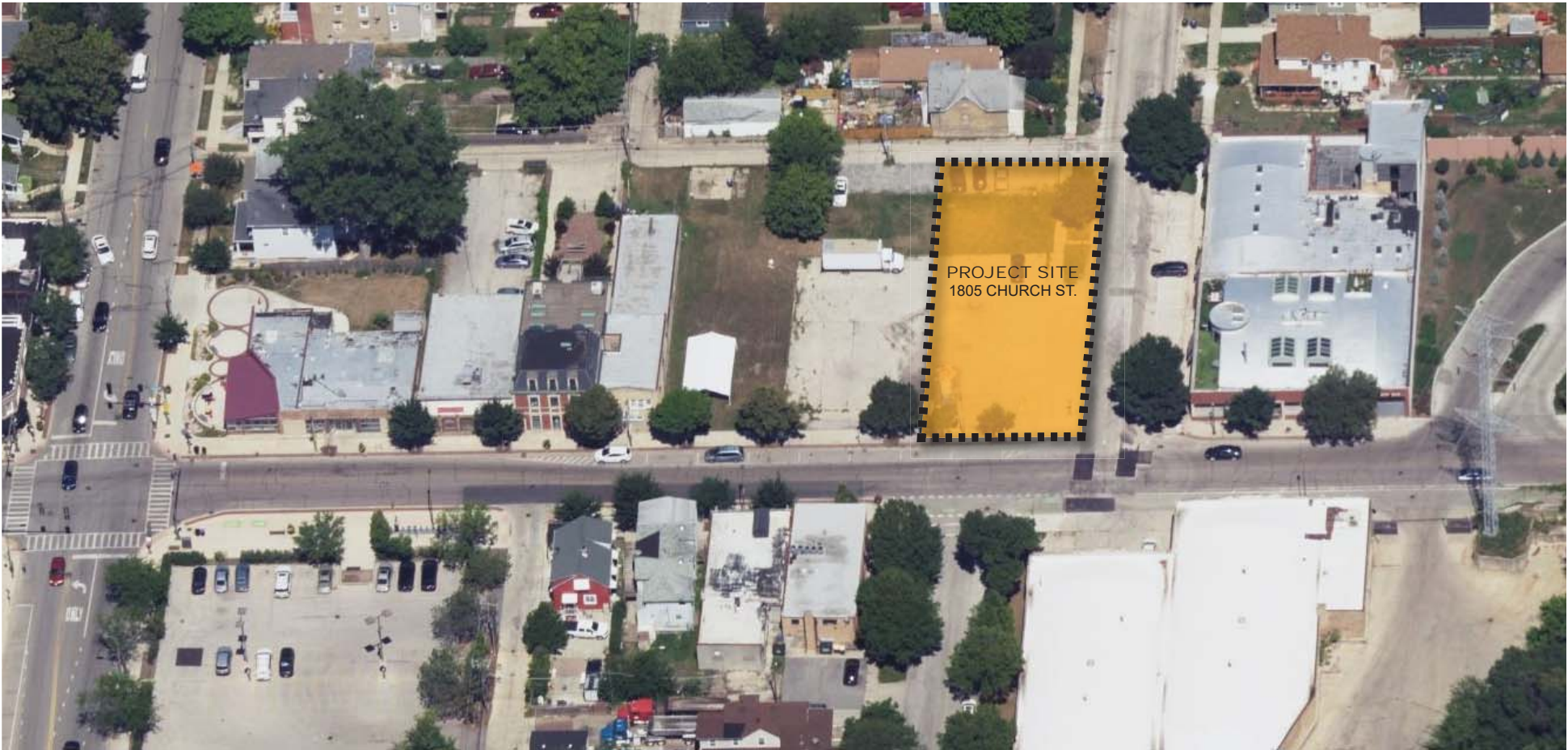
URBAN CONTEXT PLAN - EVANSTON, IL

Project Number: 19001
Issue Date: 12.23.2022

A002

MT. PISGAH

EVANSTON, IL



URBAN CONTEXT - EVANSTON, IL

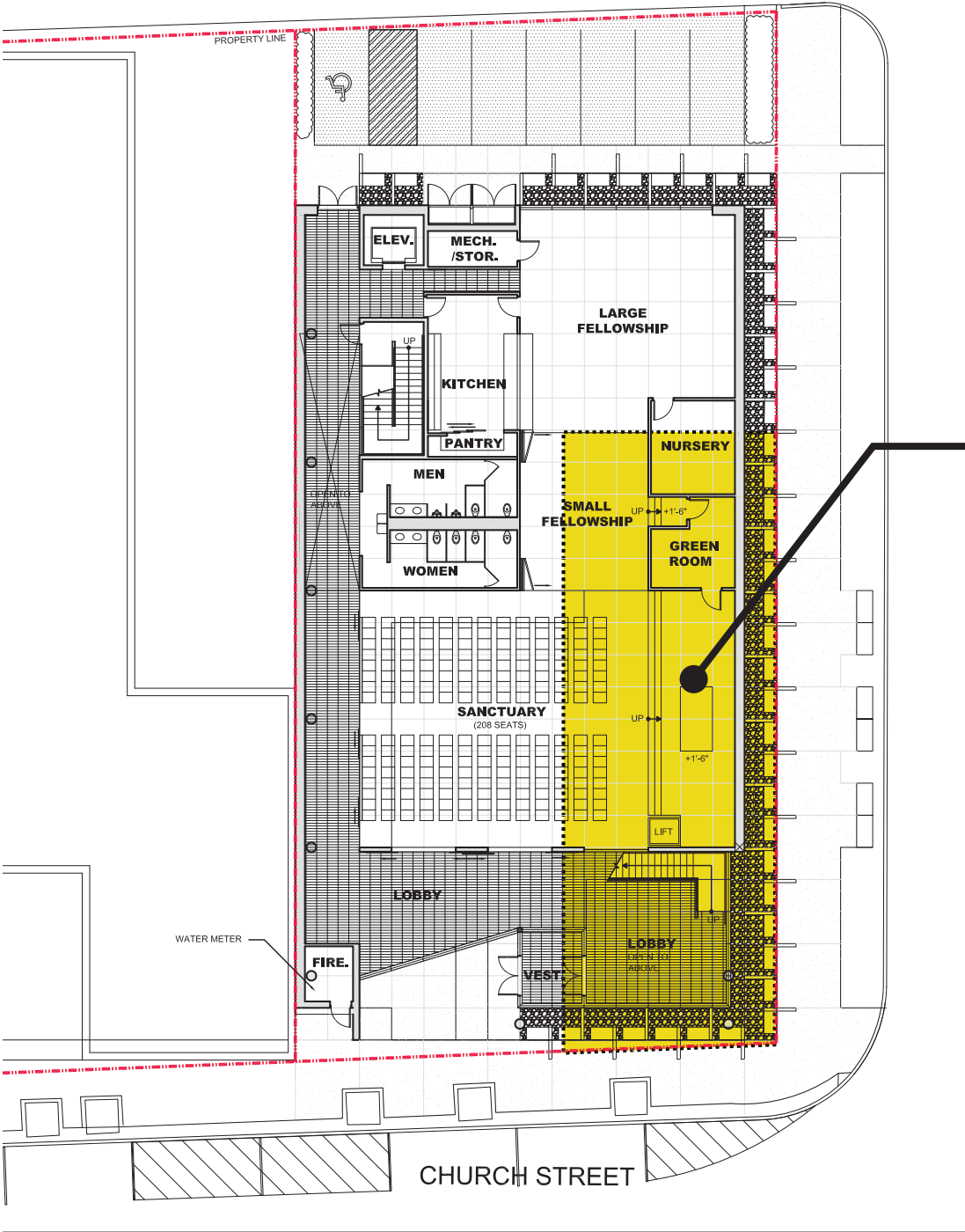
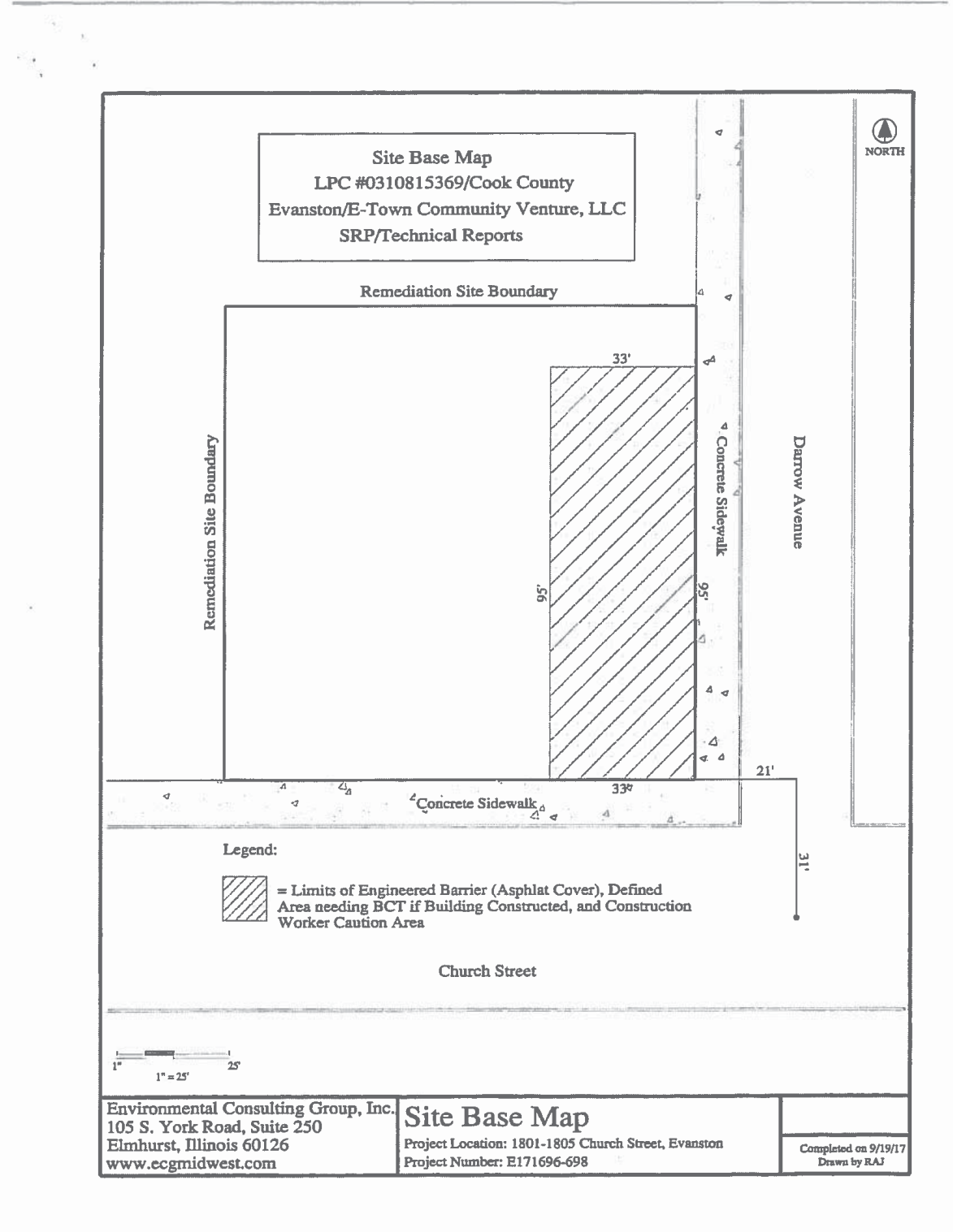


Project Number: 19001
Issue Date: 12.23.2022

A003

MT. PISGAH

EVANSTON, IL



CONTAMINATED SOILS



Project Number: 19001
Issue Date: 12.23.2022

A004

MT. PISGAH

EVANSTON, IL



EXISTING SUNDAY MORNING PARKING



Project Number: 19001
Issue Date: 12.23.2022

A005

MT. PISGAH

EVANSTON, IL



PROPOSED SUNDAY MORNING PARKING



Project Number: 19001
Issue Date: 12.23.2022

A006

SITE DESIGN



EVANSTON, IL

COPYRIGHT © 2022 by Suzuki + Kidd Professional Corporation



A1

SD101

MT. PISGAH

EVANSTON, IL

SUZUKI+KIDD

ARCHITECTS - DESIGNERS - URBANISTS

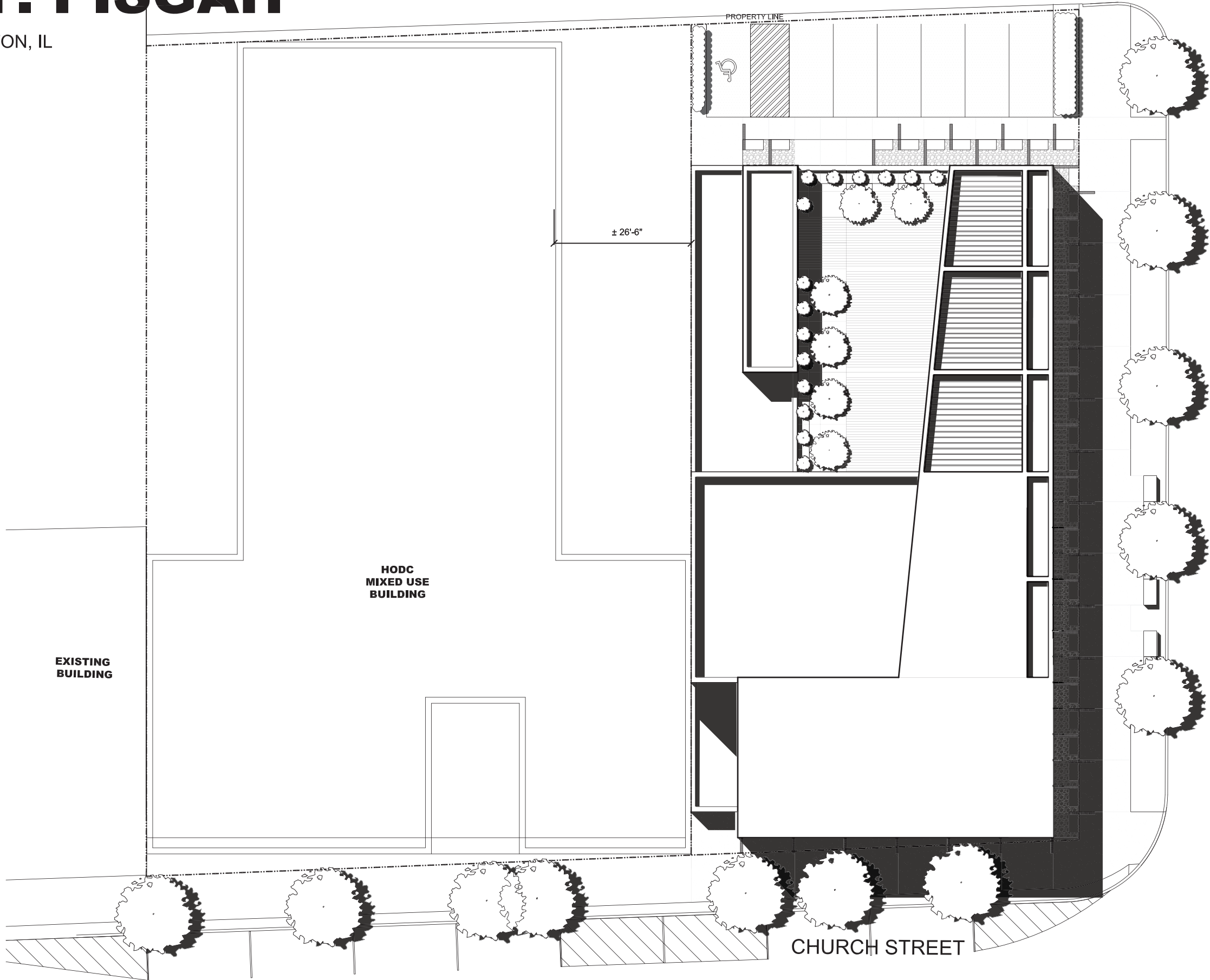
arch@suzukikidd.com

224.245.8142

suzukikidd.com

Professional Design Firm # 184.008075-0001001

COPYRIGHT © 2022 by Suzuki + Kidd Professional Corporation



A1

SITE ROOF PLAN - CONCEPT

SCALE: 1:20

N

Project Number: 19001

Issue Date: 12.23.2022

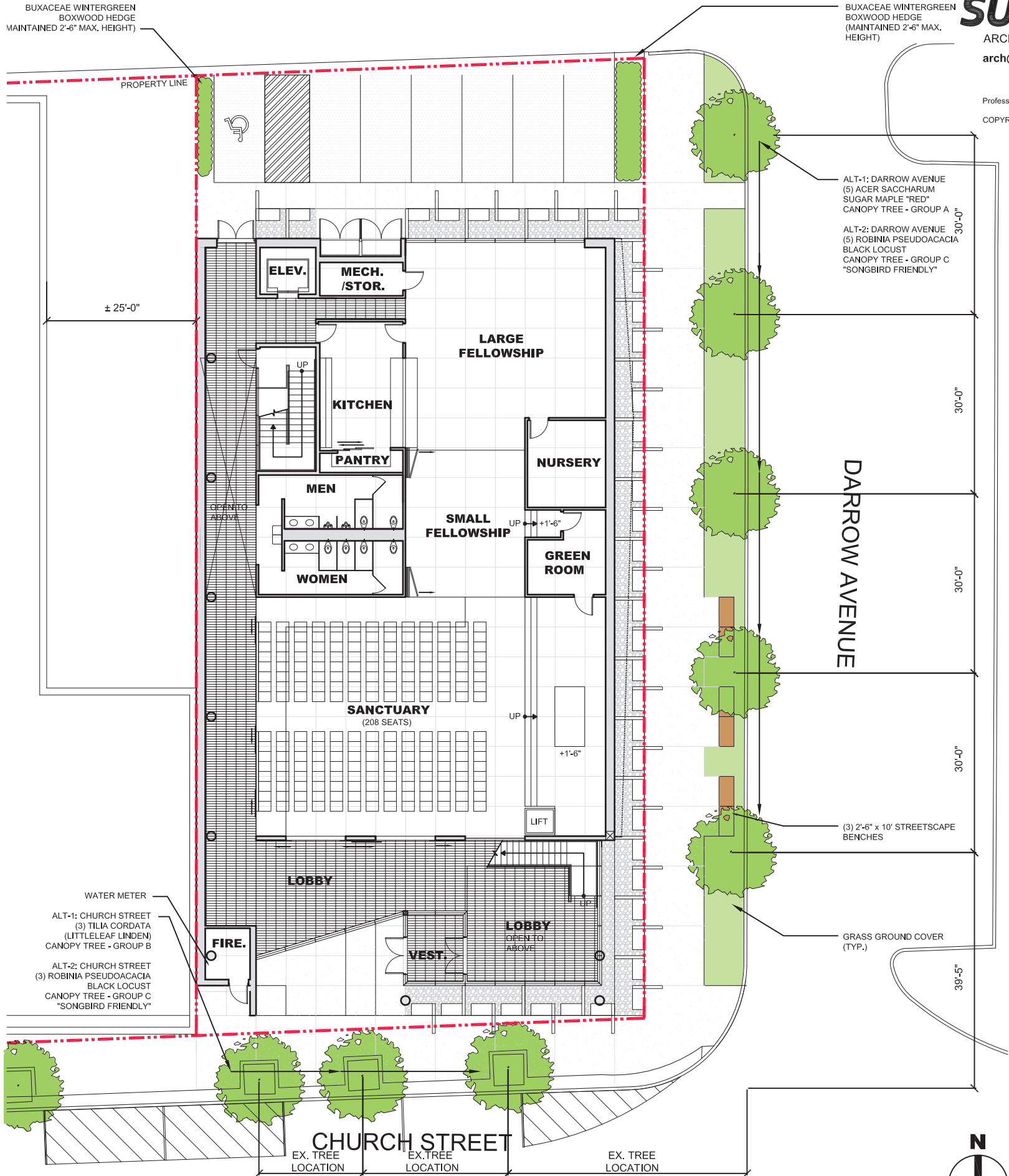
SD102

MT. PISGAH

EVANSTON, IL

SUZUKI+KIDD
ARCHITECTS - DESIGNERS - URBANISTS
arch@suzukikidd.com | 224.245.8142
suzukikidd.com

Professional Design Firm # 184.008075-0001001
COPYRIGHT © 2022 by Suzuki + Kidd Professional Corporation



A1 SITE LANDSCAPE PLAN - CONCEPT
SCALE: 1:20

Project Number: 19001
Issue Date: 12.23.2022

SD103



ACER SACCHARUM
GREEN MOUNTAIN

SUGAR MAPLE “RED”
CANOPY TREE - GROUP A
MATURE HEIGHT: 60 FT.
MATURE SPREAD: 45 FT.

QUANTITY - 6

ALT-1 : DARROW AVENUE



TILIA CORDATA

LITTLELEAF LINDEN
CANOPY TREE - GROUP B
MATURE HEIGHT: 60 FT.
MATURE SPREAD: 40 FT.

QUANTITY - 3

ALT-1 : CHURCH STREET



BUXUS SINICA VAR. INSULARIS

WINTERGREEN BOXWOOD HEDGE
HEIGHT: 2’-6” MAINTAINED MAX. HEIGHT
SPREAD: 3-5 FT.



RONINIA PSEUDOACACIA

BLACK LOCUST
CANOPY TREE - GROUP C
MATURE HEIGHT: 40-80 FT.
MATURE SPREAD: 20-30 FT.

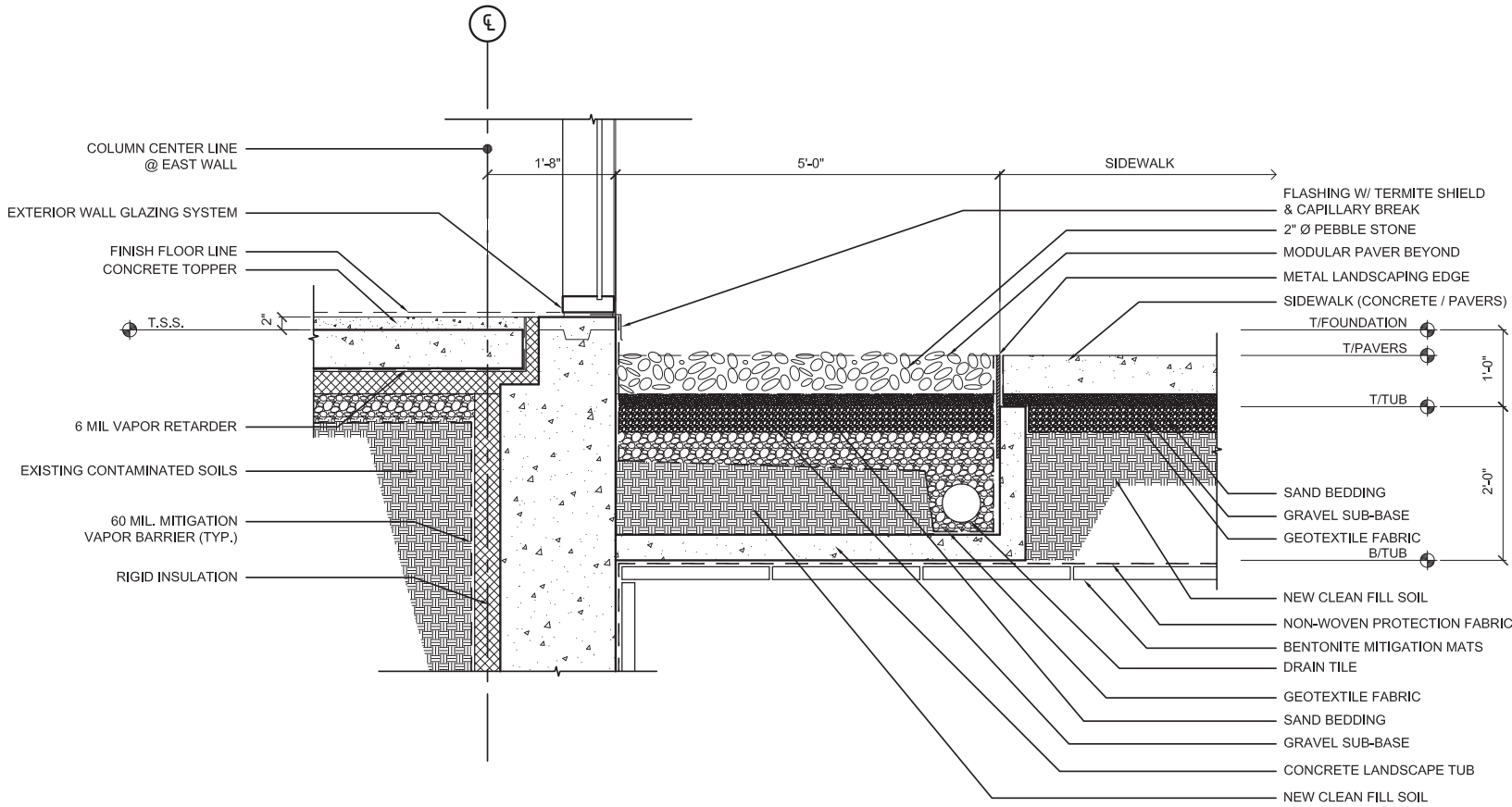
QUANTITY - 9

ALT-2 : CHURCH STREET &
DARROW AVENUE

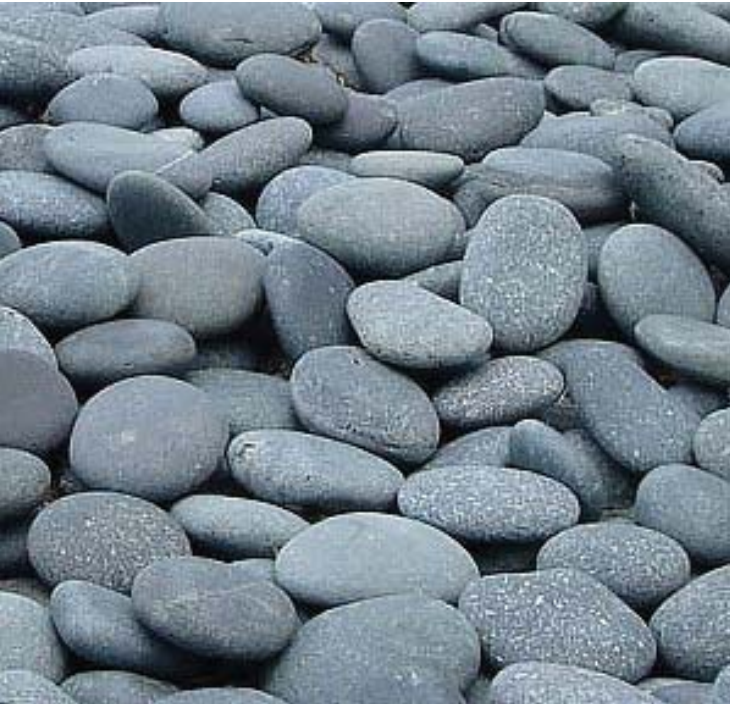
LANDSCAPE ELEMENTS

MT. PISGAH

EVANSTON, IL



EAST LANDSCAPE/ FOUNDATION WALL/ MITIGATION DETAIL
SCALE: 1/2" = 1'-0"



BLACK MEXICAN BEACH PEBBLES

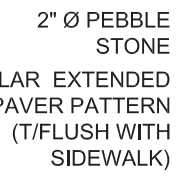
LANDSCAPE ELEMENTS

Project Number: 19001
Issue Date: 12.23.2022

SD105

EVANSTON, IL

COPYRIGHT © 2022 by Suzuki + Kidd Professional Corporation

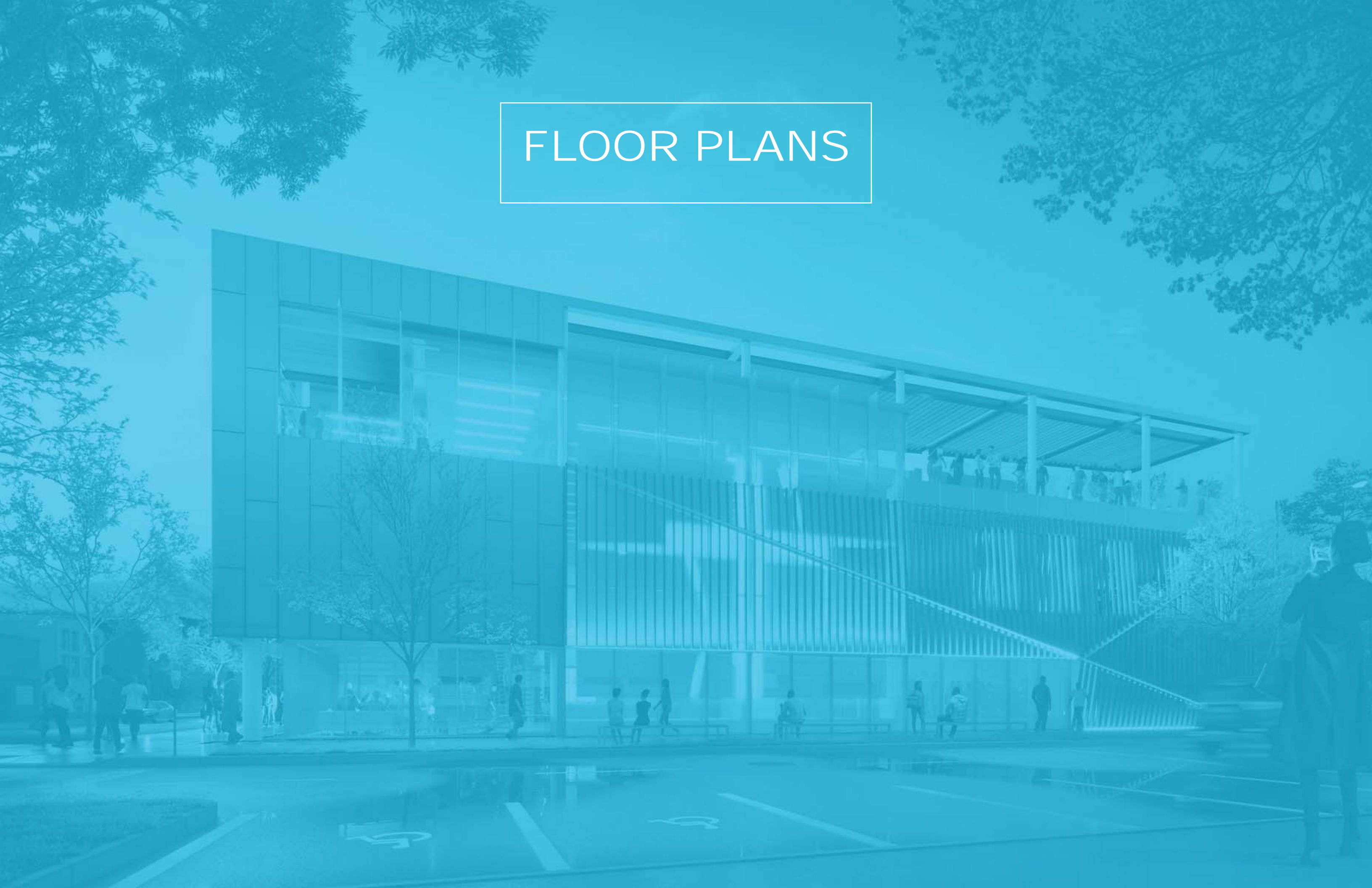


SCALE: 1/4" = 1'-0"



SD106

FLOOR PLANS



EVANSTON, IL

COPYRIGHT © 2022 by Suzuki + Kidd Professional Corporation



A101

SCALE: 1/16" = 1'-0"

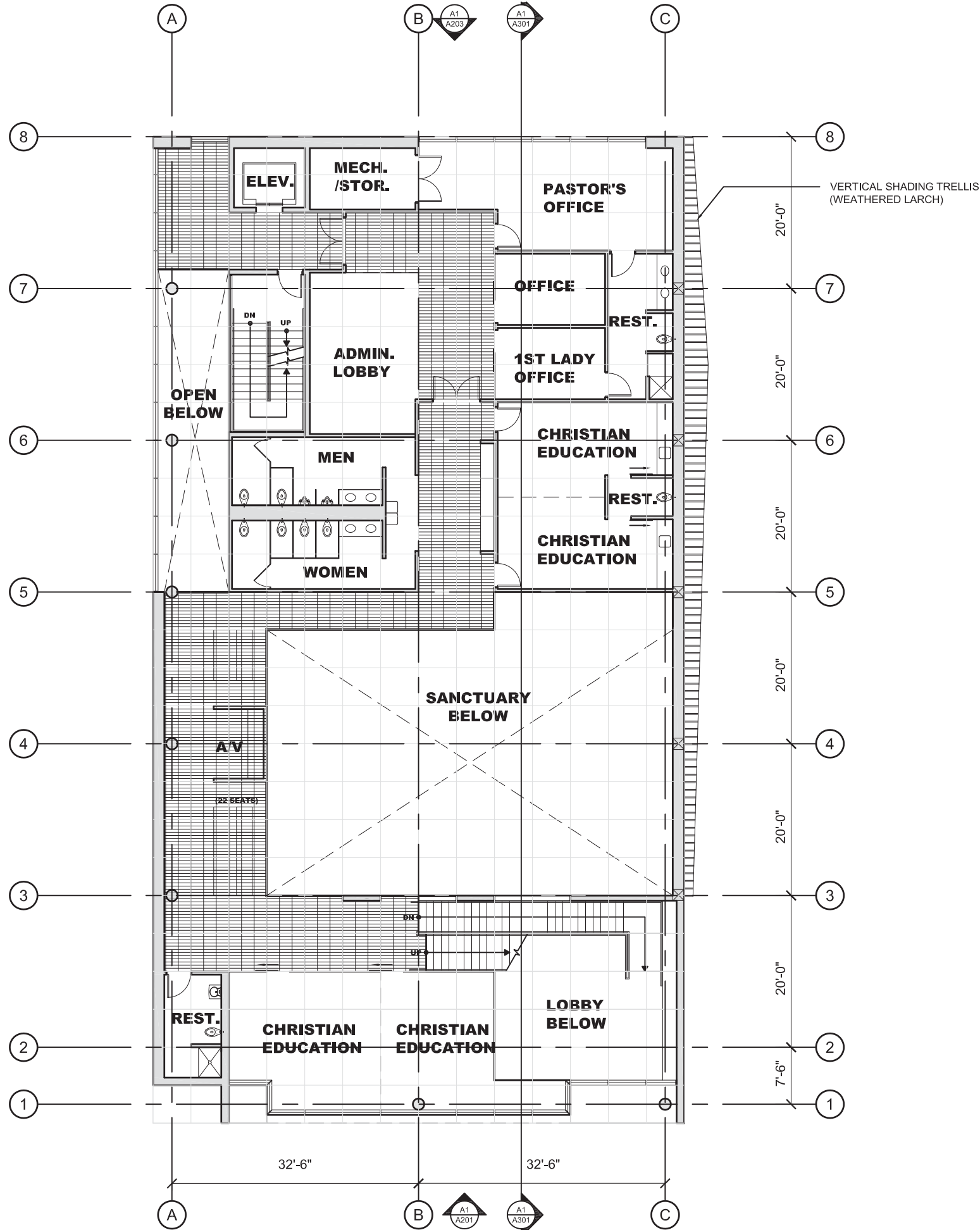
MT. PISGAH

EVANSTON, IL

SUZUKI+KIDD
ARCHITECTS - DESIGNERS - URBANISTS
arch@suzukikidd.com | 224.245.8142
suzukikidd.com

Professional Design Firm # 184.008075-0001001

COPYRIGHT © 2022 by Suzuki + Kidd Professional Corporation



Project Number: 19001
Issue Date: 12.23.2022

A102

A1

SECOND FLOOR PLAN - CONCEPT

SCALE: 1/16" = 1'-0"

MT. PISGAH

EVANSTON, IL



PERENNIAL GRASS



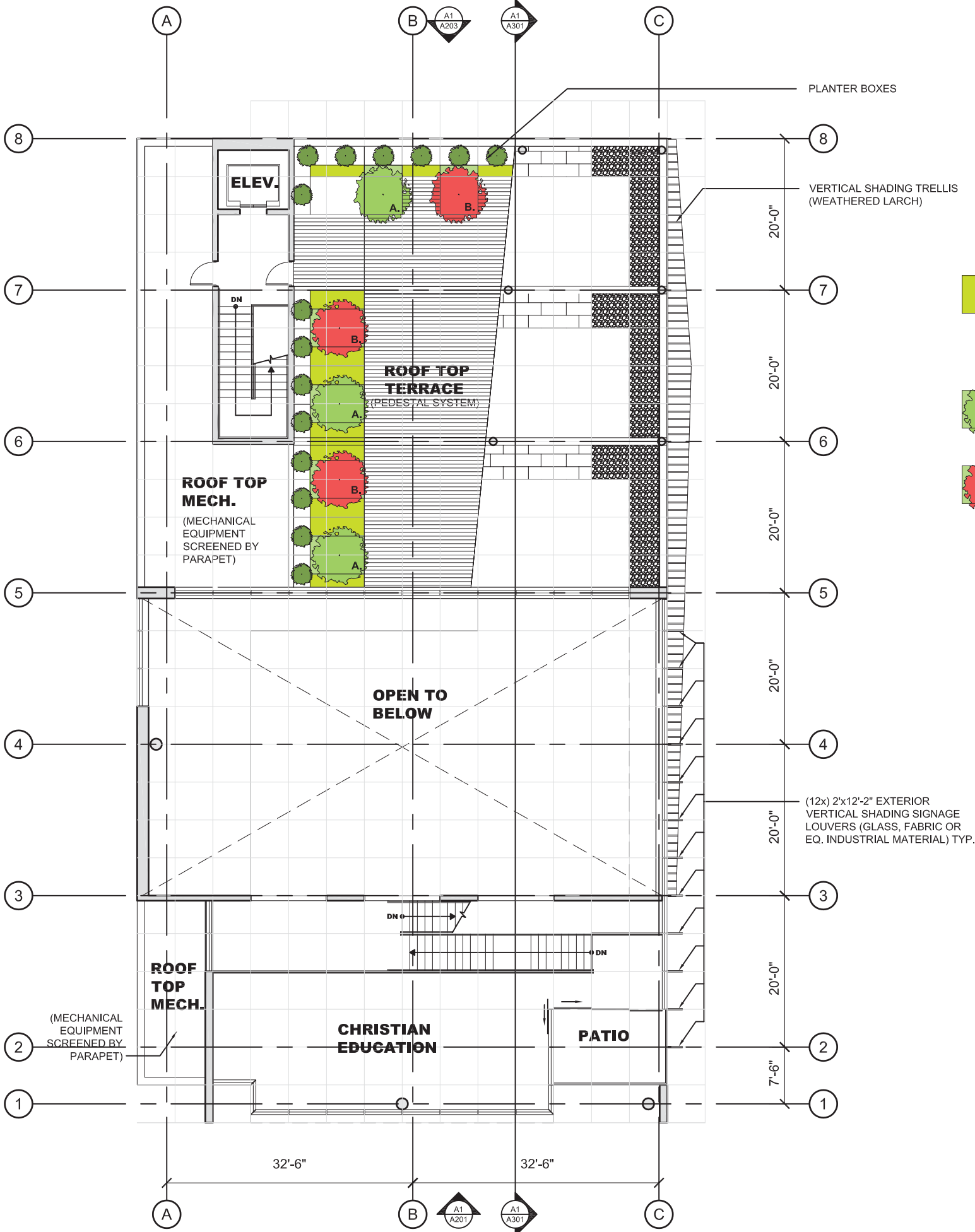
CRATAEGUS MONOGYNA
"DWARF HAWTHORN"



PYRAMIDAL NARROW
WIDTH ARBORVITAE
"HOLMSTRUP"



MALUS SPP.
"CRABAPPLE"



- KEY**
- TALL PERENNIAL GRASS & SEASONAL ANNUAL FLOWERS
 - PYRAMIDAL NARROW WIDTH ARBORVITAE "HOLMSTRUP" QTY. (15)
 - CRATAEGUS MONOGYNA "DWARF HAWTHORN" QTY. (3)
 - MALUS SPP. "CRABAPPLE" QTY. (3)



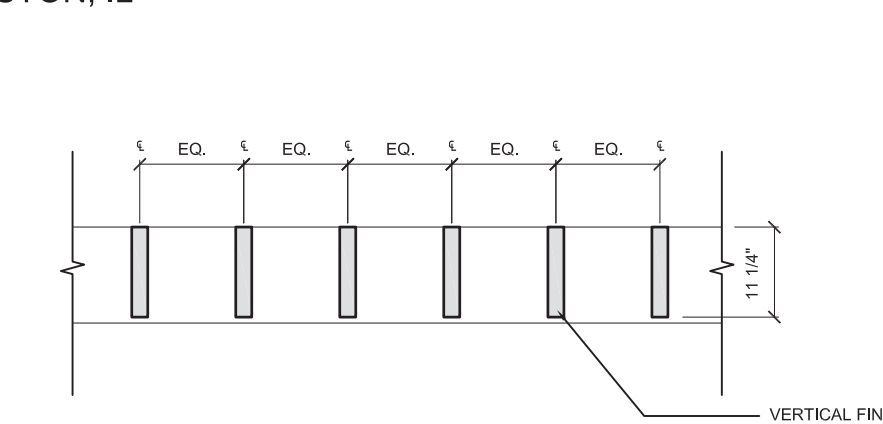
EUONYMUS ALATUS
'COMPACTA'
"BURNING BUSH"

ALT. B

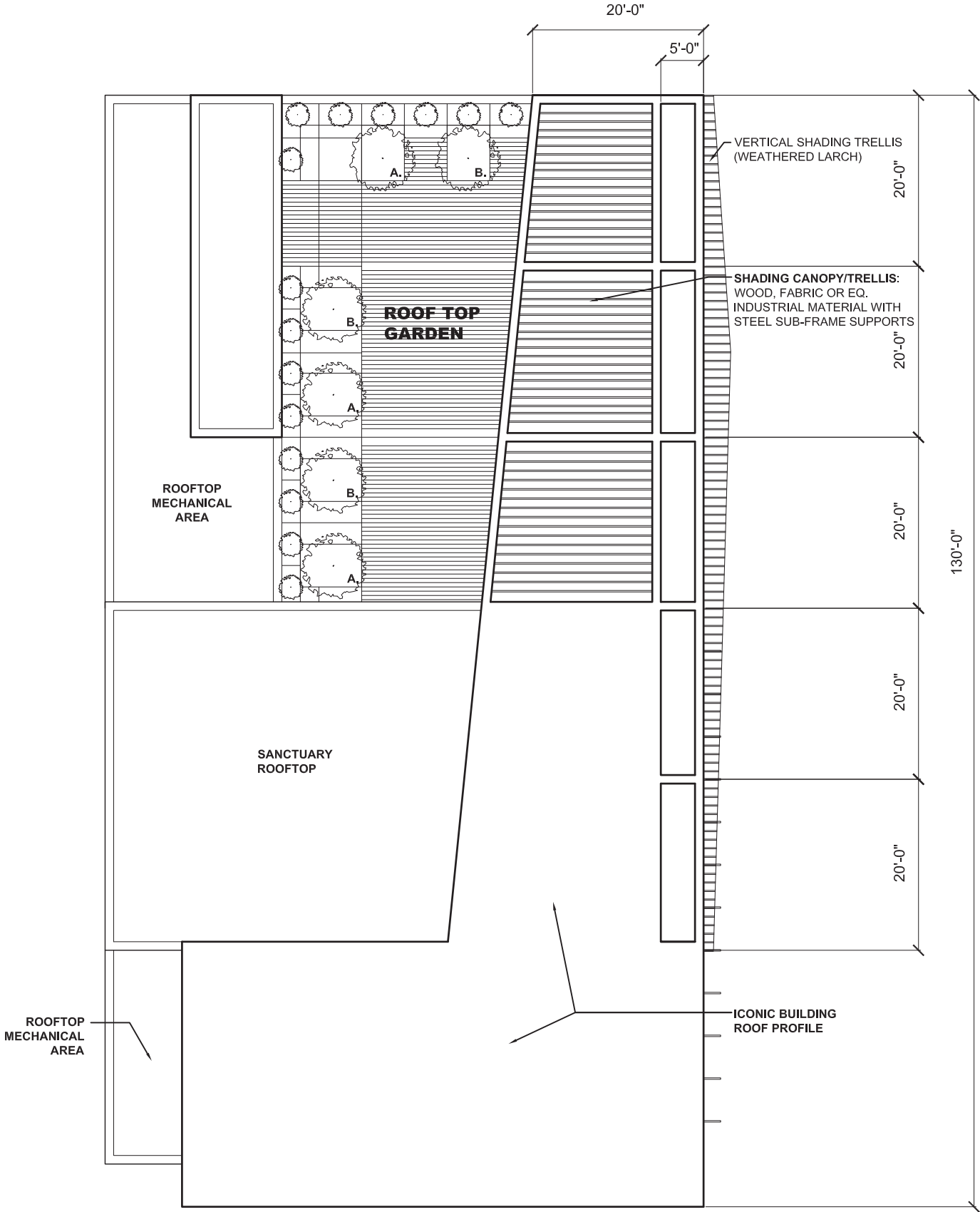


MT. PISGAH

EVANSTON, IL



ROOF CANOPY PROFILE DETAIL
SCALE: 1/2" = 1'-0"



A1 **ROOF PLAN - CONCEPT**
SCALE: 1/16" = 1'-0"

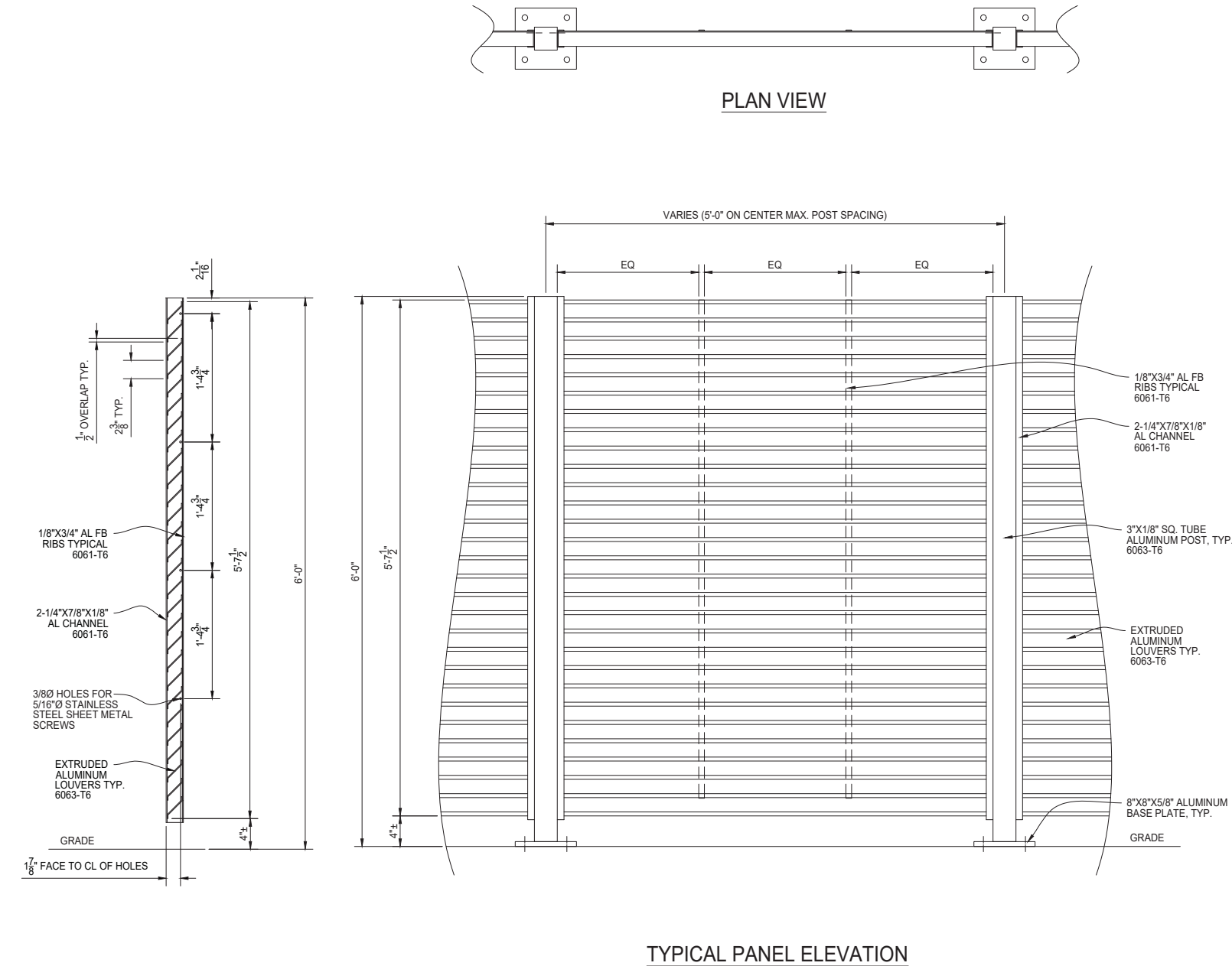


Project Number: 19001
Issue Date: 12.23.2022

A104

MT. PISGAH

EVANSTON, IL



ROOFTOP MECHANICAL EQUIPMENT SCREEN

Project Number: 19001
Issue Date: 12.23.2022

A105

ELEVATIONS/ SECTIONS



MT. PISGAH

EVANSTON, IL

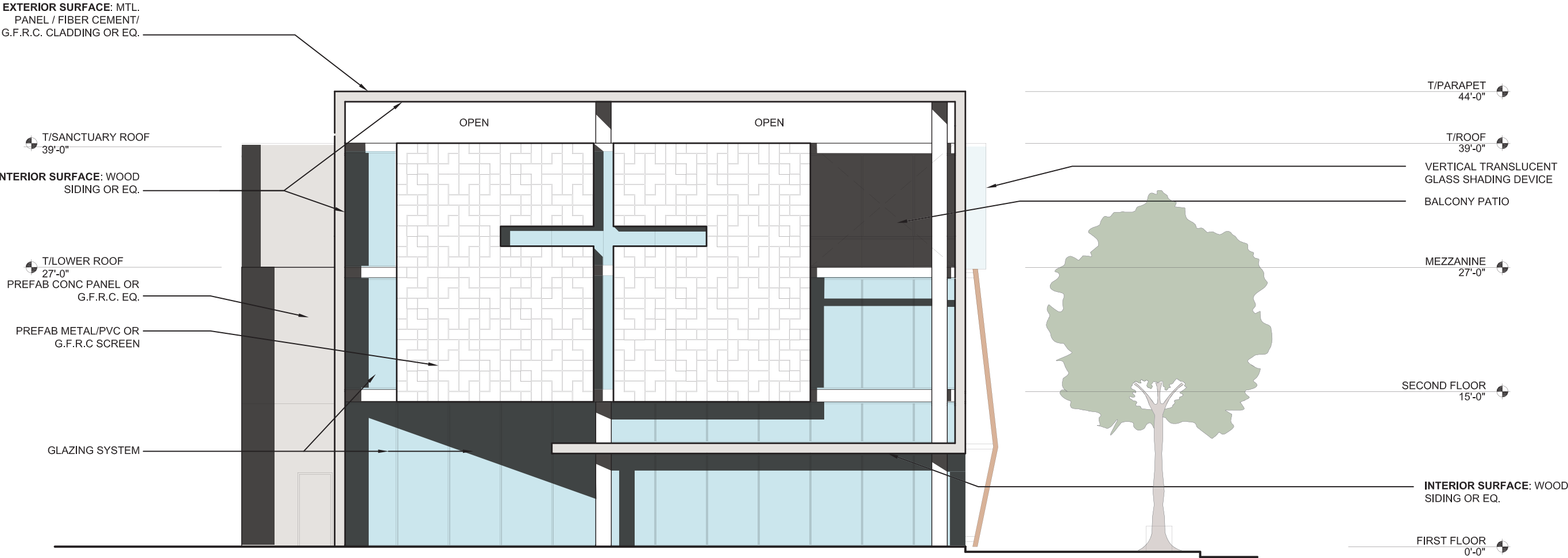
SUZUKI+KIDD

ARCHITECTS - DESIGNERS - URBANISTS

arch@suzukikidd.com | 224.245.8142
suzukikidd.com

Professional Design Firm # 184.008075-0001001

COPYRIGHT © 2022 by Suzuki + Kidd Professional Corporation



A1

SOUTH ELEVATION - CONCEPT

SCALE: 3/32" = 1'-0"

Project Number: 19001
Issue Date: 12.23.2022

A201

MT. PISGAH

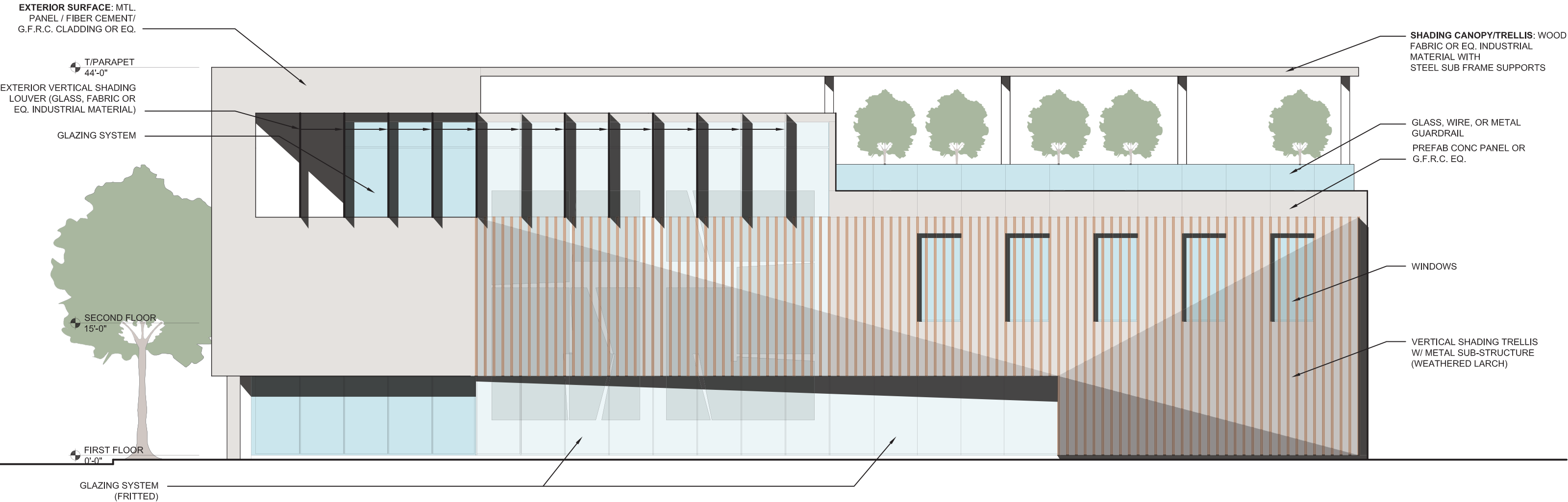
EVANSTON, IL

SUZUKI+KIDD

ARCHITECTS - DESIGNERS - URBANISTS

arch@suzukikidd.com | 224.245.8142
suzukikidd.com

Professional Design Firm # 184.008075-0001001
COPYRIGHT © 2022 by Suzuki + Kidd Professional Corporation



A1

EAST ELEVATION - CONCEPT

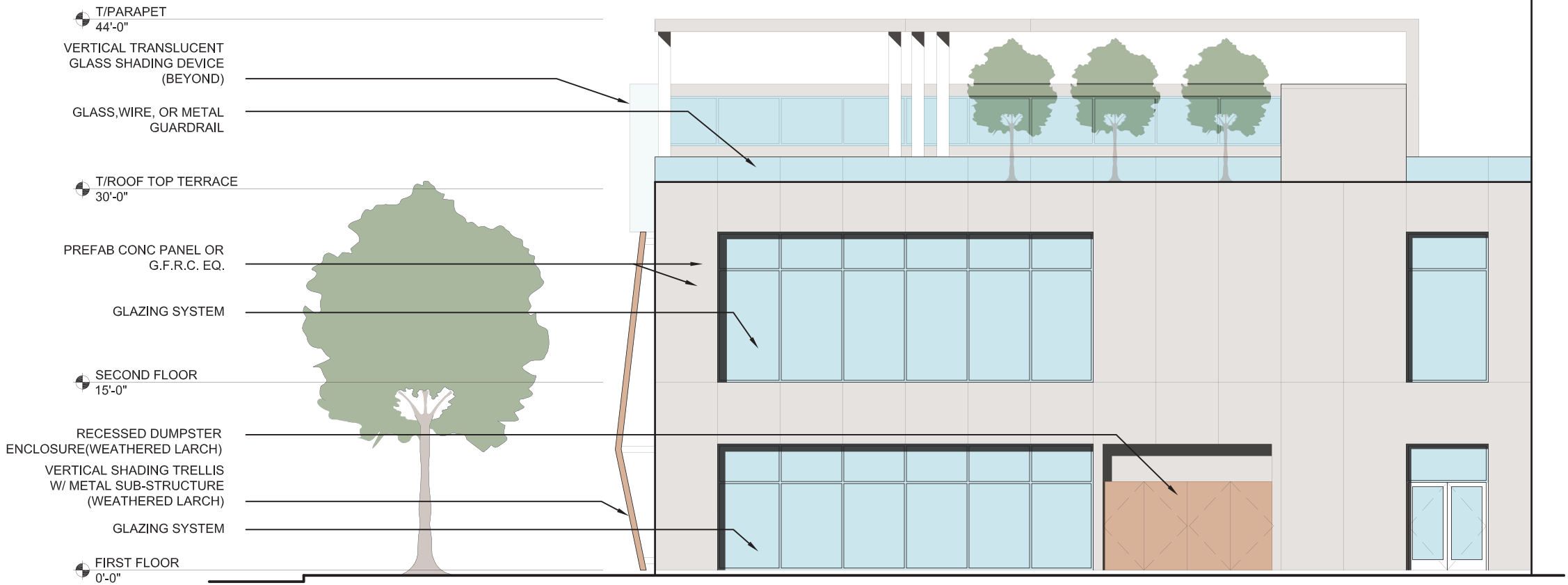
SCALE: 3/32" = 1'-0"

Project Number: 19001
Issue Date: 12.23.2022

A202

MT. PISGAH

EVANSTON, IL



A1

NORTH ELEVATION - CONCEPT

SCALE: 3/32" = 1'-0"

Project Number: 19001
Issue Date: 12.23.2022

A203

MT. PISGAH

EVANSTON, IL

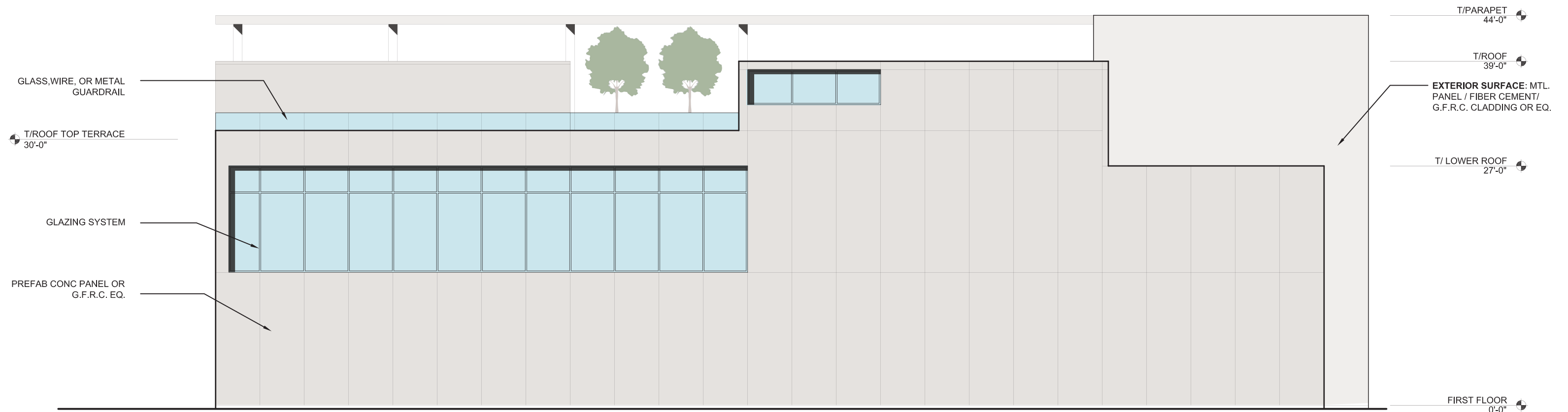
SUZUKI+KIDD

ARCHITECTS - DESIGNERS - URBANISTS

arch@suzukikidd.com | 224.245.8142
suzukikidd.com

Professional Design Firm # 184.008075-0001001

COPYRIGHT © 2022 by Suzuki + Kidd Professional Corporation



A1

WEST ELEVATION - CONCEPT

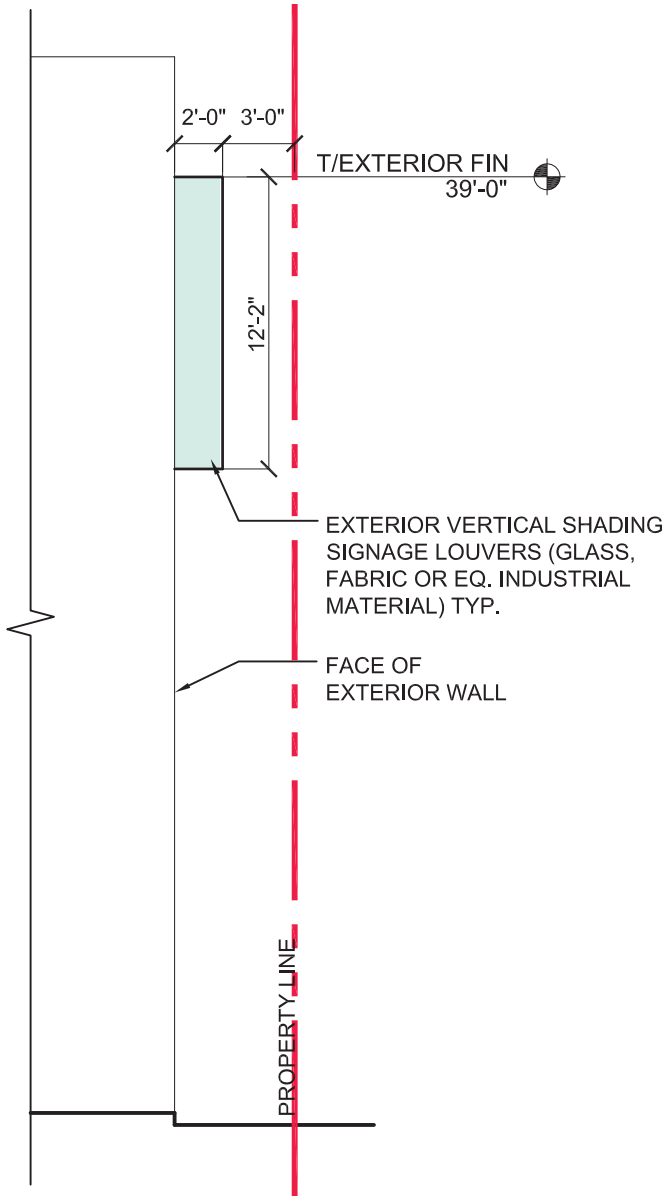
SCALE: 3/32" = 1'-0"

Project Number: 19001
Issue Date: 12.23.2022

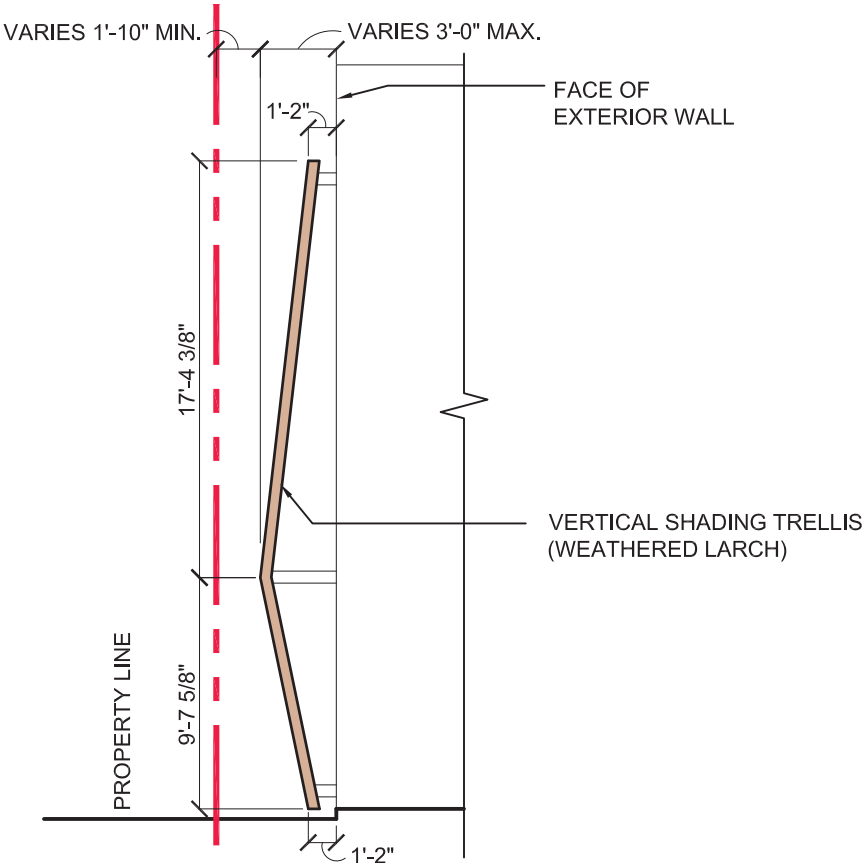
A204

MT. PISGAH

EVANSTON, IL



EXTERIOR FIN PROFILE DETAIL
SCALE: 1/8" = 1'-0"



EXTERIOR TRELLIS PROFILE DETAIL
SCALE: 1/8" = 1'-0"

MT. PISGAH

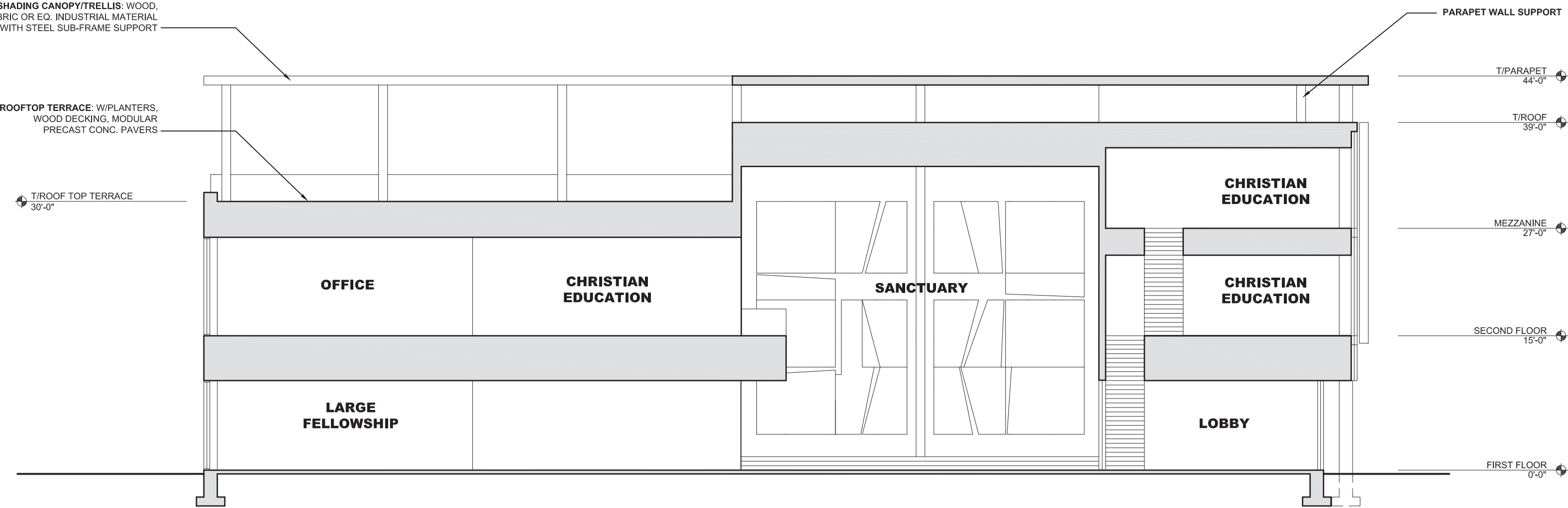
EVANSTON, IL

SUZUKI+KIDD

ARCHITECTS - DESIGNERS - URBANISTS

arch@suzukikidd.com | 224.245.8142
suzukikidd.com

Professional Design Firm # 184.008075-0001001
COPYRIGHT © 2022 by Suzuki + Kidd Professional Corporation



A1

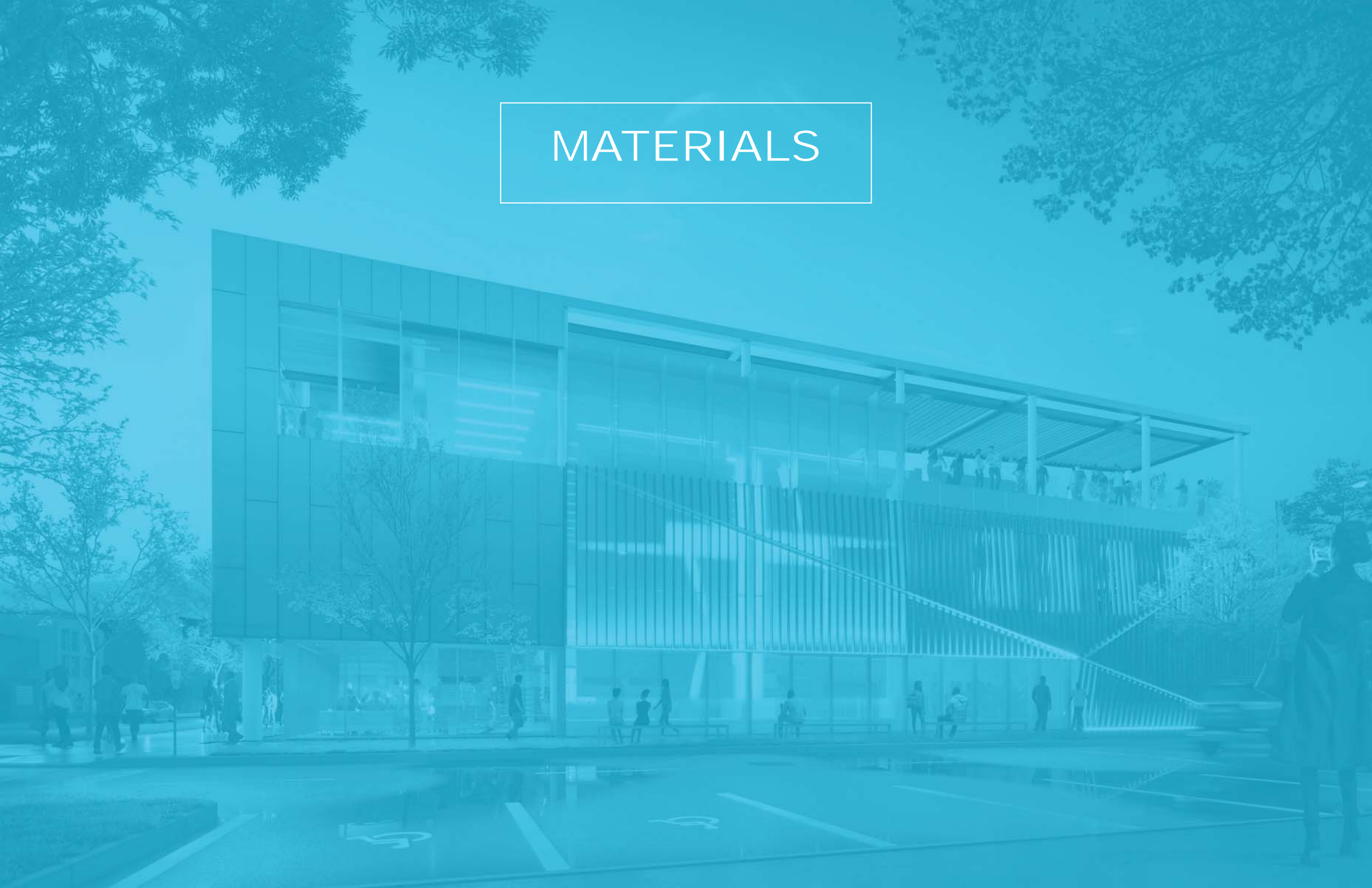
BUILDING SECTION - CONCEPT

SCALE: 3/32" = 1'-0"

Project Number: 19001
Issue Date: 12.23.2022

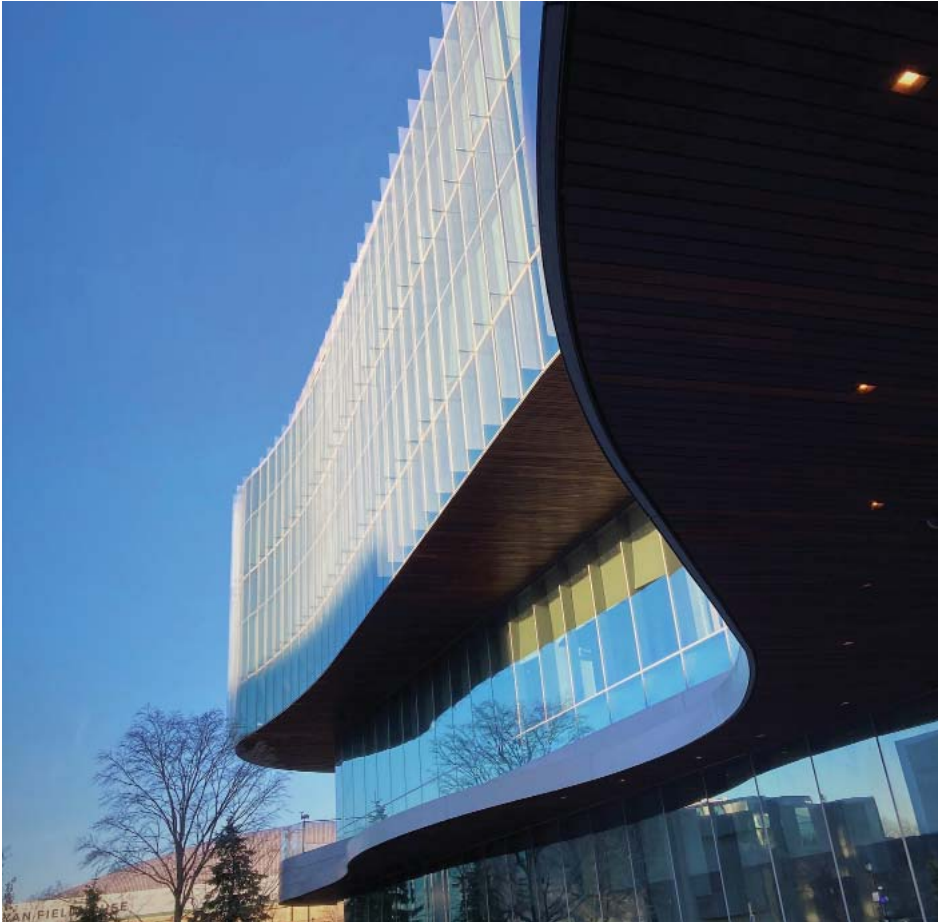
A301

MATERIALS



MT. PISGAH

EVANSTON, IL



Kellogg School of Management: Northwestern University

Vertical Translucent Glass Fins, Shading Device



Segal Visitors Center: Northwestern University

Limestone Panels and Vision Glass



Walter Athletics Center: Northwestern University

Vision Glass Wall with Horizontal Metal / Aluminum Shading Device.
Limestone Panels

MATERIAL PRECEDENTS FROM OUR NEIGHBORHOODS: EVANSTON & WILMETTE

Project Number: 19001
Issue Date: 12.23.2022

A401

MT. PISGAH

EVANSTON, IL



Kellogg School of Management: Northwestern University

Application of Wooden Public Benches, Canopy Tree along the glazing facade and concrete sidewalk



Ryan Fieldhouse & Walter Athletics Center:
Northwestern University:

Vertical Aluminum / Metal Shading Device for the eastern facade



Segal Visitors Center: Northwestern University

Vertical Shading Device, Teflon Coated Acrylic Canvas

MATERIAL PRECEDENTS FROM OUR NEIGHBORHOODS: EVANSTON & WILMETTE

MT. PISGAH

EVANSTON, IL



Gillson Park Beach House: Wilmette, IL

Weathered Larch Wood Trellis Shell over poured in place concrete structure.



Gillson Park Beach House: Wilmette, IL

Weathered Larch Wood Trellis with cascading lights.



Kellogg Shool of Management:
Northwestern University

Application of Wood Panels under Eaves



Youth & Opportunity United / Y.O.U

Application of a Metal Panels

MATERIAL PRECEDENTS FROM OUR NEIGHBORHOODS: EVANSTON & WILMETTE

MT. PISGAH

EVANSTON, IL

SUZUKI+KIDD
ARCHITECTS - DESIGNERS - URBANISTS
arch@suzukikidd.com | 224.245.8142
suzukikidd.com

Professional Design Firm # 184.008075-0001001
COPYRIGHT © 2022 by Suzuki + Kidd Professional Corporation



VERTICAL SHADING SCREEN
WEATHERED LARCH



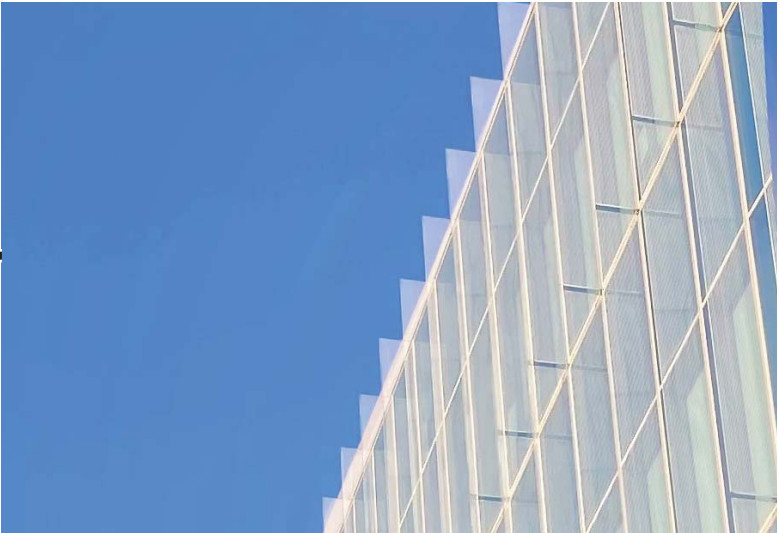
EXTERIOR CLADDING
METAL PANELING, G.F.R.C OR EQ.



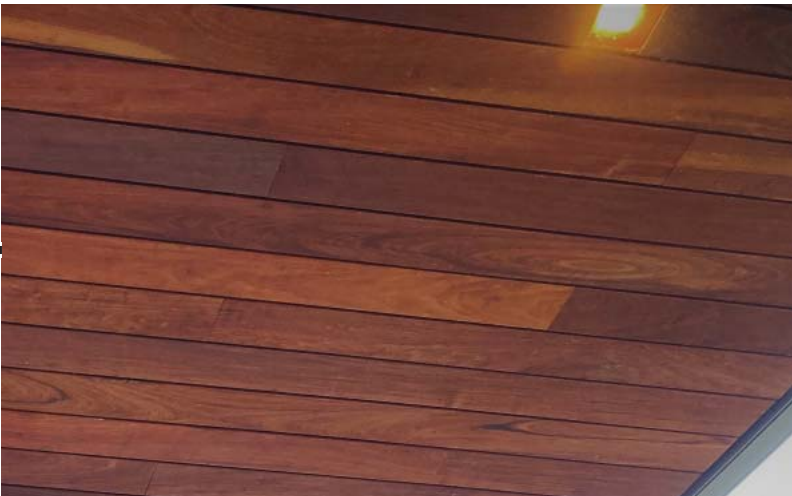
EXTERIOR MATERIALS

Project Number: 19001
Issue Date: 12.23.2022

A404



VERTICAL SHADING FINS
FRITTED GLAZING - TEMPERED LAMINATED



SOFFIT
STAINED CEDAR

EXTERIOR MATERIALS

BIRD FRIENDLY DESIGN



MT. PISGAH

EVANSTON, IL



FRITTED GLAZING

VERTICAL SHADING SCREEN



PORTICO - SHADED GLAZING TO REDUCE REFLECTION

FRITTED GLAZING SCREEN

SHADING SCREEN

BIRD FRIENDLY BUILDING DESIGN STRATEGIES

Project Number: 19001
Issue Date: 12.23.2022

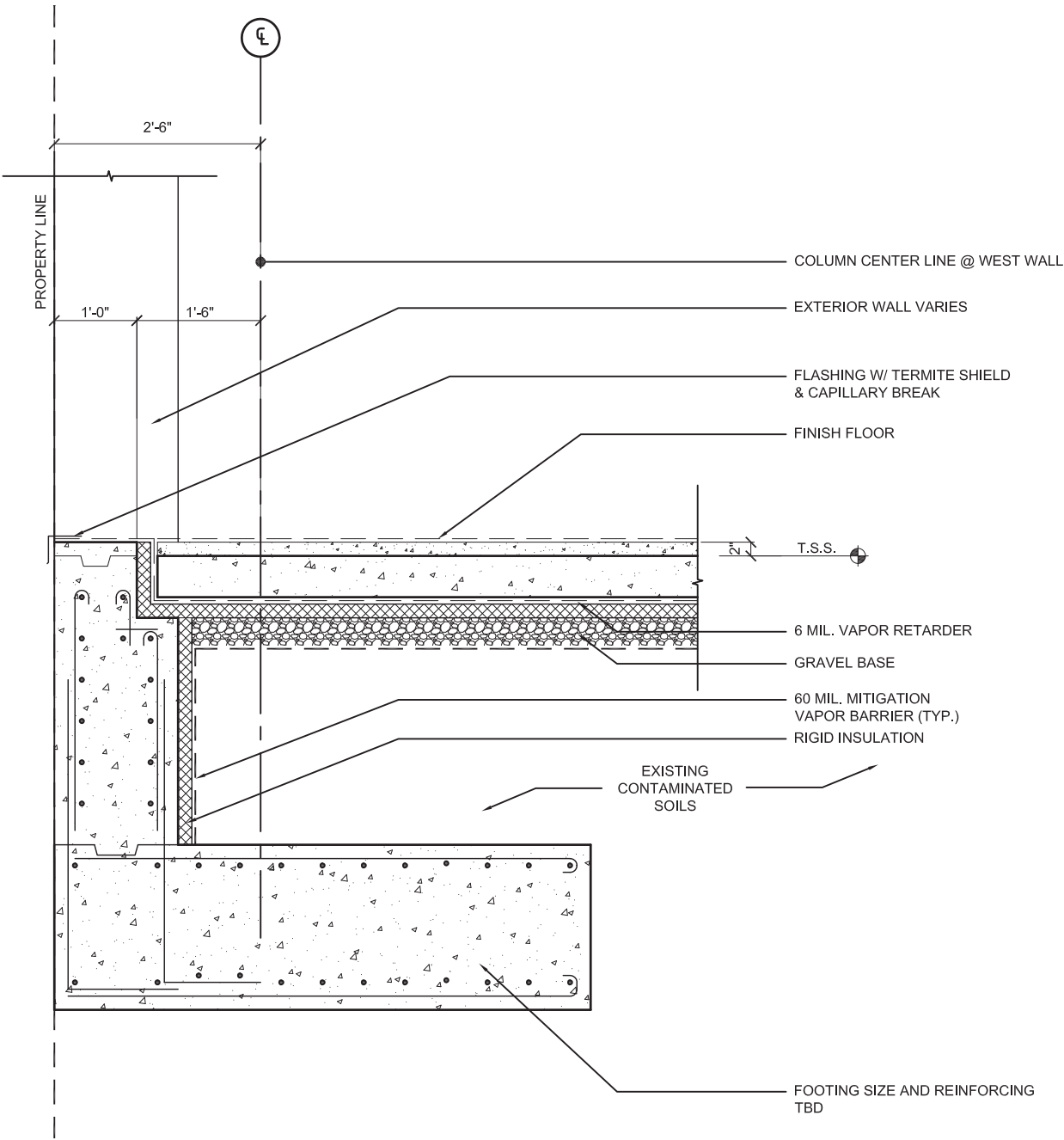
A406

DETAILS



MT. PISGAH

EVANSTON, IL



FOUNDATION DETAIL @ WEST PROPERTY LINE
SCALE: 1/2" = 1'-0"

SITE DATA



MT. PISGAH BUILDING AREA												
	Gross (S.F.)	Hallway/ Elevator/ Stairs / Lobby	Mechanical	Sanctuary	Classrooms	Gathering	Restrooms	Kitchen	Green Room	Offices	Other	Exterior Space
First Floor	8455	2457	112	2340	190	1579	484	351	185		757	
Second Floor	6148	2403	112		1251		585			1174	623	
Mezzanine	971				971							150
Rooftop Terrace	439	439										3254
Total	16013	5299	224	2340	2412	1579	1069	351	185	1174	1380	3404
	GSF Applicable to F.A.R.											
First Floor		8045										
Second Floor		5443										
Mezzanine		971										
Rooftop Terrace		0										
Lot Size		12000										
F.A.R.		1.20										

PERSPECTIVES



MT. PISGAH

EVANSTON, IL

SUZUKI+KIDD
ARCHITECTS - DESIGNERS - URBANISTS
arch@suzukikidd.com | 224.245.8142
suzukikidd.com

Professional Design Firm # 184.008075-0001001
COPYRIGHT © 2022 by Suzuki + Kidd Professional Corporation



EXTERIOR PERSPECTIVE - EVENING VIEW

Project Number: 19001
Issue Date: 12.23.2022

A701

MT. PISGAH

EVANSTON, IL

SUZUKI+KIDD
ARCHITECTS - DESIGNERS - URBANISTS
arch@suzukikidd.com | 224.245.8142
suzukikidd.com

Professional Design Firm # 184.008075-0001001
COPYRIGHT © 2022 by Suzuki + Kidd Professional Corporation



EXTERIOR PERSPECTIVE - DAYLIGHT VIEW

Project Number: 19001
Issue Date: 12.23.2022

A702



INTERIOR PERSPECTIVE

MT. PISGAH

EVANSTON, IL

SUZUKI+KIDD
ARCHITECTS - DESIGNERS - URBANISTS
arch@suzukikidd.com | 224.245.8142
suzukikidd.com

Professional Design Firm # 184.008075-0001001
COPYRIGHT © 2022 by Suzuki + Kidd Professional Corporation



EXTERIOR PERSPECTIVE - EVENING VIEW

Project Number: 19001
Issue Date: 12.23.2022

A704

MT. PISGAH

EVANSTON, IL

SUZUKI+KIDD
ARCHITECTS - DESIGNERS - URBANISTS
arch@suzukikidd.com | 224.245.8142
suzukikidd.com

Professional Design Firm # 184.008075-0001001
COPYRIGHT © 2022 by Suzuki + Kidd Professional Corporation



EXTERIOR PERSPECTIVE - EVENING VIEW

Project Number: 19001
Issue Date: 12.23.2022

A705

MOUNT PISGAH

1805 Church St, Evanston, IL 60201

