



EVANSTON SKATE PARK

PUBLIC MEETING #5

May 17, 2022 | Zoom Webinar | 6pm

AGENDA

- 1. Introductions:** *Evanston Staff, Consultant Team + Advisory Group*
- 2. Project Introduction:** *Project History, Goals + Timeline*
- 3. Community Outreach:** *Recap from Public Meeting #4*
- 4. Final Concept Plan Presentation**
- 5. Next Steps and Q+A**



INTRODUCTIONS

CITY OF EVANSTON TEAM



Stefanie Levine, PLA *Senior Project Manager, City of Evanston*

Lara Biggs, PE *Capital Planning Bureau Chief/ City Engineer, City of Evanston*

Audrey Thompson *Director of Parks and Recreation*

CONSULTANT TEAM



Jodi Mariano, PLA
Principal +
Project Manager



Heather Favre, PLA
Senior Associate
Landscape Architect



Vince Onel
Skate Park Designer



Adam Eichorn
Skate Park Designer



Martin Michalowicz,
PE
Civil Engineer

INTRODUCTIONS

ADVISORY GROUP

Karim Alhamwi

Juan Geracaris

Pamela Rice Bailey

Patrick Hageman

Luca Berley

Quentin Herzig

Judah Bernstein

Aaron Kaplan

John Bryan

Nathan Kipnis

Heather Bublick

Ross Monzo

Councilmember Burns

Eric Pitt

Dan Dupuis

Joseph Sargentt

Nyles Eason

Matthew Snow

Yasmin Fatah

Gabe Weiss

Alex Felts

Jake Wiens

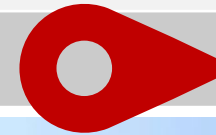


PROJECT INTRODUCTION

COMPLETED ACTIVITIES	2021	January	City Council Meeting (01/19/21)
		March	Public Meeting #1 (03/17/21) Public Survey (1,056 responses)
		May	Public Meeting #2 (05/25/21) <i>Site selection at Twiggs Park finalized</i>
		August	Application for OSLAD grant funding
		October	Consultant Team Selected for Design
CURRENT + UPCOMING ACTIVITIES	2022	January – February	Public Engagement + (3) Initial Concepts
		March – April	Public Engagement + (2) Refined Concepts
		April – May	Public Engagement + (1) Final Concept
		May – September	Construction Document Preparation
		September (2022) – February (2023)	Bidding + Negotiations
	2023	March – November	Anticipated Construction Period
	2024	September	Warranty Review

PROJECT INTRODUCTION | MEETING SCHEDULE

CONCEPT PHASE	2022 ADVISORY MEETINGS	2022 PUBLIC MEETINGS
INITIAL CONCEPTS	01/11/2022	
	02/01/2022	
		02/22/2022
REFINED CONCEPTS	03/15/2022	
		04/05/2022
FINAL CONCEPT	04/26/2022	
		05/17/2022

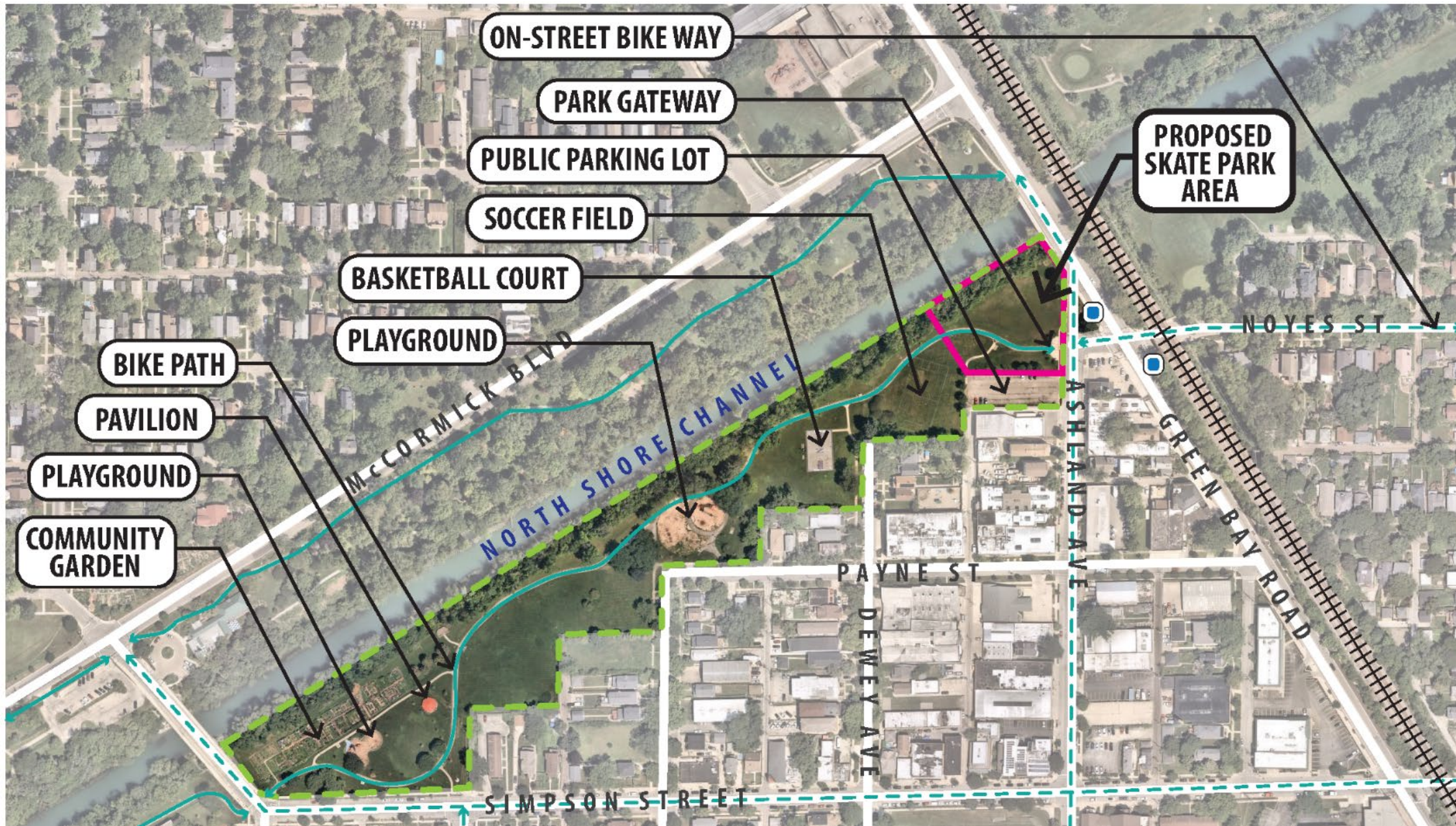


PROJECT INTRODUCTION | GOALS

- 1. Construct an in-ground, custom concrete skate park at the eastern end of Twiggs Park.**
- 2. Accommodate additional park features as determined through the engagement process.** *(Such as a shade structure, site furnishings, lighting, portable toilets, drinking fountain, drainage system, pathways, signage, and landscaping).*
- 3. Modify existing park features as required to accommodate the skate park design.**
- 4. Address the adjacent eroded and unstable embankment to the North Shore Channel.**
- 5. Plan for a future restroom facility.**

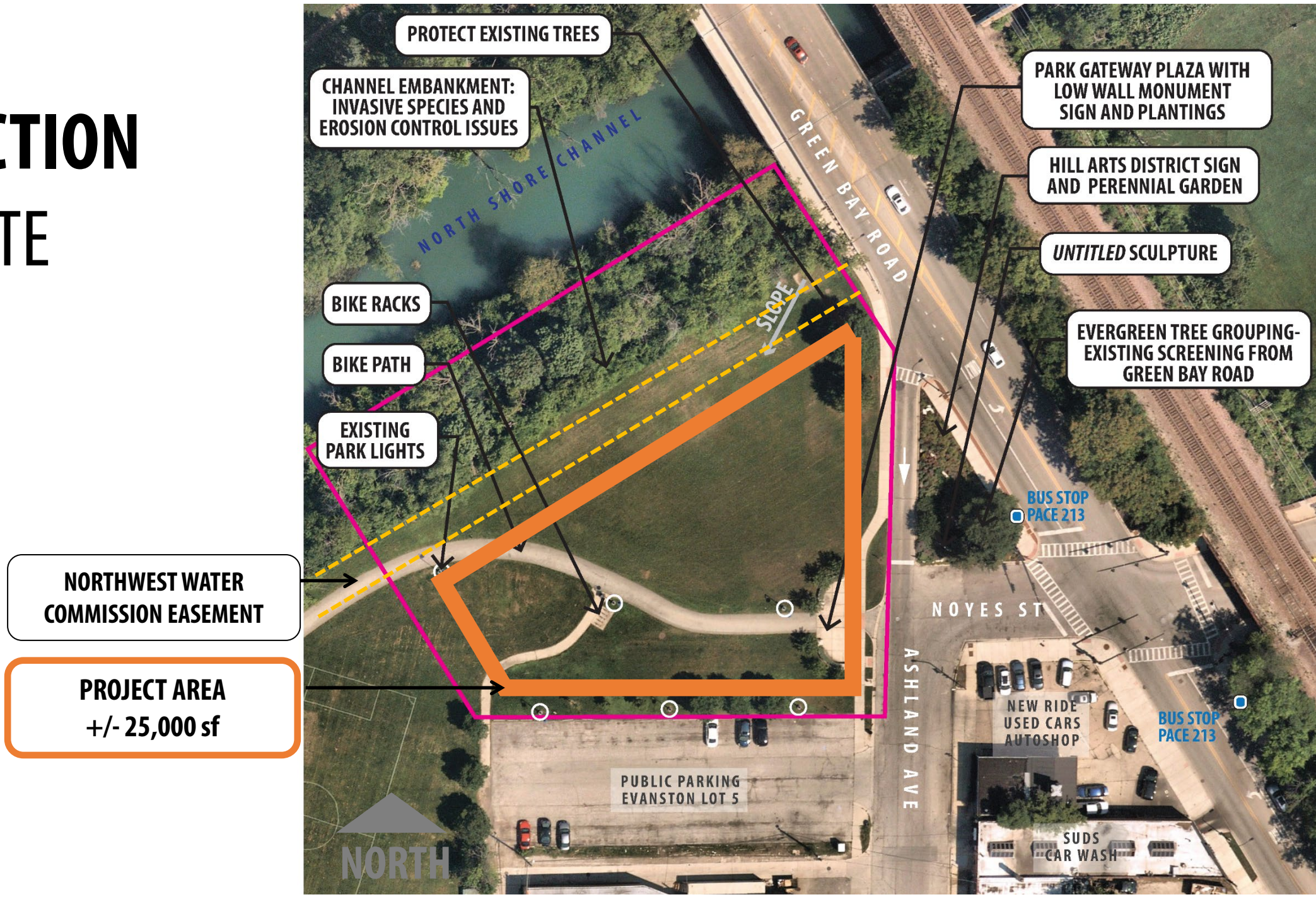
WILLIAM H. TWIGGS PARK

PROJECT INTRODUCTION | PROJECT SITE



PROJECT INTRODUCTION

PROJECT SITE



PUBLIC MEETING #4 | KEY TAKEAWAYS

Please select your preferred BOWL CONCEPT

Mentimeter

16



C1: closed bowl
with shallow
bonus area at
north

4



C2: open bowl
with shallow bowl
at south

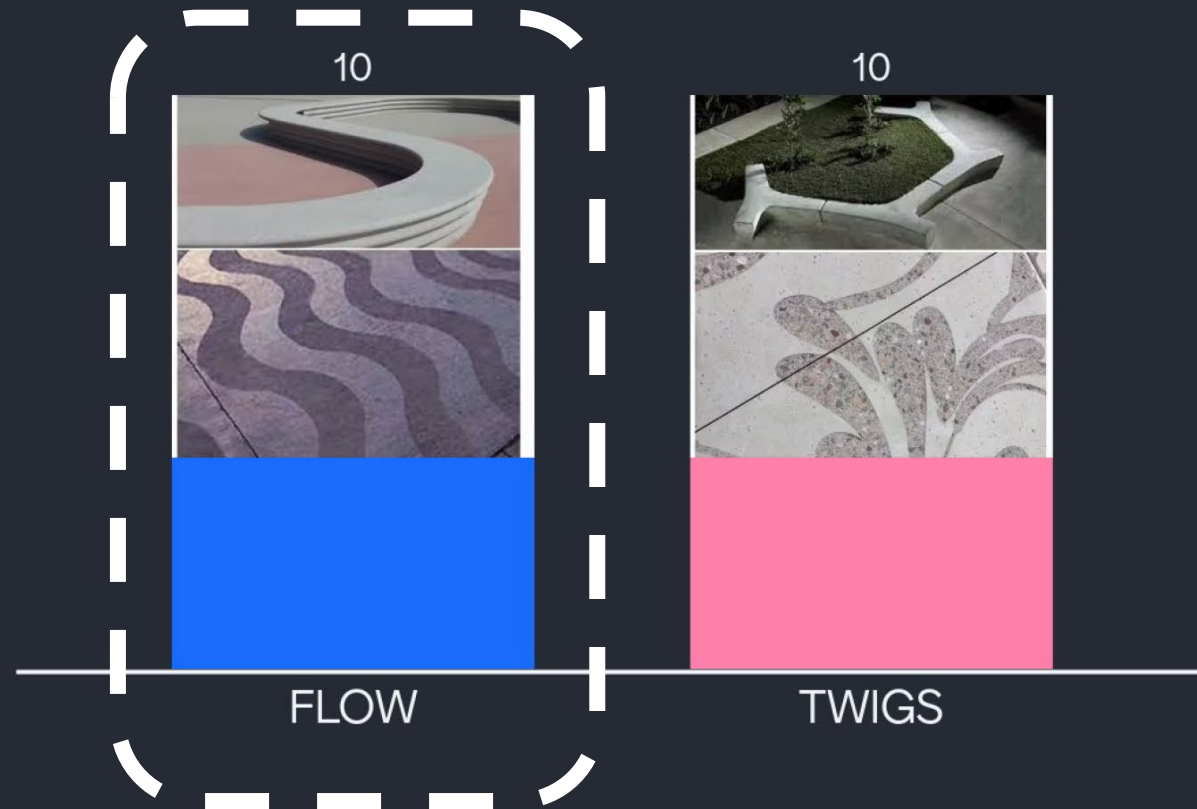
20



PUBLIC MEETING #4 | KEY TAKEAWAYS

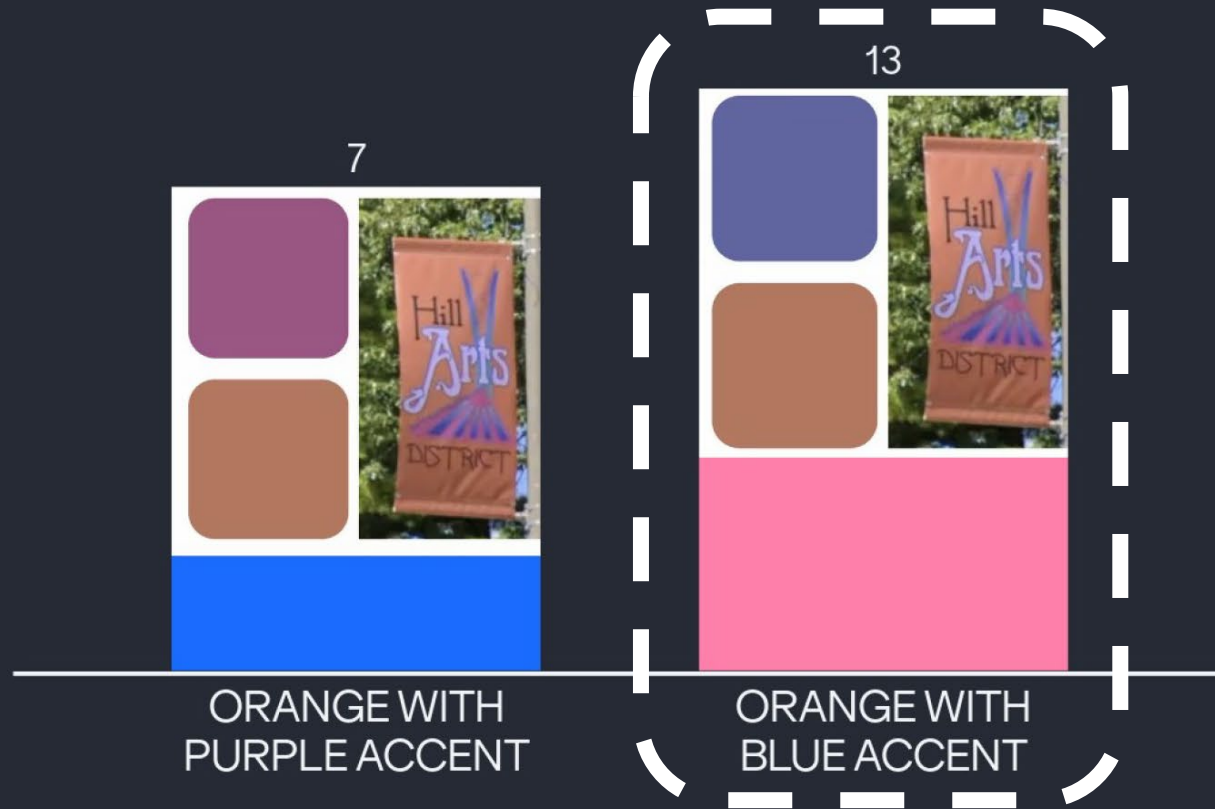
Mentimeter

Please select your preference for IDENTITY FEATURES



PUBLIC MEETING #4 | KEY TAKEAWAYS

Please select your preference for the COLOR PALETTE



PUBLIC MEETING #4 | KEY TAKEAWAYS

1. *Hours of Skate Park operation and lighting:*

What times of day will the skate park be open and what light levels are anticipated?

EVANSTON SKATE PARK

PARK HOURS	Hours: 8:00am – 9:00pm
LIGHTING	Security lighting: 0.5 fc



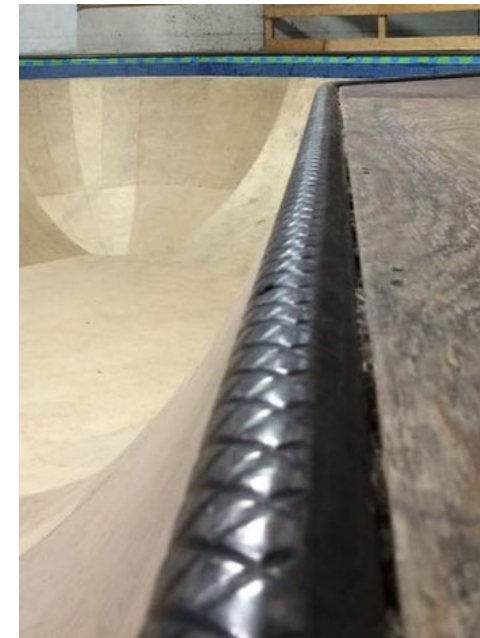
Security lighting - Twiggs Park

PUBLIC MEETING #4 | KEY TAKEAWAYS

- 1. Sidewalk along Green Bay Road:** Widen the existing sidewalk to better accommodate park users and people traveling between the park site and Ladd Arboretum.
- 2. Cultural identity features:** In addition to recognizing William H Twigg, consider recognizing the local pioneering skater Carl McCall / teammates on the Tom Thumb Skateboard Team.
- 3. Carbon cure concrete:** Can this be considered for the skate park?
- 4. Skate Park Features:**
 - **Bowl features:** No roll in features; consider including a hip in the bowl.
 - **Stair features:** reduce the length of the stairs
 - **Manny Pad:** consider a more traditional grind edge instead of a slappy curb.
 - **Sculptural concrete feature at the north:** consider replacing with a hubba or wallride.
 - **Additional features requested:** Wallride like Chase Plaza; more half-pipes for beginners.

FINAL CONCEPT PRESENTATION | ELEMENTS + FEATURES

Bowls, Banks + Copings



MEDIUM + SHALLOW BOWLS PREFERRED

- **Steel copings**
- **Variety within the bowl**

FINAL CONCEPT PRESENTATION | ELEMENTS + FEATURES

Ledges + Rails



LEDGES

- Low and wide
- Grind ledge
- Manual 'Manny' Pad

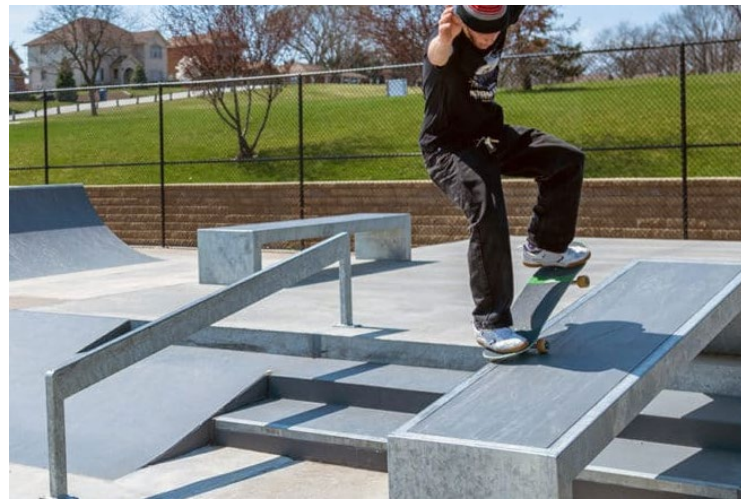


RAILS

- Solid flat grind rail
- Slappy curb
- Variety of rail shapes useful for skaters and BMX bikers

FINAL CONCEPT PRESENTATION | ELEMENTS + FEATURES

Steps + Ramps



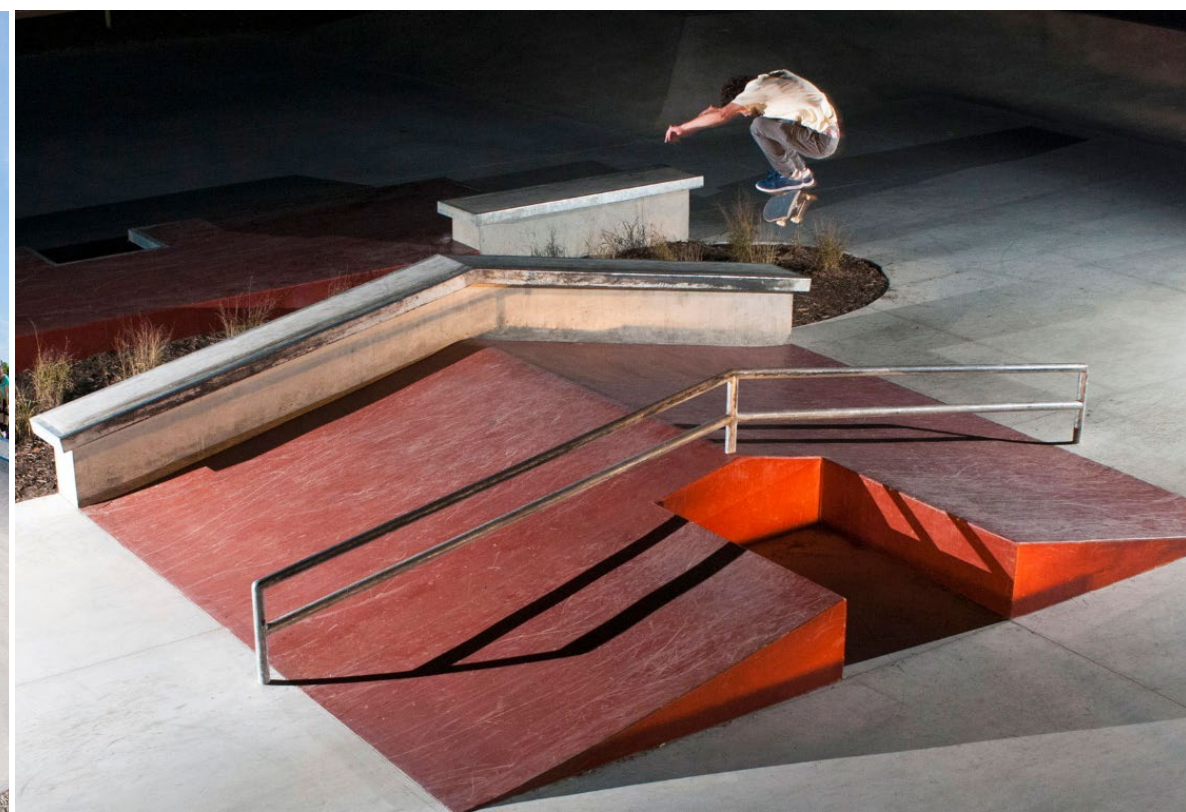
STEPS + RAMPS

- **Straight (not curved)**
- **Include street style features**
- **Provide safe spaces for spectators and for rest**



FINAL CONCEPT PRESENTATION | ELEMENTS + FEATURES

Wedges + Ramps



WEDGES + RAMPS

- A-Frames are desired
- Accommodate beginner skaters who may not be able to navigate cutouts

FINAL CONCEPT PRESENTATION | SHADE STRUCTURE



LUMOS SOLAR – SHADE STRUCTURE



POLIGON – SHADE STRUCTURE

FINAL CONCEPT PRESENTATION | PORTABLE TOILET ENCLOSURE



3-SIDED LAVATORY SCREEN ENCLOSURE OPTIONS

FINAL CONCEPT PRESENTATION | EVANSTON STANDARD FURNISHINGS



PATHWAY LIGHTING (MATCH EXISTING AND UPDATE EXISTING WITH LED LAMPS)



**DRINKING FOUNTAIN / PET BOWL
MOST DEPENDABLE FOUNTAINS**



**BIKE RACK
MADRAX**



**TRASH + RECYCLING RECEPTACLES
GLOBAL INDUSTRIES**

FINAL CONCEPT PRESENTATION | FURNISHINGS

**TRADITIONAL
PICNIC TABLES +
BENCHES
(NON-SKATABLE
FEATURES)**



**PROTECTIVE
STEEL EDGING**

**CUSTOM CAST IN PLACE CONCRETE BENCHES + SEATWALLS
WITH PROTECTIVE STEEL EDGING
(SKATABLE FEATURES)**

FINAL CONCEPT PRESENTATION | FURNISHINGS



SKATEBOARD REPAIR STATION (SARIS)



BIKE PUMP + BIKE REPAIR STATION (DERO FIXIT)

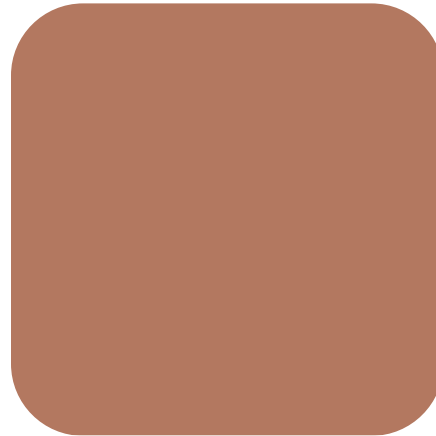
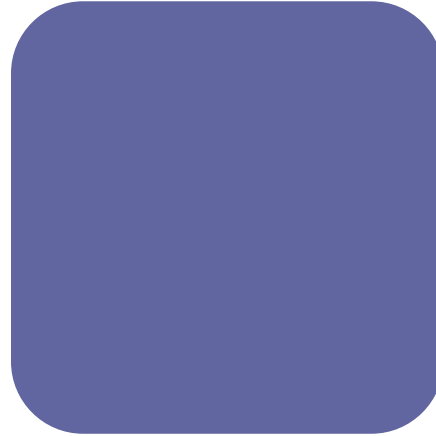
FINAL CONCEPT PRESENTATION | COLOR + CHARACTER



**FUTURE MURALS AT
NON-SKATING SURFACES**



INTEGRATED CONCRETE COLOR



ORANGE WITH BLUE ACCENT

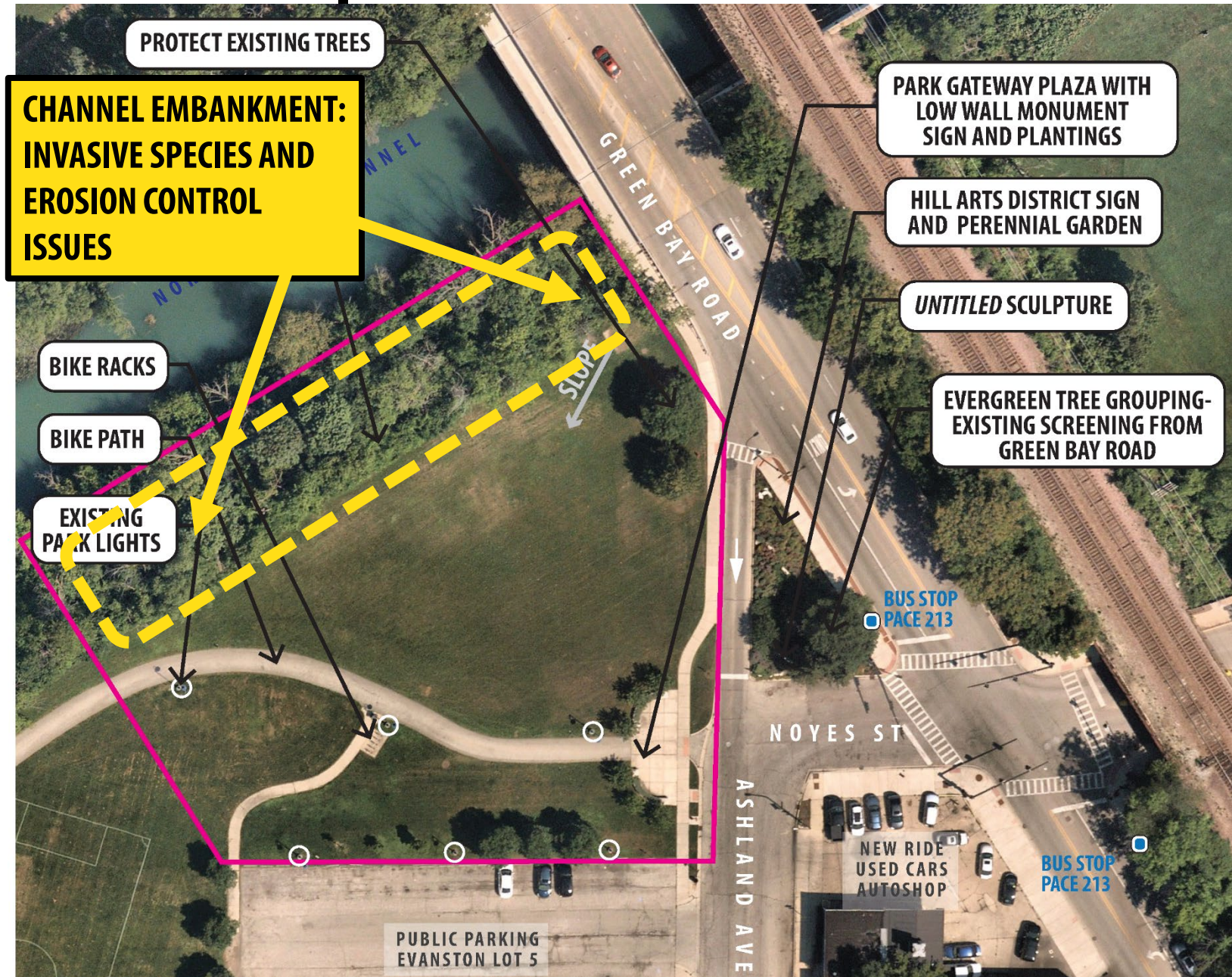


**ORANGE
BACKGROUND**

**PURPLE /
BLUE ACCENT**

**RECOMMENDED COLOR PALETTE
5TH WARD IDENTITY FEATURES**

FINAL CONCEPT PRESENTATION | EMBANKMENT STABILIZATION



**CHANNEL EMBANKMENT:
INVASIVE SPECIES AND
EROSION CONTROL
ISSUES**

PROTECT EXISTING TREES

PARK GATEWAY PLAZA WITH
LOW WALL MONUMENT
SIGN AND PLANTINGS

HILL ARTS DISTRICT SIGN
AND PERENNIAL GARDEN

UNTITLED SCULPTURE

EVERGREEN TREE GROUPING-
EXISTING SCREENING FROM
GREEN BAY ROAD

BIKE RACKS

BIKE PATH

EXISTING
PARK LIGHTS

BUS STOP
PACE 213

NOYES ST

ASHLAND AVE

NEW RIDE
USED CARS
AUTOSHOP

BUS STOP
PACE 213

PUBLIC PARKING
EVANSTON LOT 5



FINAL CONCEPT PRESENTATION | EMBANKMENT STABILIZATION



DuPage County Stormwater Management, Salt Creek



MWRD, Chicago River



MWRD Addison Creek, Northlake

FINAL CONCEPT PRESENTATION | LANDSCAPE PLANTINGS



EMBANKMENT PLANTINGS
LOW PROFILE NATIVE SEED MIX WITH FLOWERS



RAIN GARDEN



NATIVE PLANTINGS

FINAL CONCEPT PRESENTATION | THEMATIC IDENTITY

FLOW

The flow of the skatepark and Evanston as a lakefront community



FINAL CONCEPT PRESENTATION | CULTURAL IDENTITY

William H Twiggs is the namesake for Twiggs Park

- Moved to Evanston in 1884 at the age of 17
- Attended Garrett Biblical Seminary
- A local barber and printer. Edited the *Afro-American Budget*, circulated nationwide, and other periodicals
- A supporter of Evanston's African American community
- Served the City of Evanston as the City Sealer and Permit Clerk
- Active member and Sunday School Superintendent at Ebenezer A.M.E. Church



Martha and William Twiggs with children Wilbur, Agnes and Kathryn
c1900

Image credit: Shorefront Journal, Dino Robinson



FINAL CONCEPT | SITE LAYOUT



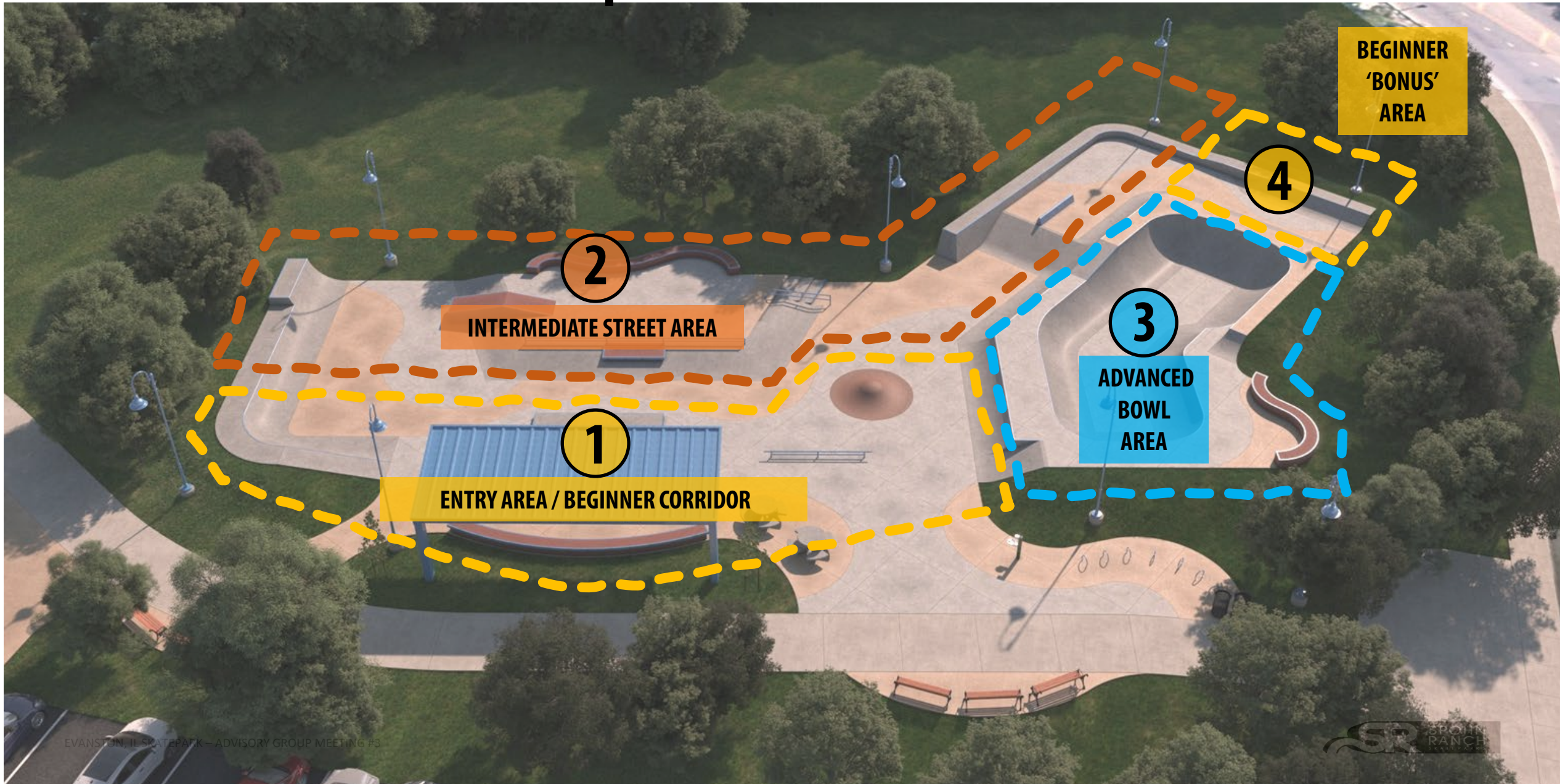
SKATE PARK | PROGRAM

- **10,000 square feet**
- **Not just a rectangle**
- **50/50 Street / Transition**
- **Beginner-focused zone**
- **Primarily above grade**

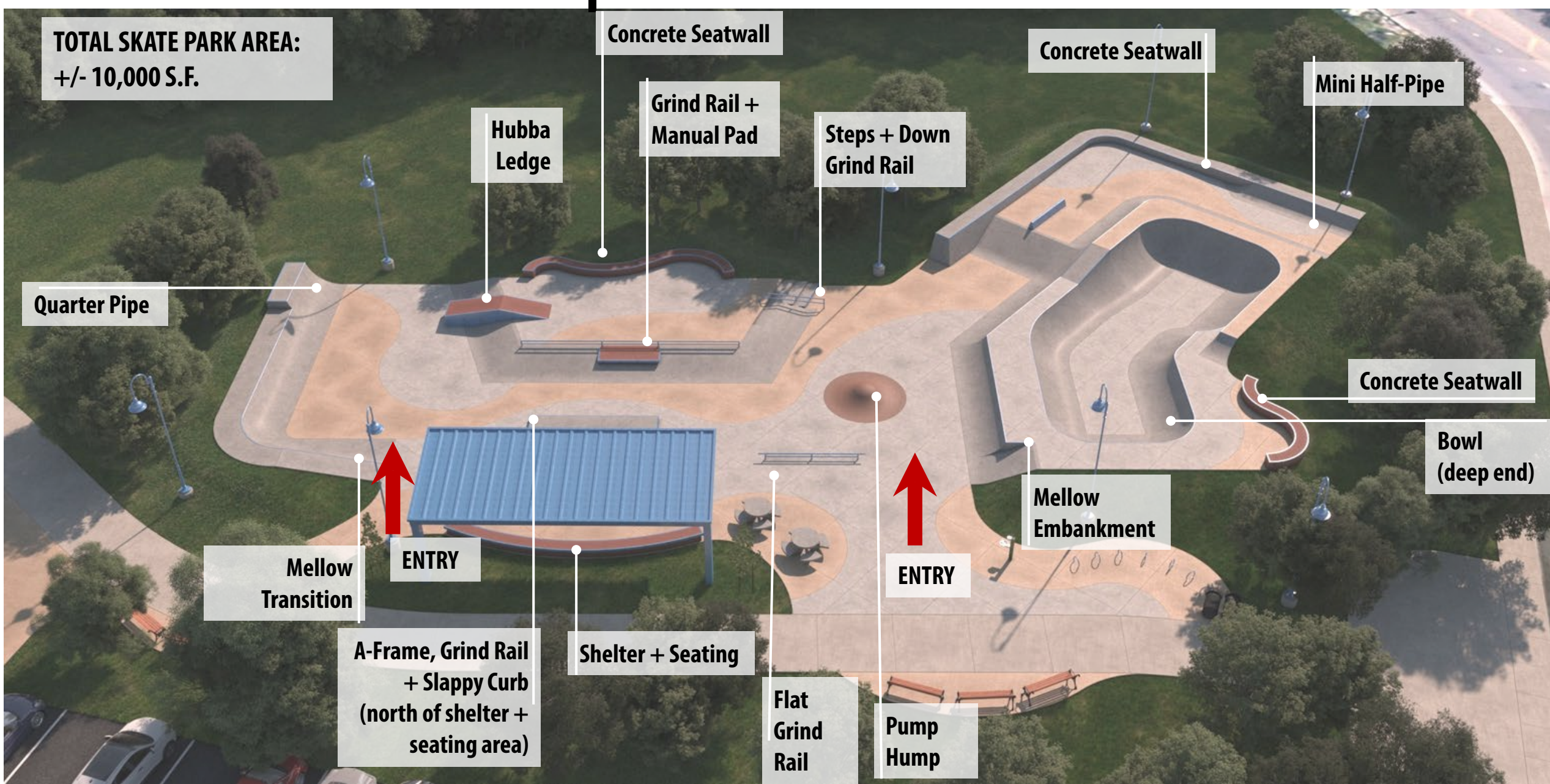
Key elements:

- **Bowl**
- **Pyramid hips**
- **A-Frame**
- **Stairs**
- **Flat Grind Rail**
- **Slappy Curb**
- **Spectator Seating**

FINAL CONCEPT PLAN | ZONE DIAGRAM



FINAL CONCEPT PLAN | SKATE PARK FEATURES



TOTAL SKATE PARK AREA:
+/- 10,000 S.F.

Concrete Seatwall

Concrete Seatwall

Mini Half-Pipe

Hubba
Ledge

Grind Rail +
Manual Pad

Steps + Down
Grind Rail

Quarter Pipe

Concrete Seatwall

Bowl
(deep end)



ENTRY



ENTRY

Mellow
Embankment

Mellow
Transition

A-Frame, Grind Rail
+ Slappy Curb
(north of shelter +
seating area)

Shelter + Seating

Flat
Grind
Rail

Pump
Hump

FINAL CONCEPT PLAN | OVERALL VIEW



FINAL CONCEPT PLAN | LOOKING NORTHWEST



FINAL CONCEPT PLAN | LOOKING SOUTH



FINAL CONCEPT PLAN | LOOKING NORTHEAST



NEXT STEPS | Q+A

Next Steps:

- **Construction Documentation**
- **Stay Tuned to the Project Website for Updates!**



**PROJECT
WEBSITE**

<https://www.cityofevanston.org/government/departments/public-works/evanston-skate-park>

Please enter your questions + comments into the Zoom Q+A