

<https://www.cityofevanston.org/government/departments/public-works/evanston-skate-park>

EVANSTON SKATE PARK

PUBLIC MEETING #4 SUMMARY

April 5, 2022 | Zoom Webinar | 6:00 pm

The purpose of Public Meeting #4 was to present project information, public feedback from public meeting #3, and (2) refined concept plans for public review and input. Prior to Public Meeting #4, previous public meetings were conducted March 17, 2021; May 25, 2021; and February 22, 2022. This meeting was conducted as a Zoom Webinar. Approximately 31 people participated in the meeting.

Prior to the meeting, an announcement was distributed to the community which contained links for the Zoom Webinar and the City’s dedicated project website. The announcement was distributed via the City of Evanston Skate Park website, community newsletter, emails, and social media pages. The City of Evanston Skate Park Advisory Group also distributed the announcement to their networks.




EVANSTON SKATE PARK
Join us in planning for Evanston’s future Skate Park!
BIG THANKS to everyone who came out to the last public meeting and took our community poll!
 The City of Evanston is working with the community to design a new skate park at the east end of Twigg’s Park. *We need your help to make this park the best it can be.*

Save the Date for Public Meeting #4
 This meeting will review the design work completed to date, present two refined skate park concepts, and solicit your input to help make this improvement a success.

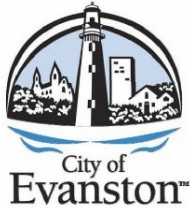
Tuesday, April 5th, 2022
 6:00 – 8:00 pm
 Zoom Webinar Link:
<https://us06web.zoom.us/j/88082605821>



ZOOM WEBINAR LINK
 Scan me through your camera!

**Your input matters to us.
 Please participate!**

Visit the project website for more information:
<https://www.cityofevanston.org/government/departments/public-works/evanston-skate-park>



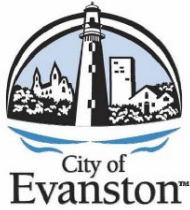
<https://www.cityofevanston.org/government/departments/public-works/evanston-skate-park>

MEETING AGENDA

1. **Introductions:** *Evanston staff, Consultant Team + Advisory Group*
2. **Project Introduction:** *Project History, Goals + Timeline*
3. **Community Outreach:** *Recap from Public Meeting #3*
4. **Concept Plan Presentation:** *Concepts C1 + C2*
5. **Input Activity**
6. **Next Steps:** Q+A

PRESENTATION

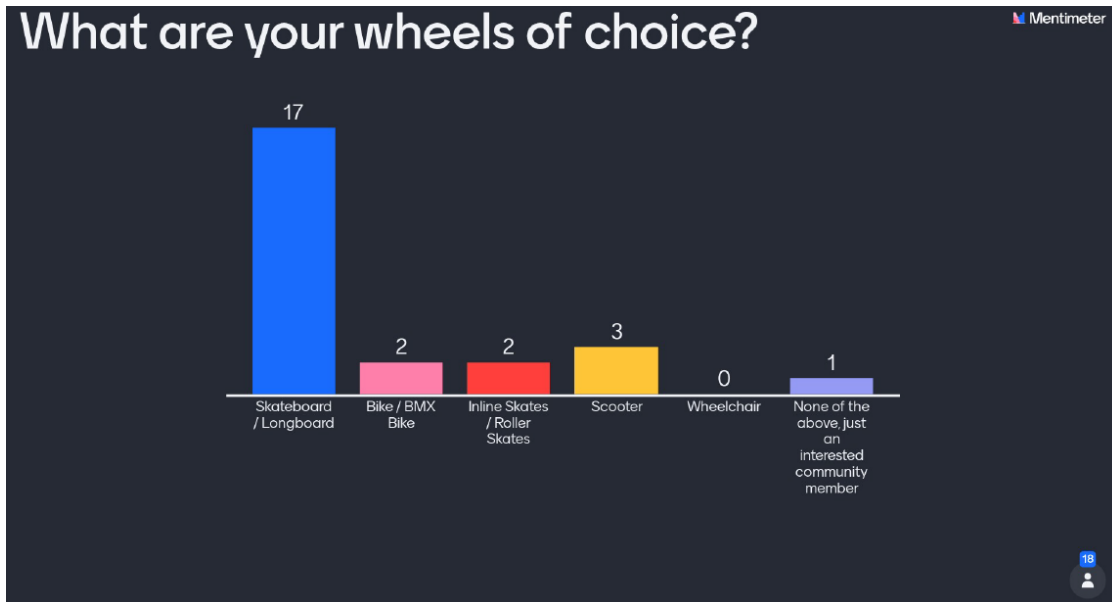
Following introductions for meeting participants and the overall project, Teska presented a recap of Skate Park efforts and activities conducted to date, followed by an overview of current and upcoming Skate Park planning activities. Teska presented Concepts C1 + C2, including site plans and 3-dimensional model views of each skate park concept. Following the presentation, Teska conducted an online workshop activity conducted via Mentimeter.

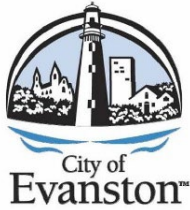


<https://www.cityofevanston.org/government/departments/public-works/evanston-skate-park>

WORKSHOP ACTIVITY

Approximately 20 people participated in the Mentimeter Workshop Activity. Key takeaways follow below and all Mentimeter results are attached to the end of this summary.

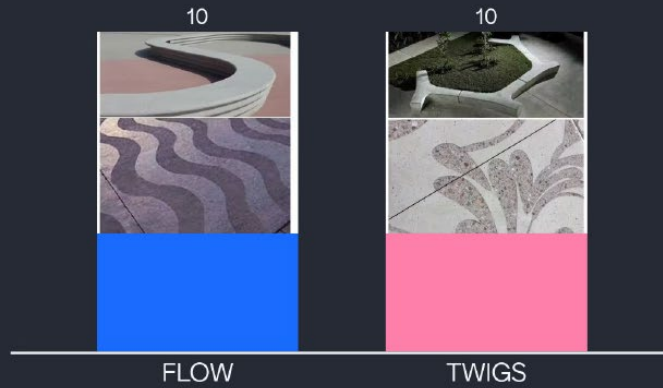




<https://www.cityofevanston.org/government/departments/public-works/evanston-skate-park>

Please select your preference for IDENTITY FEATURES

Mentimeter



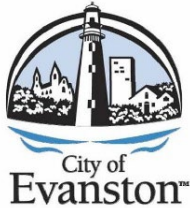
20

Please select your preference for the COLOR PALETTE

Mentimeter



20



<https://www.cityofevanston.org/government/departments/public-works/evanston-skate-park>

As we proceed with finalizing the skate park designs, please share any additional comments here. Mentimeter

If we are truly considering the bowl as a more advanced area, option a makes more sense. No roll in for sure.

I'm unclear on hours- is there adequate lighting for night time skating?

You can Ollie over the roll in!

Make the stairs less long, so they can be skate like actual stairs (like Grant park) rather than super long so its like a gap (like Deerfield). Moving the roll in further in the straight part so it can be gapped and wont be a safety issue for BMX.

The updates look FANTASTIC! Thank you! I would like to push for a more traditional grind edge on the manny pad rather than a slap pu curb. Maybe one on each side of the a frame wedges?

Impressive designs, appreciate the collaboration!

Yes! Please have park lights.

No roll in please.

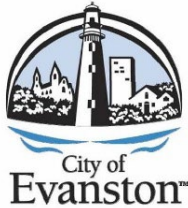
I love the idea of widening the sidewalk along green bay approaching the bridge.

26

ADDITIONAL COMMENTS

Additional comments provided at the Mentimeter activity are below, organized by topic:

1. **Hours of Skate Park operation:** What times of day will the skate park be open and what light levels are anticipated?
2. **Sidewalk along Green Bay Road:** Support to widen the existing sidewalk to better accommodate park users and people traveling between the park site and Ladd Arboretum.
3. **Bowl features:** No roll in features are desired and they should be removed; the vertical extension is desired and should remain; consider including a hip in the bowl.
4. **Stair features:** reduce the length of the stairs (it was noted that the stairs at Deerfield were too long and the stairs at Grant Park are the desired length).
5. **Manny Pad:** consider a more traditional grind edge instead of a slappy curb.
6. **Sculptural concrete feature at the north of the bowl in Concept C-1:** consider replacing with a hubba or wallride.
7. **Cultural identity features:** In addition to recognizing William H Twiggs, consider recognizing the local pioneering skater Carl McCall and his teammates on the Tom Thumb Skateboard Team.
8. **Additional features requested:** Wallride like Chase Plaza; more half-pipes for beginners.



<https://www.cityofevanston.org/government/departments/public-works/evanston-skate-park>

WRITTEN / VERBAL Q+A

Following the workshop activity, participants entered their questions and comments into the Zoom Q+A. In addition, meeting participants were invited to speak and clarify some of their questions and comments. A list of questions / comments organized by topic follows below:

C1: Light levels. Following up on the question above regarding lighting levels in the park, it was noted that the current park is designed to have security lighting levels, but not sports lighting levels. *Following the meeting, the project team is looking into what light levels would be appropriate for the skate park.*

C2: Ledges. It was noted that the ledges at Deerfield are hollow and that solid ledges are preferred.

C3: Seatwalls. The shape of the seatwall on the pyramid should be more gradual so that it is more skateable. For other seatwalls throughout the site, consider a variety of wall heights and lengths to provide diversity.

C4: Staircase. Consider adding another ledge to the north side of the staircase.

C5: Bowl. Eliminate the roll-in feature (this was repeated multiple times)

C6: Slappy curb. Request for straight edged slappy curb and a 'true Californian' slightly angled/rounded slappy curb.

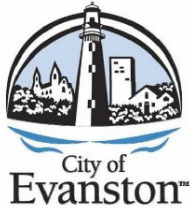
C7: Sculptural element at the northeast portion of Concept C-1. Could this become a more straight-forward feature such as a hubba ledge, wallride or keyhole window?

C8: Skate Park Management. Will all wheeled sports enthusiasts be welcome into the park, or will there be signage that limits who can use the park? *Per City of Evanston staff, the skate park will be welcoming of all users. There is no intention to keep non-skaters out of the park.*

C9: Quantity of Skate Park Users. How many skaters can be accommodated in the park? At what point will the park feel 'busy'? *Per Spohn Ranch, based on the current concept designs, 30 riders can use this park at one time without it feeling crowded.*

C10: Carbon Cure Concrete. Can carbon cure concrete be considered at the skate park?

The project team thanked meeting participants for their feedback. All inputs will be considered in the development of the final concept plan.



<https://www.cityofevanston.org/government/departments/public-works/evanston-skate-park>

The Q+A session ended at approximately 7:15pm. At that time, the project team reviewed next steps.

NEXT STEPS:

1. The design team will review public input with the Advisory Group.
2. The design team will prepare (1) Refined Concept for community input.
3. The next public meeting #5 will be held May 17th, 2022.
4. The community is invited to review the project website which contains a form for additional questions and comments. The public meeting materials, including meeting presentations, summaries, and results of community input activities will be posted to the website.



<https://www.cityofevanston.org/government/departments/public-works/evanston-skate-park>

The meeting adjourned at approximately 7:20 pm.

Encl: presentation, public meeting workshop results



EVANSTON SKATE PARK

PUBLIC MEETING #4

April 5, 2022 | Zoom Webinar | 6pm

AGENDA

- 1. Introductions:** *Evanston Staff, Consultant Team + Advisory Group*
- 2. Project Introduction:** *Project History, Goals + Timeline*
- 3. Community Outreach:** *Recap from Public Meeting #3*
- 4. Concept Plan Presentation:** *Concepts C1 + C2*
- 5. Input Activity**
- 6. Next Steps:** *Q+A*



INTRODUCTIONS

CITY OF EVANSTON TEAM



Stefanie Levine, PLA *Senior Project Manager, City of Evanston*

Lara Biggs, PE *Capital Planning Bureau Chief/ City Engineer, City of Evanston*

CONSULTANT TEAM



Jodi Mariano, PLA
Principal +
Project Manager



Heather Faivre, PLA
Senior Associate
Landscape Architect



Vince Onel
Skate Park Designer



Adam Eichorn
Skate Park Designer



Martin Michalowicz,
PE
Civil Engineer

INTRODUCTIONS

ADVISORY GROUP

Karim Alhamwi

Juan Geracaris

Pamela Rice Bailey

Patrick Hageman

Luca Berley

Quentin Herzig

Judah Bernstein

Aaron Kaplan

John Bryan

Nathan Kipnis

Heather Bublick

Ross Monzo

Councilmember Burns

Eric Pitt

Dan Dupuis

Joseph Sargentt

Nyles Eason

Matthew Snow

Yasmin Fatah

Gabe Weiss

Alex Felts

Jake Wiens

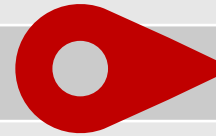


PROJECT INTRODUCTION

COMPLETED ACTIVITIES	2021	January	City Council Meeting (01/19/21)
		March	Public Meeting #1 (03/17/21) Public Survey (1,056 responses)
		May	Public Meeting #2 (05/25/21) <i>Site selection at Twiggs Park finalized</i>
		August	Application for OSLAD grant funding
		October	Consultant Team Selected for Design
CURRENT + UPCOMING ACTIVITIES	2022	January – February	Public Engagement + (3) Initial Concepts
		March – April	Public Engagement + (2) Refined Concepts
		April – May	Public Engagement + (1) Final Concept
		May – September	Construction Document Preparation
		September (2022) – February (2023)	Bidding + Negotiations
	2023	March – November	Anticipated Construction Period
	2024	September	Warranty Review

PROJECT INTRODUCTION | MEETING SCHEDULE

CONCEPT PHASE	2022 ADVISORY MEETINGS	2022 PUBLIC MEETINGS
INITIAL CONCEPTS	01/11/2022	
	02/01/2022	
		02/22/2022
REFINED CONCEPTS	03/15/2022	
		04/05/2022
FINAL CONCEPT	04/26/2022	
		05/17/2022

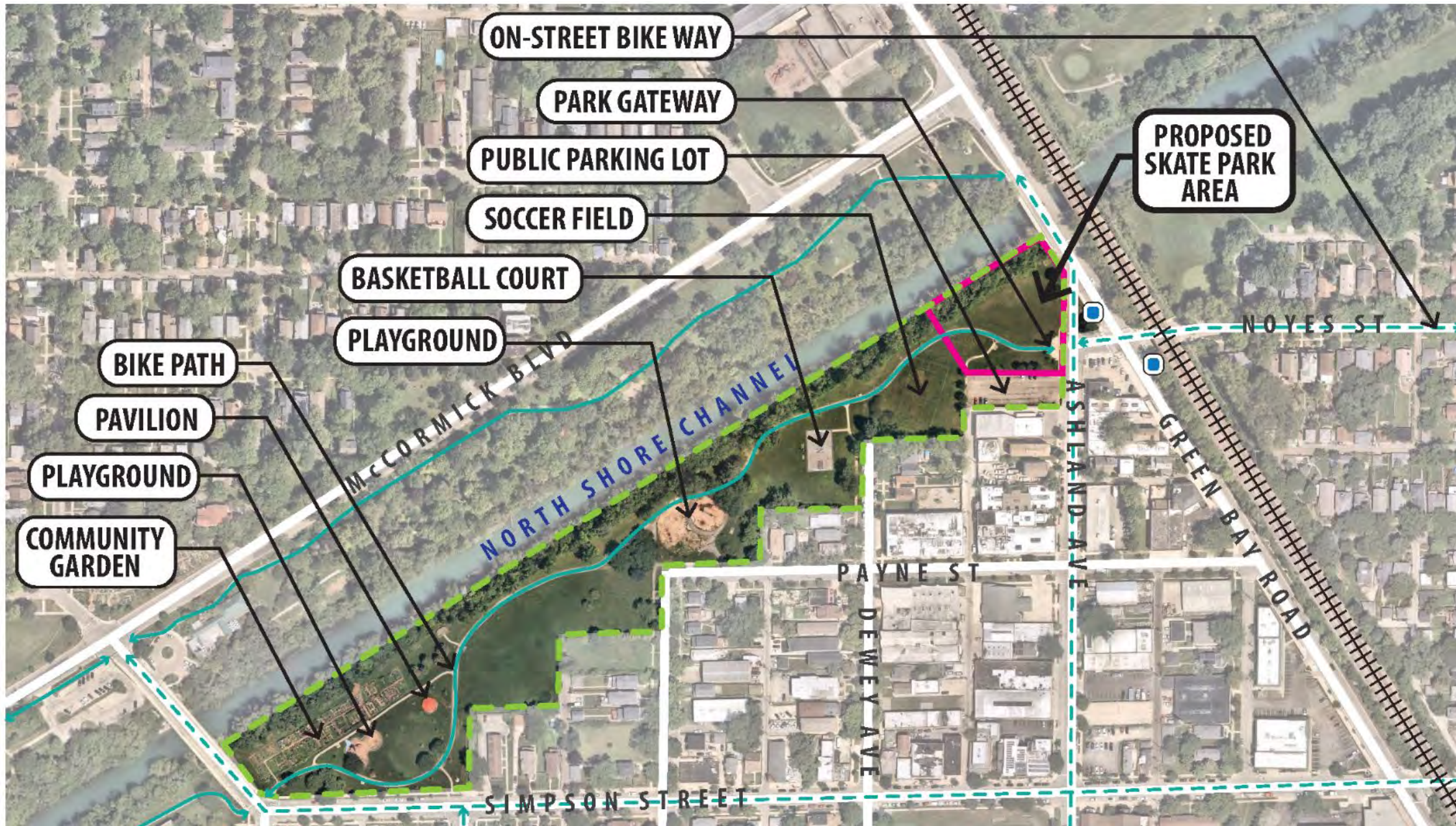


PROJECT INTRODUCTION | GOALS

- 1. Construct an in-ground, custom concrete skate park at the eastern end of Twiggs Park.**
- 2. Accommodate additional park features as determined through the engagement process.** *(Such as a shade structure, site furnishings, lighting, portable toilets, drinking fountain, drainage system, pathways, signage, and landscaping).*
- 3. Modify existing park features as required to accommodate the skate park design.**
- 4. Address the adjacent eroded and unstable embankment to the North Shore Channel.**
- 5. Plan for a future restroom facility.**

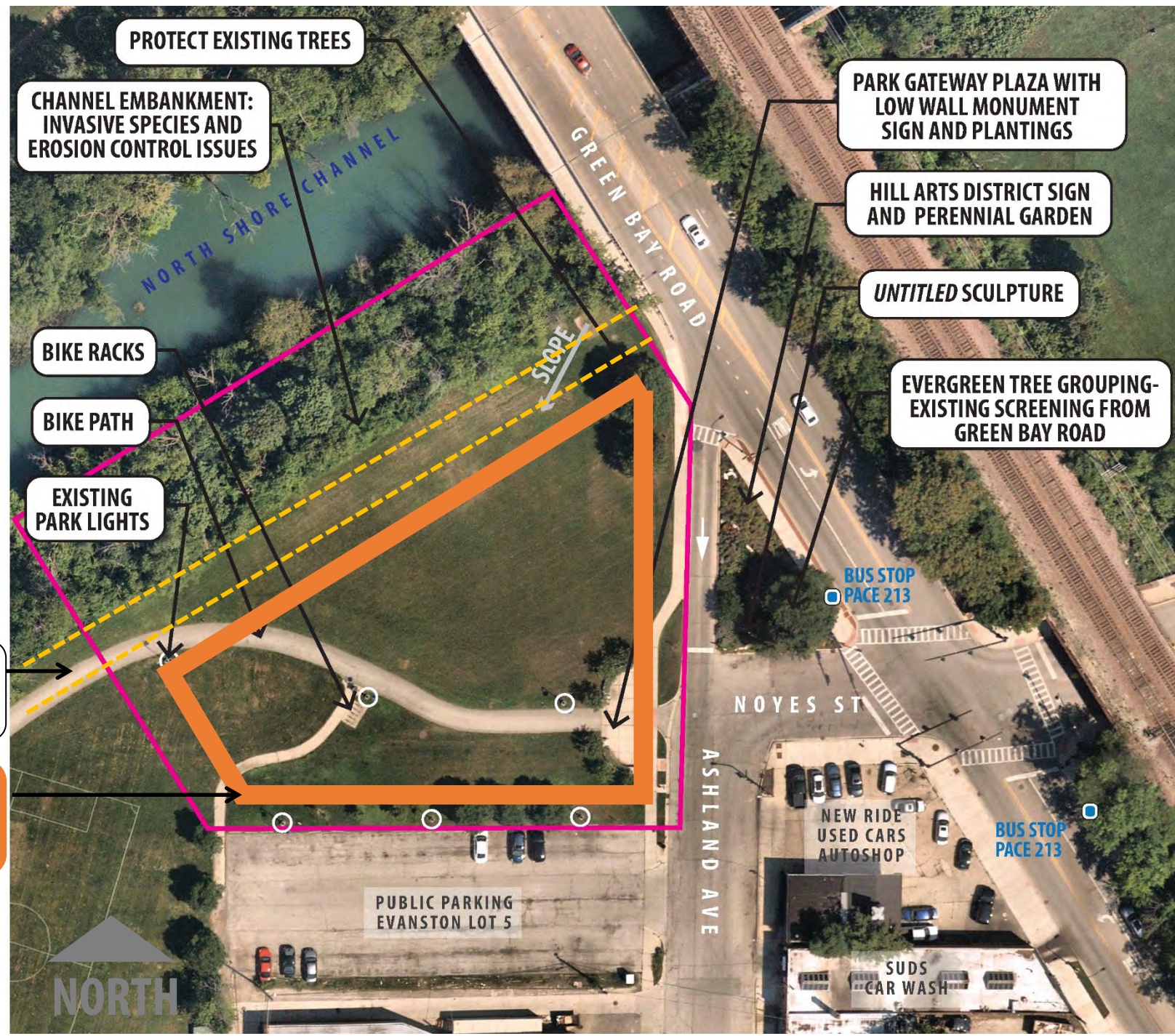
WILLIAM H. TWIGGS PARK

PROJECT INTRODUCTION | PROJECT SITE



PROJECT INTRODUCTION

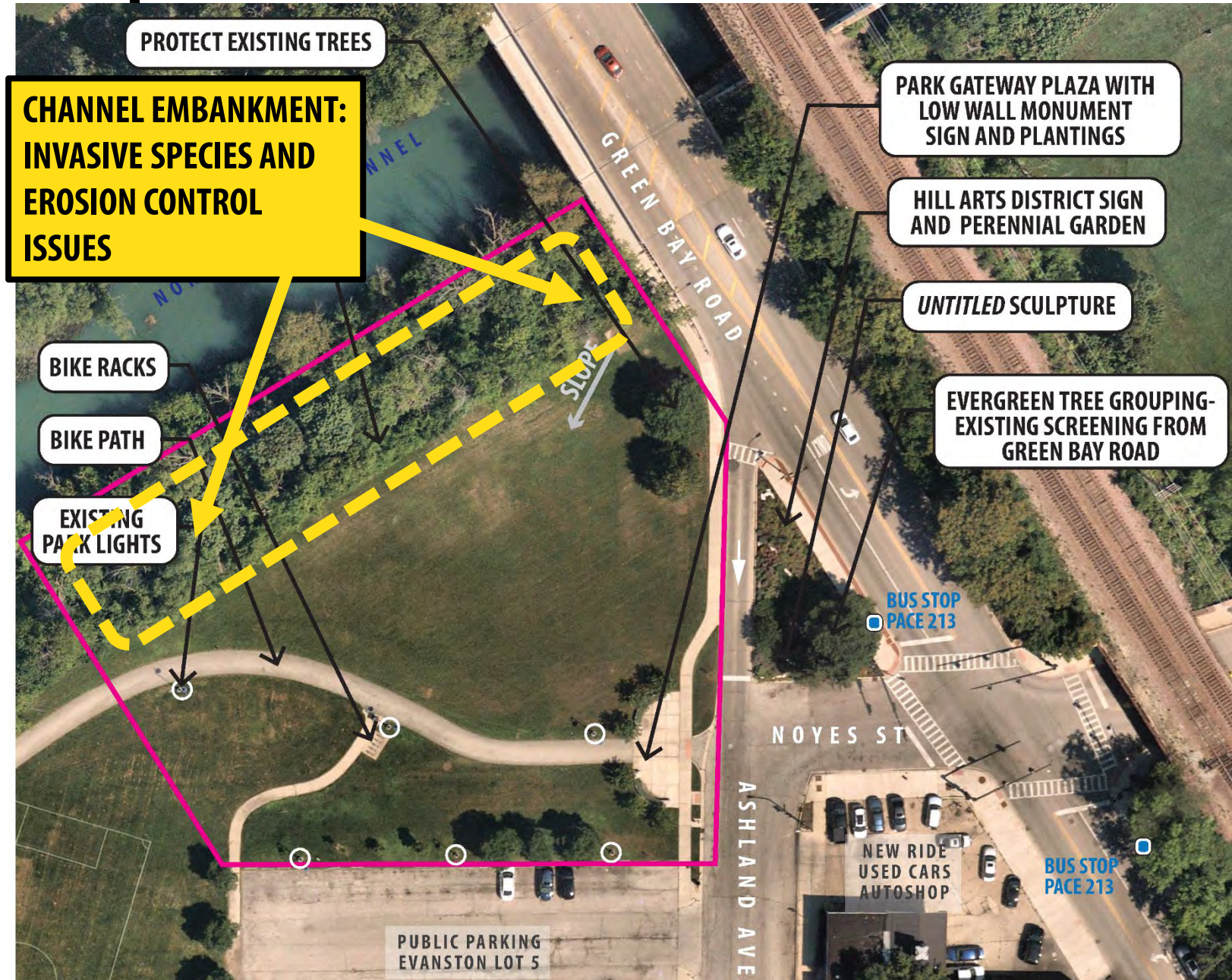
PROJECT SITE



NORTHWEST WATER COMMISSION EASEMENT

PROJECT AREA +/- 25,000 sf

CONCEPT PRESENTATION | EMBANKMENT STABILIZATION



CONCEPT PRESENTATION | EMBANKMENT STABILIZATION



DuPage County Stormwater Management, Salt Creek



MWRD, Chicago River



MWRD Addison Creek, Northlake

COMMUNITY OUTREACH | ACTIVITIES CONDUCTED TO DATE

COMMUNITY POLL

- **Poll opened:** January 27th, 2022
- **Poll closed:** February 15th, 2022
- **Participants:** 638 voices
- **Distribution:** City Newsletter / Social media

PUBLIC MEETING #3

- **Date:** February 22nd, 2022
- **Participants:** 48 voices
- **Distribution:** City Newsletter / Social media


City of Evanston™

EVANSTON SKATE PARK
Join us in planning for Evanston's future Skate Park!

The City of Evanston is working with the community to design a new skate park at the east end of Twiggs Park. We need your help to make this park the best it can be. Two ways to get involved:

1

Take the Community Poll!
Please share your thoughts about potential park features + functions.

Poll closes February 15th, 2022

Poll Link:
<https://www.menti.com/sksu95hr4j>



2

Join our next public meeting!
This meeting will include review of initial concept designs for the new skate park.

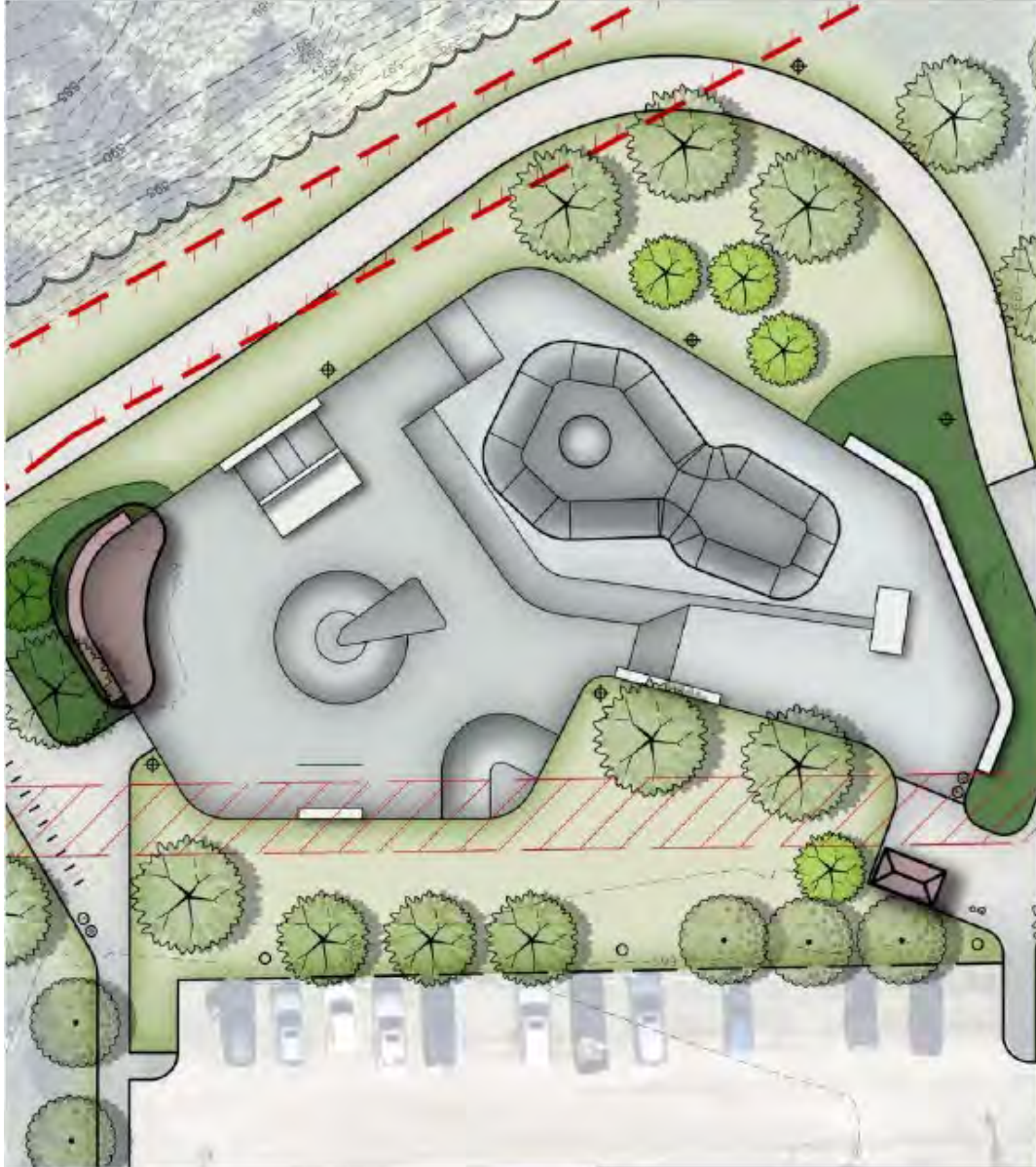
Tuesday, February 22nd, 2022
6:00 – 8:00 pm

Zoom Link:
<https://us06web.zoom.us/j/87981863958>



*Your input matters to us.
Please participate!*

PUBLIC MEETING #3 | KEY TAKEAWAYS

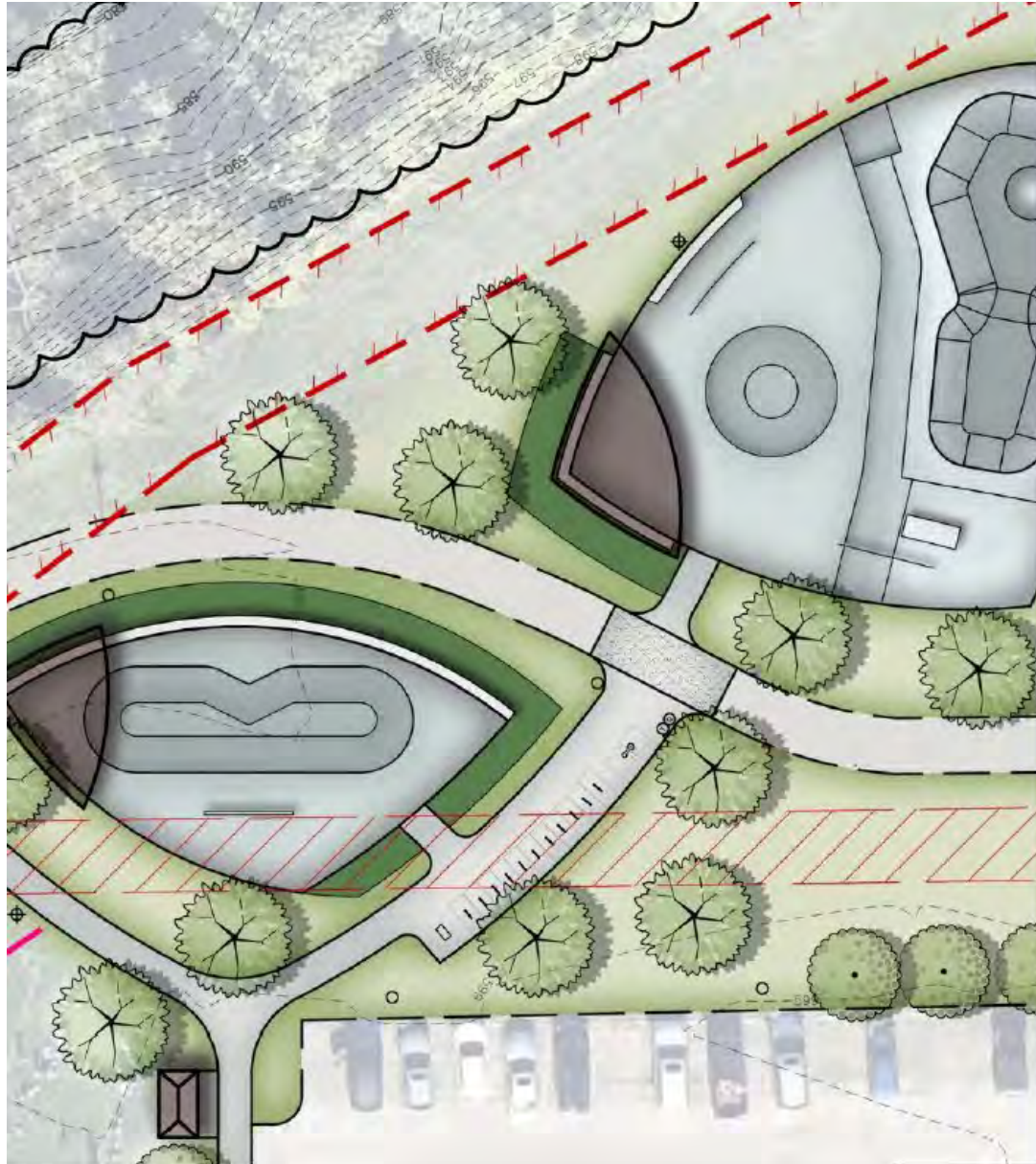


Mentimeter

In a sentence or two,
tell us what you like
(or don't like) about
CONCEPT A

1. **Bike Path.** Dislike bike path location
2. **Entrances.** Like two entrances and access from the parking lot.
3. **Flow.** Mixed reviews about optimal vs less optimal flow.
4. **Beginner Space.** Need for more defined beginner space.

PUBLIC MEETING #3 | KEY TAKEAWAYS



Mentimeter

In a sentence or two,
tell us what you like
(or don't like) about
CONCEPT B

1. ***Separation of beginner / advanced spaces.*** Generally disliked because it is inefficient, limits flow, removes the sense of community desired in the park.
2. ***Bike path / skate park entrances.*** Concerns about conflicts between bikers and skaters
3. ***Beginner 'Noping' Bowl.*** Mixed reviews for and against the Noping Bowl.

PUBLIC MEETING #3 | KEY TAKEAWAYS

In a sentence or two,
tell us what you like
(or don't like) about
CONCEPT C

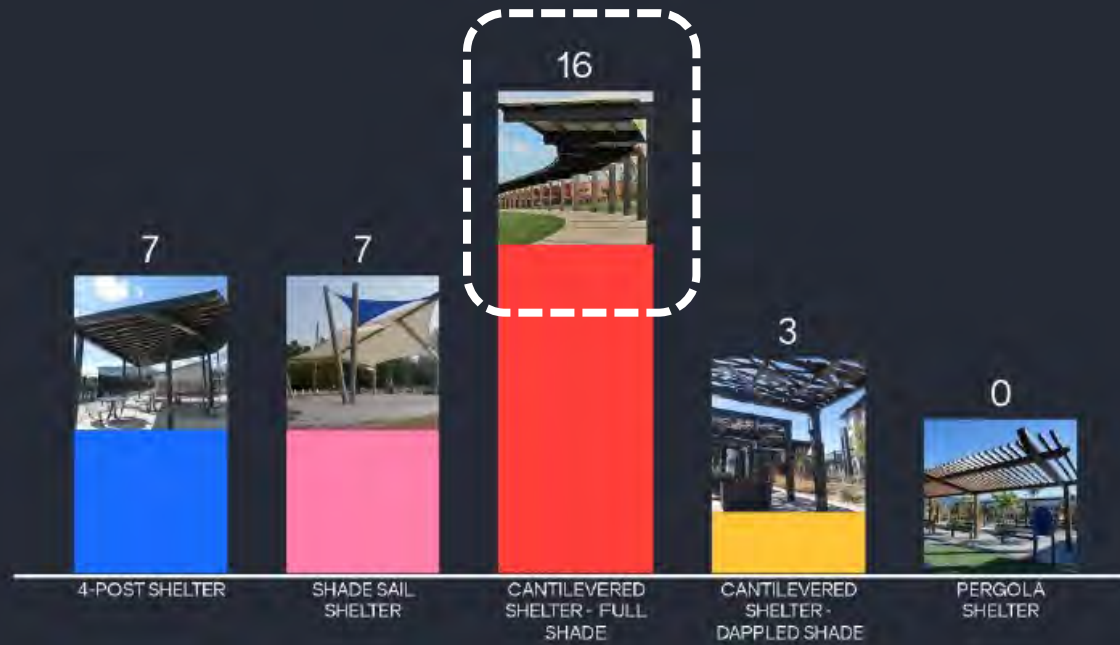
1. **Preferred Concept.** Concept C preferred over other concepts.
2. **Beginner Area.** Incorporate a beginner area into this concept.
3. **Shade Structure.** Consider relocating the shade structure to the south to provide more skate features at the west.



PUBLIC MEETING #3 | KEY TAKEAWAYS

What SHADE STRUCTURE is most appealing to you?

Mentimeter



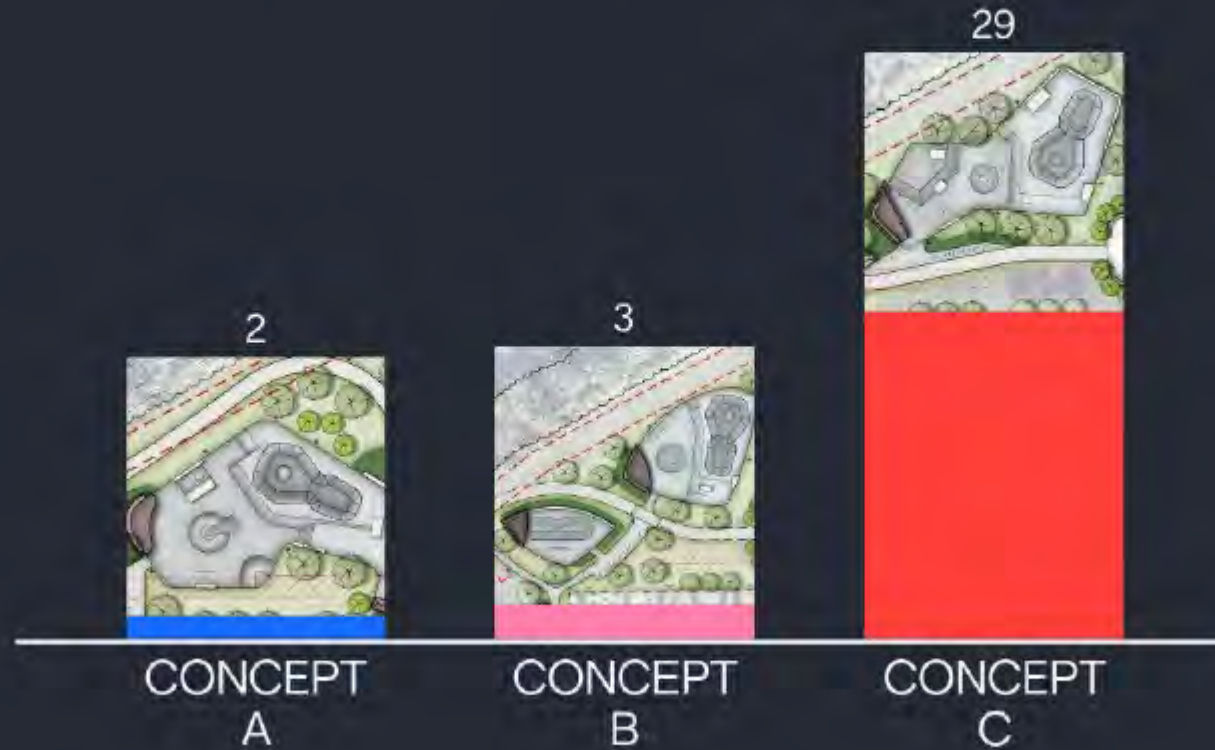
33



PUBLIC MEETING #3 | KEY TAKEAWAYS

Please select your preferred SKATE PARK CONCEPT

Mentimeter



PUBLIC MEETING #3 | KEY TAKEAWAYS

Please rank the BEGINNER SKATE PARK FEATURES that are most appealing to you. (highest preferences at the top)

Mentimeter



PUBLIC MEETING #3 | KEY TAKEAWAYS

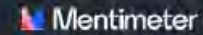
Mentimeter

Please rank the INTERMEDIATE / ADVANCED SKATE PARK FEATURES that are most appealing to you. (highest preferences at the top)



PUBLIC MEETING #3 | KEY TAKEAWAYS

Are there any other features that you would like to see included in the SKATE PARK?



SKATE FEATURES

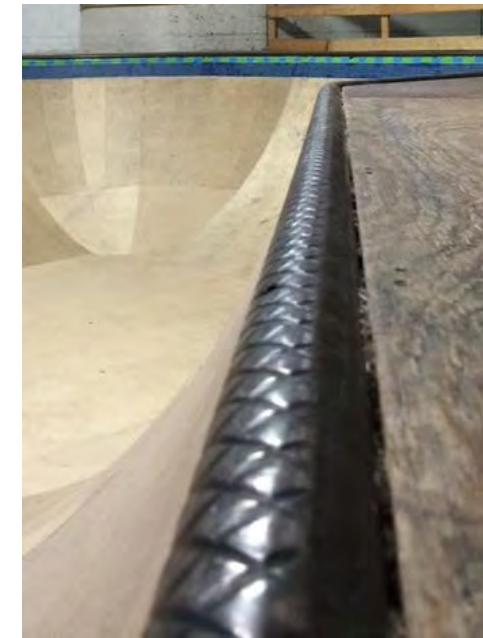
- a. Pyramid
- b. Small Quarter Pipe (2 feet tall)
- c. Bank to Ledge / Drop Ledge
- d. Euro Gap
- e. Snake Run / Pump Track
- f. 6 Stair
- g. Abstract obstacles
- h. Bump Ramp
- i. 3-foot ledge to Acid Drop Off
- j. A Wall Ride (like Chase Plaza in Chicago)
- k. Beginner features located central to skate park (like Deerfield)

PARK FEATURES

- a. Environmentally friendly features, such as native flowers and a solar shade structure
- b. Mural wall and support for local artists
- c. Water fountain / bottle filler

CONCEPT PRESENTATION | ELEMENTS + FEATURES

Bowls, Banks + Copings



MEDIUM + SHALLOW BOWLS PREFERRED

- **Steel copings**
- **Variety within the bowl**

CONCEPT PRESENTATION | ELEMENTS + FEATURES

Ledges + Rails



LEDGES

- Low and wide
- Grind ledge
- Manual 'Manny' Pad

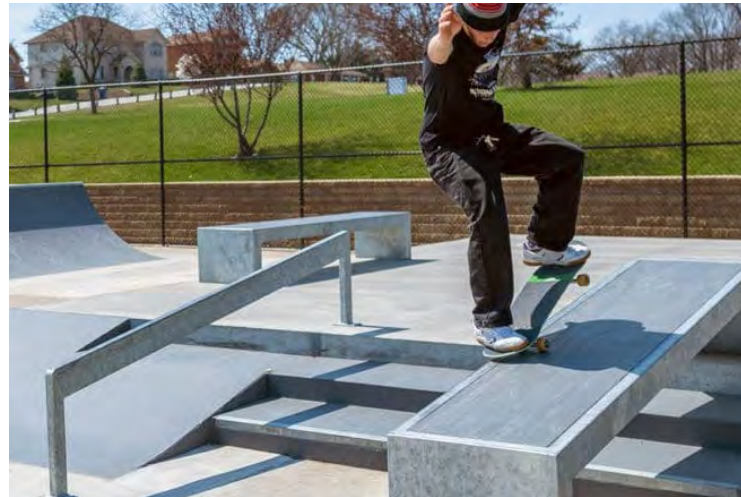


RAILS

- Solid flat grind rail
- Slappy curb
- Variety of rail shapes useful for skaters and BMX bikers

CONCEPT PRESENTATION | ELEMENTS + FEATURES

Steps + Ramps



STEPS + RAMPS

- **Straight (not curved)**
- **Include street style features**
- **Provide safe spaces for spectators and for rest**



CONCEPT PRESENTATION | ELEMENTS + FEATURES

Wedges + Ramps



WEDGES + RAMPS

- A-Frames are desired
- Accommodate beginner skaters who may not be able to navigate cutouts

CONCEPT PRESENTATION | SOLAR SHADE STRUCTURE OPTION

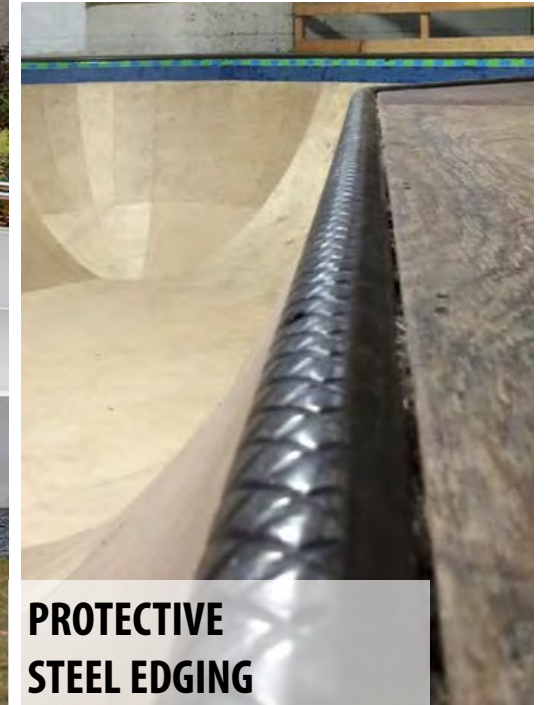


LUMOS SOLAR – SHADE STRUCTURE

CONCEPT PRESENTATION | FURNISHINGS



CUSTOM CAST IN PLACE CONCRETE BENCHES + SEATWALLS



**PROTECTIVE
STEEL EDGING**

CONCEPT PRESENTATION | FURNISHINGS, EVANSTON STANDARD



PATHWAY LIGHTING (MATCH EXISTING AND UPDATE EXISTING WITH LED LAMPS)



**DRINKING FOUNTAIN / PET BOWL
MOST DEPENDABLE FOUNTAINS**



**BIKE RACK
MADRAX**



**TRASH + RECYCLING RECEPTACLES
GLOBAL INDUSTRIES**

CONCEPT PRESENTATION | COLOR + CHARACTER

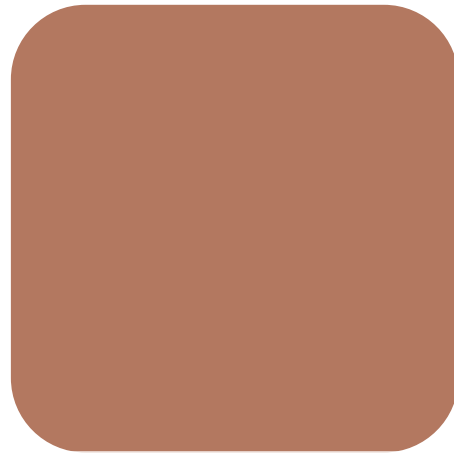
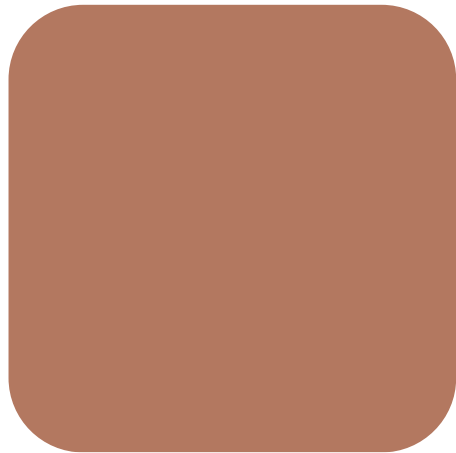
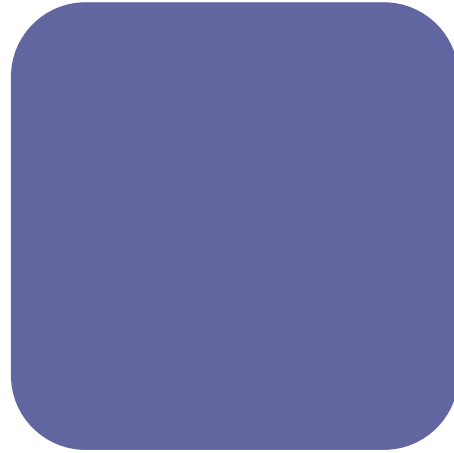
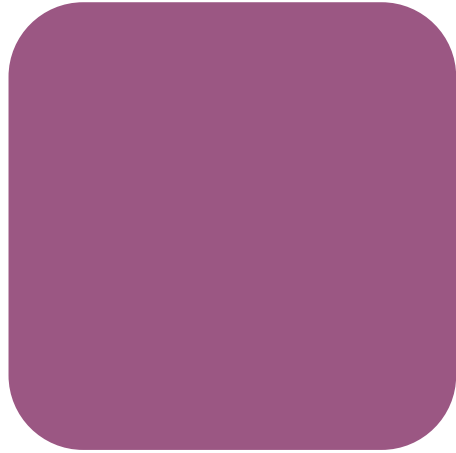


**FUTURE MURALS AT
NON-SKATING SURFACES**



INTEGRATED CONCRETE COLOR

CONCEPT PRESENTATION | COLOR + CHARACTER



**OPTION 1:
ORANGE WITH PURPLE ACCENT**

**OPTION 2:
ORANGE WITH BLUE ACCENT**



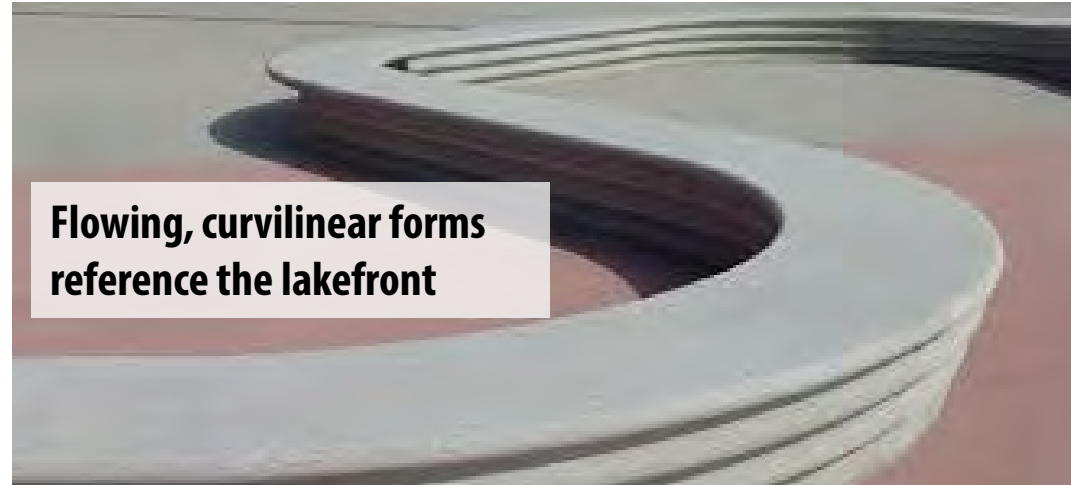
**RECOMMENDED COLOR PALETTE
5TH WARD IDENTITY FEATURES**

CONCEPT PRESENTATION | THEMATIC IDENTITY

SEATWALLS

CONCEPT 1: FLOW

The flow of the skatepark and Evanston as a lakefront community

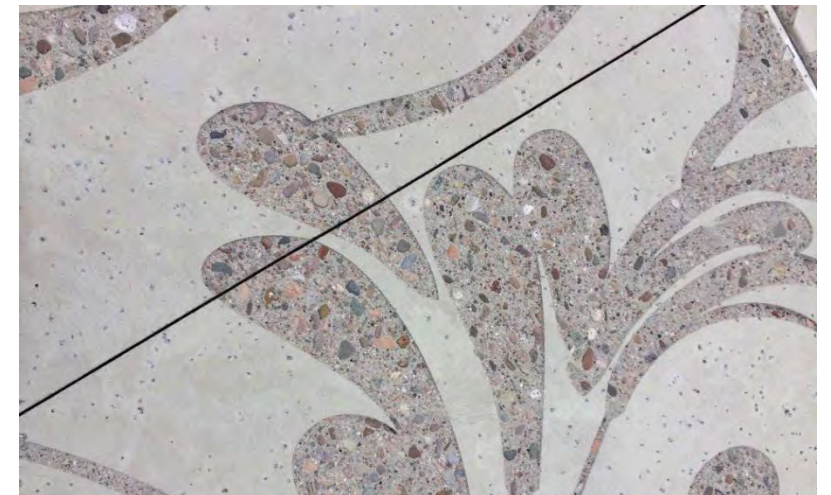


ETCHED CONCRETE



CONCEPT 2: TWIGS

Twiggs Park name and the park's natural environment



CONCEPT PRESENTATION | CULTURAL IDENTITY

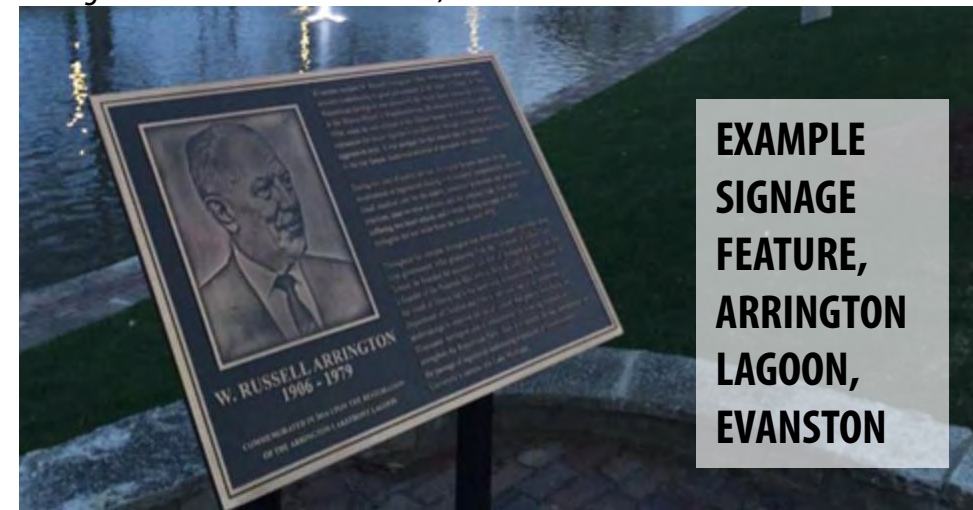
William H Twiggs is the namesake for Twiggs Park

- Moved to Evanston in 1884 at the age of 17
- Attended Garrett Biblical Seminary
- A local barber and printer. Edited the *Afro-American Budget*, circulated nationwide, and other periodicals
- A supporter of Evanston's African American community
- Served the City of Evanston as the City Sealer and Permit Clerk
- Active member and Sunday School Superintendent at Ebenezer A.M.E. Church



Martha and William Twiggs with children Wilbur, Agnes and Kathryn
c1900

Image credit: Shorefront Journal, Dino Robinson



EXAMPLE
SIGNAGE
FEATURE,
ARRINGTON
LAGOON,
EVANSTON

REFINED CONCEPT C1 | SITE LAYOUT



SKATE PARK | PROGRAM

- **10,000 square feet**
- **Not just a rectangle**
- **50/50 Street / Transition**
- **Beginner-focused zone**
- **Primarily above grade**

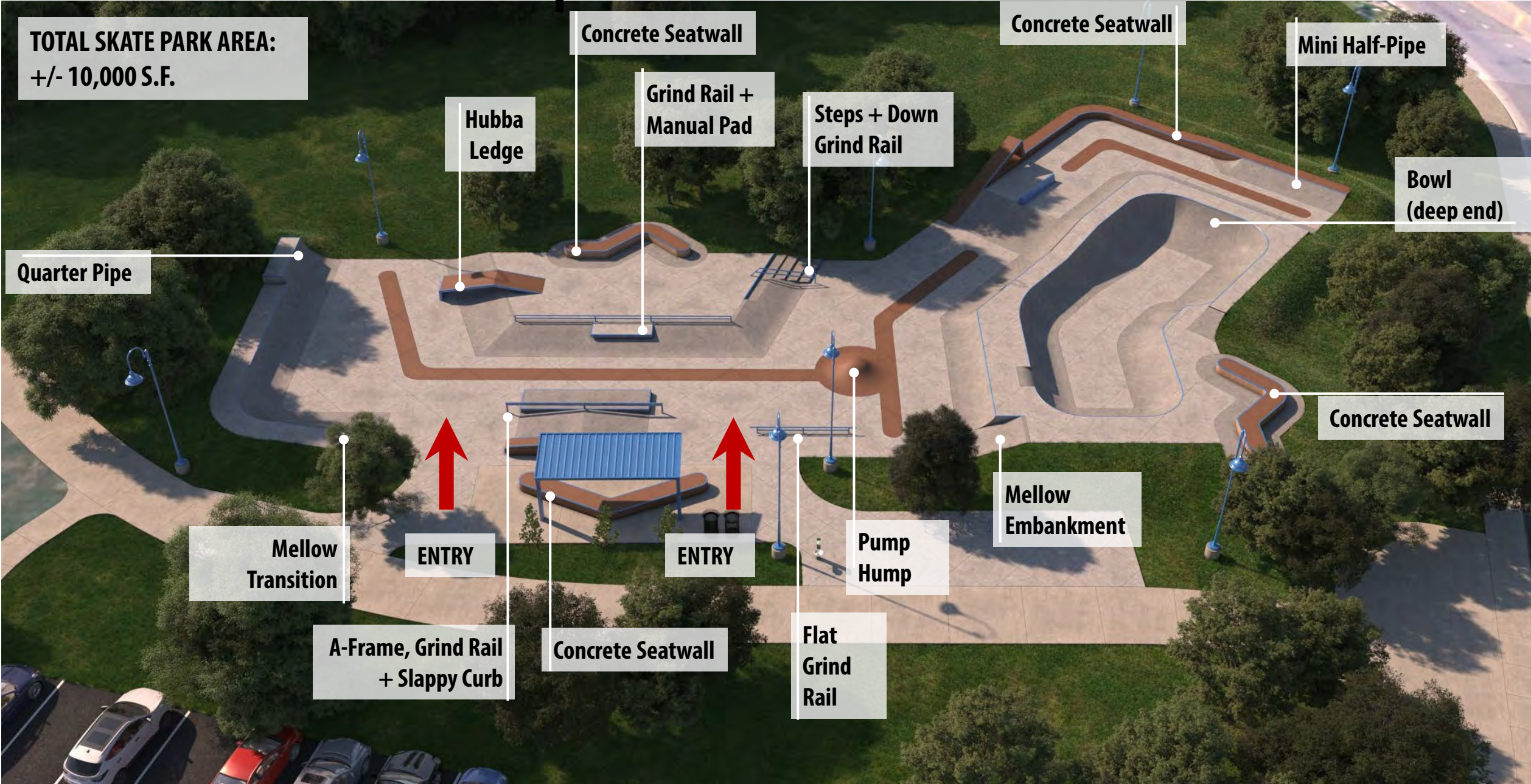
Key elements:

- **Bowl**
- **Pyramid hips**
- **A-Frame**
- **Stairs**
- **Flat Grind Rail**
- **Slappy Curb**
- **Spectator Seating**

REFINED CONCEPT C1 | ZONE DIAGRAM



REFINED CONCEPT C1 | SKATE PARK FEATURES



TOTAL SKATE PARK AREA:
+/- 10,000 S.F.

Concrete Seatwall

Concrete Seatwall

Mini Half-Pipe

Grind Rail +
Manual Pad

Steps + Down
Grind Rail

Bowl
(deep end)

Hubba
Ledge

Quarter Pipe

Concrete Seatwall

Mellow
Embankment

ENTRY

ENTRY

Pump
Hump

Mellow
Transition

A-Frame, Grind Rail
+ Slappy Curb

Concrete Seatwall

Flat
Grind
Rail

CONCEPT C1 | VIEWS



CONCEPT C1 | VIEWS



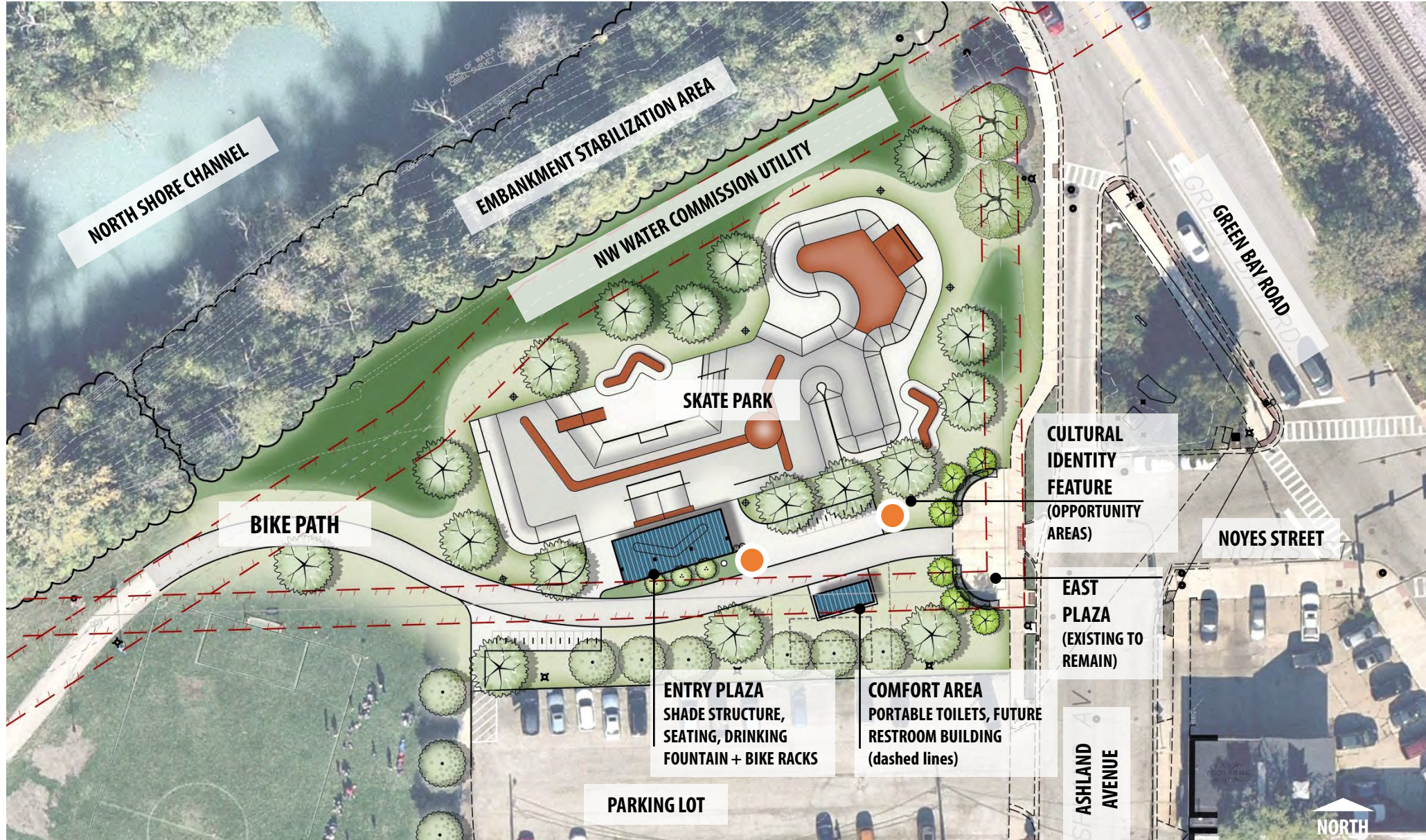
CONCEPT C1 | VIEWS



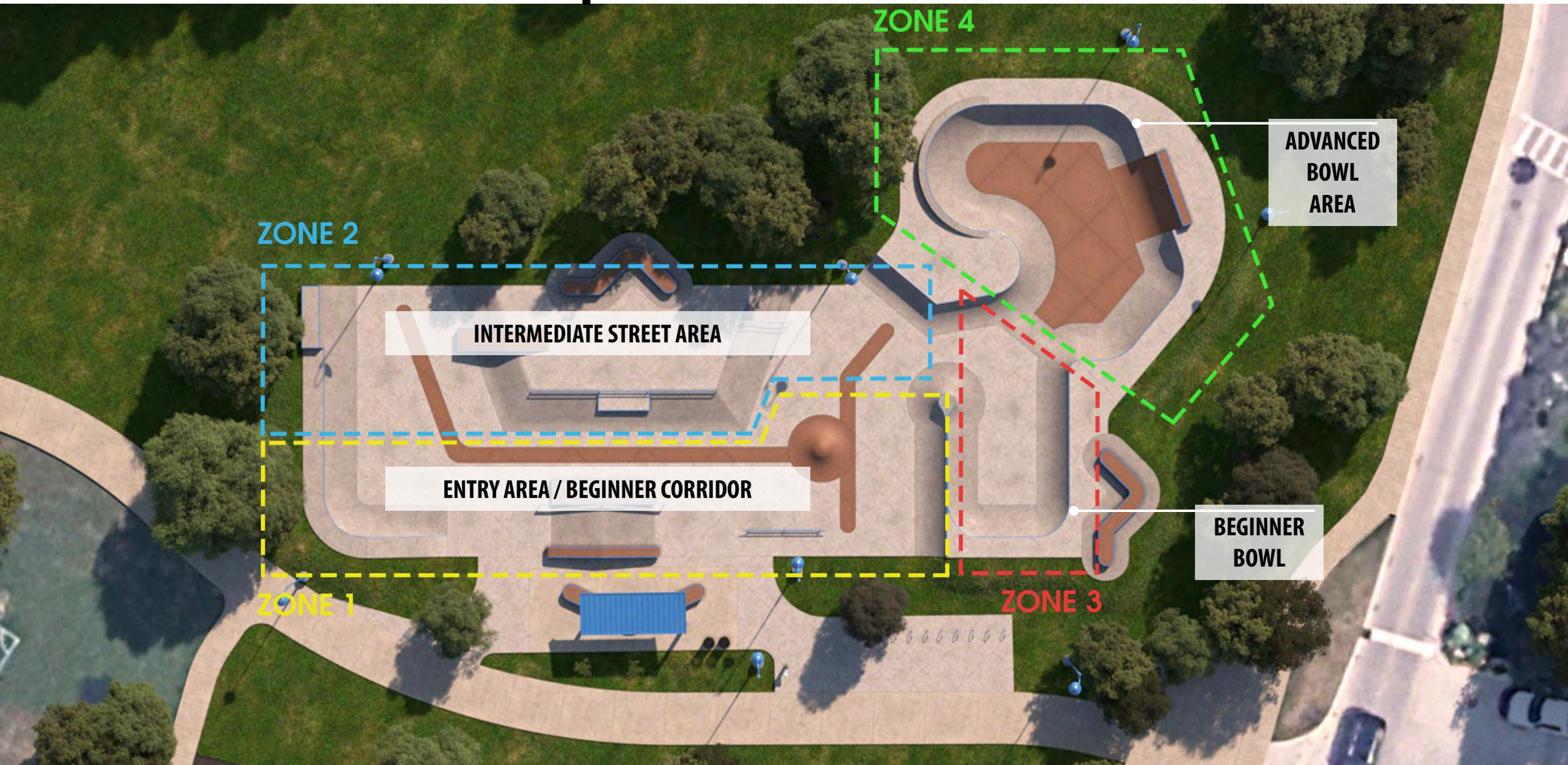
CONCEPT C1 | VIEWS



REFINED CONCEPT C2 | SITE LAYOUT



REFINED CONCEPT C2 | ZONE DIAGRAM



REFINED CONCEPT C2 | SKATE PARK FEATURES

TOTAL SKATE PARK AREA:
+/- 10,000 S.F.

Concrete Seatwall

Corner Pocket

Bank Extension

Grind Rail + Manual Pad

Bowl (deep end)

Hubba Ledge

Steps + Down
Grind Rail

Open Bowl +
Waterfall Ramp

Quarter Pipe

Bowl (shallow end)

Mellow
Transition

ENTRY

ENTRY

Pump
Hump

Bank Ramp

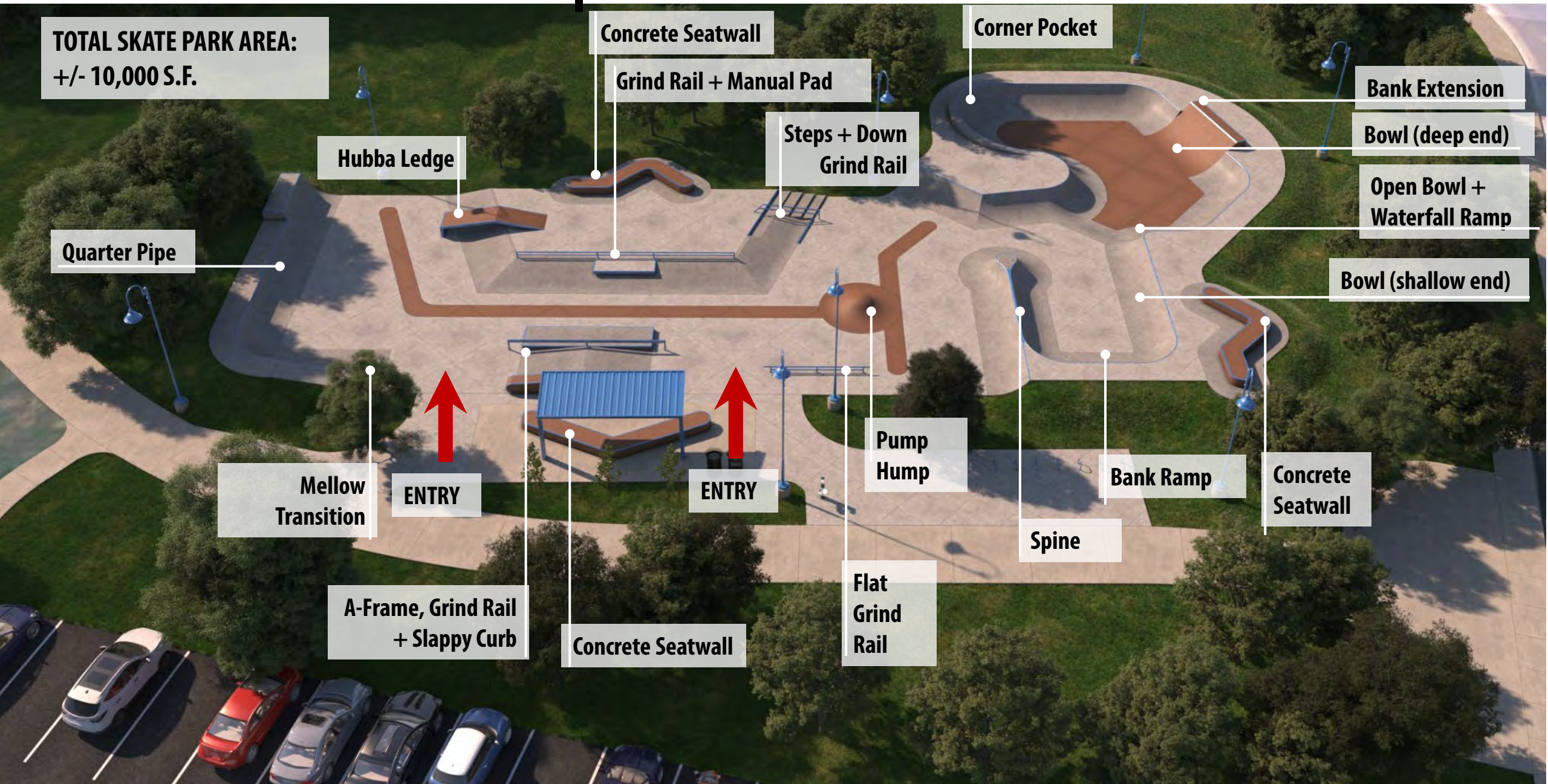
Concrete
Seatwall

A-Frame, Grind Rail
+ Slappy Curb

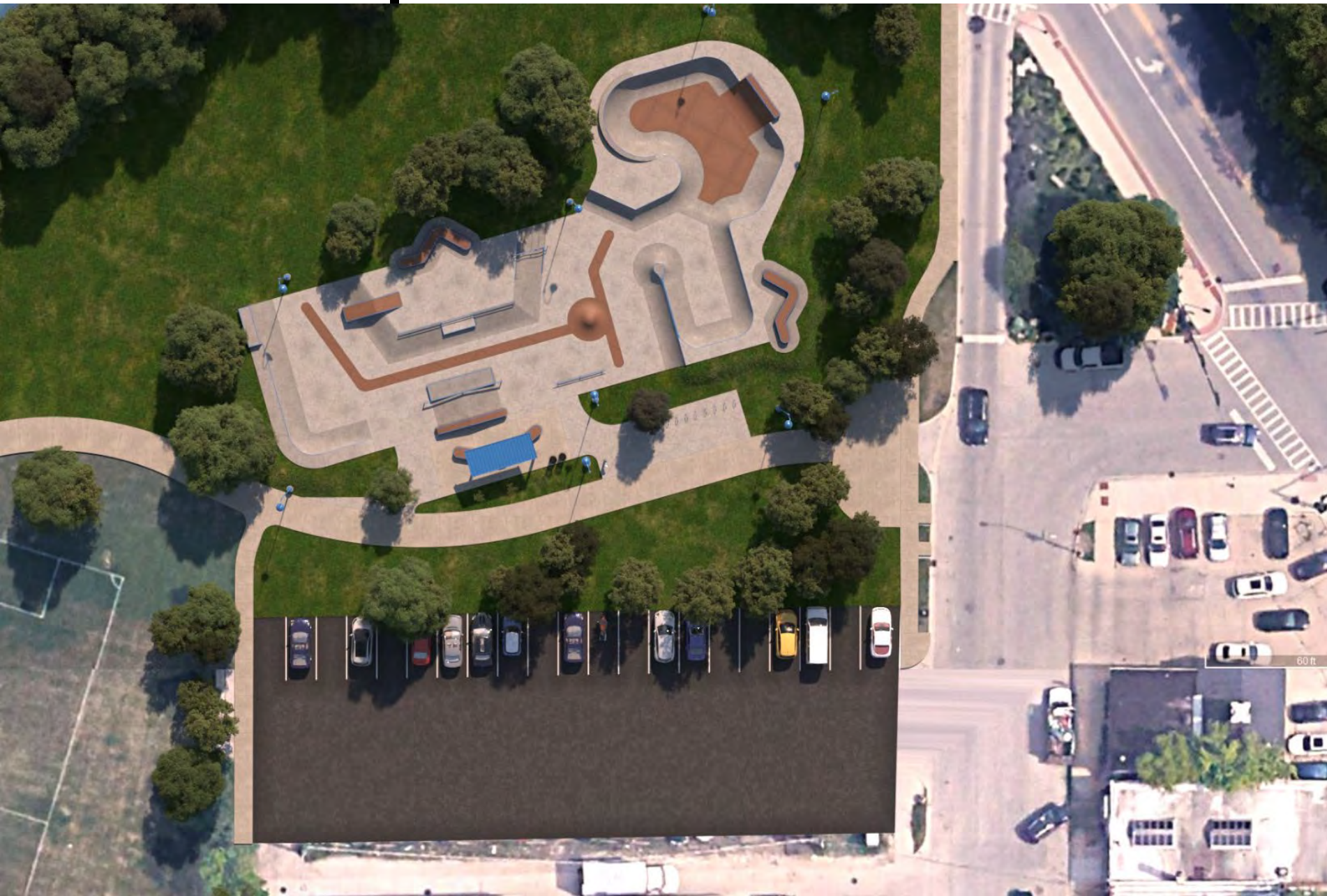
Concrete Seatwall

Flat
Grind
Rail

Spine



CONCEPT C2 | VIEWS



CONCEPT C2 | VIEWS



CONCEPT C2 | VIEWS



CONCEPT C2 | VIEWS



INPUT ACTIVITY | REFINED CONCEPT REVIEW + SELECTIONS

Please log on to:

[MENTI.COM](https://www.menti.com)

Options: use your smart phone, other device, or open a new window

NEXT STEPS | Q+A

Next Steps:

- Design Team Reviews Input with Advisory Group + Prepares (1) Refined Concept
- Public Meeting #5: May 17, 2022
- Stay Tuned to the Project Website for Updates and to email your questions and comments! →



PROJECT
WEBSITE

<https://www.cityofevanston.org/government/departments/public-works/evanston-skate-park>

Please enter your questions + comments into the Zoom Q+A



EVANSTON SKATE PARK

PUBLIC MEETING #4

April 5, 2022 | Public Input Activity

Virtual Sign In Sheet - please add your name

Patrick

Steve

Jim Haberl

Pamela Bailey

Jordan Fischer

Nate

Gabe

mattsnow

Michael Hoff

Virtual Sign In Sheet - please add your name

Hank & Gus

Eric

Ofc. McCray

Jennifer McGuire

Quentin Herzig

Damon wilson

Danny Wagstaff

Aria

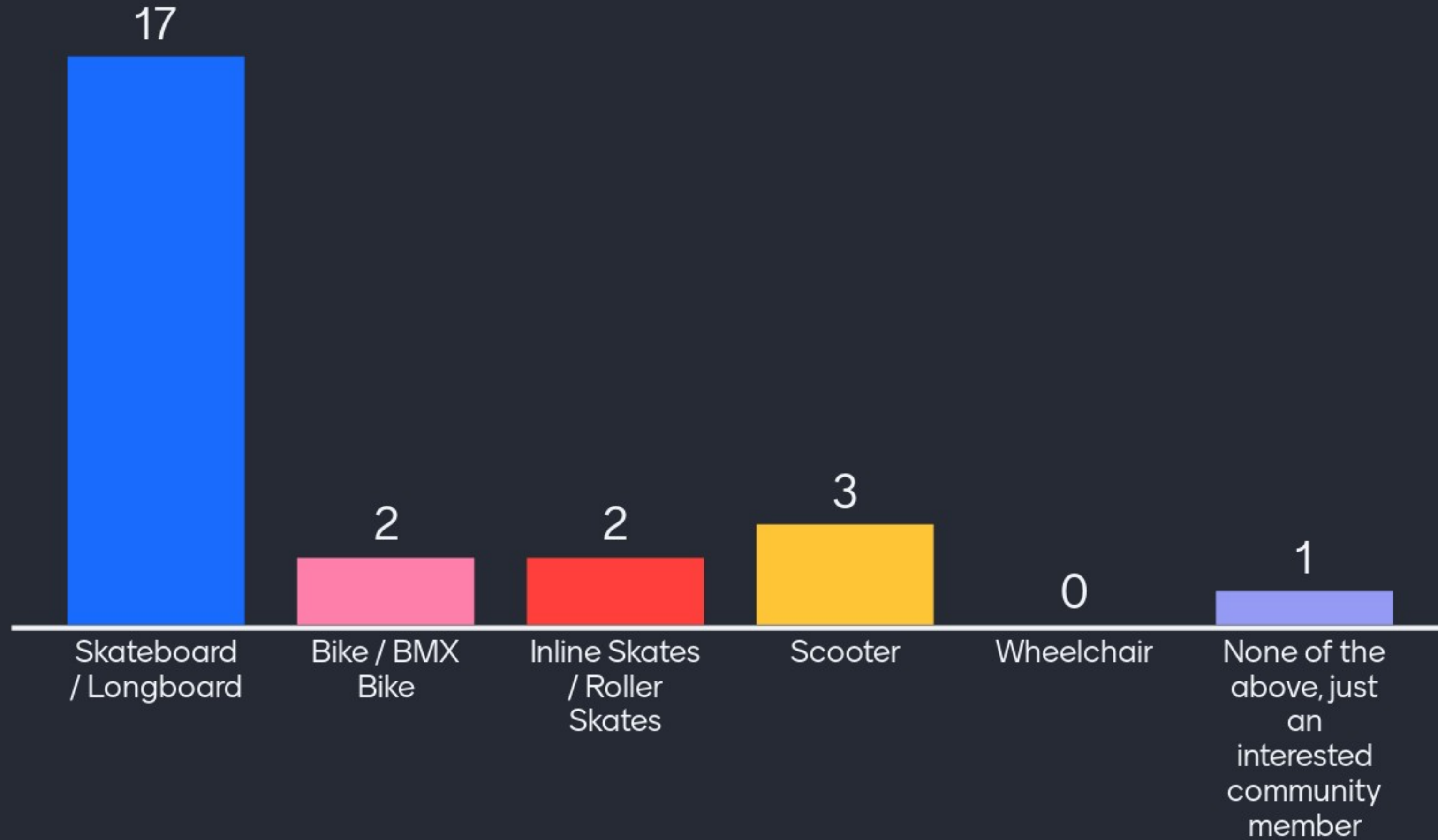
Oliver frigo/Amy gabbert

Virtual Sign In Sheet - please add your name

Juan Carlos Chiwah

dykstra's

What are your wheels of choice?



Please select your preferred BOWL CONCEPT

16



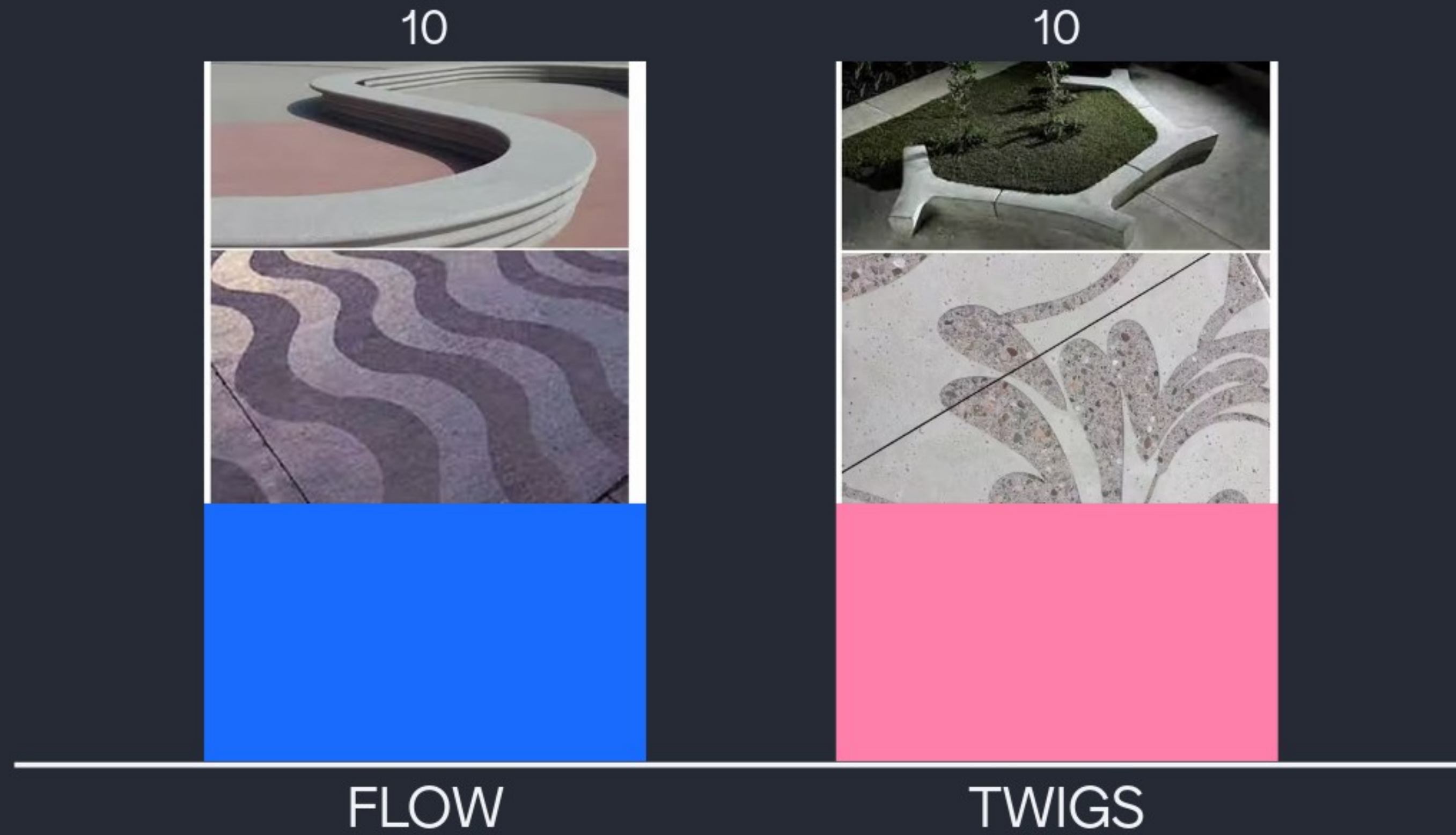
C1: closed bowl
with shallow
bonus area at
north

4

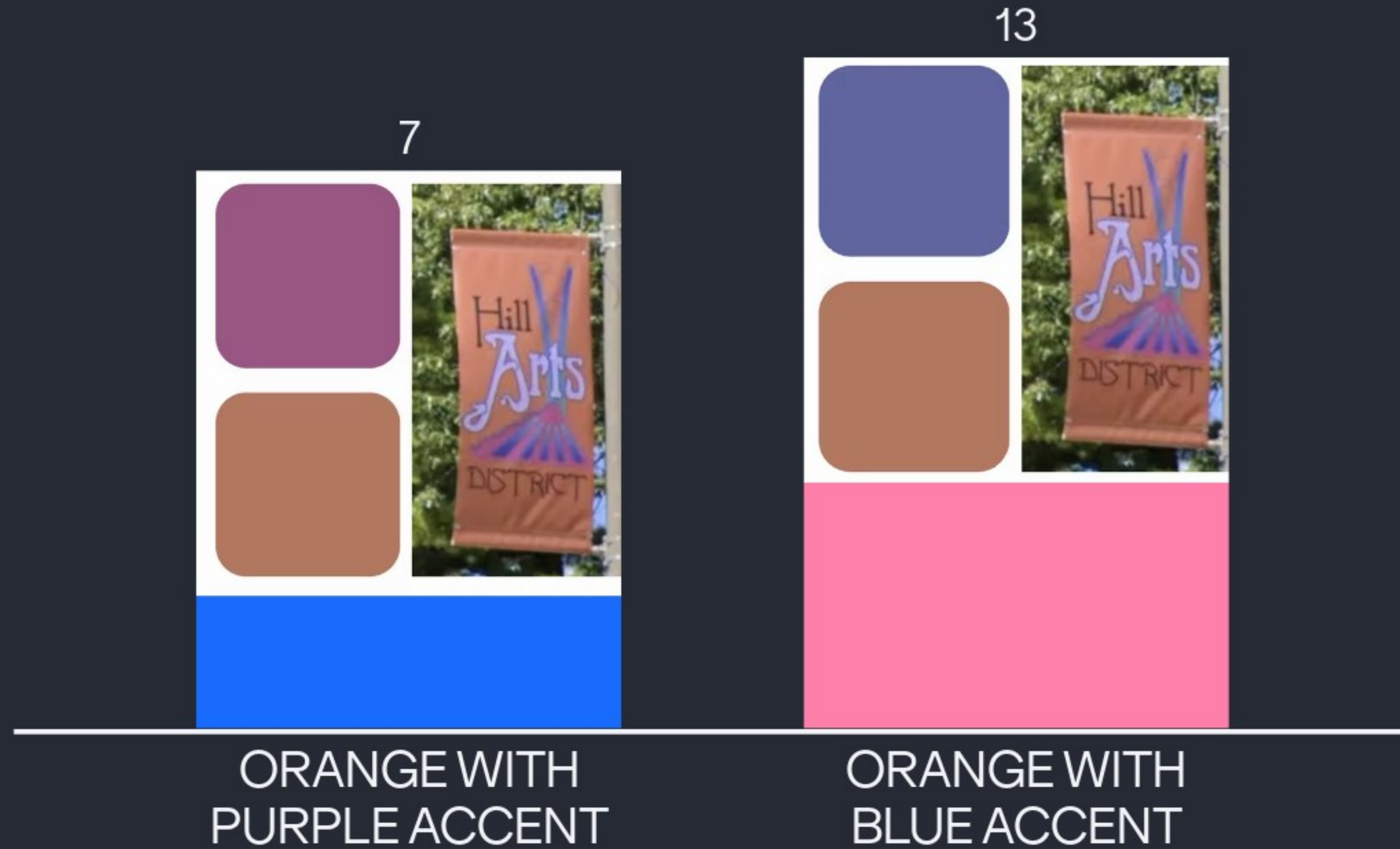


C2: open bowl
with shallow bowl
at south

Please select your preference for IDENTITY FEATURES



Please select your preference for the COLOR PALETTE



As we proceed with finalizing the skate park designs, please share any additional comments here.

None

Maybe add a hip in the bowl?

No roll in! No bowl skaters like roll ins.

awesome designs, vince

I do like the vertical extension that was shown. Please keep that.

Could the bowl still be open in a short part with concept 1

Sharp hip in the bowl!

thank you for all your hard work!

no roll in

As we proceed with finalizing the skate park designs, please share any additional comments here.

If we are truly considering the bowl as a more advanced area, option a makes more sense. No roll in for sure.

I'm unclear on hours- is there adequate lighting for night time skating?

You can Ollie over the roll in!

Make the stairs less long, so they can be skate like actual stairs (like Grant park) rather than super long so its like a gap (like Deerfield). Moving the rollin further in the straight part so it can be gapped and wont be a safety issue for BMX

The updates look FANTASTIC! Thank you! I would like to push for a more traditional grind edge on the manny pad rather than a slap pu curb. Maybe one on each side of the a frame wedges?

Impressive designs, appreciate the collaboration!

Yes! Please have park lights.

No roll in please.

I love the idea of widening the sidewalk along green bay approaching the bridge.

As we proceed with finalizing the skate park designs, please share any additional comments here.

I didn't see in the model but maybe off to the side a mini ramp?

It would be great to ride it well into the night.

Flow of the park (C1) looks good to me!

The weird thing sticking straight up next to the bank at the north doesn't seem like it would be used much and to me does seem to be somewhat of a waste. I think it would be much better to have a hubba or a wallride there (like chase plaza)

A wallride like chase plaza next to the right side of the bank at the north rather than the continued transition/bank

Consider signage to pay respect to original Evanston sk8 team Carl McCalla and the Tom Thumb Skateboard Team. We have pics of Carl riding a bowl in 1979 for example. See Nate Kipnis for more info.

Consider signage that pays respect to not just Twiggs but our pioneering original skater Carl McCall and his teammates on the Tom Thumb Skateboard team. We have vintage pictures available, including Carl riding a bowl in 1979. See Nate Kipnis.

more half pipes for beginners



THANK YOU! Q+A is
up next | please
return to the zoom
window and enter
your questions into
the Zoom Q+A

