

# Evanston COVID-19 Report

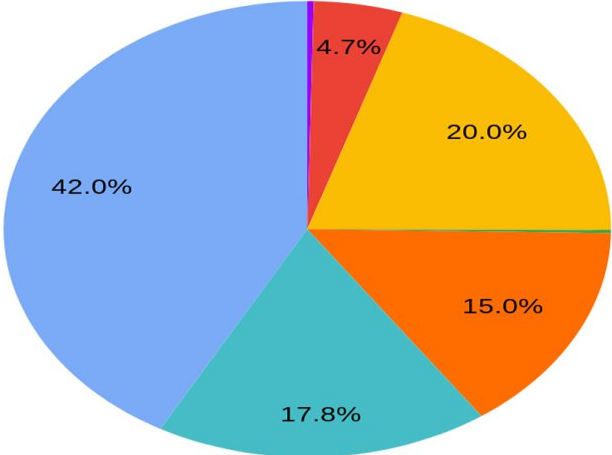
August 9, 2021

# Evanston COVID-19 Summary

KEY METRICS - August 6, 2021			
Cumulative Confirmed Cases	7-Day Average New Cases	7-Day Positivity Rate	Cumulative Deaths
4,766	8.57 cases	2.11%	118

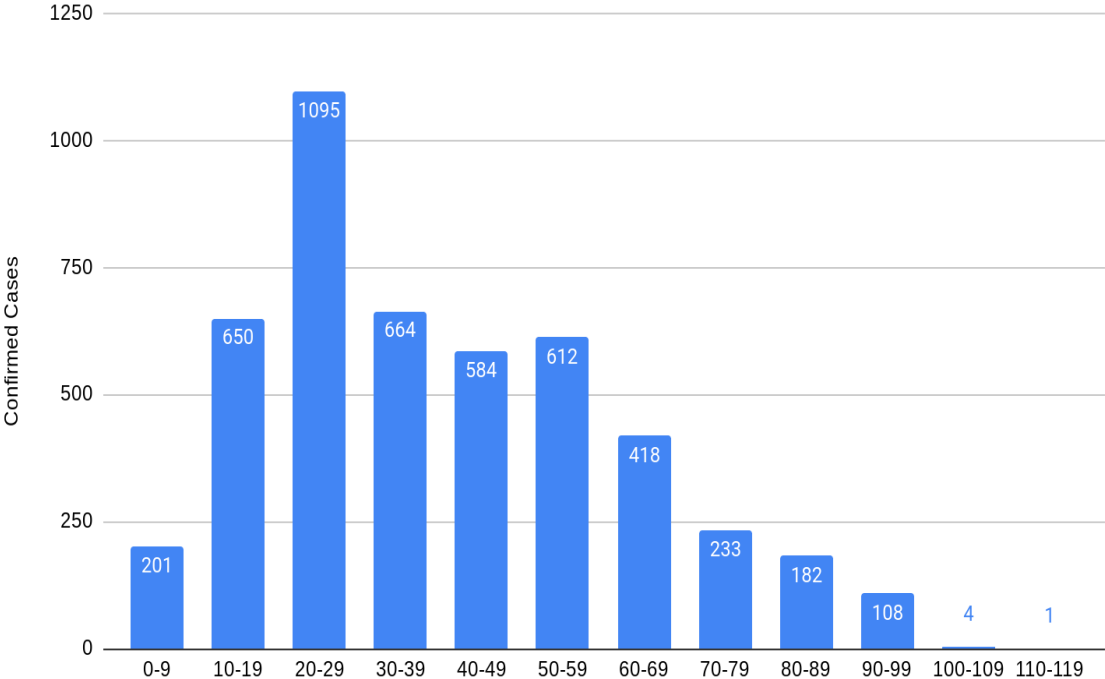
## Cases by Race

- American Indian or Alaskan Native
- Asian
- Black or African American
- Native Hawaiian or Other Pacific Islander
- Other
- Unknown
- White

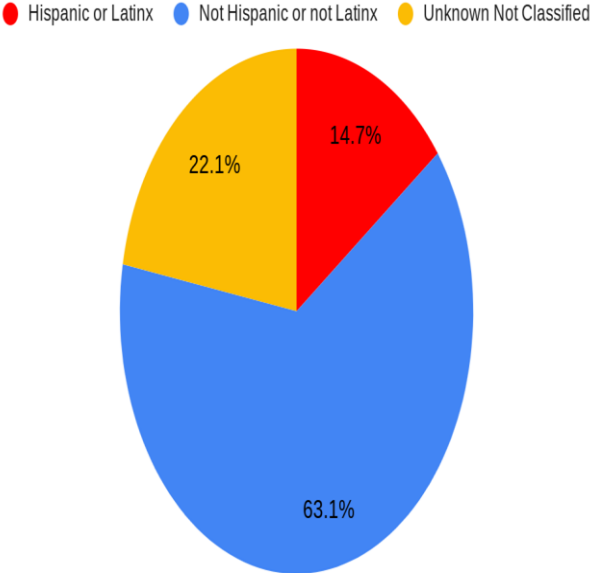


# COVID-19 Cases

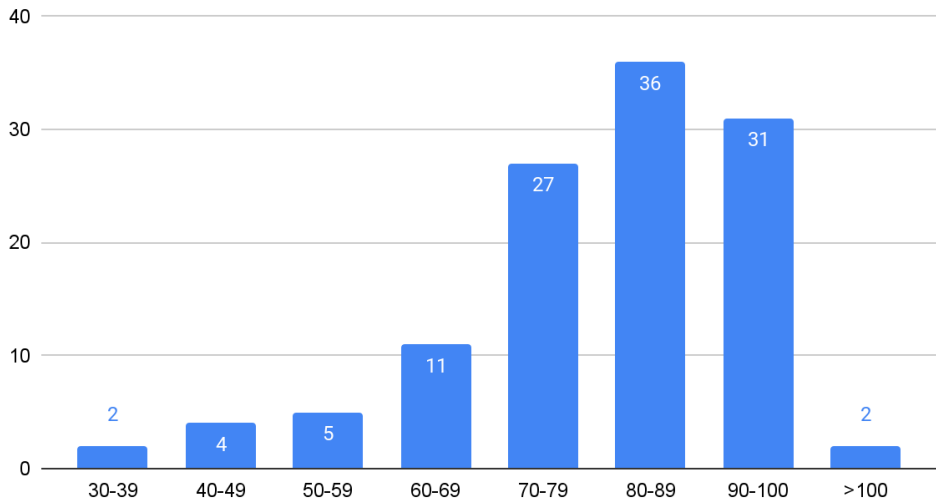
### COVID-19 Cases by Age



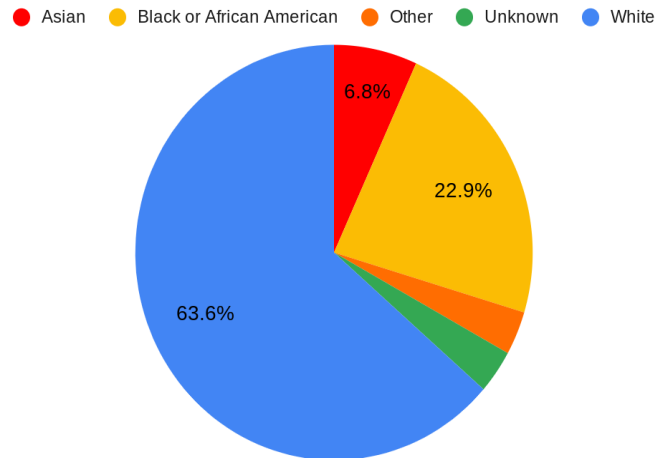
### Cases by Hispanic/Latino Ethnicity



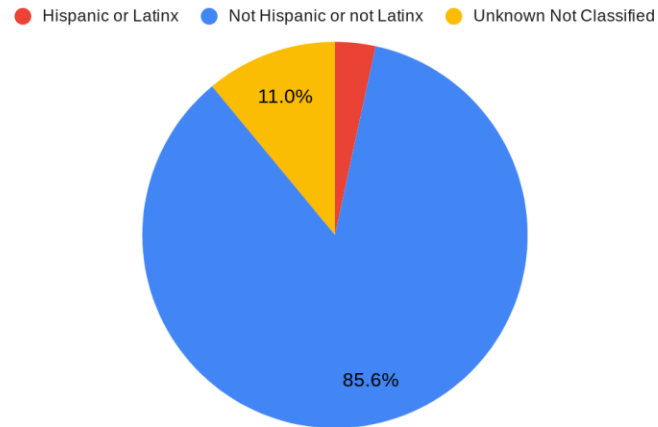
### Deaths by Age



### Deaths by Race



### Deaths by Ethnicity



# Comparative Communities - Skokie, Chicago

Indicator	Evanston	Skokie	Chicago
Confirmed Cases	4,766	6,669	291,588
7-day positivity rate	2.11%	2.21%	3.60%
7-day average daily cases	8.57	10.00	295
Total Deaths	118	136	5,671
Deaths per 10,000 Residents	16.06	21.69	21.05

# COVID-19 Transmission - New Cases per 100,000 People

New Cases Per 100K Residents	
<b>Evanston</b>	<b>81.66</b>
<b>Skokie</b>	<b>111.64</b>
<b>Chicago</b>	<b>91.69</b>

<b>Low Transmission Blue</b>	<b>Moderate Transmission Yellow</b>	<b>Substantial Transmission Orange</b>	<b>High Transmission Red</b>
0-9.99	10-49.99	50-99.99	≥100

Source: [CDC Data Tracker](#)

Evanston and Chicago currently have “substantial” transmission of COVID-19. Skokie currently has “high” transmission.

# Delta Variant in Evanston

- 3 cases of the B.1.617.2 (Delta) variant have recently been detected in Evanston.

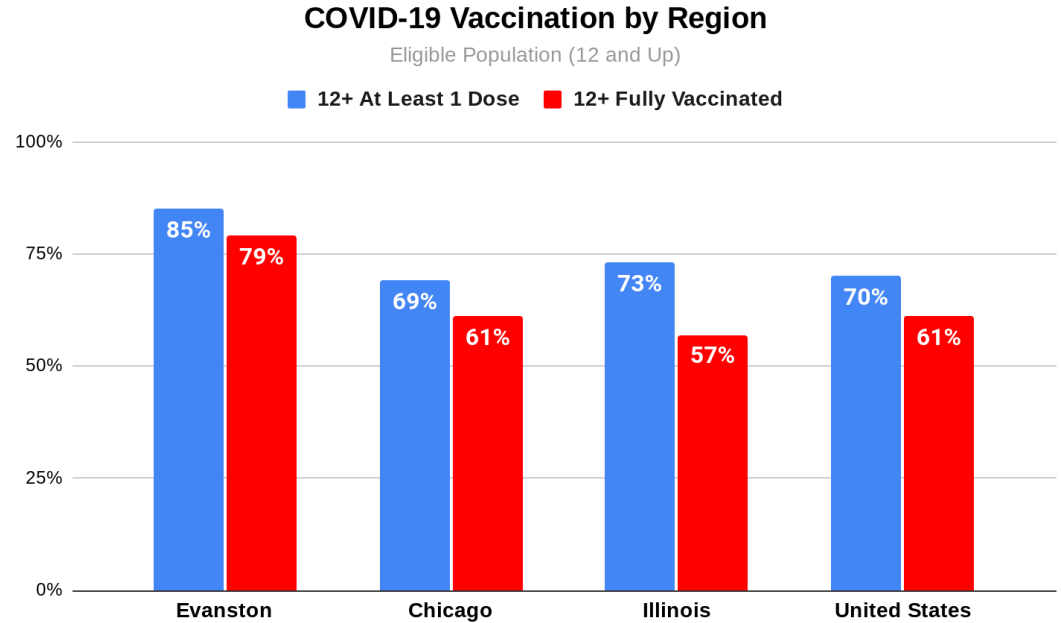
# Mask Guidelines for the Evanston Community

- Individuals over 2 should wear a mask in all public indoor settings, regardless of vaccination status
- Masks continue to be **required**, regardless of vaccination status, in the following settings:
  - K-12 schools
  - City facilities, libraries and community centers
  - Healthcare settings
  - Congregate settings, long term care facilities
  - Public transportation



# Vaccination Rates

- 79% of Evanston residents age 12 and older are fully vaccinated
  - 95% of 65&older population is fully vaccinated
  - By Age - Highest group is 70-79 (100+%), lowest is 20-29 (60%)



Data as of 8/6/21

# Next Steps

- Continue to embark on contact tracing
- Community vaccinations including home-bound vaccinations
- Working with IT to pinpoint areas of low vaccination rates
- Social services e.g food assistance and other forms of assistance
- Continue to maintain situational awareness & timely public health messages
- Continue with onsite visits to at-risk facilities.