

EVANSTON

Skate Park Discussion



May 25, 2021

Agenda

- **Project Background and Need**
- **Steps to Implementation**
- **Public Meeting #1 Summary**
- **Public Survey Results**
- **Temporary Skate Park**
- **Permanent Location**
- **Next Steps**
- **Community Input and Ideas**

Project Background and Need

- **Parking lot east of Old Robert Crown Center formerly had a skate park**
- **Removed around 15 years ago due to equipment failure and never replaced**
- **Currently, skateboarding does not have a designated home in Evanston**
- **Skaters create skating spaces wherever they can invent it**
- **The City recognizes the need to provide this amenity to Evanston's skating community**

Steps to Implementation

Two pronged approach:

- **Construct a temporary skate park (intended to have a 3 to 5 year life) in 2021 to address the need as quickly as possible**
- **Plan for a permanent skate park (intended to have a 20 year life) in 2021 to be constructed in 2022 or beyond as funding becomes available**

Steps to Implementation

Temporary Skate Park Implementation

Funding

- \$50,000 available for construction

Public Engagement

- Review concept design (tonight)

Construction (this summer)

- Purchase and install the equipment

Steps to Implementation

Permanent Skate Park Implementation

Funding

- \$60,000 available for design

Public Engagement

- Review the selected site (tonight)
- Develop conceptual designs (fall 2021)

Construction

- Develop detailed design documents, bid and construct the improvements when funding is available (2022 or beyond)

Public Meeting #1 Summary

- Meeting was held on March 17, 2021
- Around 60+ attendees
- A permanent skate park is preferred in lieu of a temporary skate park
- Surface needs to be very smooth - like a tennis court
- Consider several locations (skate spots) throughout Evanston - build into design of park improvements in general
- Make sure the skate park is large enough - Lincolnwood is too small
- Design needs to appeal to a wide variety of users/skate styles

Public Survey Results

- Survey was available between 3/17/21 and 3/31/21
- 1056 responses
 - 44% from 60201
 - 41% from 60202
 - 15% from outside of Evanston
- 83% of respondents visit Evanston parks on a daily or weekly basis
- Respondent ages:

Under 13: 4%	46 to 55 years: 25%
13 to 18 years: 12%	56 to 65 years: 7%
19 to 25 years: 9%	66 to 75 years: 5%
26 to 35 years: 10%	Over 75 years: 2%
36 to 45 years: 25%	

Public Survey Results

- **55% of respondents skateboard, inline skate, BMX or scooter**
 - **28% are 18 and under**
 - **26% are 19 to 35**
 - **42% are 36 to 55**
 - **4% are over 55**
- **Percentage of each user type**
 - **Skateboarding: 58%**
 - **Inline skater: 17%**
 - **Scooter: 15%**
 - **BMX: 10%**

Public Survey Results

- **Frequency of activity**
 - **Daily or a few times a week: 65%**
- **Skill level**
 - **Beginner: 22%**
 - **Intermediate: 53%**
 - **Advanced: 20%**
 - **Expert: 5%**
- **Non-skater classifications**
 - **Skater/BMXer/Scooter parent or friend: 42%**
 - **Park user at a potential site: 33%**
 - **Adjacent neighbor to potential site: 11%**

Public Survey Results

- **Site Characteristics (important or very important):**
 - **Lighting: 78%**
 - **Restroom: 74%**
 - **Drinking fountain: 69%**
 - **Parking and mass transit: 54%**
 - **Shade: 54%**
 - **Buffer from residential: 35%**
- **Other Characteristics:**
 - **Access to site**
 - **Safety considerations**
 - **Site furniture**

Public Survey Results

- **Concerns**
 - **No concerns: 61%**
 - **Noise: 18%**
 - **Loss of Park Open Space: 13%**
 - **Increased Traffic: 10%**
 - **Damage: 9%**
 - **Loss of Public Parking: 5%**
- **Other Concerns:**
 - **Safety**
 - **Cost**
 - **Proximity to residences**
 - **Undesirable behavior**
- **Respondents that support or strongly support skate park construction**
 - **98% of skaters**
 - **79% of non-skaters**

Public Survey Results

Park Name	Support or Strongly Support	Oppose or Strongly Oppose
Location identified in survey		
James Park	74%	12%
Twiggs Park	63%	16%
Mason Park	62%	13%
Butler Park	58%	16%
Beck Park	56%	15%
Most frequently suggested other sites		
Crown		
Lovelace		
Bent		

Temporary Skate Park

Preferred Location Selection Criteria:

- Site contains a large, relatively flat paved surface in good condition
- Location is not immediately adjacent to residences
- Location limits displacement of existing programming

Design Assumptions

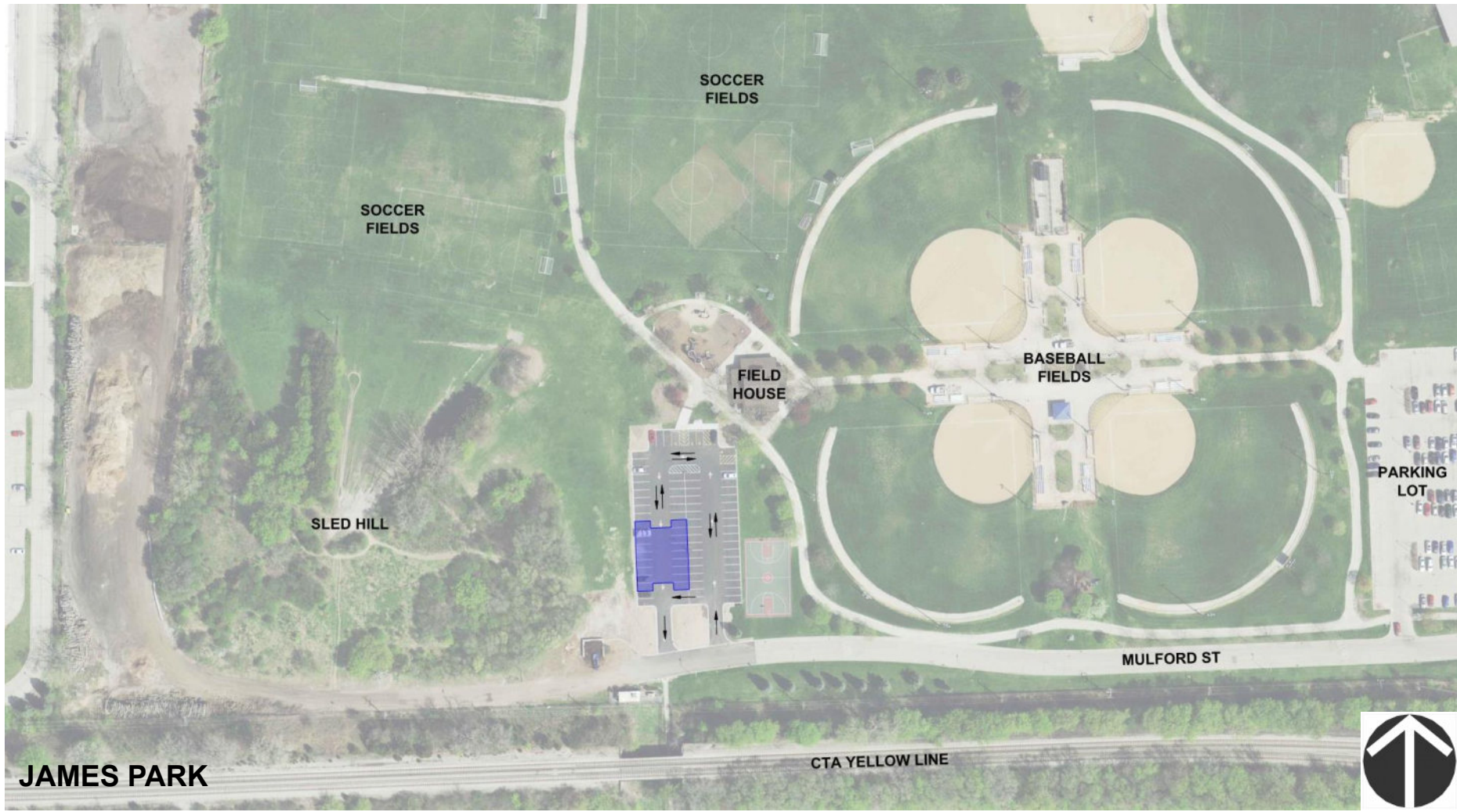
- Skate park will be constructed on top of existing pavement
- Materials are “off the shelf”, prefabricated and likely consist of steel framing and polymer or steel ramp surfaces
- Temporary site will likely be in use for several years

Selected temporary site:

- James Park west parking lot



Temporary Skate Park



Temporary Skate Park



Temporary Skate Park



EQUIPMENT LAYOUT

Equipment

- Quarter Pipe (2)
- Dozer
- Wedge Bank Ramp (2)
- Kinked Grind Rail
- Wedge, Flat, Stair
- Grindbox
- Grind Rail
- Bank Ramp (2)

Materials

- Steel frame
- Painted steel ramps
- Steel rails

Temporary Skate Park

Surfacing:

- Install color coating system over existing parking lot
- Color coating utilizes a multiple application system which fills all cracks and creates a smooth surface
- Expected life of this system should match temporary equipment



Temporary Skate Park

Space Definition:

- Install concrete barriers around the north, south and east perimeters of the site
- Delineate skating space from parking/traffic areas



Permanent Location

Park Name	Support or Strongly Support	Oppose or Strongly Oppose
Location identified in survey		
James Park	74%	12%
Twiggs Park	63%	16%
Mason Park	62%	13%
Butler Park	58%	16%
Beck Park	56%	15%
Most frequently suggested other sites		
Crown		
Lovelace		
Bent		

Permanent Location

Park Name	Support or Strongly Support	Oppose or Strongly Oppose	
Location identified in survey			
James Park	74%	12%	Conflicts with existing programming
Twiggs Park	63%	16%	
Mason Park	62%	13%	Property not currently available (may be considered for a second location in the future)
Butler Park	58%	16%	Too close to residences
Beek Park	56%	15%	Too close to residences
Most frequently suggested other sites			
Crown			Park is intensely programmed already
Lovelace			Limited space available
Bent			Too close to residences and limited space available

Permanent Location

Design Assumptions

- Construction will likely be in ground cast in place concrete or above ground precast concrete
- Intended useful life will be 20 years or more
- Specific design characteristics will be developed with the community

Permanent Site Selected

- Twiggs Park



Permanent Location



Twigg Park

Next Steps

Temporary Skate Park

- Procure materials/services for installation
- Build the temporary improvement

Permanent Skate Park

- Procure design services from a consultant team
- Conduct additional public engagements to develop the design

Community Input and Ideas