

# EVANSTON

## Skate Park Discussion



March 17, 2021

# Agenda

- **Project Background and Need**
- **Steps to Implementation**
- **Temporary Skate Park**
- **Potential Permanent Locations**
- **Community Input and Ideas**
- **Next Steps**

# Project Background and Need

- **Parking lot east of Old Robert Crown Center formerly had a skate park**
- **Removed around 19 years ago due to equipment failure and never replaced**
- **Currently, skateboarding does not have a designated home in Evanston**
- **Skaters create skating spaces wherever they can invent it**
- **The City recognizes the need to provide this amenity to Evanston's skating community**

# Steps to Implementation

Two pronged approach:

- **Construct a temporary skate park (intended to have a 3 to 5 year life) in 2021 to address the need as quickly as possible**
- **Plan for a permanent skate park (intended to have a 20 year life) in 2021 to be constructed in 2022 or beyond as funding becomes available**

# Steps to Implementation

## Temporary Skate Park Implementation

### Funding

- \$50,000 available for construction

### Public Engagement (tonight)

- Review the selected site
- Review/discuss potential skating features

### Construction (this summer)

- Purchase and install the equipment

# Steps to Implementation

## Permanent Skate Park Implementation

### Funding

- \$60,000 available for design

### Public Engagement

- Evaluate and select a site (spring/summer 2021)
- Develop conceptual designs (fall 2021)

### Construction

- Develop detailed design documents, bid and construct the improvements when funding is available (2022 or beyond)

# Temporary Skate Park

## Preferred Location Selection Criteria:

- Site contains a large, relatively flat paved surface in good condition
- Location is not immediately adjacent to residences
- Location limits displacement of existing programming

## Design Assumptions

- Skate park will be constructed on top of existing pavement
- Materials are “off the shelf”, prefabricated and likely consist of steel framing and polymer ramp surfaces
- Temporary site will likely be in use for several years

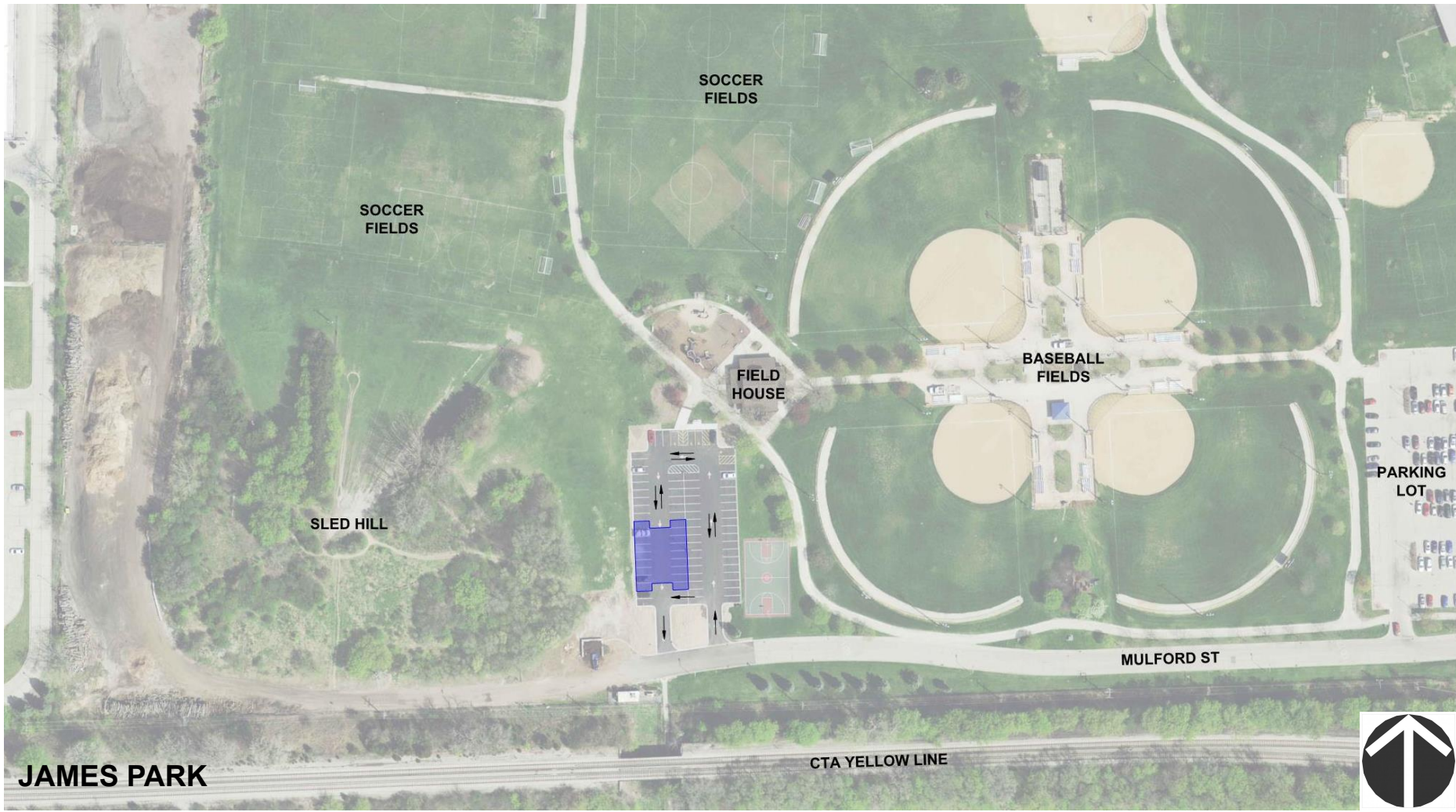
## Selected temporary site:

- James Park west parking lot





# Temporary Skate Park

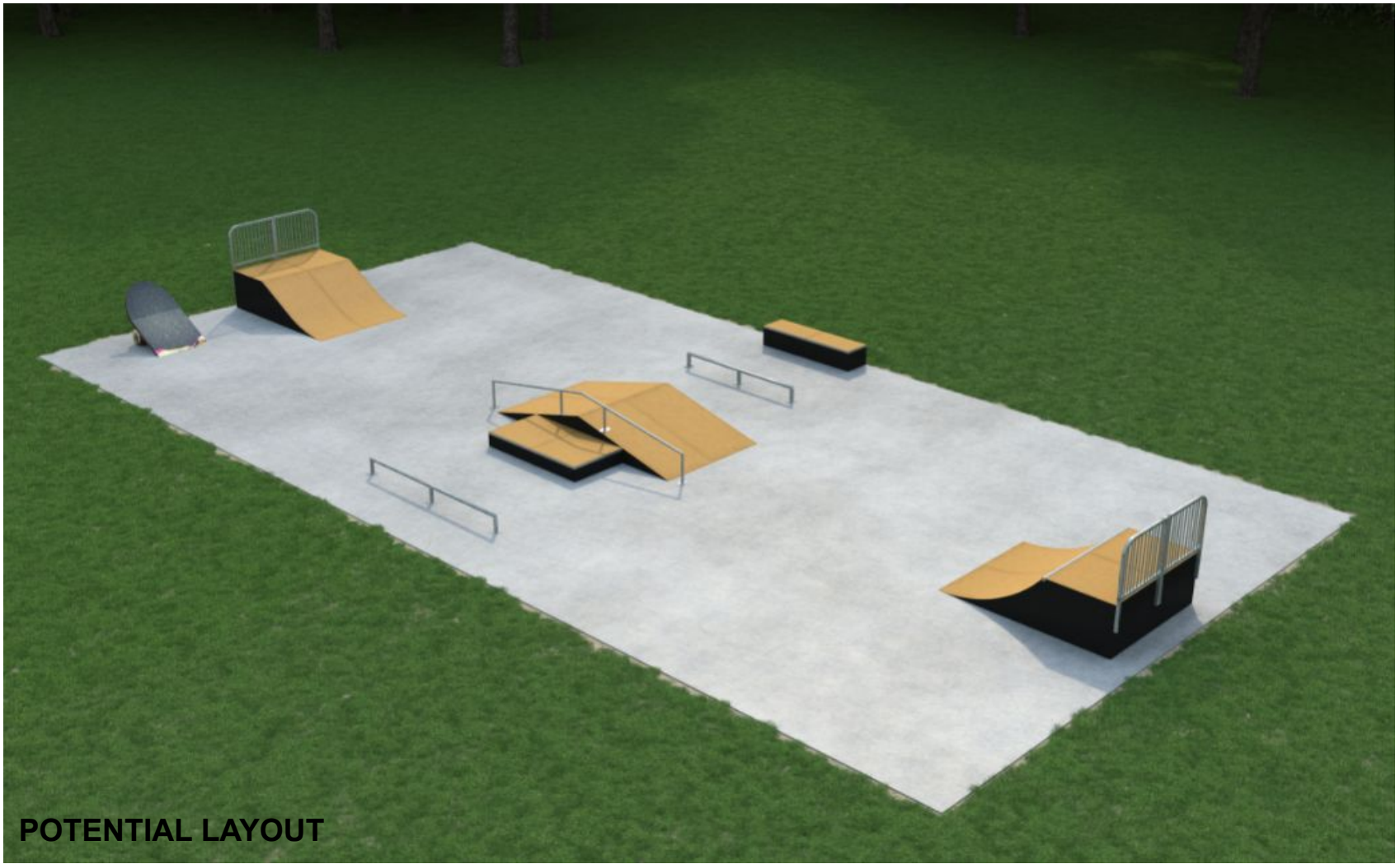




# Temporary Skate Park



# Temporary Skate Park





# Temporary Skate Park



# Temporary Skate Park

## Preferred features

- Half pipes
- Quarter pipes
- Ramps
- Rails
- Other?



# Permanent Skate Park

## Location Selection Criteria:

- Existing programming displacements (if any) can be accommodated
- Location is not immediately adjacent to residences

## Design Assumptions

- Construction will likely be in ground cast in place concrete or above ground precast concrete
- Intended useful life will be 20 years or more
- Specific design characteristics will be developed with the community

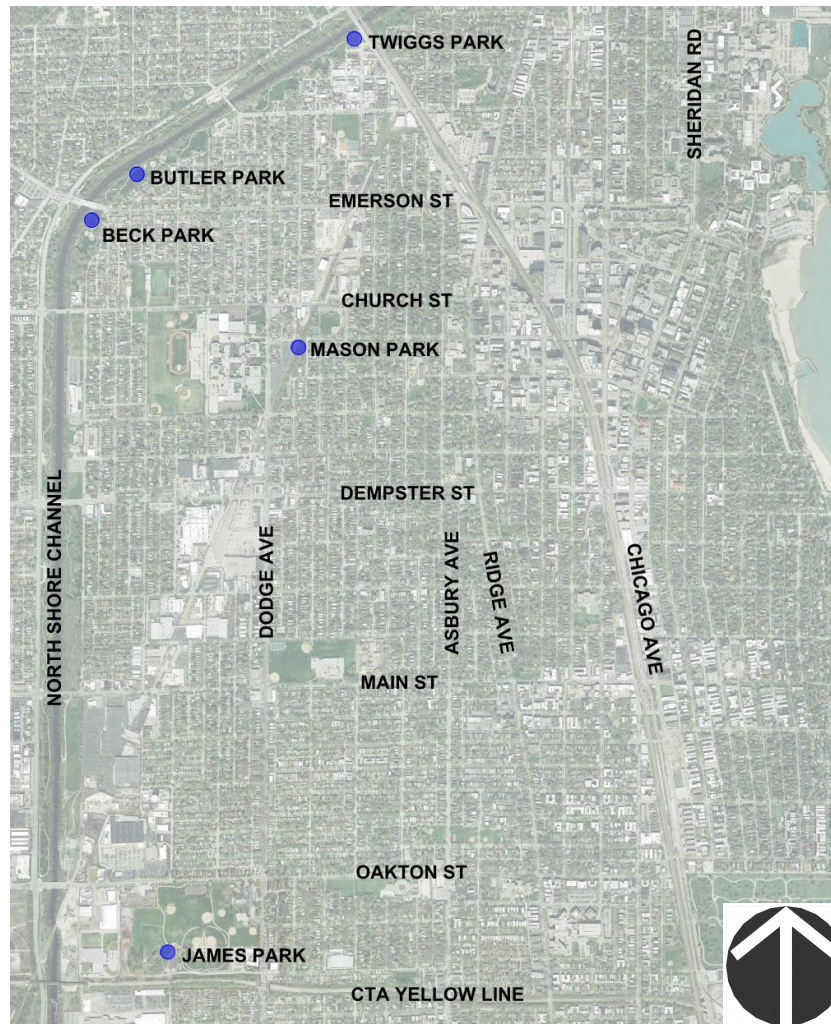
## Potential Permanent Sites for Discussion

- Beck Park
- Butler Park
- James Park
- Mason Park
- Twiggs Park





# Potential Permanent Locations



# Potential Permanent Locations



**Beck Park**

## Benefits

- Installation is adjacent to an existing playground
- Utilizes unprogrammed park area
- Restroom available at south end of park

## Challenges

- No off-street parking available
- Relatively close to residences



# Potential Permanent Locations



**Butler Park**

## Benefits

- Installation is adjacent to an existing playground
- Utilizes unprogrammed park area

## Challenges

- No off-street parking available
- No nearby restrooms
- Relatively close to residences

# Potential Permanent Locations



**James Park**

## Benefits

- Installation is adjacent to an existing playground
- Existing restroom is nearby
- Off street parking available
- Not near residential properties

## Challenges

- Competing park uses



# Potential Permanent Locations



**Mason Park**

## Benefits

- Opportunity to expand park
- Near high school
- Restrooms available at northeast corner of park

## Challenges

- Requires property acquisition and additional funding for park development
- No off street parking available
- Relatively close to residences

# Potential Permanent Locations



**Twigg Park**

## Benefits

- Utilizes unprogrammed park area
- Off street parking available
- Not near residential properties

## Challenges

- No nearby restrooms (could be added in future)

# Community Input and Ideas

# Next Steps

- Please visit the project's [webpage](#) and take our [survey](#) before April 1, 2021 to help us learn more about the community's needs and gain input on a permanent site.
- Join us at our next public meeting tentatively scheduled on April 21, 2021 at 5:30 P.M. to review survey results and continue discussion regarding a permanent site.