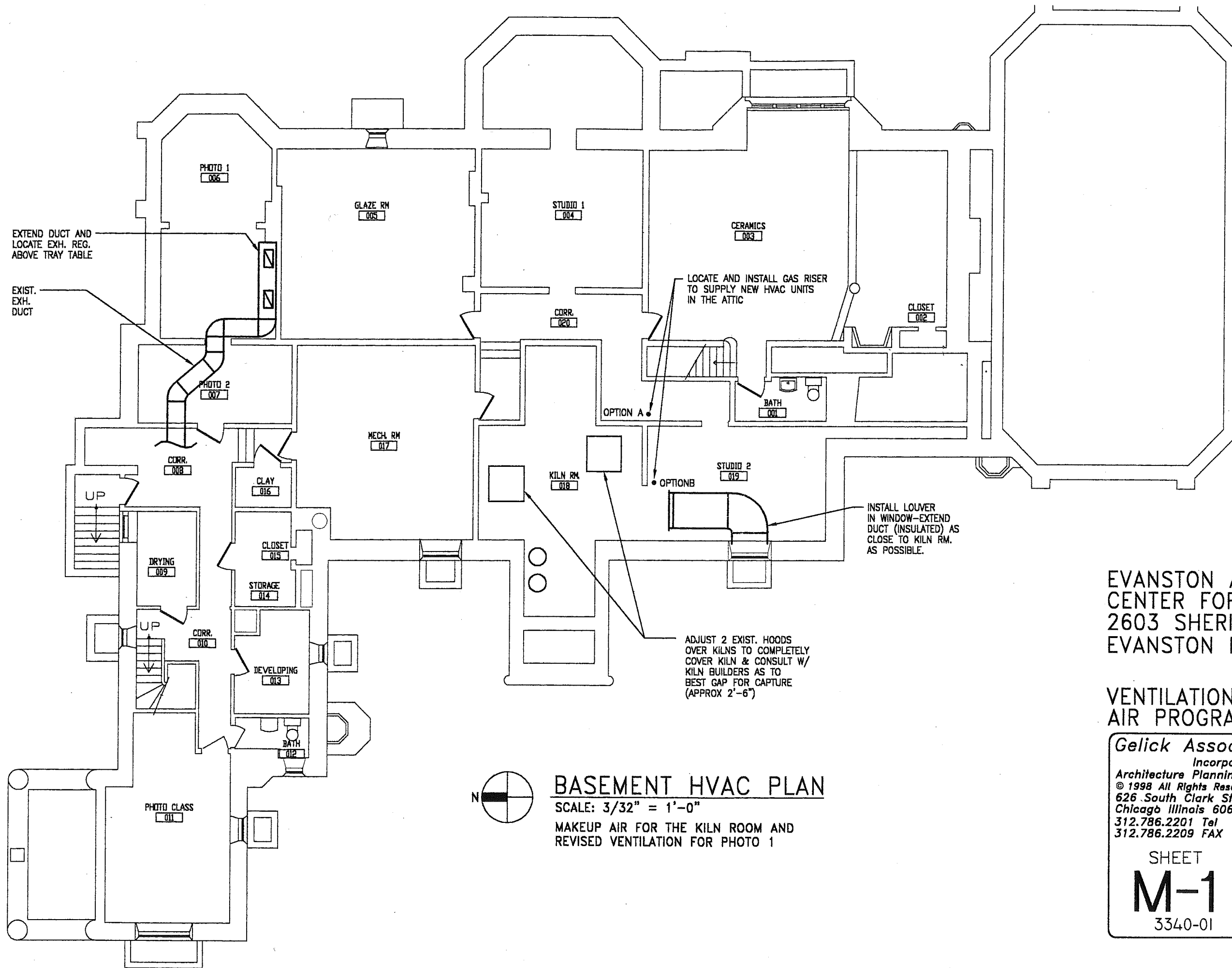
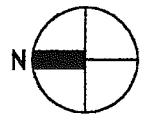


HARLEY CLARKE  
MANSION FLOORPLANS



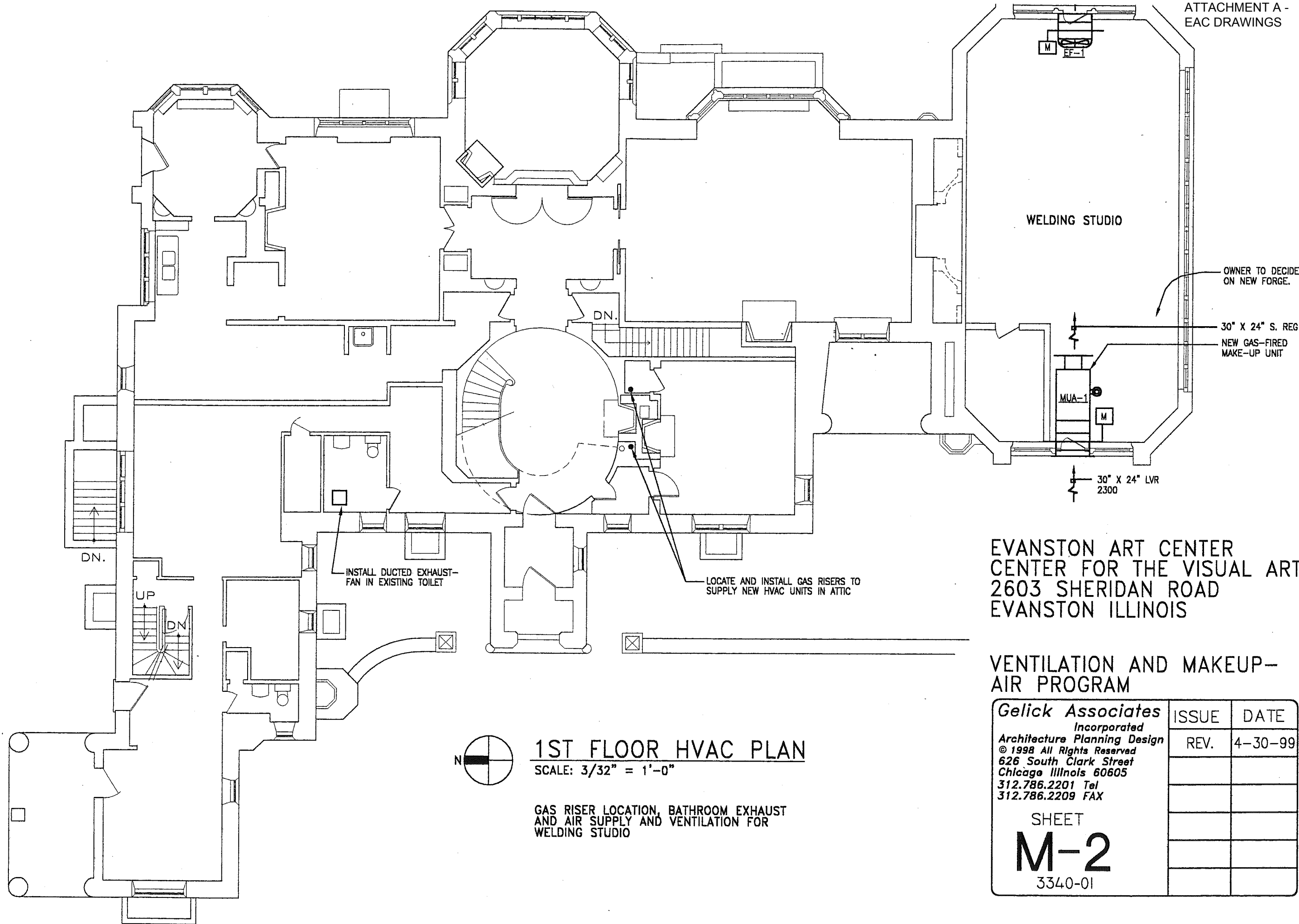
EVANSTON ART CENTER  
CENTER FOR THE VISUAL ARTS  
2603 SHERIDAN ROAD  
EVANSTON ILLINOIS

VENTILATION AND MAKEUP-  
AIR PROGRAM



**BASEMENT HVAC PLAN**  
SCALE: 3/32" = 1'-0"  
MAKEUP AIR FOR THE KILN ROOM AND  
REVISED VENTILATION FOR PHOTO 1

<b>Gelick Associates</b> <i>Incorporated</i> Architecture Planning Design © 1998 All Rights Reserved 626 South Clark Street Chicago Illinois 60605 312.786.2201 Tel 312.786.2209 FAX	ISSUE	DATE
	REV.	4-30-99
SHEET <b>M-1</b> 3340-01		



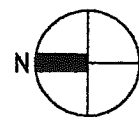
EVANSTON ART CENTER  
CENTER FOR THE VISUAL ARTS  
2603 SHERIDAN ROAD  
EVANSTON ILLINOIS

VENTILATION AND MAKEUP-AIR PROGRAM

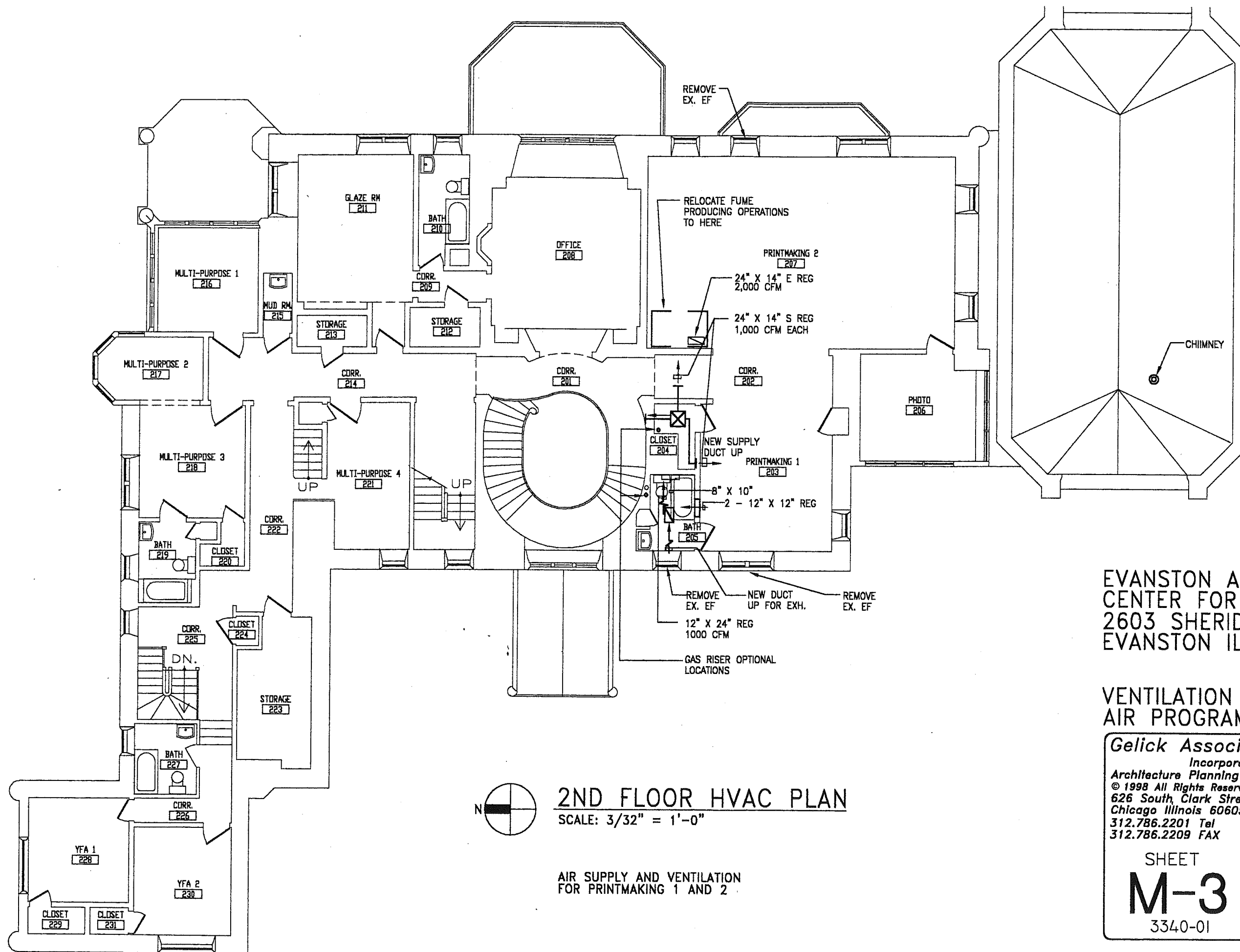
<p><i>Gelick Associates</i> Incorporated Architecture Planning Design © 1998 All Rights Reserved 626 South Clark Street Chicago Illinois 60605 312.786.2201 Tel 312.786.2209 FAX</p>	ISSUE	DATE
	REV.	4-30-99
SHEET		
<b>M-2</b>		
3340-01		

**1ST FLOOR HVAC PLAN**

SCALE: 3/32" = 1'-0"



GAS RISER LOCATION, BATHROOM EXHAUST  
AND AIR SUPPLY AND VENTILATION FOR  
WELDING STUDIO



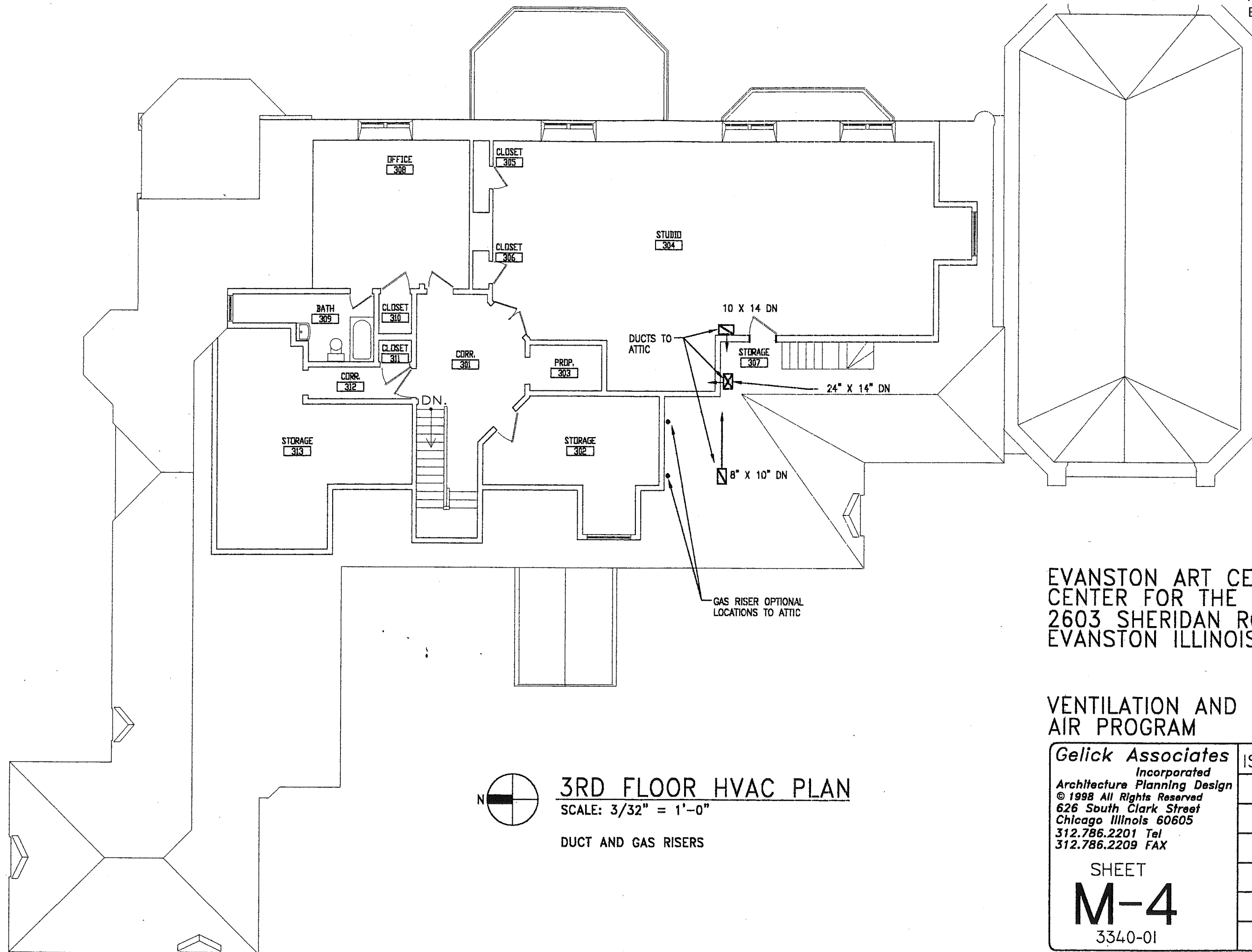
**2ND FLOOR HVAC PLAN**  
SCALE: 3/32" = 1'-0"

AIR SUPPLY AND VENTILATION  
FOR PRINTMAKING 1 AND 2

EVANSTON ART CENTER  
CENTER FOR THE VISUAL ARTS  
2603 SHERIDAN ROAD  
EVANSTON ILLINOIS

**VENTILATION AND MAKEUP-AIR PROGRAM**

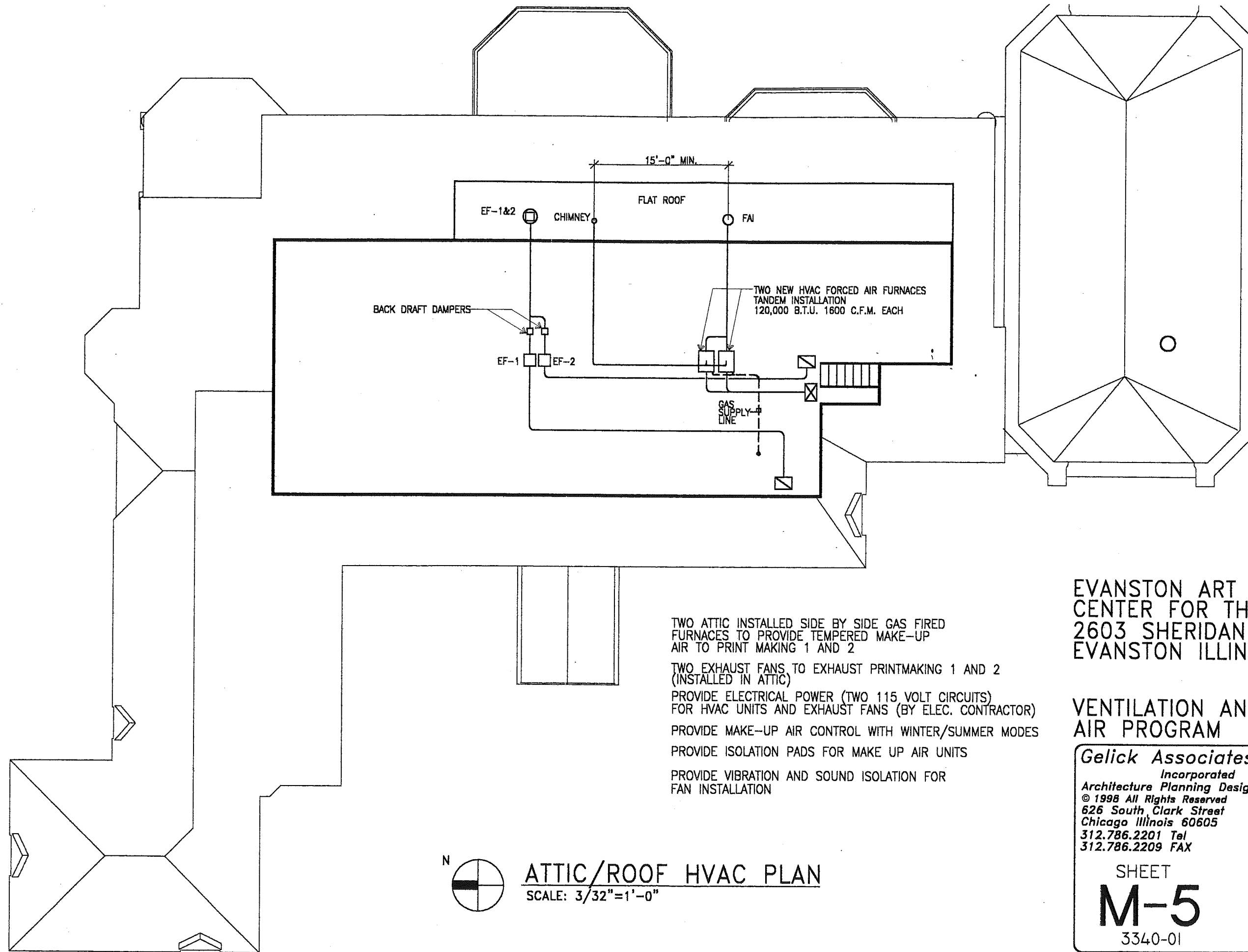
<p><b>Gelick Associates</b> Incorporated Architecture Planning Design © 1998 All Rights Reserved 626 South Clark Street Chicago Illinois 60605 312.786.2201 Tel 312.786.2209 FAX</p> <p>SHEET <b>M-3</b> 3340-01</p>	ISSUE	DATE
	REV.	4-30-99



EVANSTON ART CENTER  
CENTER FOR THE VISUAL ARTS  
2603 SHERIDAN ROAD  
EVANSTON ILLINOIS

VENTILATION AND MAKEUP-AIR PROGRAM

<p><b>Gelick Associates</b> Incorporated Architecture Planning Design © 1998 All Rights Reserved 626 South Clark Street Chicago Illinois 60605 312.786.2201 Tel 312.786.2209 FAX</p> <p>SHEET <b>M-4</b> 3340-01</p>	ISSUE	DATE
	REV.	4-30-99



TWO ATTIC INSTALLED SIDE BY SIDE GAS FIRED FURNACES TO PROVIDE TEMPERED MAKE-UP AIR TO PRINT MAKING 1 AND 2

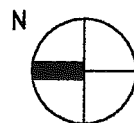
TWO EXHAUST FANS TO EXHAUST PRINTMAKING 1 AND 2 (INSTALLED IN ATTIC)

PROVIDE ELECTRICAL POWER (TWO 115 VOLT CIRCUITS) FOR HVAC UNITS AND EXHAUST FANS (BY ELEC. CONTRACTOR)

PROVIDE MAKE-UP AIR CONTROL WITH WINTER/SUMMER MODES

PROVIDE ISOLATION PADS FOR MAKE UP AIR UNITS

PROVIDE VIBRATION AND SOUND ISOLATION FOR FAN INSTALLATION



**ATTIC/ROOF HVAC PLAN**  
SCALE: 3/32"=1'-0"

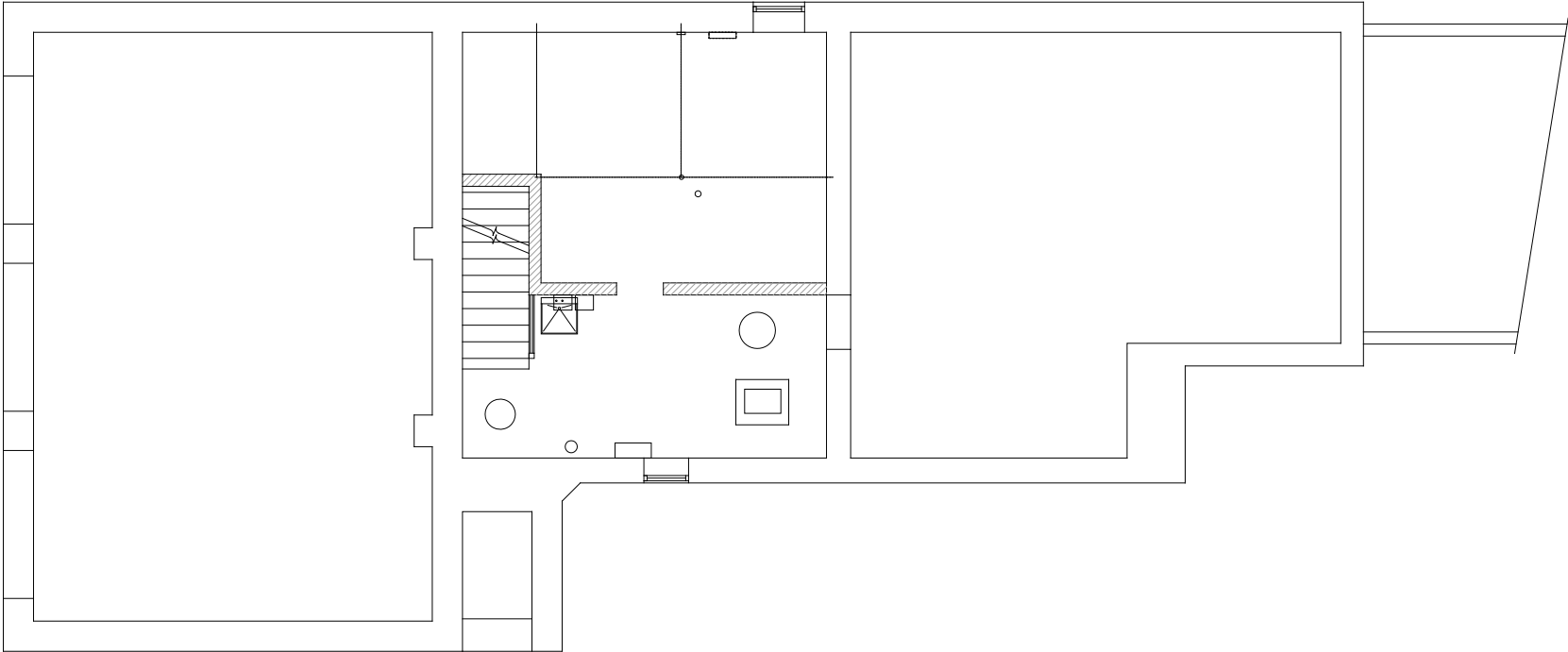
EVANSTON ART CENTER  
CENTER FOR THE VISUAL ARTS  
2603 SHERIDAN ROAD  
EVANSTON ILLINOIS

**VENTILATION AND MAKEUP-AIR PROGRAM**

<p><b>Gelick Associates</b> <i>Incorporated</i> Architecture Planning Design © 1998 All Rights Reserved 626 South Clark Street Chicago Illinois 60605 312.786.2201 Tel 312.786.2209 FAX</p> <p>SHEET <b>M-5</b> 3340-01</p>	ISSUE	DATE
	REV.	4-30-99

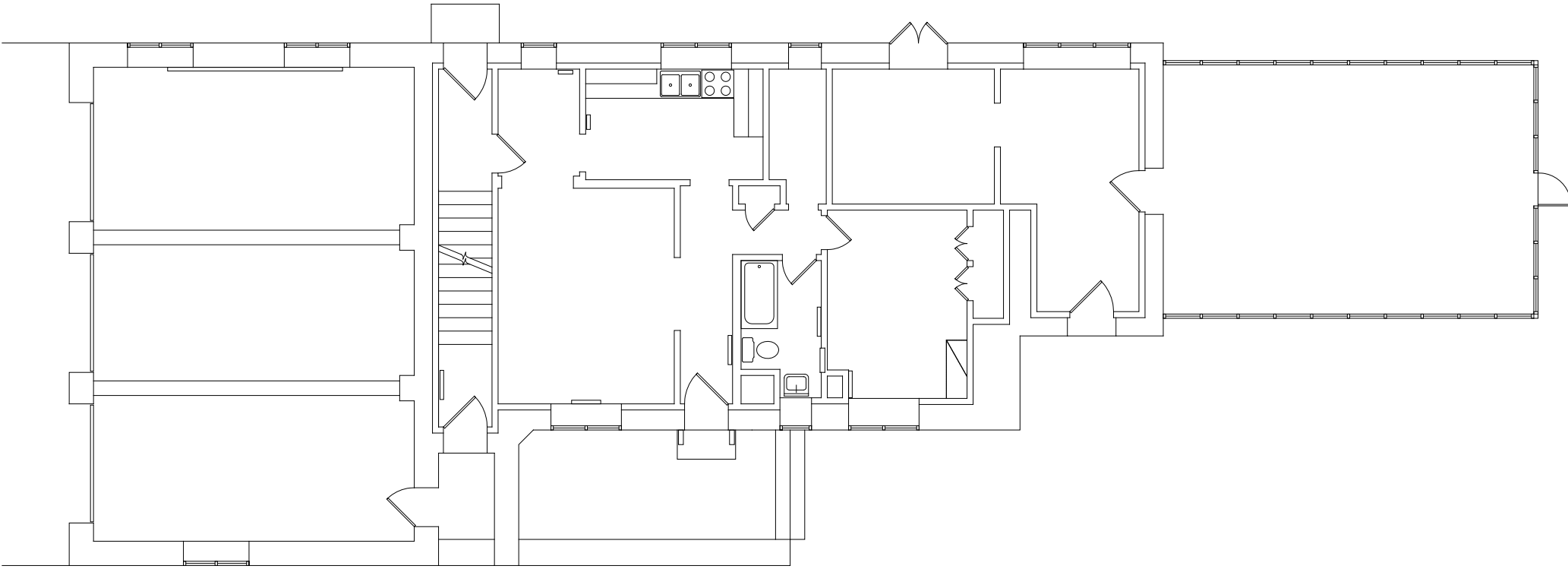
# COACH HOUSE FLOORPLANS

# BASEMENT EXISTING

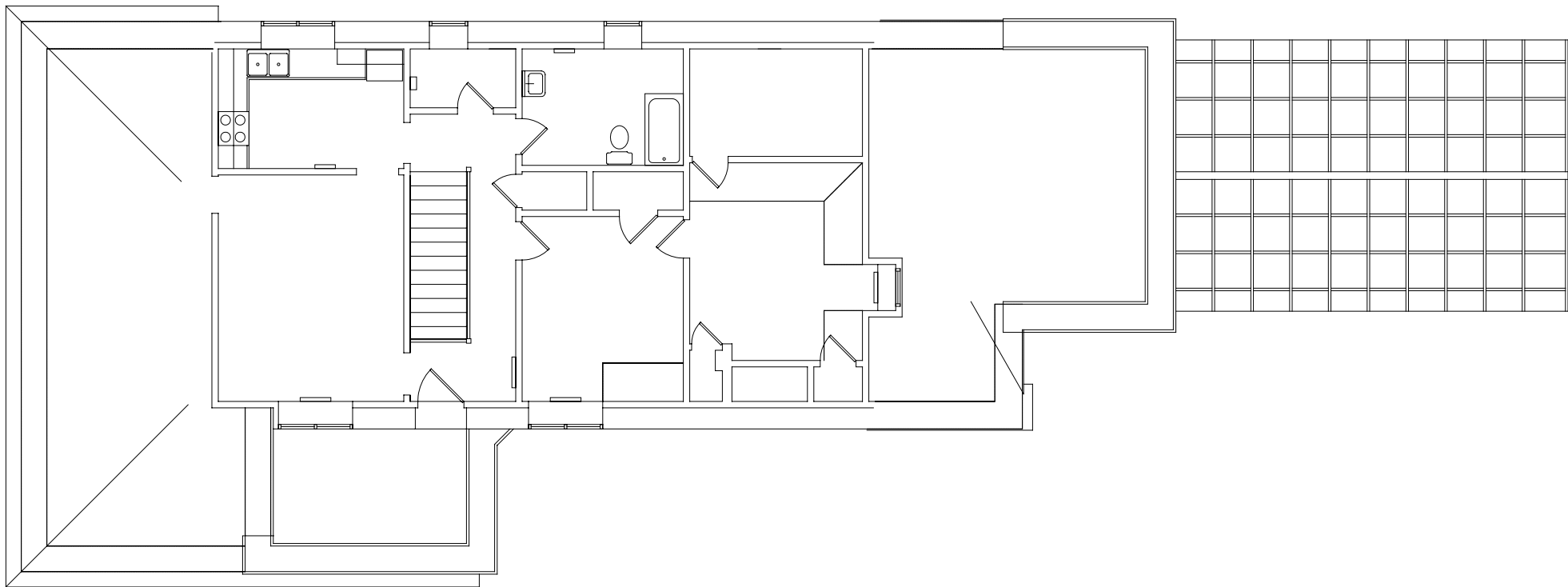


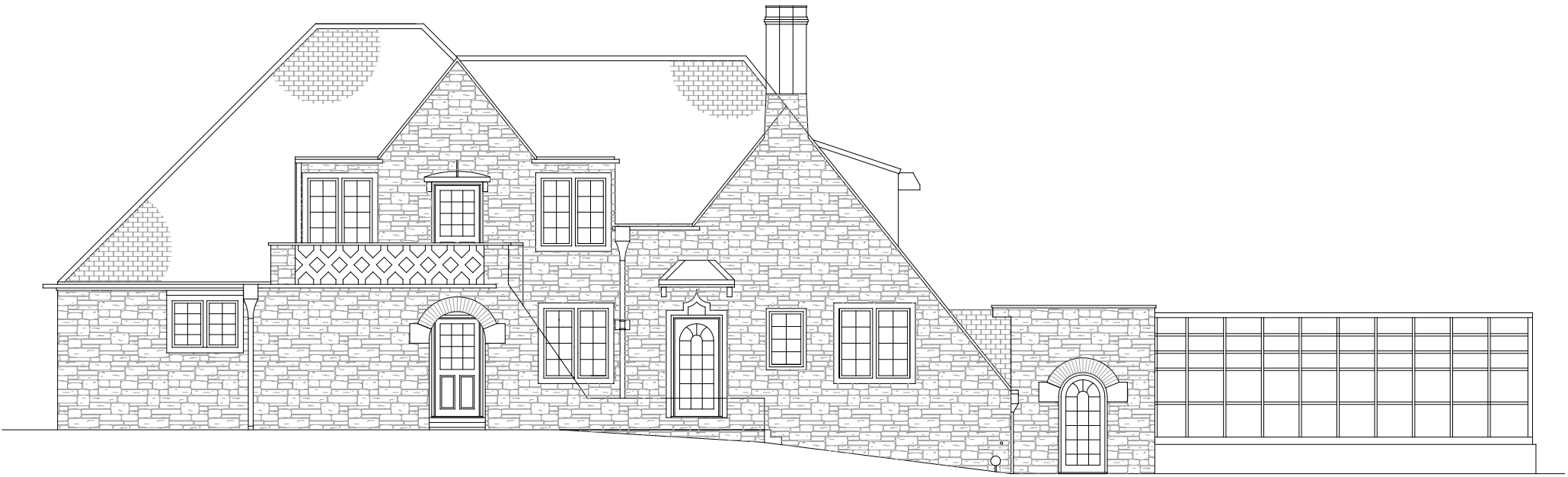


# 1st FLOOR EXISTING



# 2nd FLOOR EXISTING





**NORTH ELEVATION**



**SOUTH ELEVATION**



**WEST ELEVATION**



**EAST ELEVATION**

# JENS JANSEN GARDEN

## THE ORIGINAL PLANS

The original plans for the Harley Clarke Estate, completed by Richard Powers in 1926, and those for the Estate grounds, completed by Jens Jensen in 1928, were obtained and used as reference materials in developing the plans and recommendations. No plans for the Lighthouse complex or the Nature Center building were obtainable from the U. S. Coast Guard.

The Jensen plans, discovered in the archives of the University of Michigan Library, are the originals, and represent a unique opportunity to identify both the palette of materials used by Jensen and his design concepts. The Jensen plans consist of two drawings - a planting plan (see Figure A-1) and a watering system plan. (See Figure A-2). The Powers plans are blueprints, also found in the Archives of the University of Michigan Libraries. They consist of two drawings - a working plot plan (see Figure A-3) and a preliminary ground plan. (See Figure A-4).

The Jensen plans provide numerous valuable insights. Chief among these is the palette of plant materials he prescribed for the site. It is important to recall something of Jensen's working manner in reviewing this listing. Although he specifies a long listing of plants for use in different areas, it is not likely that he would actually use each of these. In normal procedure, he would direct and selection placement on the site, and thus use some and not others. The chief value of the listing is that the plants on the list are compatible, and can be used as a shopping list for today's replacement. Unfortunately, some of the native varieties he specifies are not readily available today.

Several elements of Jensen's overall design should be noted. The great lawn, in front of the house, places the home far back in a canopied setting, with the softer understory providing a filtering screen. Attention is focused on the entry. The plantings around the great house screen it from view, and totally screen the auto parking area. The entry drive is flanked by elms, with an understory of dogwoods and native shrubs.

The rear yard lawns are totally private spaces, as typified by the cover of this report. Filtered views of the lake are provided from each of the main windows of the home. Access down to the beach is channeled along stepped pathways, while the dense rose hedge prevents casual access.





A-3

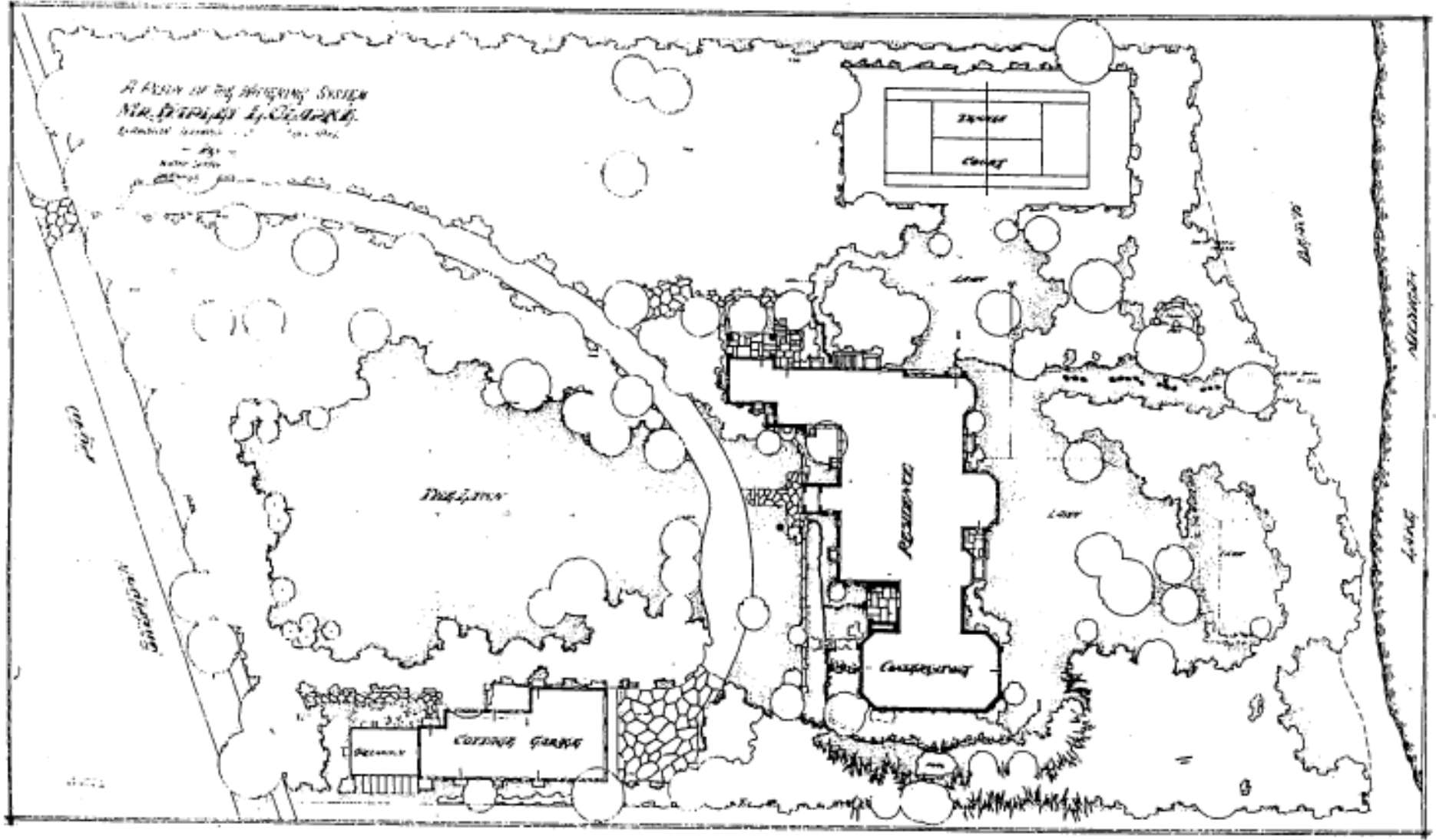


Figure A-2 JENSEN'S WATERING SYSTEM PLAN

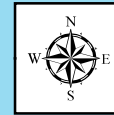
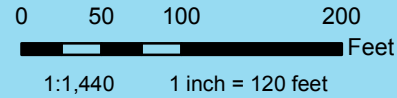
Jensen highlighted the conservatory area as flowering area, constructing a naturalistic outcropping of limestone and a naturally shaped pool. He left only a narrow access path, such as you'd find in the wild at the base of a ledge. It was a private space. It is also the only space where Jensen specifically located each of the 19 varieties of flowers in a precise manner, indicating the high value he placed on the feature.

His council ring, or campfire is placed in a shrubby mass overlooking the lake and the beach. His rings were usually inward-looking, contemplative spaces - this one appears a little different, though still in that vein. Here he has provided filtered images of the lake - visual and aural, but by placing the ring in a circuit of choke cherry has ensured that few outside distractions are noticed.

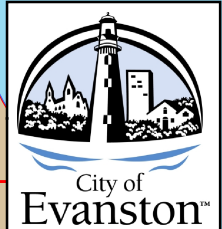
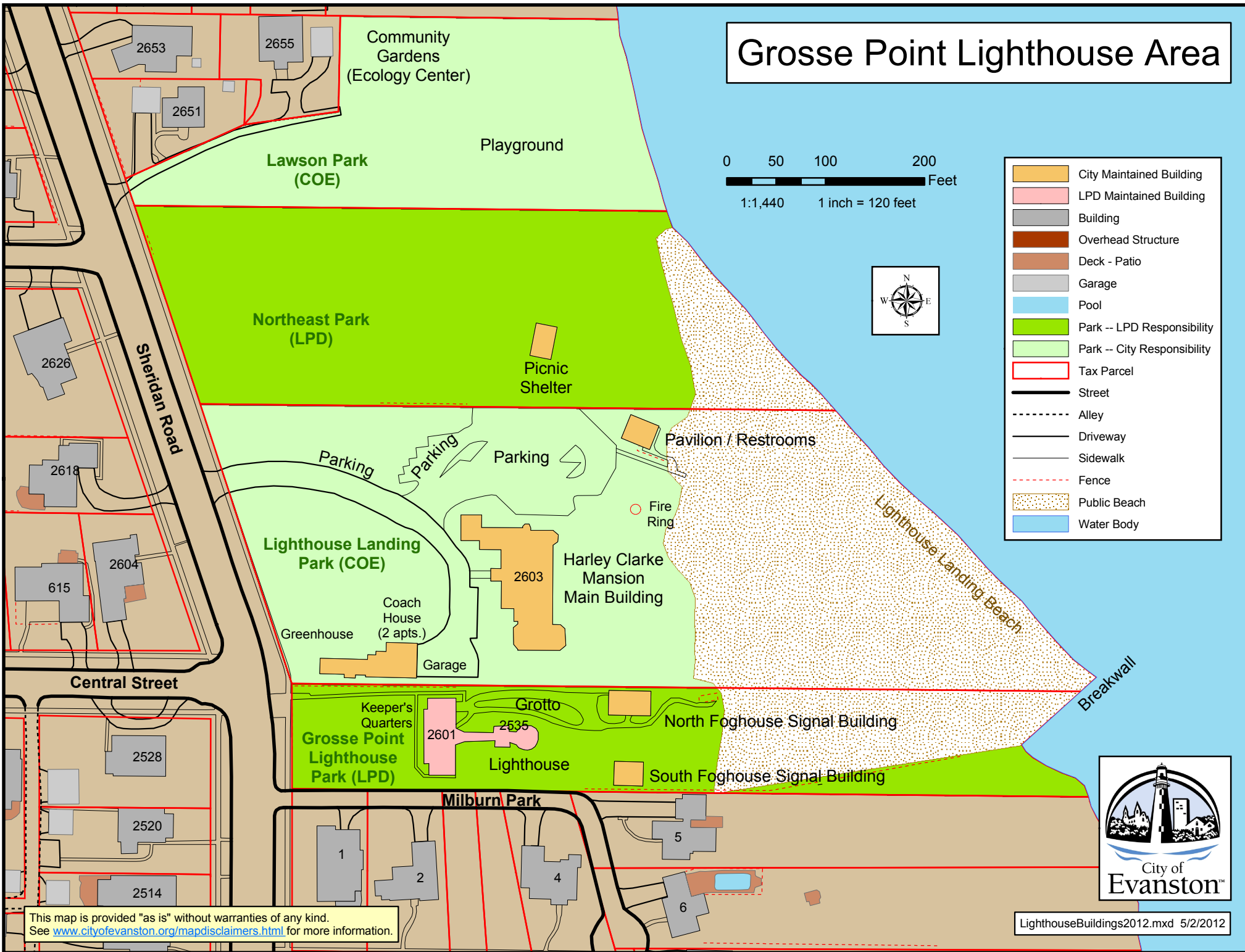
It should be noted that lawn and turf were used by Jensen as casual pathways and as meadow floor. He allowed the native varieties of ground cover to take over in many portions of the site, however. These areas required little or no maintenance. Note that he also specified a palette of perennials to serve as a border between the lawn and native areas.

# MAPS OF MANSION AND SURROUNDING PROPERTY

# Grosse Point Lighthouse Area



- City Maintained Building
- LPD Maintained Building
- Building
- Overhead Structure
- Deck - Patio
- Garage
- Pool
- Park -- LPD Responsibility
- Park -- City Responsibility
- Tax Parcel
- Street
- Alley
- Driveway
- Sidewalk
- Fence
- Public Beach
- Water Body



This map is provided "as is" without warranties of any kind. See [www.cityofevanston.org/mapdisclaimers.html](http://www.cityofevanston.org/mapdisclaimers.html) for more information.

# Grosse Pointe Lighthouse



LAWSON PARK /  
NOAH'S PLAYGROUND

CITY OF EVANSTON

LGHT HSE PK DIS EVAN

Clinton Place

Sheridan Road

Harley Clarke  
Mansion

CITY OF EVANSTON

Coach House

PROPERTY LEASED TO  
LIGHTHOUSE PARK DISTRICT

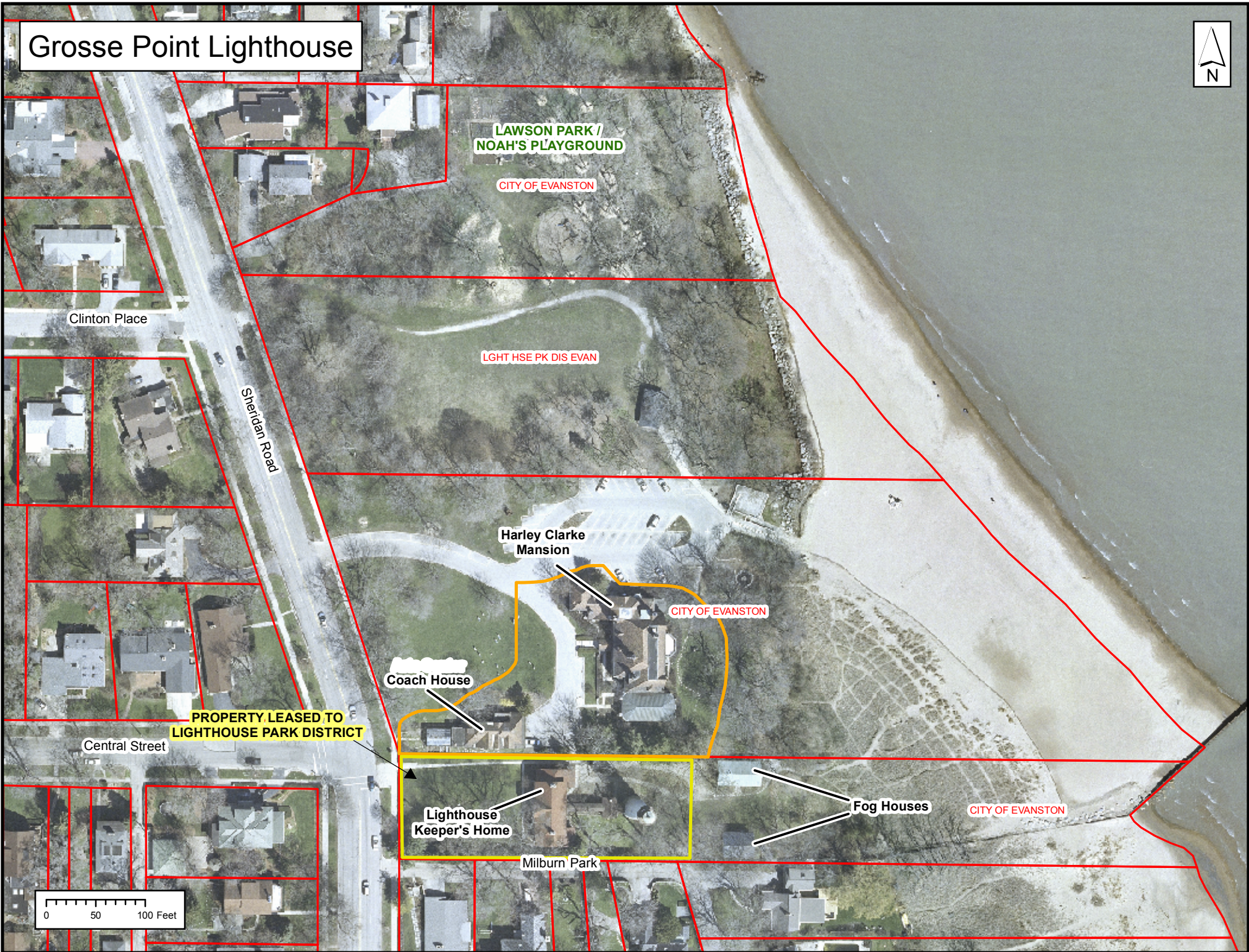
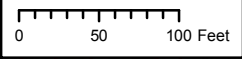
Central Street

Lighthouse  
Keeper's Home

Fog Houses

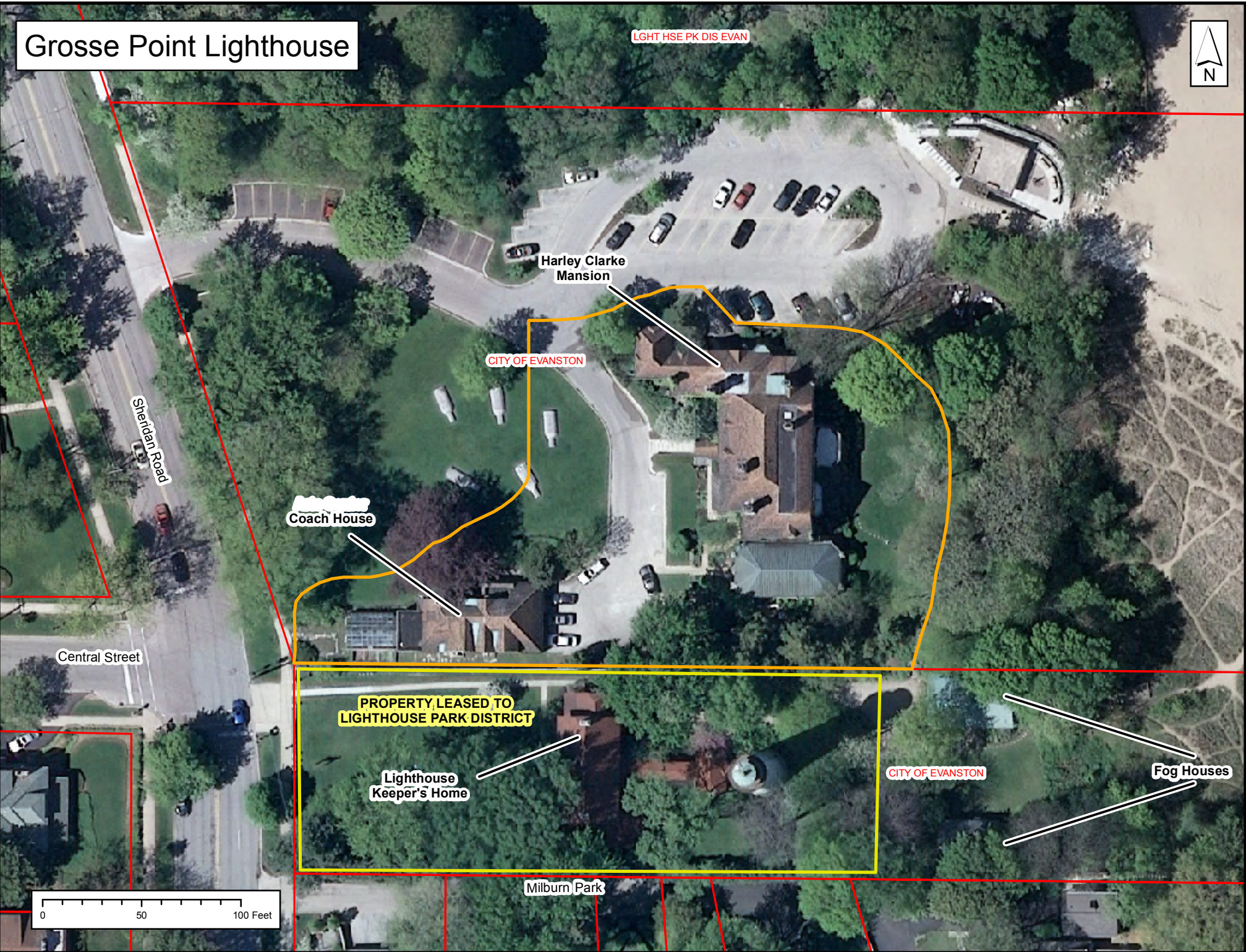
CITY OF EVANSTON

Milburn Park



# Grosse Pointe Lighthouse

LGHT HSE PK DIS EVAN



Harley Clarke Mansion

CITY OF EVANSTON

Sheridan Road

Coach House

Central Street

PROPERTY LEASED TO Lighthouse PARK DISTRICT

Lighthouse Keeper's Home

CITY OF EVANSTON

Fog Houses

Milburn Park

