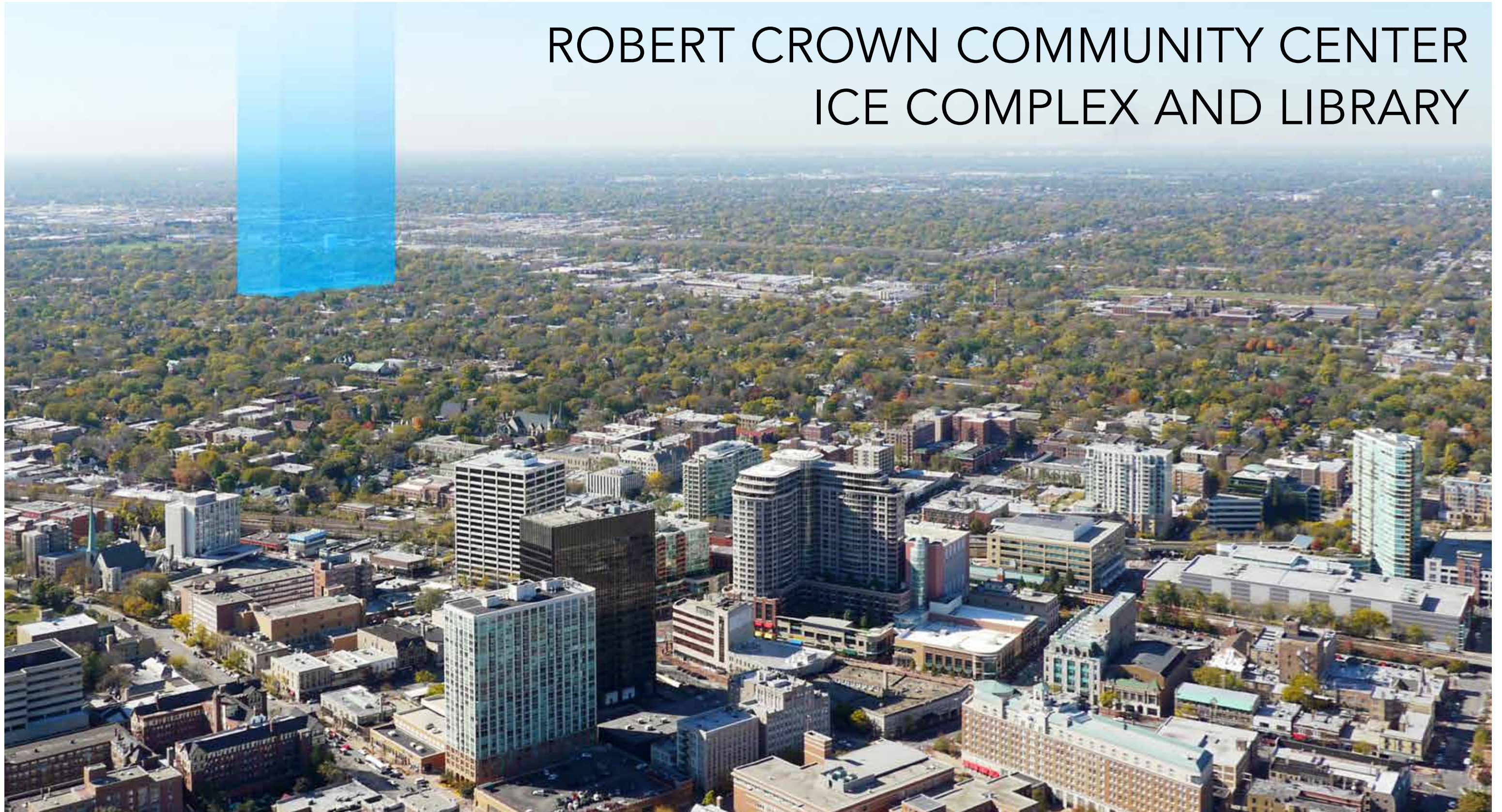


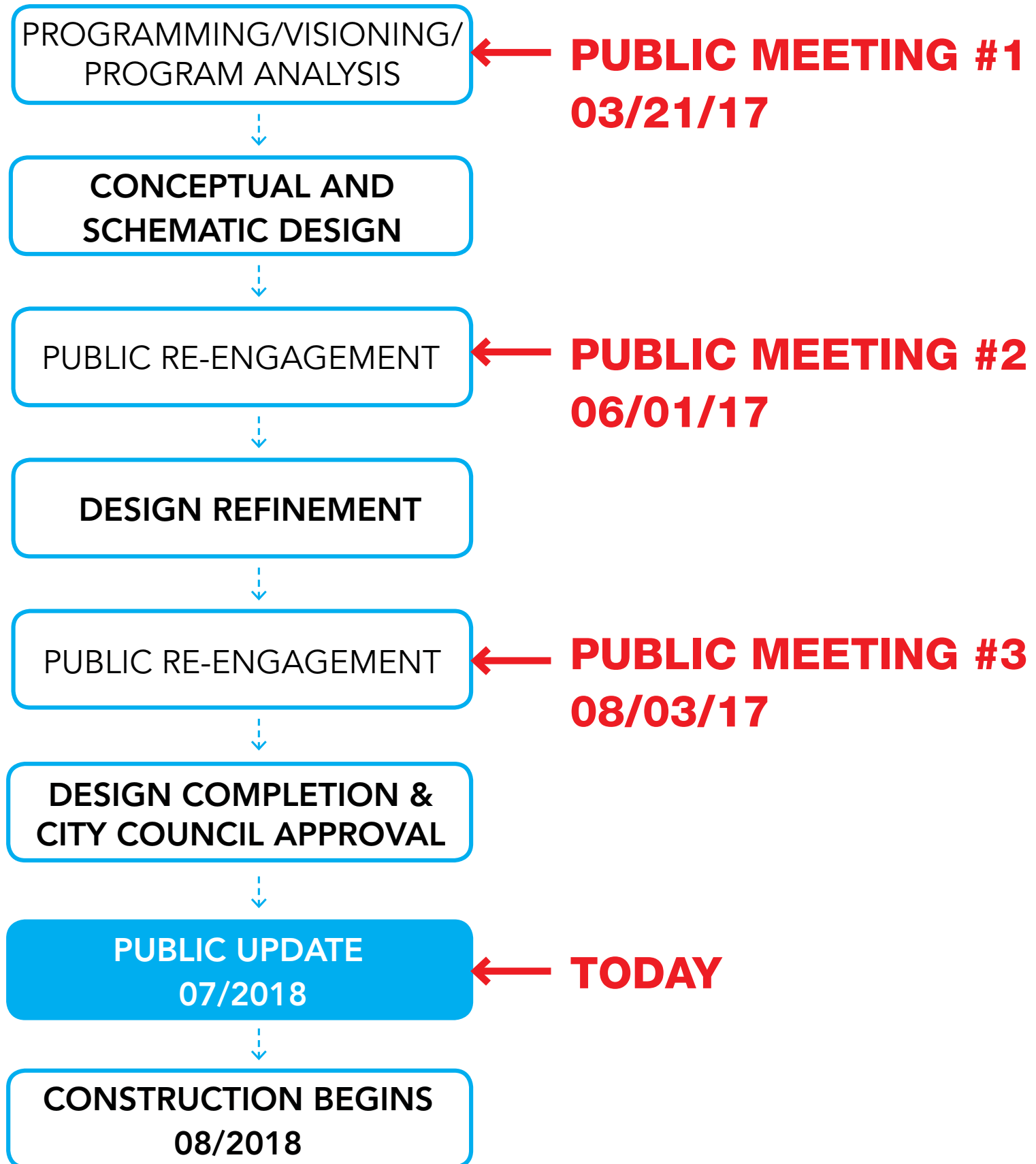
# ROBERT CROWN COMMUNITY CENTER ICE COMPLEX AND LIBRARY



PUBLIC MEETING 04  
07/11/2018



# PUBLIC PROCESS



# SITE AND LANDSCAPE PLAN



# LANDSCAPE



**PROVIDE BUILDING SCREENING**



**SITE TOPOGRAPHY**



**READING GARDEN**



**EXISTING ELM GROVE**

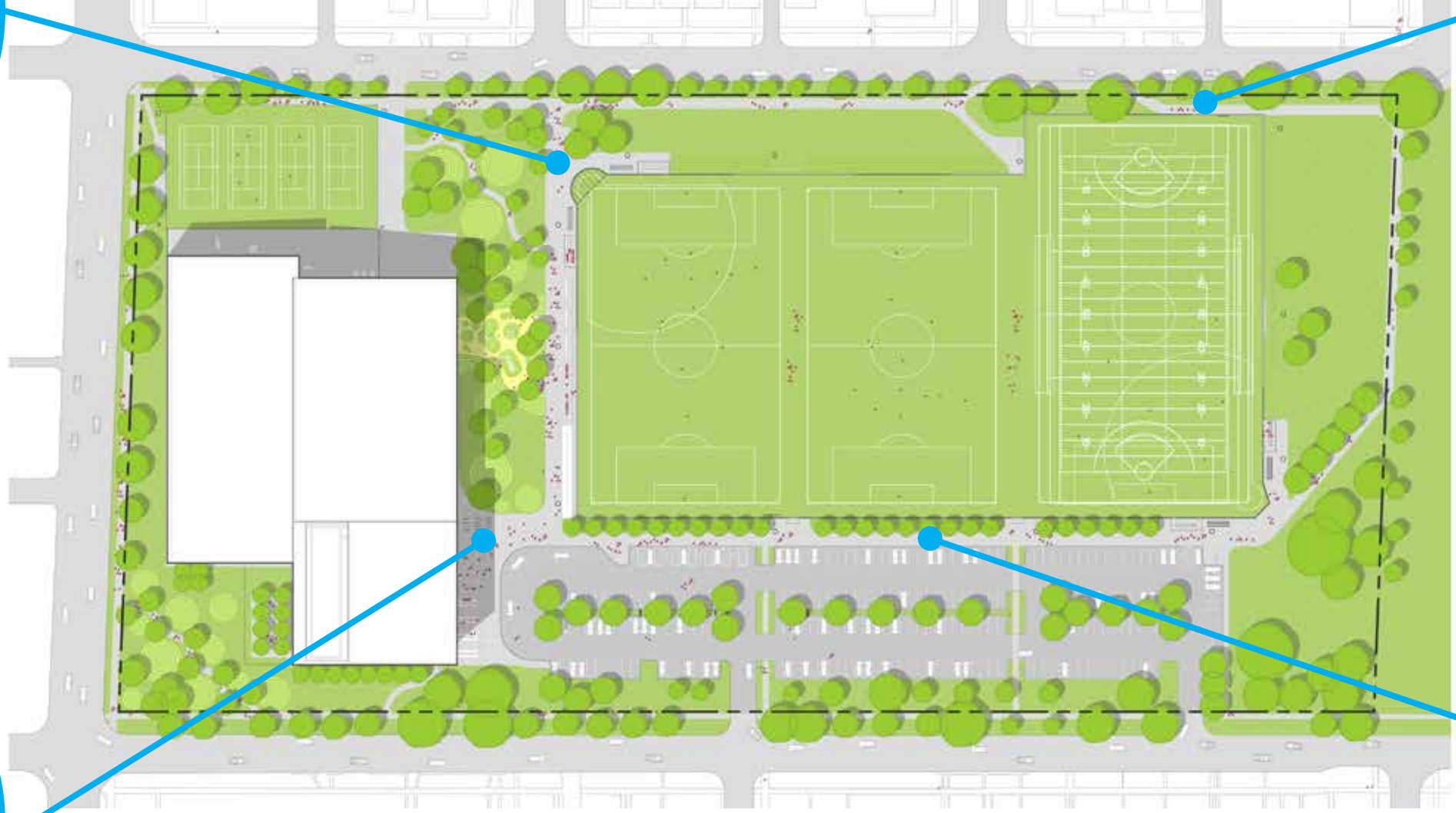
# SITE ACCESS



**FIELD ACCESS & ENCLOSURE**



**SITE PATHWAYS**



**BIKE PARKING**



**SITE CONNECTIONS**

# RECREATION



TENNIS COURTS



INFORMAL RECREATION



PLAYGROUND



LANDSCAPE SPECTATOR SPACE

# SPORTS FIELDS

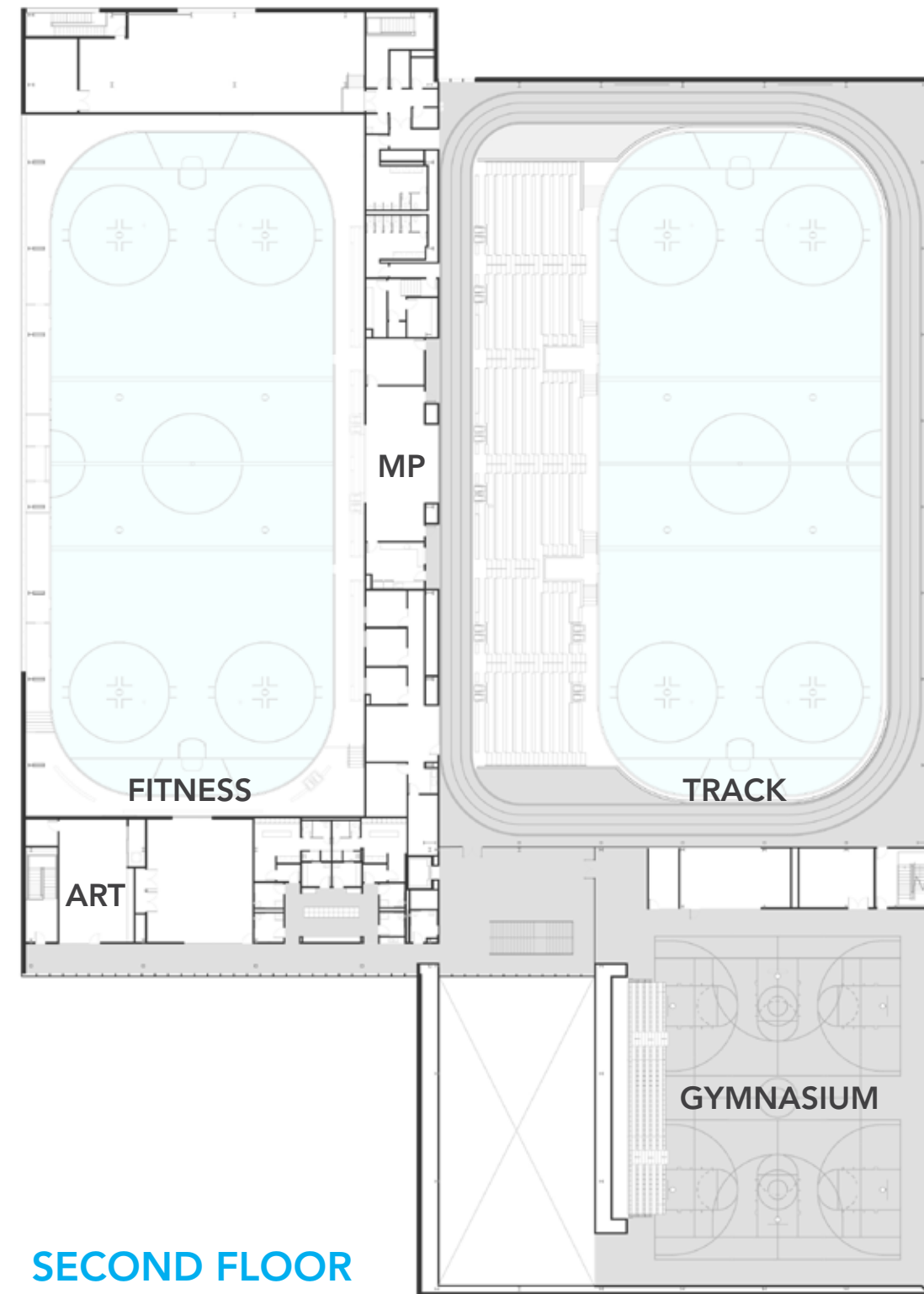
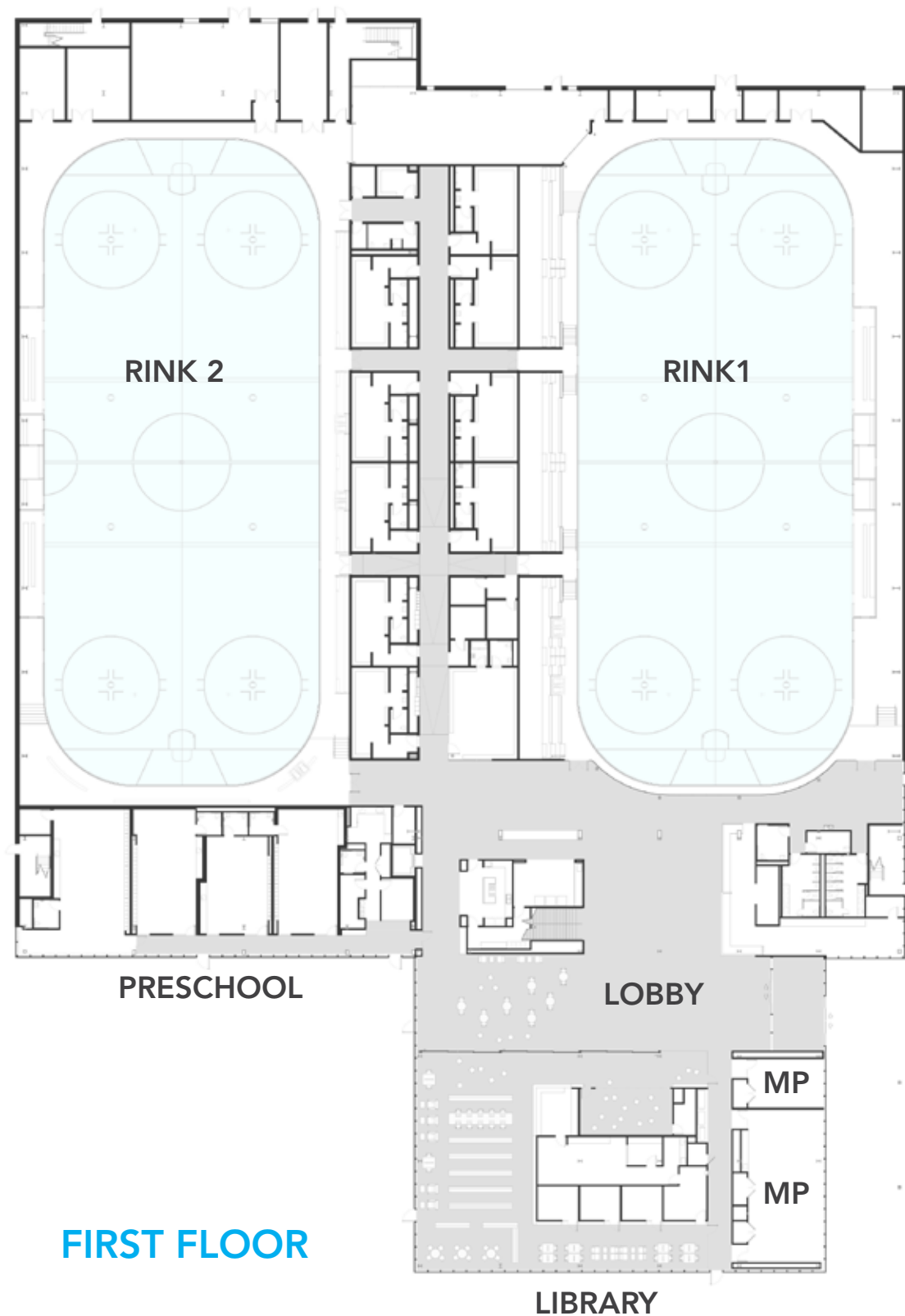


# SPORT FIELDS / FENCING / LIGHTING

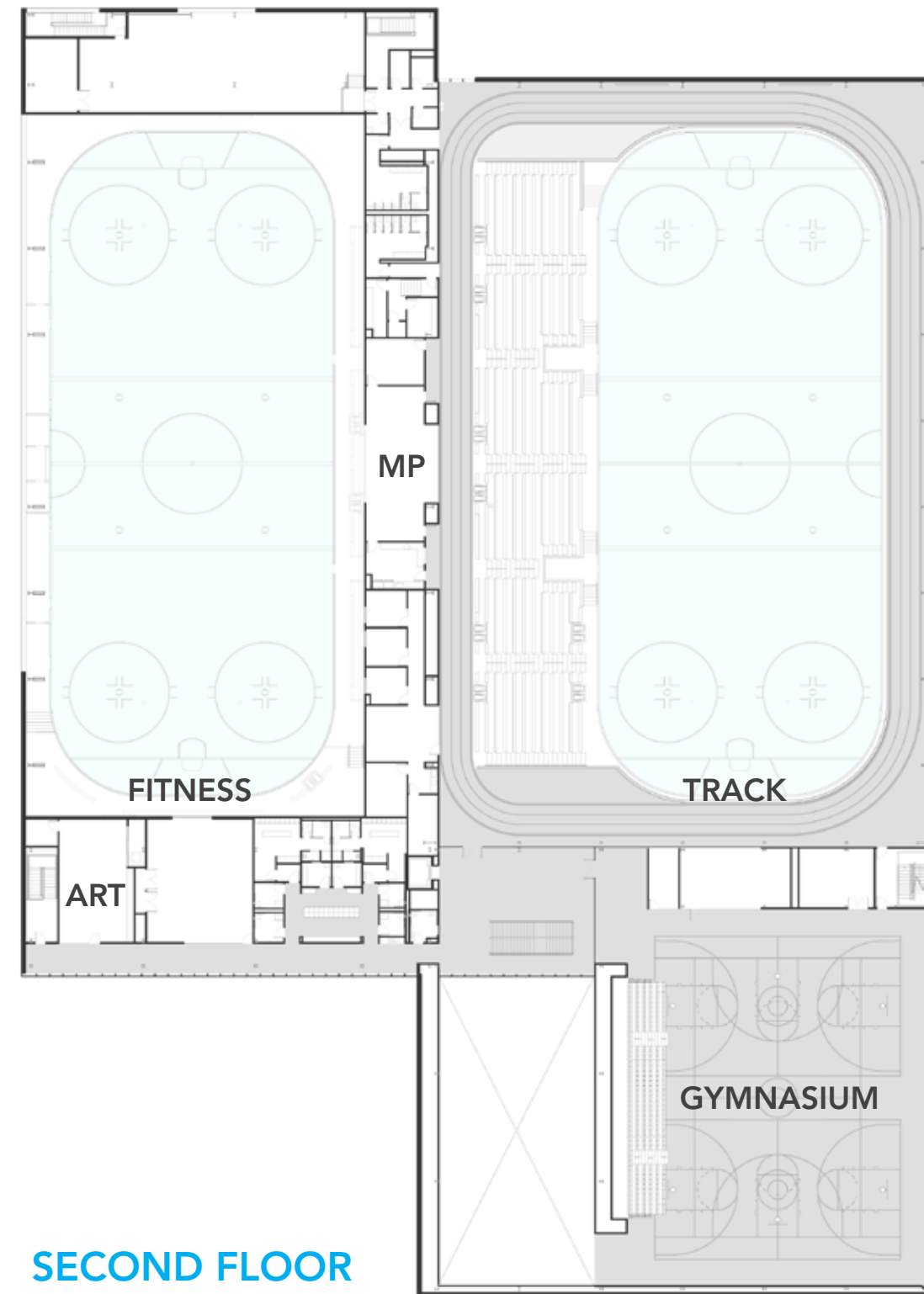
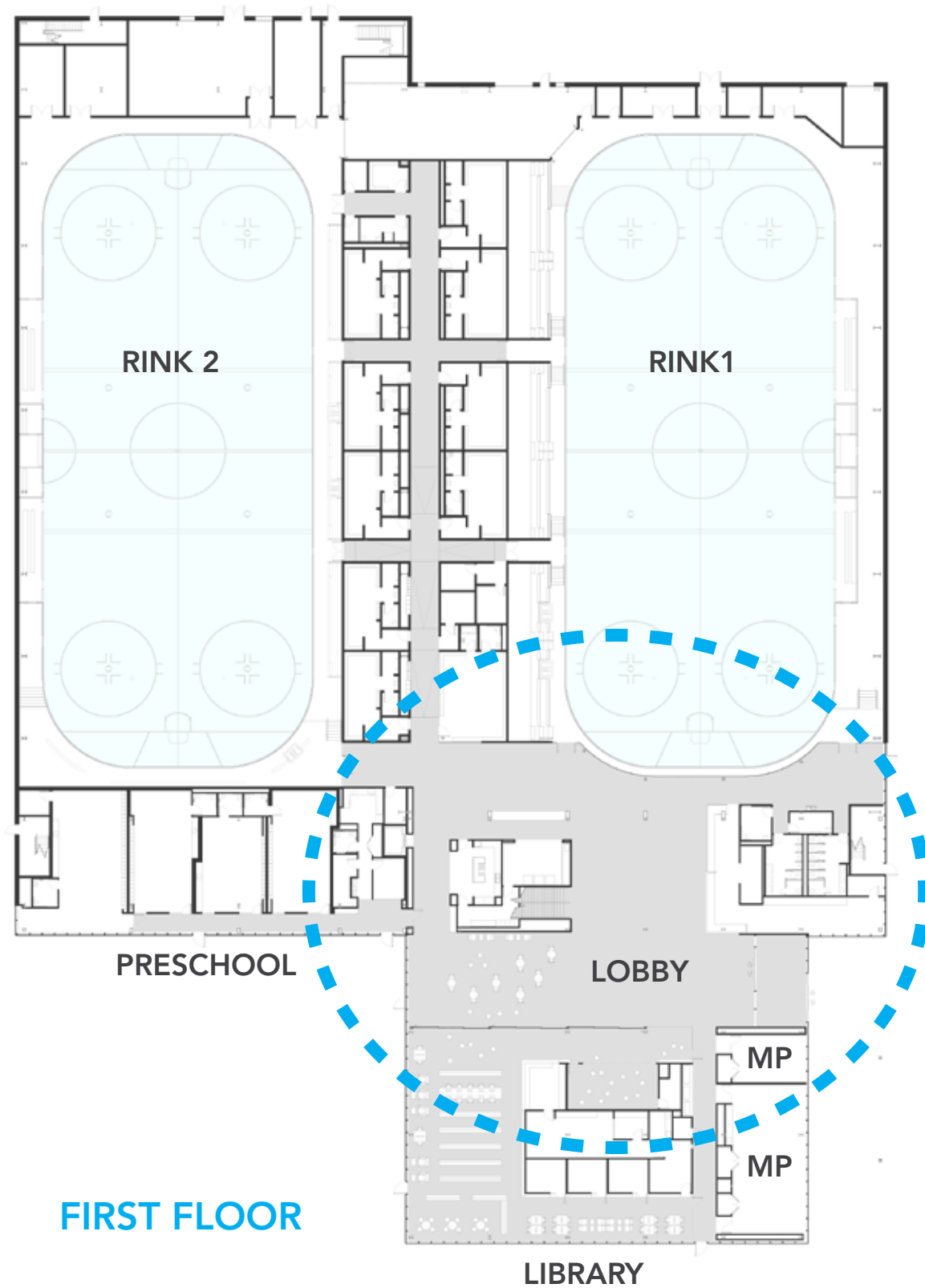




# FLOOR PLANS



# ENTRY/LOBBY

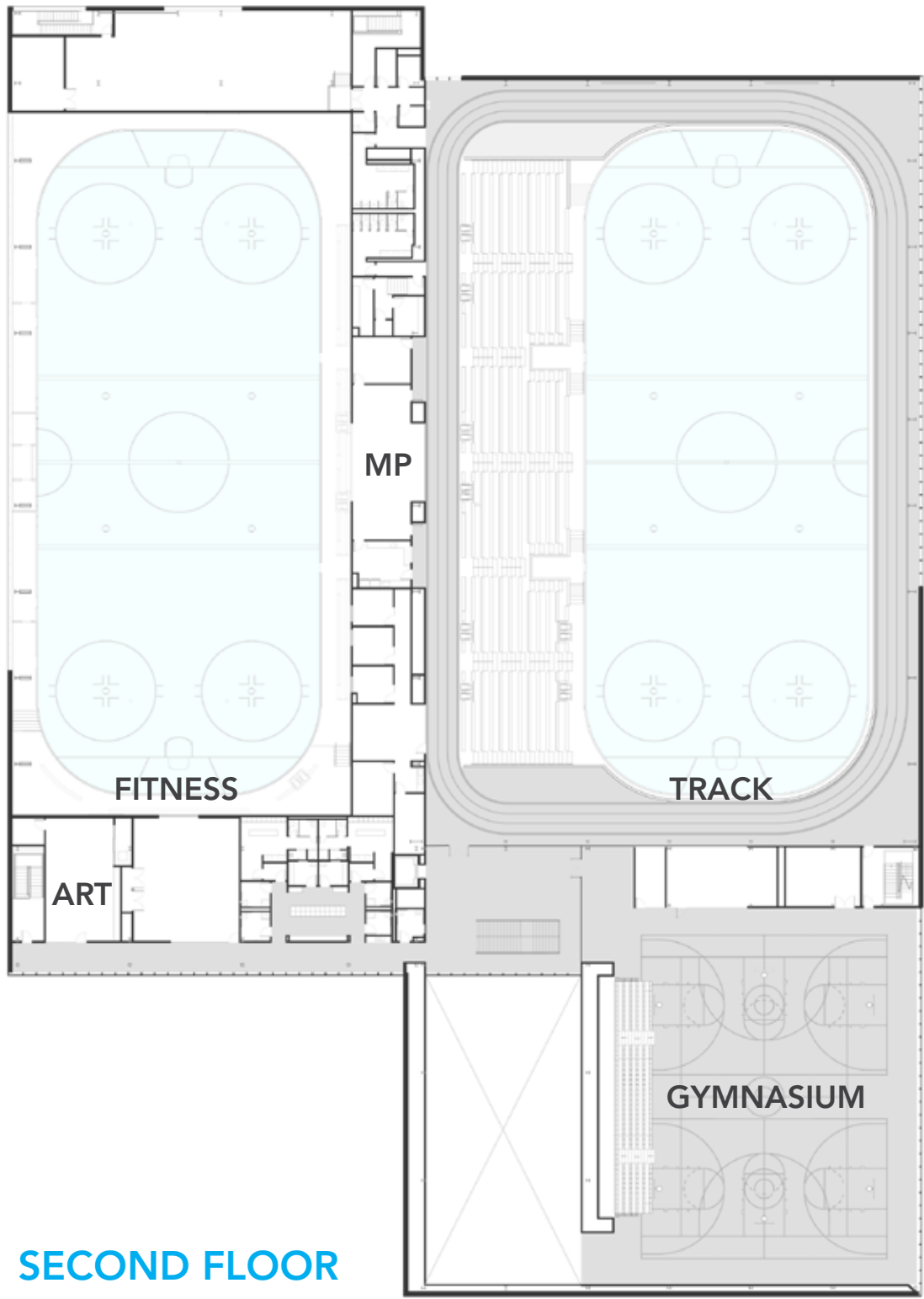
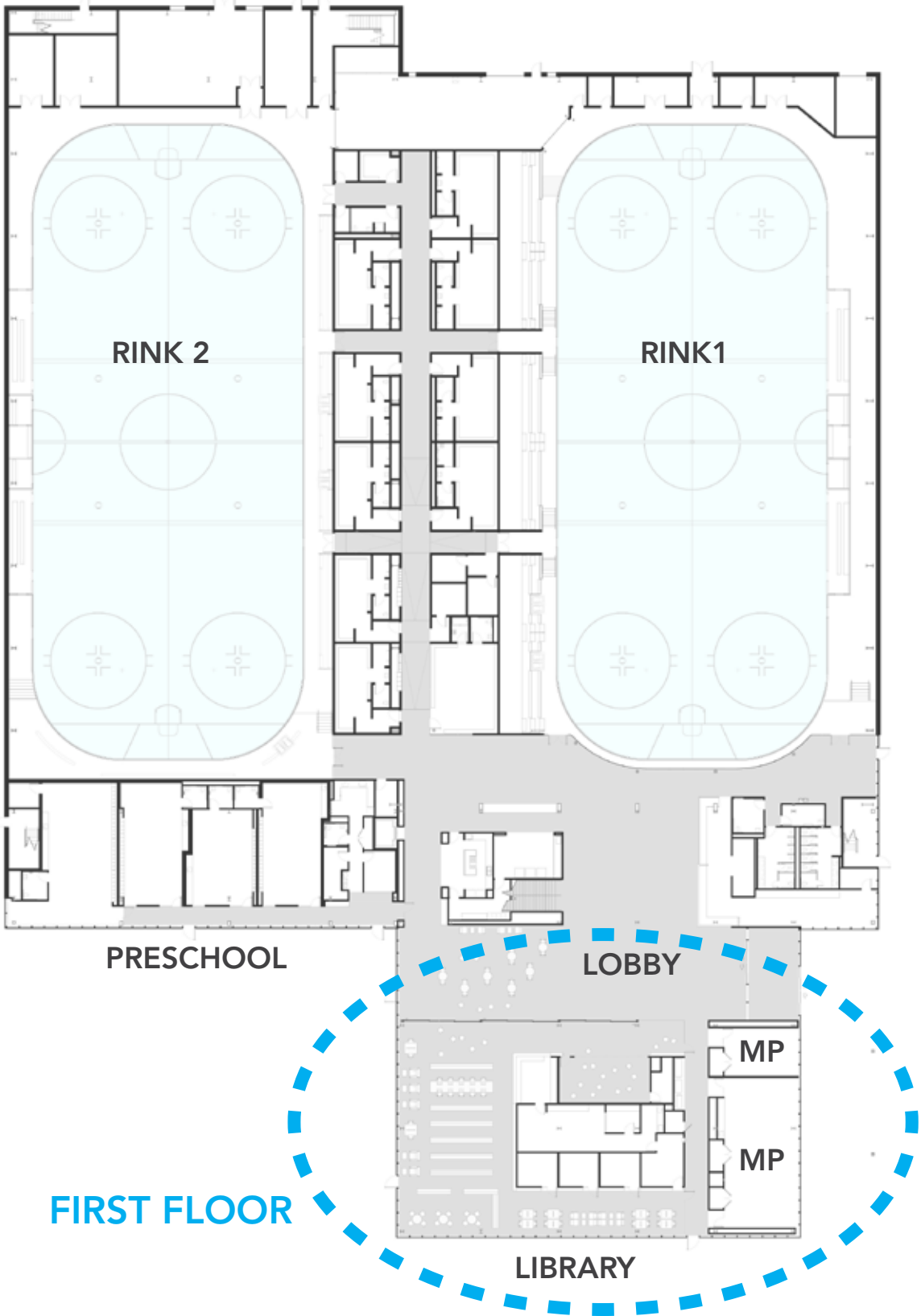


# ENTRY/LOBBY



LOBBY, AT ENTRY, LOOKING TO RINK #1

# LIBRARY

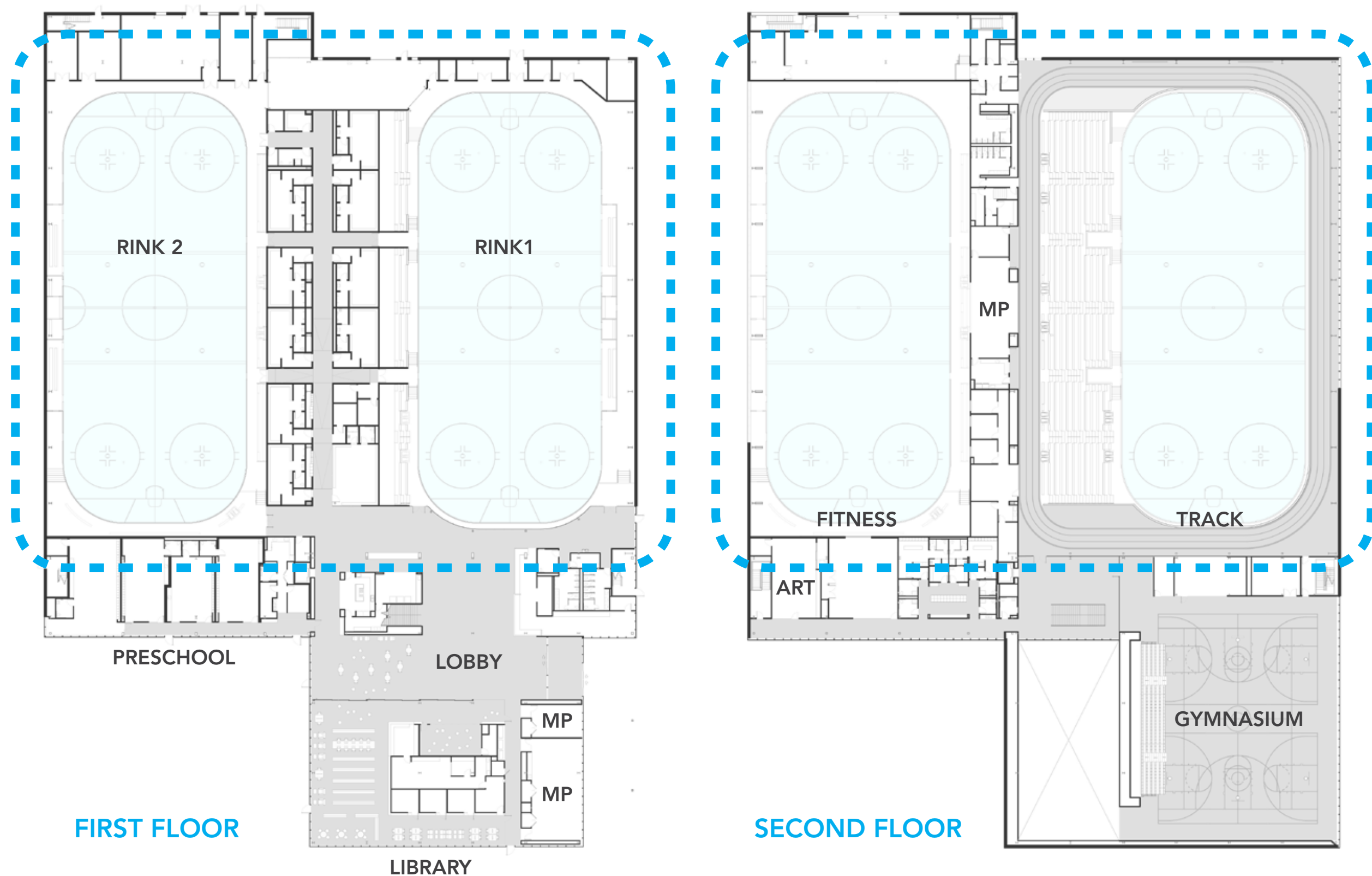


# LIBRARY



VIEW FROM LIBRARY LOOKING BACK TOWARD LOBBY

# ICE ARENAS

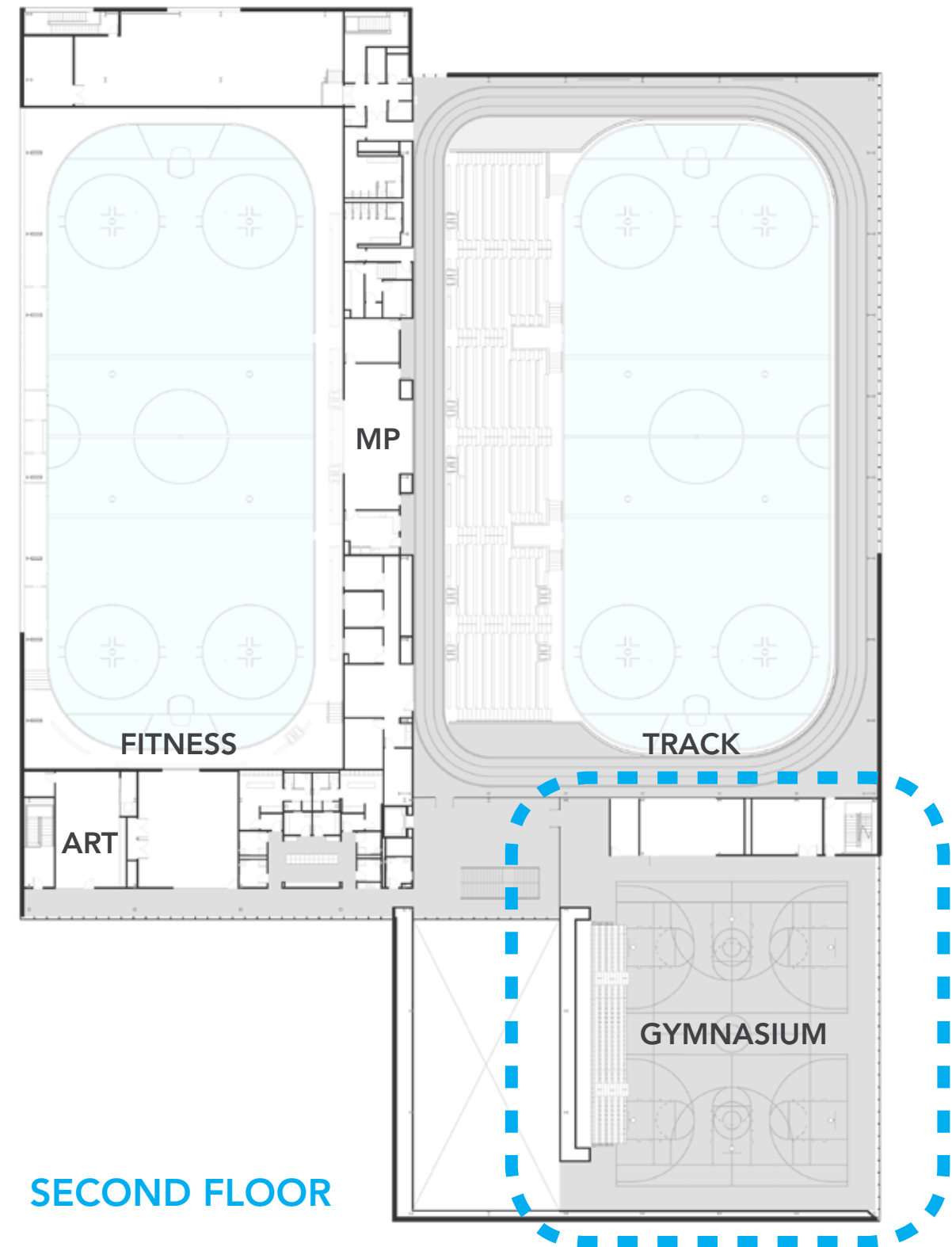
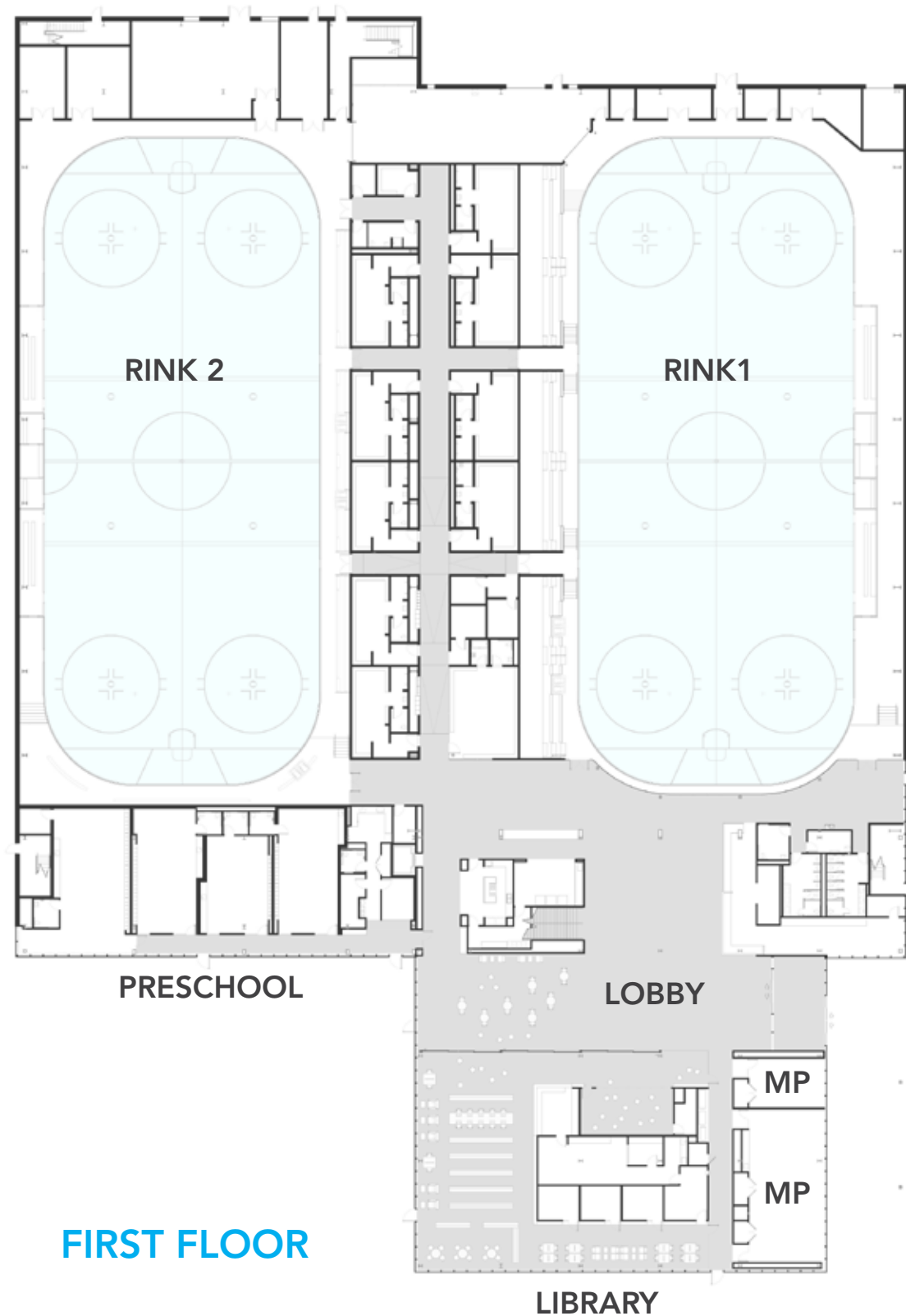


# ICE ARENAS



ICE ARENA INTERIOR

# GYMNASIUM





# GYMNASIUM



GYMNASIUM INTERIOR

# ENTRY VIEW



ENTRY VIEW FROM THE EAST

# CORNER VIEW



VIEW FROM CORNER OF MAIN/DODGE

# CORNER VIEW



VIEW FROM CORNER OF DODGE/LEE

# PROMENADE VIEW



VIEW FROM PROMENADE LOOKING SOUTH

# SUSTAINABILITY - LEED SILVER



# PUBLIC ART OPPORTUNITIES



# LOGISTICS PLAN: Phase 1

## August 2018 through November 2019



- Construction traffic route



- Construction gate access



- Construction area

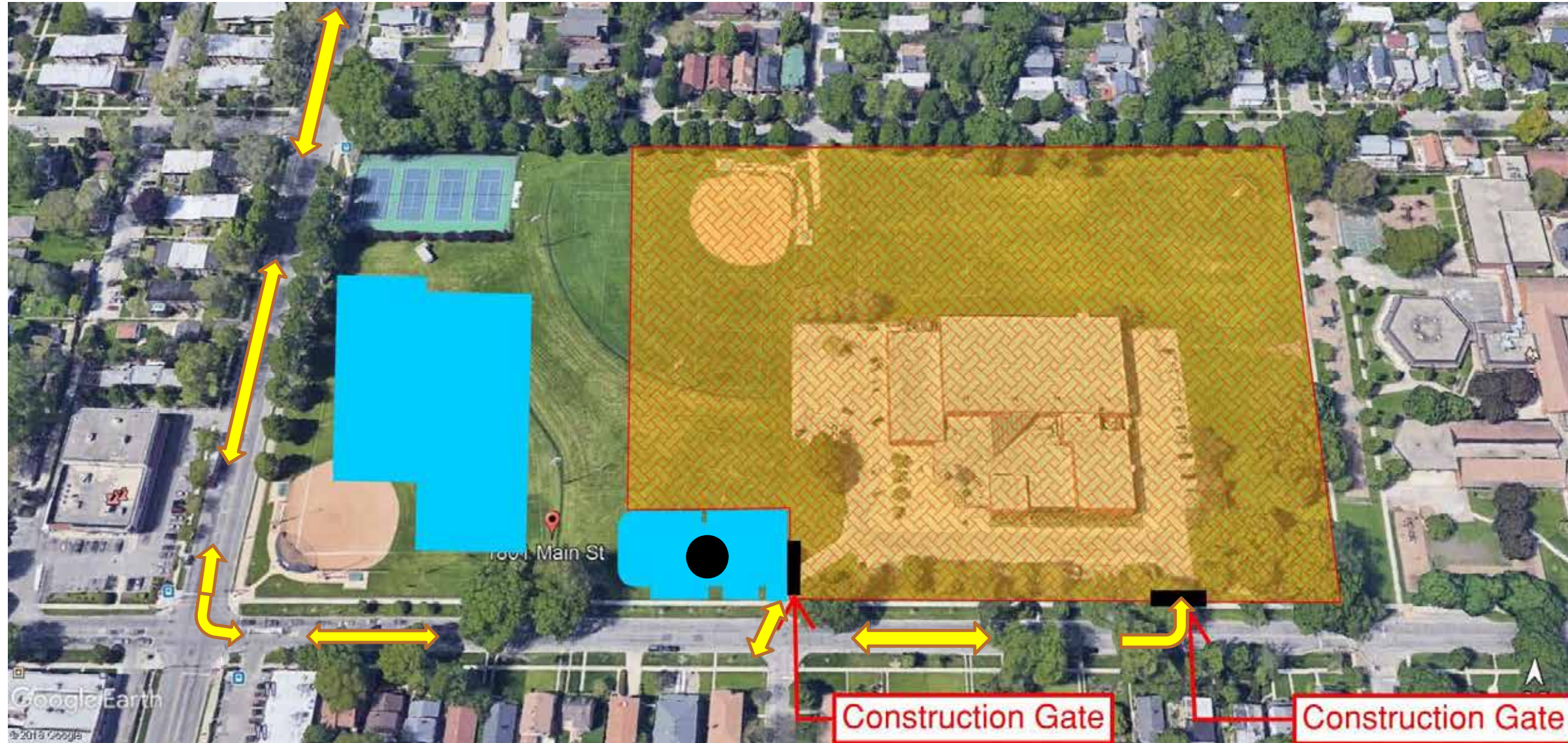


\*Dates estimated based on weather conditions



# LOGISTICS PLAN: Phase 2

## November 2019 through March 2020



- Construction traffic route  

- Construction gate access  

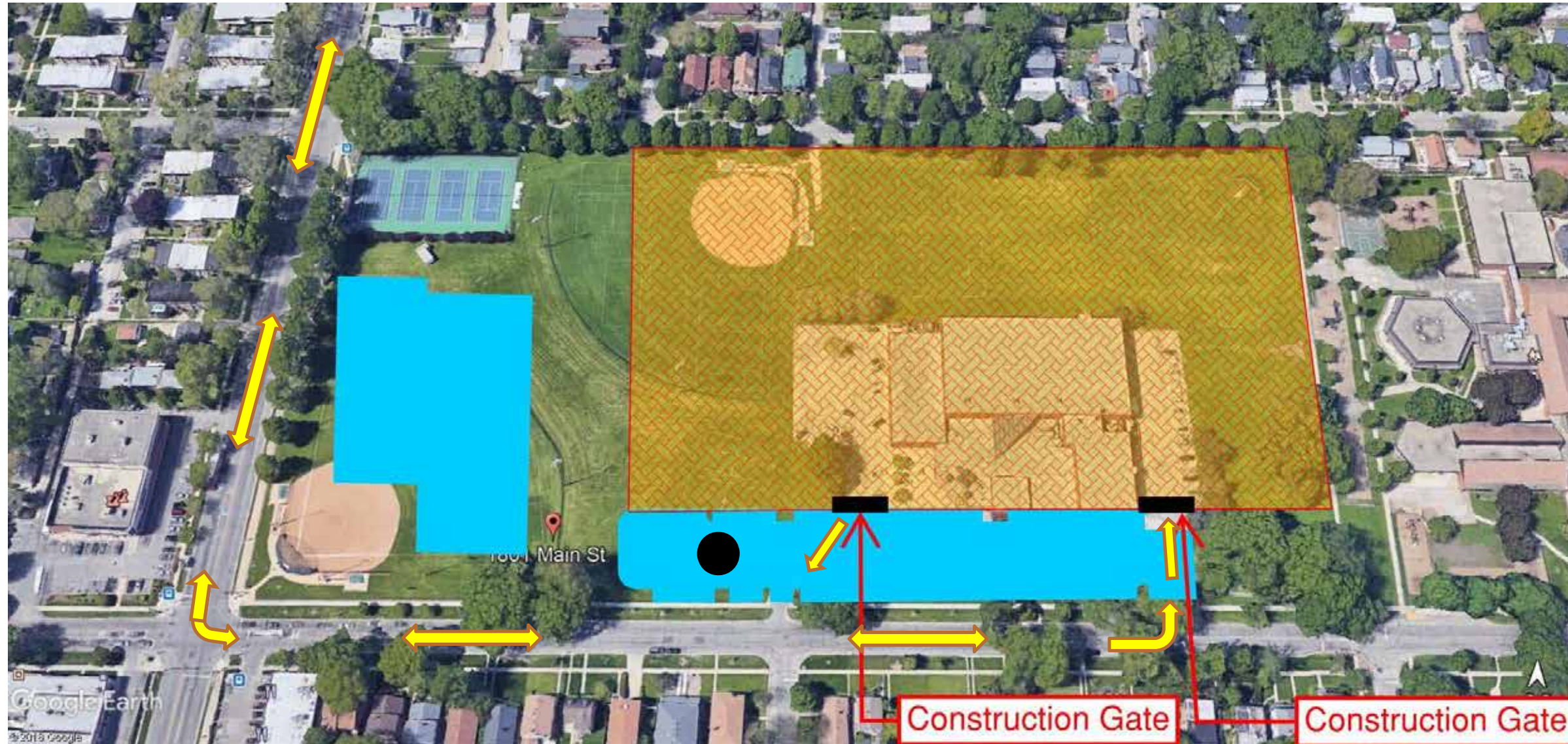
- Public parking  

- Construction area  


\*Dates estimated based on weather conditions

# LOGISTICS PLAN: Phase 3

## March 2020 through June 2020



- Construction traffic route  
↔
- Construction gate access  
█
- Public parking  
●
- Construction area  
▨

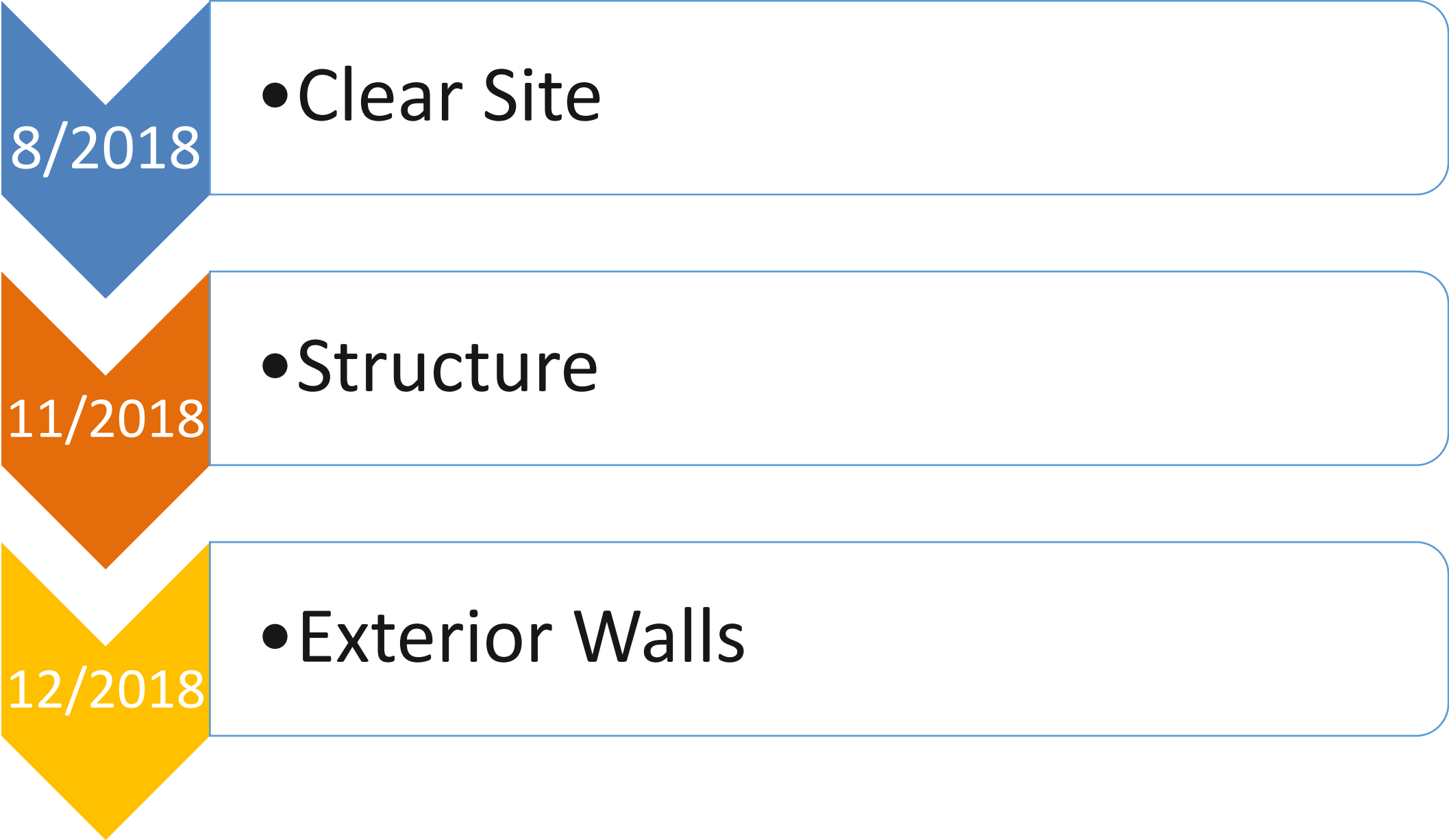
\*Dates estimated based on weather conditions

# LOGISTICS PLAN: Project Complete



# MAJOR CONSTRUCTION MILESTONES

## Phase 1



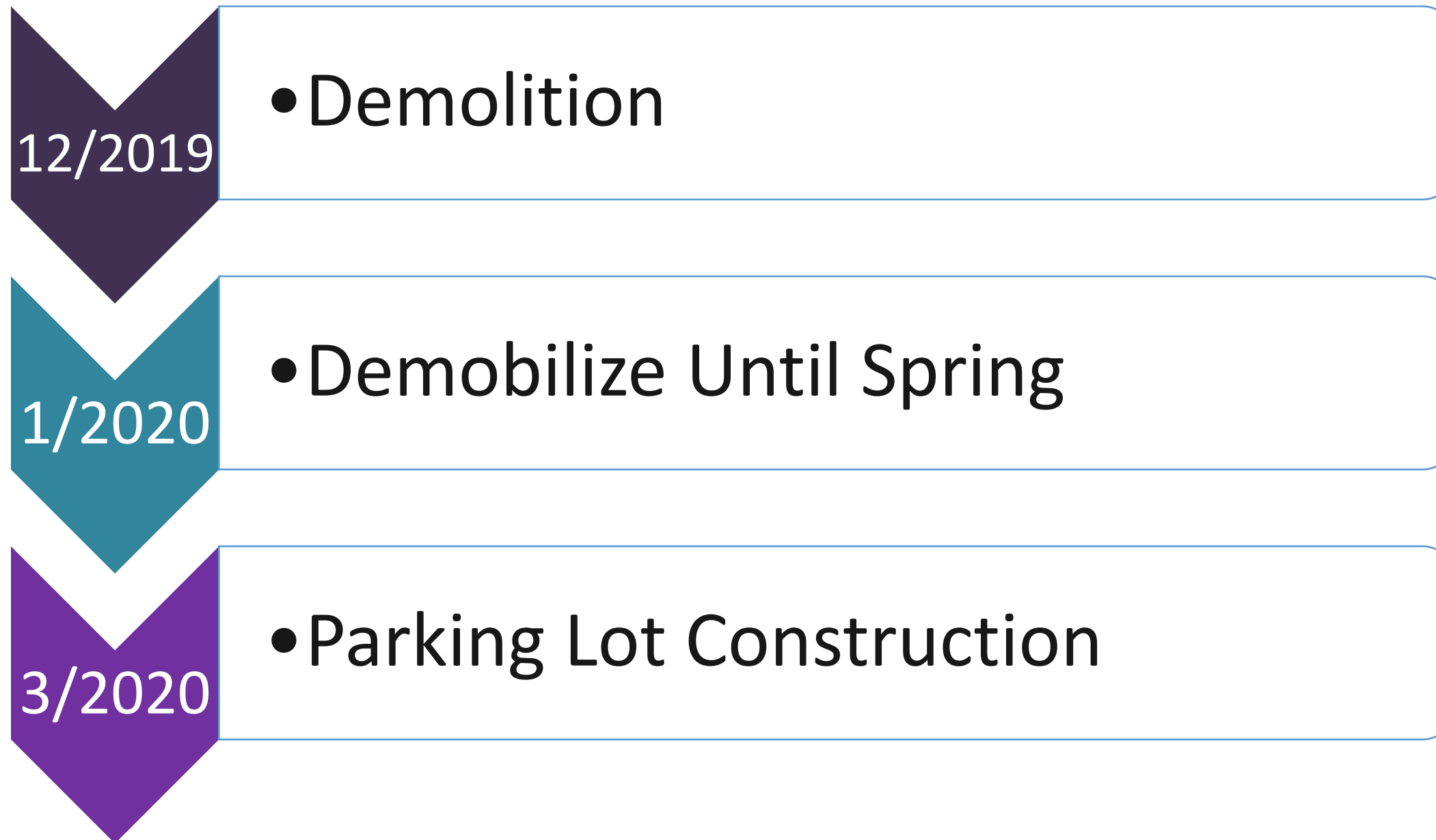
# MAJOR CONSTRUCTION MILESTONES

## Phase 1



# MAJOR CONSTRUCTION MILESTONES

## Phase 2



# MAJOR CONSTRUCTION MILESTONES

## Phase 3



# COMMUNITY ENGAGEMENT

In the spirit of open communication and helpful dialogue, please join us:


## Community MEETING

Robert Crown Community Center, Ice Complex & Library

Friday, September 21, 2018  
8:00 am

**Topics of Discussion:**

- Sequence of construction
- Milestone dates
- Parking
- Construction traffic
- Delivery routes
- Work hours
- B&A | BOWA contacts
- Questions & Answers



FREE & OPEN TO THE PUBLIC

**BULLEY & ANDREWS**  
Building Matters®

**BOWA**  
CONSTRUCTION

City of Evanston

For more information on the construction program for RCCC please visit:  
[www.cityofevanston.org](http://www.cityofevanston.org)

## AGENDA

### Robert Crown Community Center, Ice Complex & Library Community Coffee Meeting



- Sequence of Construction
- Milestone Dates
- Parking
- Construction Traffic/Truck Routes
- Work Hours



Notes

---

---

---

---

---

---

---

---

---

---

[www.bulley.com](http://www.bulley.com)



# COMMUNITY ENGAGEMENT

## Robert Crown Community Center Economic Benefit Program

*A Diverse Workforce Is A Strong Workforce*

### **City of Evanston Economic Benefit Program:**

---

*Minimum Requirements:*

#### **Local Employment Program (LEP)**

1. 15%+ of all hours worked onsite to be performed by local Evanston residents
2. Hire 1+ local resident

#### **Company Participation**

1. 25% of project direct work will be awarded and performed by M/W/EBE business enterprises
2. 3% of project direct work will be awarded and performed by EBE business enterprises

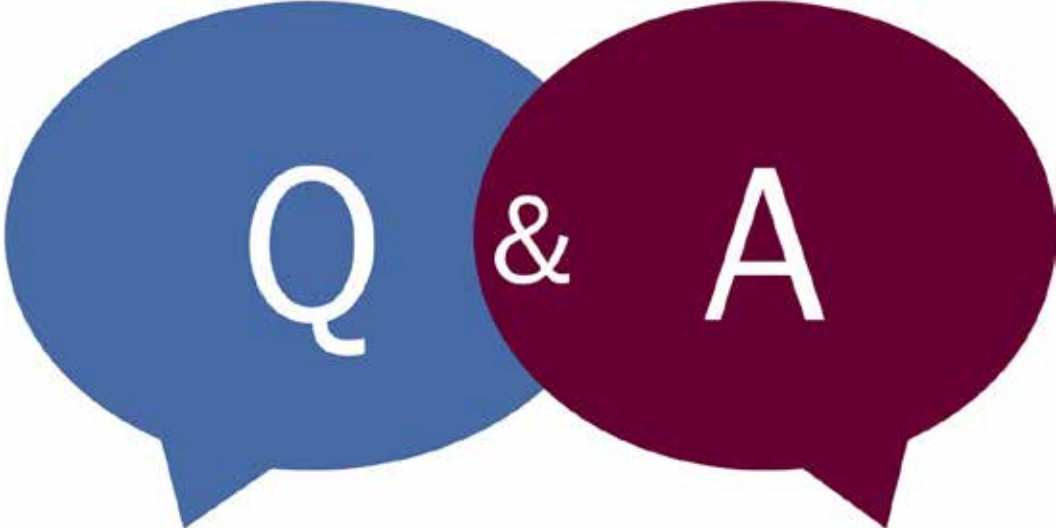


# COMMUNITY ENGAGEMENT



# COMMUNITY ENGAGEMENT





ROBERT CROWN  
COMMUNITY CENTER  
ICE COMPLEX AND LIBRARY

