

Illustrations for  
“Preliminary Survey of Historic Art in the Evanston Schools”

by

Margherita Andreotti, Ph.D.

with contributions by Christine Bell, Ph.D., and Nancy Flannery

(All photos by Nancy Flannery, unless otherwise specified)

© 2007



Fig. Oak.1 - Wall  
installation of 16th C.  
Persian tiles, approx. 10  
x 6 ft.



Fig. Oak. 2 - Alfred Lenzi, *Domestic Animals of America*, 1937/39 (WPA), pine, approx. 2.5 x 12 ft..



Fig. Oak. 3 - Alfred Lenzi, *Wild Animals of America*, 1937/39 (WPA), pine, approx. 2 x 10 ft.



Fig. Oak. 4 - Alfred Lenzi, *Wild Animals of America* (detail), 1937/39 (WPA), pine.



Fig. Oak. 5 -  
Mural (left half), 1930s?  
Currently covered by  
temporary wall in  
kindergarten classroom  
(photo provided by  
teacher).



Fig. Oak. 6 -  
Louise Pain,  
*Sundial*, carved stone  
(damaged), 1936  
(WPA), approx. 48 x 18  
x 18 in.



Fig. Oak. 7 - H. H. Betts, *Pueblo de Taos*, oil on canvas, approx. 32 x 38 in.





Fig. Oak. 8 - Animal tiles, 2 of dozens of tiles, kindergarten hallway.



Fig. Oak. 9 - *Country Scene with Cows*, tile wall panel, approx. 2 x 5 ft.



Fig. Oak. 10 - *Cat and Mouse*, damaged tile, kindergarten classroom.



Fig. Oak. 11 - *Song of Roland*, restored mural.



Fig. H. 1 - Mary Andersen Clark, *Girl and Boy*, 2 of 4 sculptures, 1938 (WPA), Bedford limestone, approx. 6 ft. tall.



Fig. H. 2 - Louise Pain, *Girl with Doll*, 1 of 9 reliefs, 1930s (WPA), oak, approx. 20 in. diameter.



Fig. H. 3 - *Horsemen from Parthenon Frieze*, plaster cast (damaged; 1 of 6 casts in first-floor hallway).



Fig. H. 4 - Carl Scheffler, Mural in Music Room, 1936, oil on canvas, approx. 6.5 x 30 ft.





Fig. H. 5 - Carl Scheffler, Mural in Music Room (detail of citizen group), 1936.



Fig. H. 6 - Rainey Bennett, Mural in Drama Room (detail of landscape), 1930s, oil on canvas, approx. 6.5 x 30 ft.



Fig. H. 7 - Rainey Bennett , Mural in Drama Room (detail of landscape, showing damage), 1930s.



Fig. N. 1 - J. Camoreyt, *The Grand Canal with Santa Maria della Salute*, 1929, oil on canvas, approx. 12 x 14 ft., Nichols School Library.



Fig. N. 2 - J. Camoreyt, *The Grand Canal with Santa Maria della Salute* (detail), 1929.



Fig. N. 3 - Vintage Photo of Nichols School Library, c. 1929.



Fig. N. 4 - *Town Meeting*, probably 1930s, mural on canvas, approx. 7 x 20 ft.



Fig. N. 5 - Tile bench, assembled from rare tiles collected by Frederick Nichols (one of about a dozen such benches donated to Evanston schools).





Fig. N. 6 - Top of tile bench shown in previous image.



Fig. N. 7 - Teodoro Wolf Ferrari, *Canal St. Barnabas in Venice*, oil on canvas, approx. 31 x 39 in.



Fig. N. 8 - Stairwell in Nichols School, showing window with stained glass.



Fig. N. 9 - Detail of stained-glass window.



Fig. N. 10 - Delft tile (one of dozens lining the walls of the lunch room of Nichols School)



Fig. N. 11 - First tile in a series of about 50 tiles illustrating the story of Don Quixote, lining the stairwells of Nichols School.



Fig. N. 12 - Some of the 50 tiles illustrating the story of Don Quixote, lining the stairwells of Nichols School.



Fig. N. 13 - Wall installation of rare tiles.





Fig. N. 14 - Wall installation of rare tiles above one of the water fountains.



Fig. L. 1 - Wood sculpture of worker (possibly *Industrial Trophy* by Sidney Loeb), 1930s (WPA).

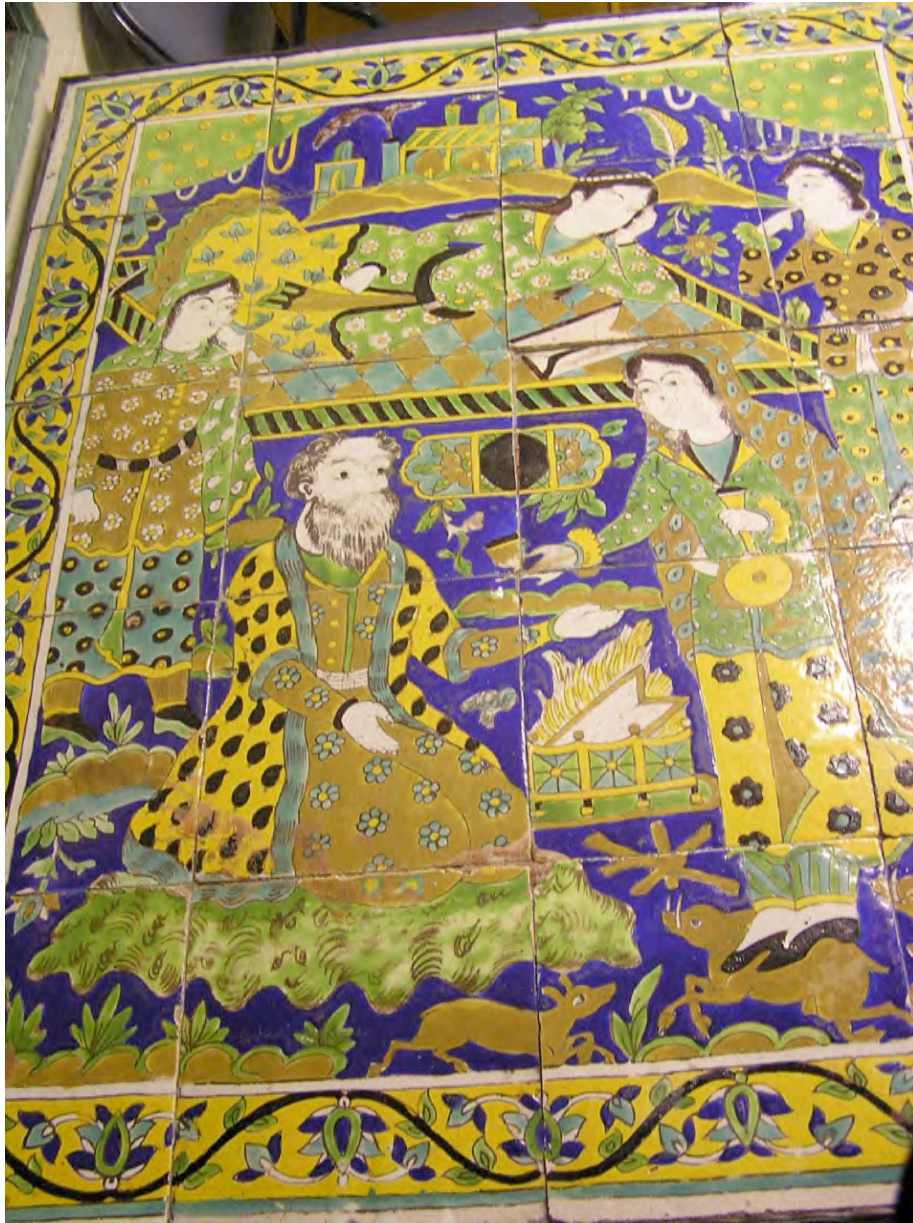


Fig. L. 2 - Detail of tabletop installation of Persian tiles.



Fig. L. 3 - Box containing the pieces of a bench created by Frederick Nichols from rare tiles.



Fig. L. 4 - Damaged corner of table with tabletop installation of Persian tiles.



Fig. L. 5 - Tabletop installation of Persian tiles, from table with damaged corner shown in previous image.

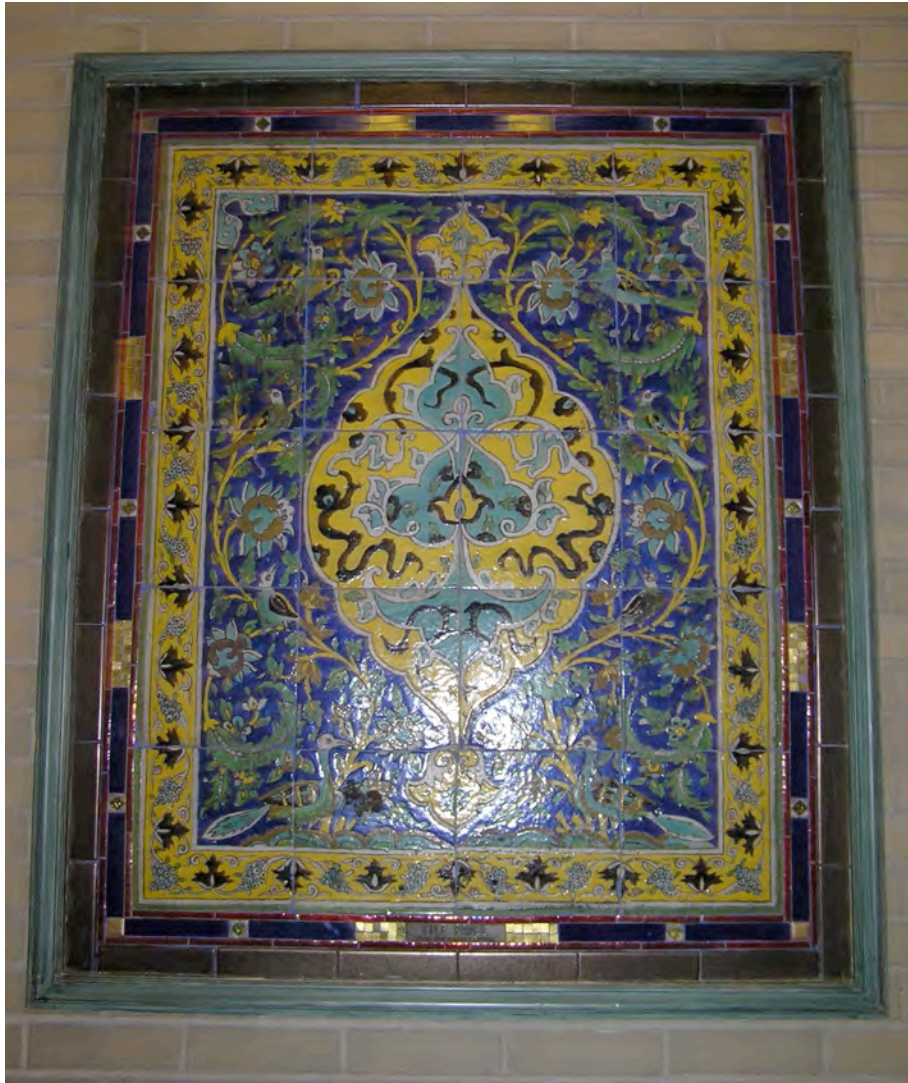


Fig. L. 6 - Wall installation of tiles from Persian palace.



Fig. L. 7 - Wall installation of rare tiles.





Fig. L. 8 - Andrene Kauffman, *Children in Fruit Tree*, 1930s (WPA), pine, approx. 4 x 6 ft.



Fig. L. 9 - Andrene Kauffman, *See No Evil Speak No Evil Hear No Evil* (detail), 1930s (WPA), pine, approx. 4 x 6 ft.



Fig. L. 10 - Louise Pain, *Organ Grinder*, 1930s (WPA), pine, approx. 3 x 8 ft.



Fig. L. 11 - Statue of Lincoln (detail), painted plaster.



Fig. L. 12 - Stained-glass window fragments from 1896 Lincoln school building by John T. Wilson Jennings (demolished 1968).



Fig. ETHS 1 - Wall installation of rare tiles depicting the god Mercury (one of two tile panels, the other of the goddess Diana, flanking the Welcome Hall), approx. 4 x 3 ft.



Fig. ETHS 2 - Current view of Welcome Hall in original ETHS building designed by Dwight Perkins, 1924.



Fig. ETHS 3 - Vintage photo of north side of Welcome Hall, as it looked originally.





Fig. ETHS 4 - Vintage photo of north wall of Welcome Hall, showing elaborate window design, now lost.



Fig. ETHS 5 - One of two stone fireplaces in the Welcome Hall.